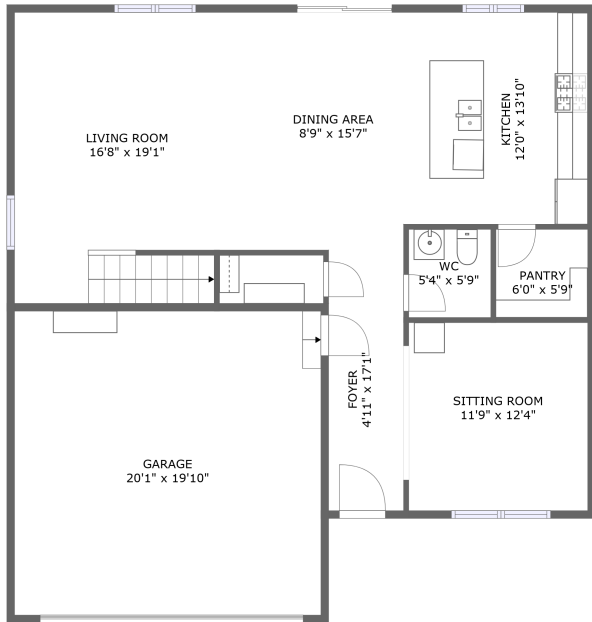
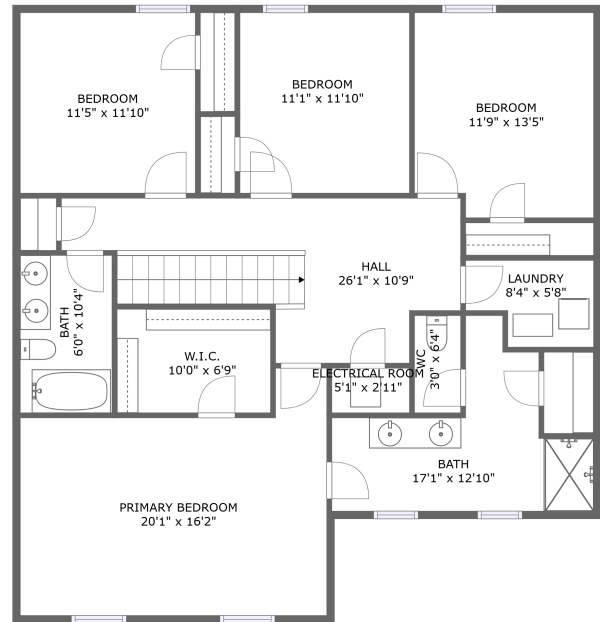


6901 Sanguine Ter, Ampthill, VA, US




FLOOR 1



FLOOR 2

Property summary


 **1** Garages

 **4** Bedrooms

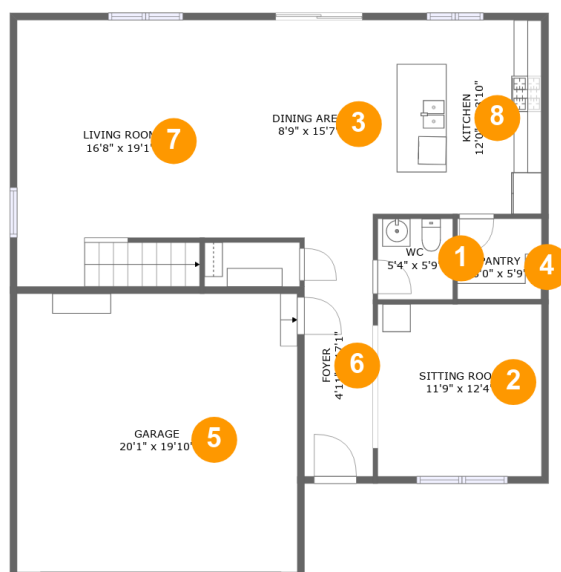
 **2** Bathrooms

 **1** Half baths

 **2** Floors

 **2,438** Gross living area sqft

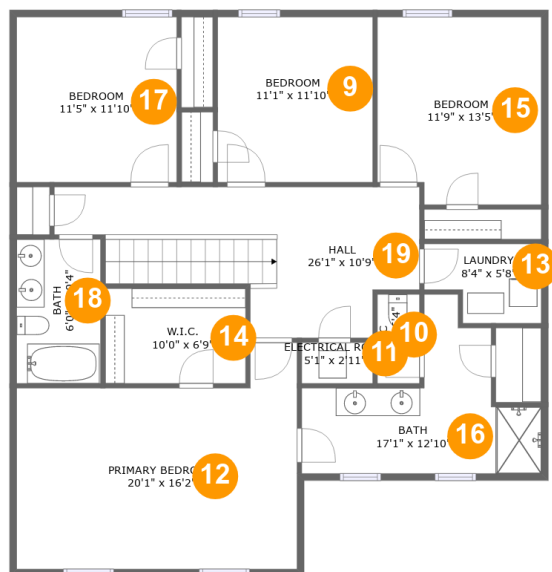
 **2,875** Total sqft

6901 Sanguine Ter, Ampthill, VA, US**Room dimensions**

Floor 1

Total sqft: 1437 Living area: 1015

#		Dimensions	sqft	Counted as living area
1	WC	5'4" x 5'9"	31 sq. ft	Yes
2	Sitting Room	11'9" x 12'4"	144 sq. ft	Yes
3	Dining Area	8'9" x 15'7"	137 sq. ft	Yes
4	Pantry	6'0" x 5'9"	35 sq. ft	Yes
5	Garage	20'1" x 19'10"	399 sq. ft	No
6	Foyer	4'11" x 17'1"	84 sq. ft	Yes
7	Living Room	16'8" x 19'1"	303 sq. ft	Yes
8	Kitchen	12'0" x 13'10"	167 sq. ft	Yes

6901 Sanguine Ter, Ampthill, VA, US**Room dimensions**

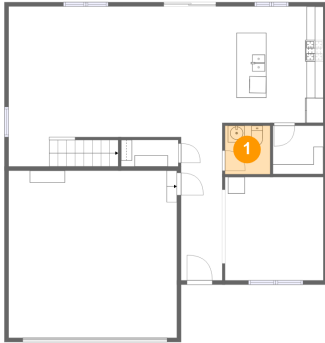
Floor 2

Total sqft: 1438 Living area: 1423

#		Dimensions	sqft	Counted as living area
9	Bedroom	11'1" x 11'10"	131 sq. ft	Yes
10	WC	3'0" x 6'4"	19 sq. ft	Yes
11	Electrical Room	5'1" x 2'11"	15 sq. ft	No
12	Primary Bedroom	20'1" x 16'2"	270 sq. ft	Yes
13	Laundry	8'4" x 5'8"	41 sq. ft	Yes
14	W.I.C.	10'0" x 6'9"	68 sq. ft	Yes
15	Bedroom	11'9" x 13'5"	152 sq. ft	Yes
16	Bath	17'1" x 12'10"	126 sq. ft	Yes
17	Bedroom	11'5" x 11'10"	135 sq. ft	Yes
18	Bath	6'0" x 10'4"	62 sq. ft	Yes
19	Hall	26'1" x 10'9"	203 sq. ft	Yes

6901 Sanguine Ter, Ampthill, VA, US

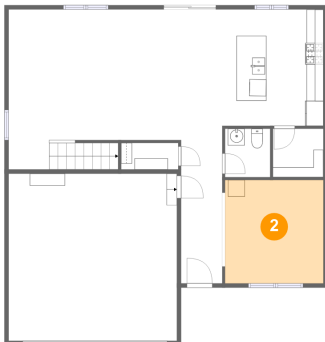
1 Floor 1 - WC



Dimensions: 5'4" x 5'9"
Area: 31 sq. ft
Counted as living area: Yes

Heated: Yes
Finished: Yes
Enclosed: Yes
Contiguous: Yes
Permitted: Yes
Wet space: Yes
Addition: No
Conversion: No

2 Floor 1 - Sitting Room

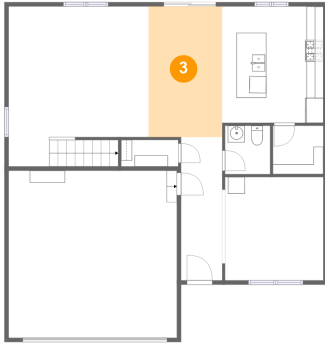


Dimensions: 11'9" x 12'4"
Area: 144 sq. ft
Counted as living area: Yes

Heated: Yes
Finished: Yes
Enclosed: Yes
Contiguous: Yes
Permitted: Yes
Wet space: No
Addition: No
Conversion: No

6901 Sanguine Ter,Amphill,VA,US

3 Floor 1 - Dining Area



Dimensions: 8'9" x 15'7"
Area: 137 sq. ft
Counted as living area: Yes

Heated: Yes
Finished: Yes
Enclosed: Yes
Contiguous: Yes
Permitted: Yes
Wet space: No
Addition: No
Conversion: No

4 Floor 1 - Pantry



Dimensions: 6'0" x 5'9"
Area: 35 sq. ft
Counted as living area: Yes

Heated: Yes
Finished: Yes
Enclosed: Yes
Contiguous: Yes
Permitted: Yes
Wet space: No
Addition: No
Conversion: No

5 Floor 1 - Garage

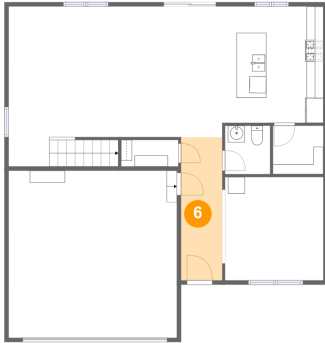


Dimensions: 20'1" x 19'10"
Area: 399 sq. ft
Counted as living area: No

Heated: No
Finished: No
Enclosed: Yes
Contiguous: Yes
Permitted: Yes
Wet space: No
Addition: No
Conversion: No

6901 Sanguine Ter,Amphill,VA,US

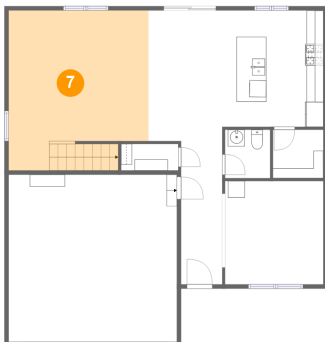
6 Floor 1 - Foyer



Dimensions: 4'11" x 17'1"
Area: 84 sq. ft
Counted as living area: Yes

Heated: Yes
Finished: Yes
Enclosed: Yes
Contiguous: Yes
Permitted: Yes
Wet space: No
Addition: No
Conversion: No

7 Floor 1 - Living Room



Dimensions: 16'8" x 19'1"
Area: 303 sq. ft
Counted as living area: Yes

Heated: Yes
Finished: Yes
Enclosed: Yes
Contiguous: Yes
Permitted: Yes
Wet space: No
Addition: No
Conversion: No

8 Floor 1 - Kitchen

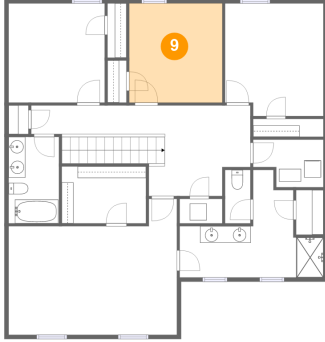


Dimensions: 12'0" x 13'10"
Area: 167 sq. ft
Counted as living area: Yes

Heated: Yes
Finished: Yes
Enclosed: Yes
Contiguous: Yes
Permitted: Yes
Wet space: No
Addition: No
Conversion: No

6901 Sanguine Ter,Amphill,VA,US

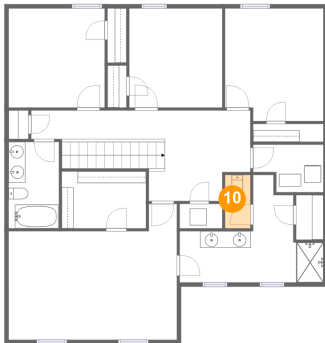
9 Floor 2 - Bedroom



Dimensions: 11'1" x 11'10"
Area: 131 sq. ft
Counted as living area: Yes

Heated: Yes
Finished: Yes
Enclosed: Yes
Contiguous: Yes
Permitted: Yes
Wet space: No
Addition: No
Conversion: No

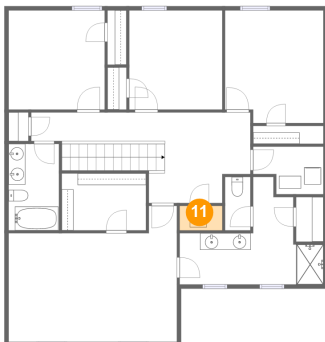
10 Floor 2 - WC



Dimensions: 3'0" x 6'4"
Area: 19 sq. ft
Counted as living area: Yes

Heated: Yes
Finished: Yes
Enclosed: Yes
Contiguous: Yes
Permitted: Yes
Wet space: Yes
Addition: No
Conversion: No

11 Floor 2 - Electrical Room

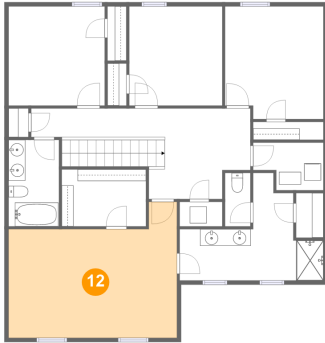


Dimensions: 5'1" x 2'11"
Area: 15 sq. ft
Counted as living area: No

Heated: No
Finished: No
Enclosed: Yes
Contiguous: Yes
Permitted: Yes
Wet space: No
Addition: No
Conversion: No

6901 Sanguine Ter,Amphill,VA,US

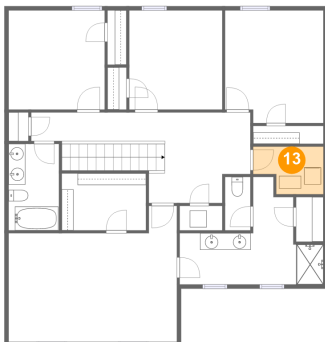
12 Floor 2 - Primary Bedroom



Dimensions: 20'1" x 16'2"
Area: 270 sq. ft
Counted as living area: Yes

Heated: Yes
Finished: Yes
Enclosed: Yes
Contiguous: Yes
Permitted: Yes
Wet space: No
Addition: No
Conversion: No

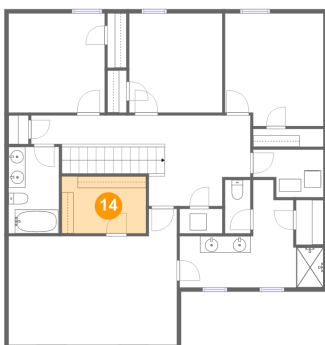
13 Floor 2 - Laundry



Dimensions: 8'4" x 5'8"
Area: 41 sq. ft
Counted as living area: Yes

Heated: Yes
Finished: Yes
Enclosed: Yes
Contiguous: Yes
Permitted: Yes
Wet space: No
Addition: No
Conversion: No

14 Floor 2 - W.I.C.

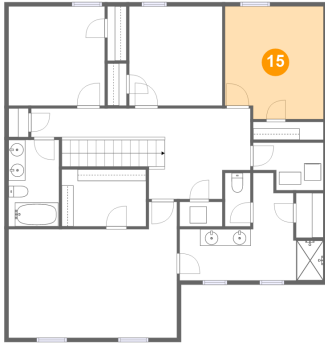


Dimensions: 10'0" x 6'9"
Area: 68 sq. ft
Counted as living area: Yes

Heated: Yes
Finished: Yes
Enclosed: Yes
Contiguous: Yes
Permitted: Yes
Wet space: No
Addition: No
Conversion: No

6901 Sanguine Ter,Amphill,VA,US

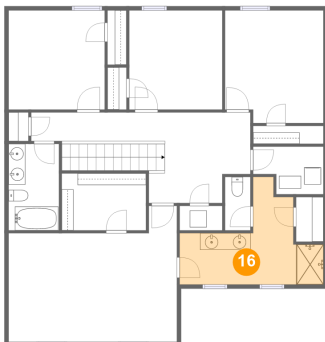
15 Floor 2 - Bedroom



Dimensions: 11'9" x 13'5"
Area: 152 sq. ft
Counted as living area: Yes

Heated: Yes
Finished: Yes
Enclosed: Yes
Contiguous: Yes
Permitted: Yes
Wet space: No
Addition: No
Conversion: No

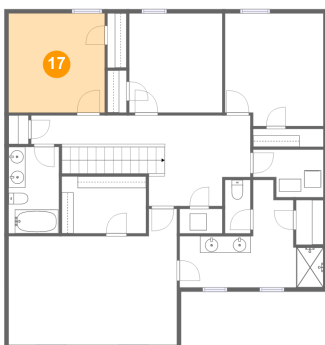
16 Floor 2 - Bath



Dimensions: 17'1" x 12'10"
Area: 126 sq. ft
Counted as living area: Yes

Heated: Yes
Finished: Yes
Enclosed: Yes
Contiguous: Yes
Permitted: Yes
Wet space: Yes
Addition: No
Conversion: No

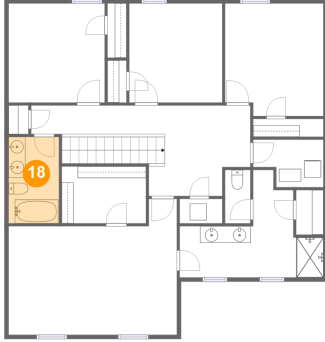
17 Floor 2 - Bedroom



Dimensions: 11'5" x 11'10"
Area: 135 sq. ft
Counted as living area: Yes

Heated: Yes
Finished: Yes
Enclosed: Yes
Contiguous: Yes
Permitted: Yes
Wet space: No
Addition: No
Conversion: No

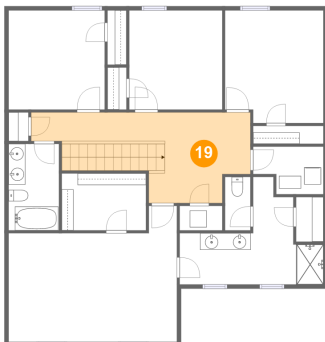
18 Floor 2 - Bath



Dimensions: 6'0" x 10'4"
Area: 62 sq. ft
Counted as living area: Yes

Heated: Yes
Finished: Yes
Enclosed: Yes
Contiguous: Yes
Permitted: Yes
Wet space: Yes
Addition: No
Conversion: No

19 Floor 2 - Hall



Dimensions: 26'1" x 10'9"
Area: 203 sq. ft
Counted as living area: Yes

Heated: Yes
Finished: Yes
Enclosed: Yes
Contiguous: Yes
Permitted: Yes
Wet space: No
Addition: No
Conversion: No