

Home report

620 Alma St,Port Perry,ON,CA



Total Area: 3002 sq. ft

Below Ground: 1367 sq. ft, Floor 2: 1635 sq. ft

Excluded: Storage 109 sq. ft, Utility 39 sq. ft, Garage 334 sq. ft, Patio 503 sq. ft, Fireplace 10 sq. ft, Walls: 230 sq. ft

Property summary



2
Floors



3
Bedrooms



3
Bathrooms

Home report

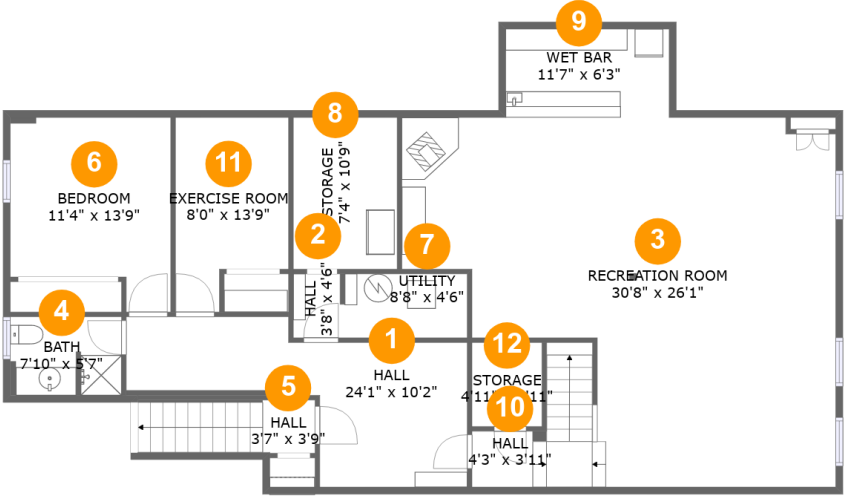
620 Alma St,Port Perry,ON,CA

 **1**
Half baths

 **1**
Garages

Home report

620 Alma St,Port Perry,ON,CA



Room dimensions

Floor 1 Below ground Total:1367sqft Excluded: 148sqft

| # | | Max Dimensions | sqft | Included |
|----|-----------------|----------------|------------|----------|
| 1 | Hall | 24'1" x 10'2" | 178 sq. ft | Yes |
| 2 | Hall | 3'8" x 4'6" | 16 sq. ft | Yes |
| 3 | Recreation Room | 30'8" x 26'1" | 665 sq. ft | Yes |
| 4 | Bath | 7'10" x 5'7" | 43 sq. ft | Yes |
| 5 | Hall | 3'7" x 3'9" | 47 sq. ft | Yes |
| 6 | Bedroom | 11'4" x 13'9" | 136 sq. ft | Yes |
| 7 | Utility | 8'8" x 4'6" | 39 sq. ft | No |
| 8 | Storage | 7'4" x 10'9" | 79 sq. ft | No |
| 9 | Wet Bar | 11'7" x 6'3" | 72 sq. ft | Yes |
| 10 | Hall | 4'3" x 3'11" | 18 sq. ft | Yes |
| 11 | Exercise Room | 8'0" x 13'9" | 95 sq. ft | Yes |

Home report

620 Alma St,Port Perry,ON,CA

| # | | Max Dimensions | sqft | Included |
|----|---------|----------------|-----------|----------|
| 12 | Storage | 4'11" x 5'11" | 29 sq. ft | No |

Home report

620 Alma St,Port Perry,ON,CA



Room dimensions

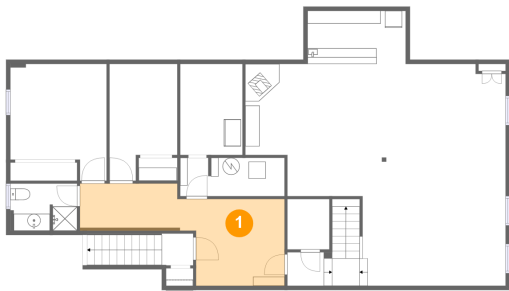
Floor 2 Total:1635sqft Excluded: 847sqft

| # | | Max Dimensions | sqft | Included |
|----|-----------------|-----------------|------------|----------|
| 13 | Primary Bedroom | 11'9" x 14'8" | 155 sq. ft | Yes |
| 14 | Garage | 17'10" x 20'10" | 334 sq. ft | No |
| 15 | Patio | 36'7" x 11'9" | 358 sq. ft | No |
| 16 | W.I.C. | 4'11" x 4'8" | 23 sq. ft | Yes |
| 17 | Kitchen | 11'9" x 11'3" | 136 sq. ft | Yes |
| 18 | Bath | 5'5" x 7'4" | 40 sq. ft | Yes |
| 19 | Family Room | 16'9" x 11'3" | 196 sq. ft | Yes |
| 20 | Office | 9'5" x 11'2" | 105 sq. ft | Yes |
| 21 | Patio | 20'2" x 13'1" | 145 sq. ft | No |
| 22 | Foyer | 14'2" x 14'7" | 126 sq. ft | Yes |
| 23 | Hall | 20'0" x 3'1" | 62 sq. ft | Yes |

620 Alma St,Port Perry,ON,CA

| # | | Max Dimensions | sqft | Included |
|----|-------------|----------------|------------|----------|
| 24 | WC | 3'7" x 8'9" | 27 sq. ft | Yes |
| 25 | Living Room | 11'11" x 14'7" | 173 sq. ft | Yes |
| 26 | Bedroom | 9'5" x 11'2" | 105 sq. ft | Yes |
| 27 | Dining Area | 11'7" x 17'6" | 209 sq. ft | Yes |
| 28 | Room | 7'1" x 11'5" | 51 sq. ft | Yes |
| 29 | Bath | 5'7" x 11'3" | 63 sq. ft | Yes |
| 30 | Laundry | 4'11" x 4'10" | 24 sq. ft | Yes |

1 Floor 1 - Hall



Max Dimensions: 24'1" x 10'2"
Calculated Area: 178 sq. ft
Included: Yes

Heated: Yes
Finished: Yes
Enclosed: Yes
Contiguous: Yes
Permitted: Yes
Wet space: No
Addition: No
Conversion: No

2 Floor 1 - Hall



Max Dimensions: 3'8" x 4'6"
Calculated Area: 16 sq. ft
Included: Yes

Heated: Yes
Finished: Yes
Enclosed: Yes
Contiguous: Yes
Permitted: Yes
Wet space: No
Addition: No
Conversion: No

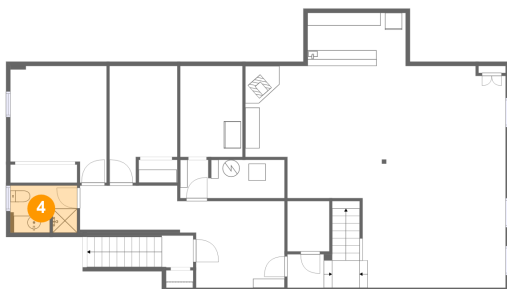
3 Floor 1 - Recreation Room



Max Dimensions: 30'8" x 26'1"
Calculated Area: 665 sq. ft
Included: Yes

Heated: Yes
Finished: Yes
Enclosed: Yes
Contiguous: Yes
Permitted: Yes
Wet space: No
Addition: No
Conversion: No

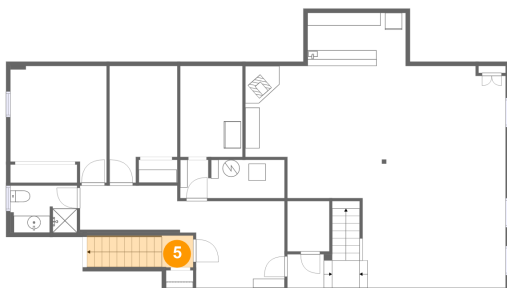
4 Floor 1 - Bath



Max Dimensions: 7'10" x 5'7"
Calculated Area: 43 sq. ft
Included: Yes

Heated: Yes
Finished: Yes
Enclosed: Yes
Contiguous: Yes
Permitted: Yes
Wet space: Yes
Addition: No
Conversion: No

5 Floor 1 - Hall



Max Dimensions: 3'7" x 3'9"
Calculated Area: 47 sq. ft
Included: Yes

Heated: Yes
Finished: Yes
Enclosed: Yes
Contiguous: Yes
Permitted: Yes
Wet space: No
Addition: No
Conversion: No

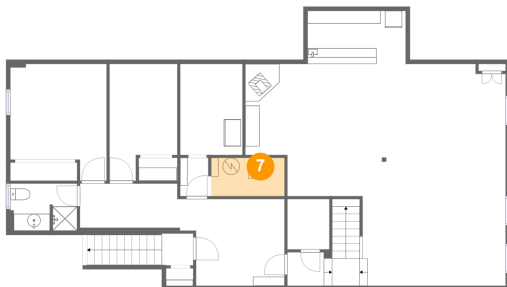
6 Floor 1 - Bedroom



Max Dimensions: 11'4" x 13'9"
Calculated Area: 136 sq. ft
Included: Yes

Heated: Yes
Finished: Yes
Enclosed: Yes
Contiguous: Yes
Permitted: Yes
Wet space: No
Addition: No
Conversion: No

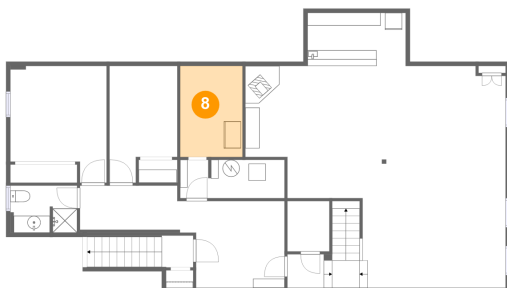
7 Floor 1 - Utility



Max Dimensions: 8'8" x 4'6"
Calculated Area: 39 sq. ft
Included: No

Heated: Yes
Finished: No
Enclosed: Yes
Contiguous: Yes
Permitted: Yes
Wet space: No
Addition: No
Conversion: No

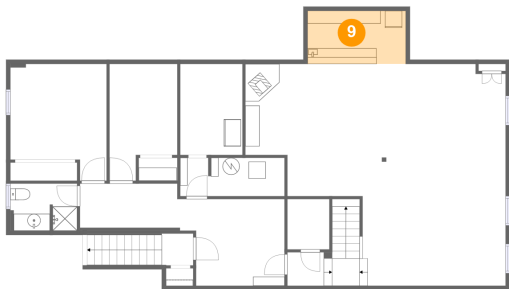
8 Floor 1 - Storage



Max Dimensions: 7'4" x 10'9"
Calculated Area: 79 sq. ft
Included: No

Heated: No
Finished: No
Enclosed: No
Contiguous: Yes
Permitted: Yes
Wet space: No
Addition: No
Conversion: No

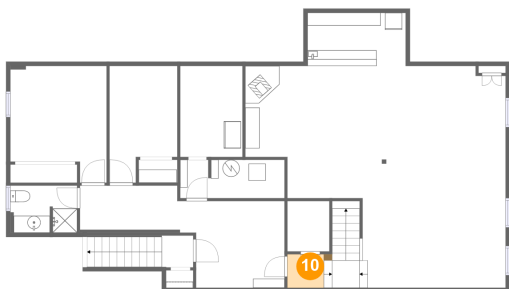
9 Floor 1 - Wet Bar



Max Dimensions: 11'7" x 6'3"
Calculated Area: 72 sq. ft
Included: Yes

Heated: Yes
Finished: Yes
Enclosed: Yes
Contiguous: Yes
Permitted: Yes
Wet space: No
Addition: No
Conversion: No

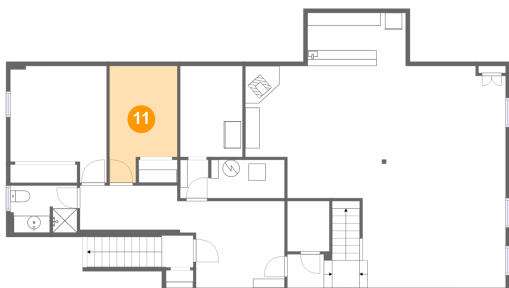
10 Floor 1 - Hall



Max Dimensions: 4'3" x 3'11"
Calculated Area: 18 sq. ft
Included: Yes

Heated: Yes
Finished: Yes
Enclosed: Yes
Contiguous: Yes
Permitted: Yes
Wet space: No
Addition: No
Conversion: No

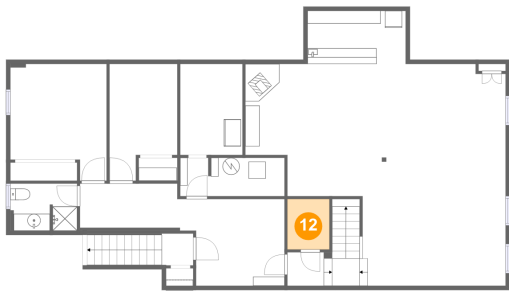
11 Floor 1 - Exercise Room



Max Dimensions: 8'0" x 13'9"
Calculated Area: 95 sq. ft
Included: Yes

Heated: Yes
Finished: Yes
Enclosed: Yes
Contiguous: Yes
Permitted: Yes
Wet space: No
Addition: No
Conversion: No

12 Floor 1 - Storage



Max Dimensions: 4'11" x 5'11"
Calculated Area: 29 sq. ft
Included: No

Heated: No
Finished: No
Enclosed: No
Contiguous: Yes
Permitted: Yes
Wet space: No
Addition: No
Conversion: No

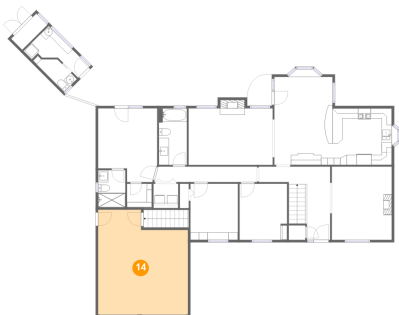
13 Floor 2 - Primary Bedroom



Max Dimensions: 11'9" x 14'8"
Calculated Area: 155 sq. ft
Included: Yes

Heated: Yes
Finished: Yes
Enclosed: Yes
Contiguous: Yes
Permitted: Yes
Wet space: No
Addition: No
Conversion: No

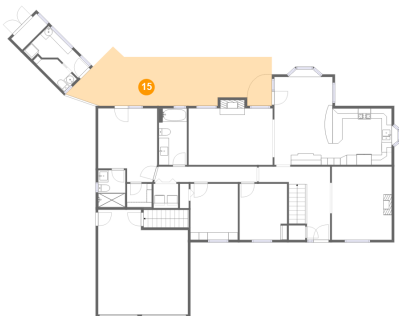
14 Floor 2 - Garage



Max Dimensions: 17'10" x 20'10"
Calculated Area: 334 sq. ft
Included: No

Heated: No
Finished: No
Enclosed: Yes
Contiguous: Yes
Permitted: Yes
Wet space: No
Addition: No
Conversion: No

15 Floor 2 - Patio



Max Dimensions: 36'7" x 11'9"
Calculated Area: 358 sq. ft
Included: No

Heated: No
Finished: Yes
Enclosed: No
Contiguous: Yes
Permitted: Yes
Wet space: No
Addition: No
Conversion: No

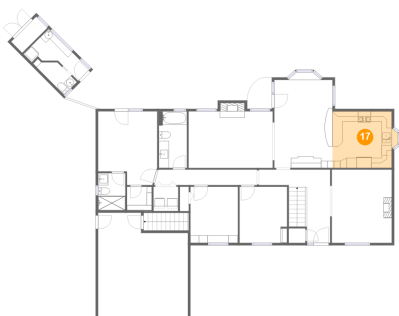
16 Floor 2 - W.I.C.



Max Dimensions: 4'11" x 4'8"
Calculated Area: 23 sq. ft
Included: Yes

Heated: Yes
Finished: Yes
Enclosed: Yes
Contiguous: Yes
Permitted: Yes
Wet space: No
Addition: No
Conversion: No

17 Floor 2 - Kitchen



Max Dimensions: 11'9" x 11'3"
Calculated Area: 136 sq. ft
Included: Yes

Heated: Yes
Finished: Yes
Enclosed: Yes
Contiguous: Yes
Permitted: Yes
Wet space: No
Addition: No
Conversion: No

18 Floor 2 - Bath



Max Dimensions: 5'5" x 7'4"
Calculated Area: 40 sq. ft
Included: Yes

Heated: Yes
Finished: Yes
Enclosed: Yes
Contiguous: Yes
Permitted: Yes
Wet space: Yes
Addition: No
Conversion: No

19 Floor 2 - Family Room



Max Dimensions: 16'9" x 11'3"
Calculated Area: 196 sq. ft
Included: Yes

Heated: Yes
Finished: Yes
Enclosed: Yes
Contiguous: Yes
Permitted: Yes
Wet space: No
Addition: No
Conversion: No

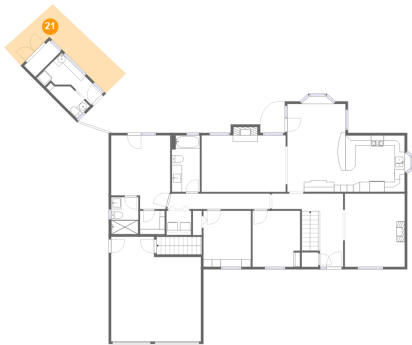
20 Floor 2 - Office



Max Dimensions: 9'5" x 11'2"
Calculated Area: 105 sq. ft
Included: Yes

Heated: Yes
Finished: Yes
Enclosed: Yes
Contiguous: Yes
Permitted: Yes
Wet space: No
Addition: No
Conversion: No

21 Floor 2 - Patio



Max Dimensions: 20'2" x 13'1"
Calculated Area: 145 sq. ft
Included: No

Heated: No
Finished: Yes
Enclosed: No
Contiguous: Yes
Permitted: Yes
Wet space: No
Addition: No
Conversion: No

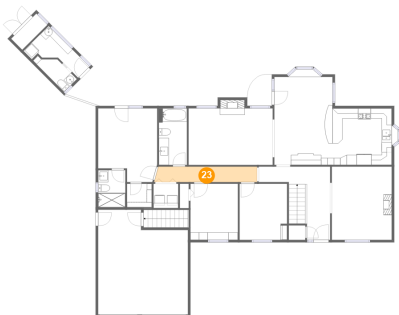
22 Floor 2 - Foyer



Max Dimensions: 14'2" x 14'7"
Calculated Area: 126 sq. ft
Included: Yes

Heated: Yes
Finished: Yes
Enclosed: Yes
Contiguous: Yes
Permitted: Yes
Wet space: No
Addition: No
Conversion: No

23 Floor 2 - Hall



Max Dimensions: 20'0" x 3'1"
Calculated Area: 62 sq. ft
Included: Yes

Heated: Yes
Finished: Yes
Enclosed: Yes
Contiguous: Yes
Permitted: Yes
Wet space: No
Addition: No
Conversion: No

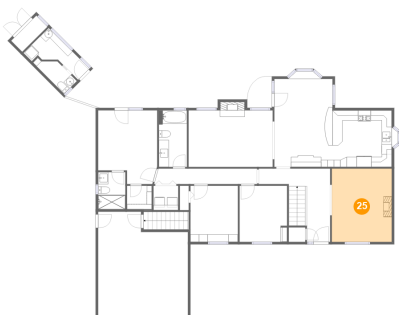
24 Floor 2 - WC



Max Dimensions: 3'7" x 8'9"
Calculated Area: 27 sq. ft
Included: Yes

Heated: Yes
Finished: Yes
Enclosed: Yes
Contiguous: Yes
Permitted: Yes
Wet space: Yes
Addition: No
Conversion: No

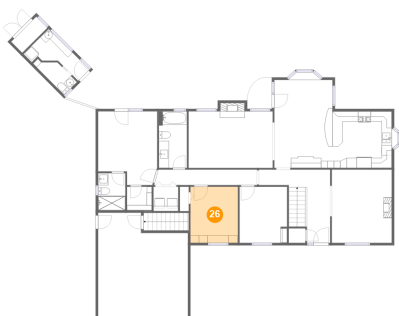
25 Floor 2 - Living Room



Max Dimensions: 11'11" x 14'7"
Calculated Area: 173 sq. ft
Included: Yes

Heated: Yes
Finished: Yes
Enclosed: Yes
Contiguous: Yes
Permitted: Yes
Wet space: No
Addition: No
Conversion: No

26 Floor 2 - Bedroom



Max Dimensions: 9'5" x 11'2"
Calculated Area: 105 sq. ft
Included: Yes

Heated: Yes
Finished: Yes
Enclosed: Yes
Contiguous: Yes
Permitted: Yes
Wet space: No
Addition: No
Conversion: No

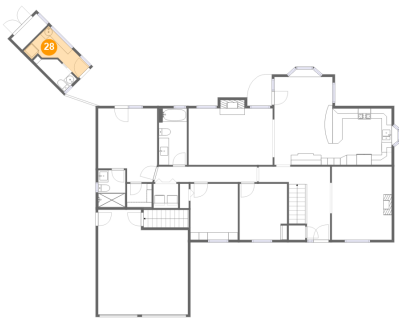
27 Floor 2 - Dining Area



Max Dimensions: 11'7" x 17'6"
Calculated Area: 209 sq. ft
Included: Yes

Heated: Yes
Finished: Yes
Enclosed: Yes
Contiguous: Yes
Permitted: Yes
Wet space: No
Addition: No
Conversion: No

28 Floor 2 - Room



Max Dimensions: 7'1" x 11'5"
Calculated Area: 51 sq. ft
Included: Yes

Heated: Yes
Finished: Yes
Enclosed: Yes
Contiguous: Yes
Permitted: Yes
Wet space: No
Addition: No
Conversion: No

29 Floor 2 - Bath



Max Dimensions: 5'7" x 11'3"
Calculated Area: 63 sq. ft
Included: Yes

Heated: Yes
Finished: Yes
Enclosed: Yes
Contiguous: Yes
Permitted: Yes
Wet space: Yes
Addition: No
Conversion: No

30 Floor 2 - Laundry



Max Dimensions: 4'11" x 4'10"
Calculated Area: 24 sq. ft
Included: Yes

Heated: Yes
Finished: Yes
Enclosed: Yes
Contiguous: Yes
Permitted: Yes
Wet space: No
Addition: No
Conversion: No