


# 237 Pleasant Hill Dr, Boyce, VA, US



## Property summary


 **1** Garages

 **3** Bedrooms

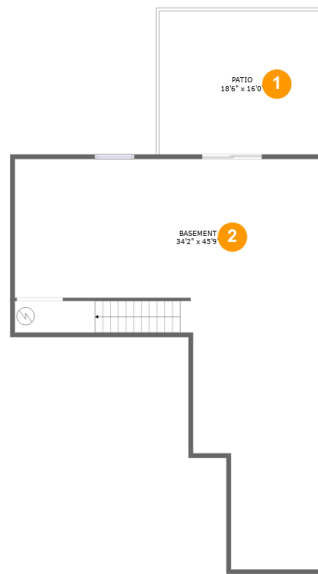
 **2** Bathrooms

 **1** Half baths

 **3** Floors

 **2,417** Gross living area sqft

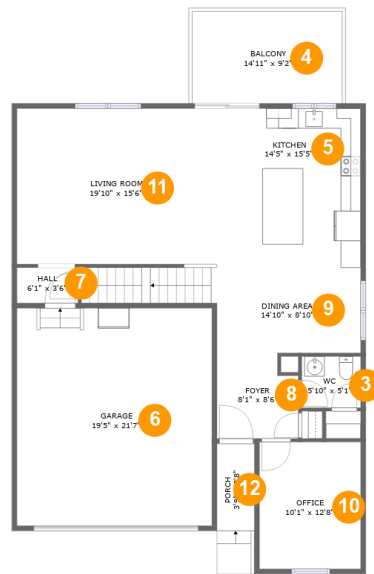
 **4,422** Total sqft

**237 Pleasant Hill Dr, Boyce, VA, US****Room dimensions**

Floor 1

Total sqft: 1362 Living area: 0

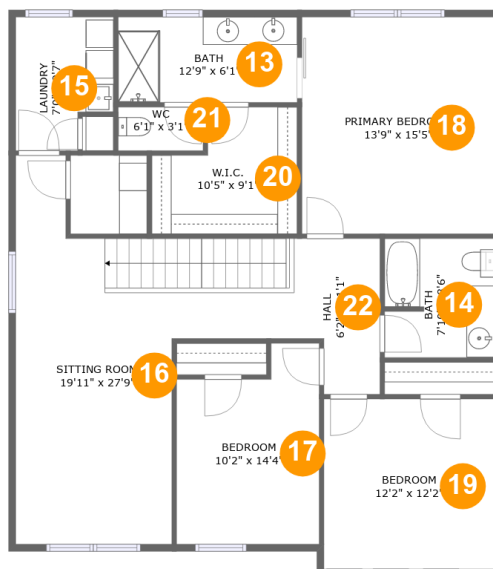
#		Dimensions	sqft	Counted as living area
1	Patio	18'6" x 16'0"	297 sq. ft	No
2	Basement	34'2" x 45'9"	978 sq. ft	No

**237 Pleasant Hill Dr, Boyce, VA, US****Room dimensions**

Floor 2

Total sqft: 1677 Living area: 1065

#		Dimensions	sqft	Counted as living area
3	WC	5'10" x 5'1"	30 sq. ft	Yes
4	Balcony	14'11" x 9'2"	136 sq. ft	No
5	Kitchen	14'5" x 15'5"	223 sq. ft	Yes
6	Garage	19'5" x 21'7"	419 sq. ft	No
7	Hall	6'1" x 3'6"	21 sq. ft	Yes
8	Foyer	8'1" x 8'6"	64 sq. ft	Yes
9	Dining Area	14'10" x 8'10"	175 sq. ft	Yes
10	Office	10'1" x 12'8"	127 sq. ft	Yes
11	Living Room	19'10" x 15'6"	306 sq. ft	Yes
12	Porch	3'9" x 8'8"	32 sq. ft	No

**237 Pleasant Hill Dr, Boyce, VA, US****Room dimensions**

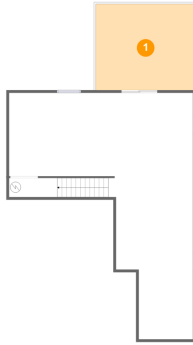
Floor 3

Total sqft: 1383 Living area: 1352

#		Dimensions	sqft	Counted as living area
13	Bath	12'9" x 6'1"	78 sq. ft	Yes
14	Bath	7'10" x 8'6"	66 sq. ft	Yes
15	Laundry	7'0" x 9'7"	60 sq. ft	Yes
16	Sitting Room	19'11" x 27'9"	327 sq. ft	Yes
17	Bedroom	10'2" x 14'4"	129 sq. ft	Yes
18	Primary Bedroom	13'9" x 15'5"	213 sq. ft	Yes
19	Bedroom	12'2" x 12'2"	148 sq. ft	Yes
20	W.I.C.	10'5" x 9'1"	80 sq. ft	Yes
21	WC	6'1" x 3'1"	19 sq. ft	Yes
22	Hall	6'2" x 11'1"	60 sq. ft	Yes

# 237 Pleasant Hill Dr, Boyce, VA, US

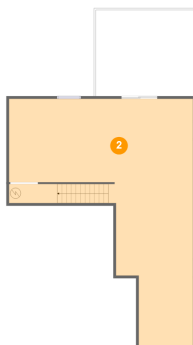
## 1 Floor 1 - Patio



**Dimensions:** 18'6" x 16'0"  
**Area:** 297 sq. ft  
**Counted as living area:** No

**Heated:** No  
**Finished:** Yes  
**Enclosed:** No  
**Contiguous:** Yes  
**Permitted:** Yes  
**Wet space:** No  
**Addition:** No  
**Conversion:** No

## 2 Floor 1 - Basement

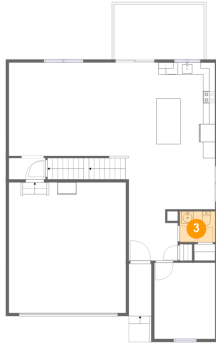


**Dimensions:** 34'2" x 45'9"  
**Area:** 978 sq. ft  
**Counted as living area:** No

**Heated:** Yes  
**Finished:** No  
**Enclosed:** Yes  
**Contiguous:** Yes  
**Permitted:** Yes  
**Wet space:** No  
**Addition:** No  
**Conversion:** No

# 237 Pleasant Hill Dr, Boyce, VA, US

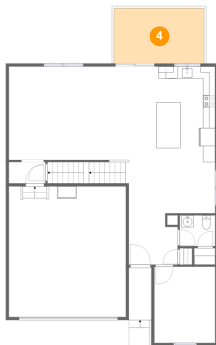
## 3 Floor 2 - WC



Dimensions: 5'10" x 5'1"  
Area: 30 sq. ft  
Counted as living area: Yes

Heated: Yes  
Finished: Yes  
Enclosed: Yes  
Contiguous: Yes  
Permitted: Yes  
Wet space: Yes  
Addition: No  
Conversion: No

## 4 Floor 2 - Balcony



Dimensions: 14'11" x 9'2"  
Area: 136 sq. ft  
Counted as living area: No

Heated: No  
Finished: Yes  
Enclosed: No  
Contiguous: Yes  
Permitted: Yes  
Wet space: No  
Addition: No  
Conversion: No

## 5 Floor 2 - Kitchen

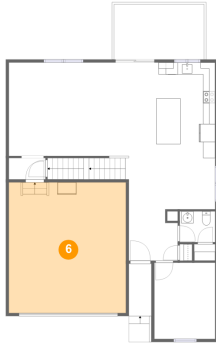


Dimensions: 14'5" x 15'5"  
Area: 223 sq. ft  
Counted as living area: Yes

Heated: Yes  
Finished: Yes  
Enclosed: Yes  
Contiguous: Yes  
Permitted: Yes  
Wet space: No  
Addition: No  
Conversion: No

# 237 Pleasant Hill Dr, Boyce, VA, US

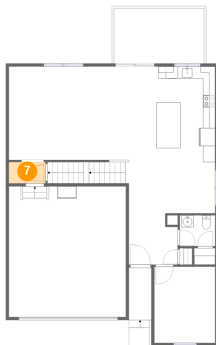
## 6 Floor 2 - Garage



Dimensions: 19'5" x 21'7"  
Area: 419 sq. ft  
Counted as living area: No

Heated: No  
Finished: No  
Enclosed: Yes  
Contiguous: Yes  
Permitted: Yes  
Wet space: No  
Addition: No  
Conversion: No

## 7 Floor 2 - Hall



Dimensions: 6'1" x 3'6"  
Area: 21 sq. ft  
Counted as living area: Yes

Heated: Yes  
Finished: Yes  
Enclosed: Yes  
Contiguous: Yes  
Permitted: Yes  
Wet space: No  
Addition: No  
Conversion: No

## 8 Floor 2 - Foyer

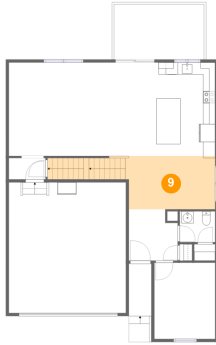


Dimensions: 8'1" x 8'6"  
Area: 64 sq. ft  
Counted as living area: Yes

Heated: Yes  
Finished: Yes  
Enclosed: Yes  
Contiguous: Yes  
Permitted: Yes  
Wet space: No  
Addition: No  
Conversion: No

# 237 Pleasant Hill Dr, Boyce, VA, US

## 9 Floor 2 - Dining Area



Dimensions: 14'10" x 8'10"  
Area: 175 sq. ft  
Counted as living area: Yes

Heated: Yes  
Finished: Yes  
Enclosed: Yes  
Contiguous: Yes  
Permitted: Yes  
Wet space: No  
Addition: No  
Conversion: No

## 10 Floor 2 - Office



Dimensions: 10'1" x 12'8"  
Area: 127 sq. ft  
Counted as living area: Yes

Heated: Yes  
Finished: Yes  
Enclosed: Yes  
Contiguous: Yes  
Permitted: Yes  
Wet space: No  
Addition: No  
Conversion: No

## 11 Floor 2 - Living Room



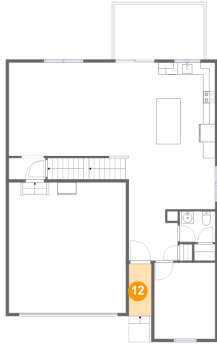
Dimensions: 19'10" x 15'6"  
Area: 306 sq. ft  
Counted as living area: Yes

Heated: Yes  
Finished: Yes  
Enclosed: Yes  
Contiguous: Yes  
Permitted: Yes  
Wet space: No  
Addition: No  
Conversion: No



# 237 Pleasant Hill Dr, Boyce, VA, US

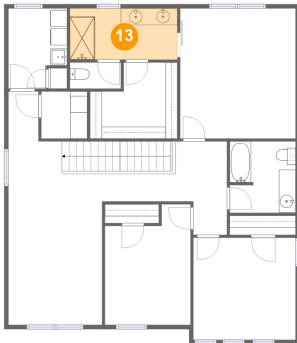
## 12 Floor 2 - Porch



Dimensions: 3'9" x 8'8"  
Area: 32 sq. ft  
Counted as living area: No

Heated: No  
Finished: Yes  
Enclosed: No  
Contiguous: Yes  
Permitted: Yes  
Wet space: No  
Addition: No  
Conversion: No

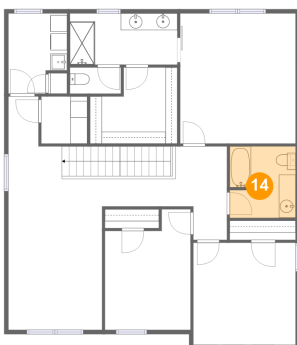
## 13 Floor 3 - Bath



Dimensions: 12'9" x 6'1"  
Area: 78 sq. ft  
Counted as living area: Yes

Heated: Yes  
Finished: Yes  
Enclosed: Yes  
Contiguous: Yes  
Permitted: Yes  
Wet space: Yes  
Addition: No  
Conversion: No

## 14 Floor 3 - Bath

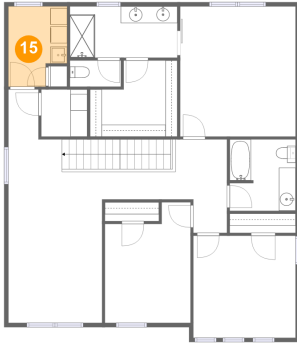


Dimensions: 7'10" x 8'6"  
Area: 66 sq. ft  
Counted as living area: Yes

Heated: Yes  
Finished: Yes  
Enclosed: Yes  
Contiguous: Yes  
Permitted: Yes  
Wet space: Yes  
Addition: No  
Conversion: No

# 237 Pleasant Hill Dr, Boyce, VA, US

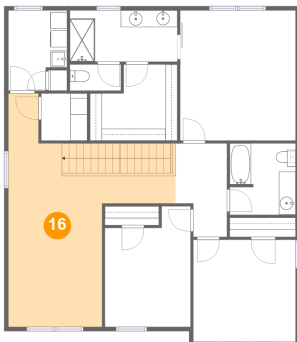
## 15 Floor 3 - Laundry



Dimensions: 7'0" x 9'7"  
Area: 60 sq. ft  
Counted as living area: Yes

Heated: Yes  
Finished: Yes  
Enclosed: Yes  
Contiguous: Yes  
Permitted: Yes  
Wet space: No  
Addition: No  
Conversion: No

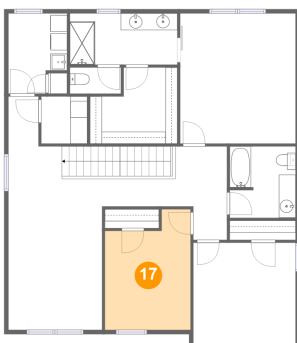
## 16 Floor 3 - Sitting Room



Dimensions: 19'11" x 27'9"  
Area: 327 sq. ft  
Counted as living area: Yes

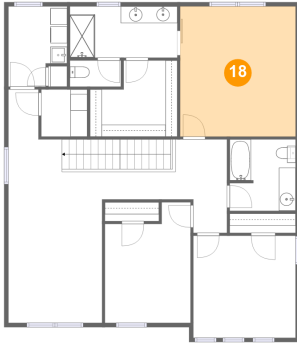
Heated: Yes  
Finished: Yes  
Enclosed: Yes  
Contiguous: Yes  
Permitted: Yes  
Wet space: No  
Addition: No  
Conversion: No

## 17 Floor 3 - Bedroom



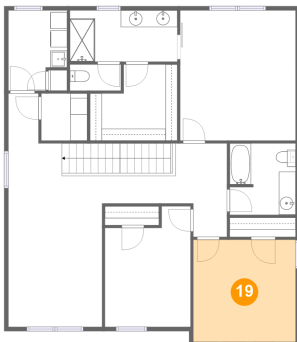
Dimensions: 10'2" x 14'4"  
Area: 129 sq. ft  
Counted as living area: Yes

Heated: Yes  
Finished: Yes  
Enclosed: Yes  
Contiguous: Yes  
Permitted: Yes  
Wet space: No  
Addition: No  
Conversion: No

**237 Pleasant Hill Dr, Boyce, VA, US****18 Floor 3 - Primary Bedroom**

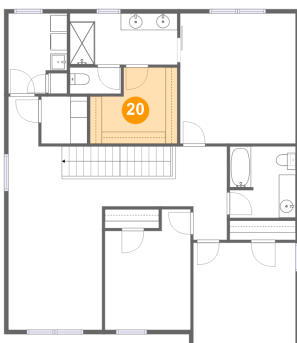
**Dimensions:** 13'9" x 15'5"  
**Area:** 213 sq. ft  
**Counted as living area:** Yes

**Heated:** Yes  
**Finished:** Yes  
**Enclosed:** Yes  
**Contiguous:** Yes  
**Permitted:** Yes  
**Wet space:** No  
**Addition:** No  
**Conversion:** No

**19 Floor 3 - Bedroom**

**Dimensions:** 12'2" x 12'2"  
**Area:** 148 sq. ft  
**Counted as living area:** Yes

**Heated:** Yes  
**Finished:** Yes  
**Enclosed:** Yes  
**Contiguous:** Yes  
**Permitted:** Yes  
**Wet space:** No  
**Addition:** No  
**Conversion:** No

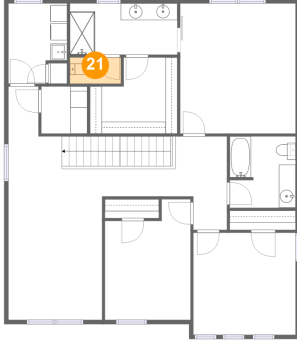
**20 Floor 3 - W.I.C.**

**Dimensions:** 10'5" x 9'1"  
**Area:** 80 sq. ft  
**Counted as living area:** Yes

**Heated:** Yes  
**Finished:** Yes  
**Enclosed:** Yes  
**Contiguous:** Yes  
**Permitted:** Yes  
**Wet space:** No  
**Addition:** No  
**Conversion:** No

# 237 Pleasant Hill Dr, Boyce, VA, US

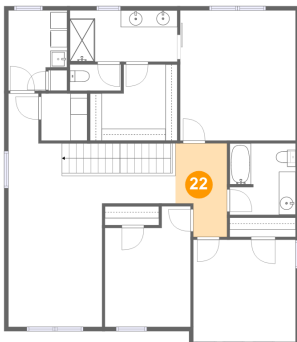
## 21 Floor 3 - WC



Dimensions: 6'1" x 3'1"  
Area: 19 sq. ft  
Counted as living area: Yes

Heated: Yes  
Finished: Yes  
Enclosed: Yes  
Contiguous: Yes  
Permitted: Yes  
Wet space: Yes  
Addition: No  
Conversion: No

## 22 Floor 3 - Hall



Dimensions: 6'2" x 11'1"  
Area: 60 sq. ft  
Counted as living area: Yes

Heated: Yes  
Finished: Yes  
Enclosed: Yes  
Contiguous: Yes  
Permitted: Yes  
Wet space: No  
Addition: No  
Conversion: No