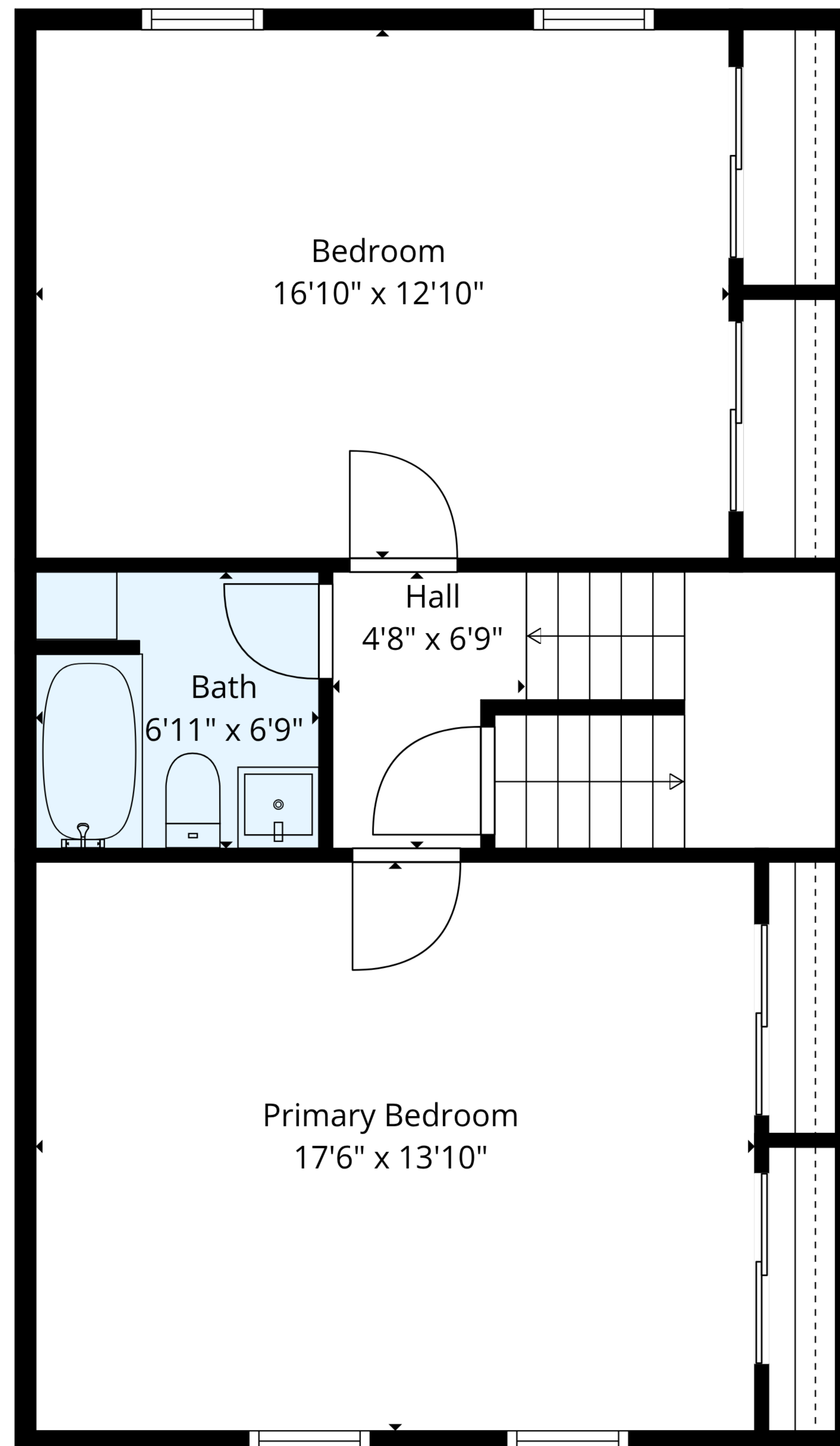


TOTAL: 1739 sq. ft

1st floor: 645 sq. ft, 2nd floor: 663 sq. ft, 3rd floor: 431 sq. ft

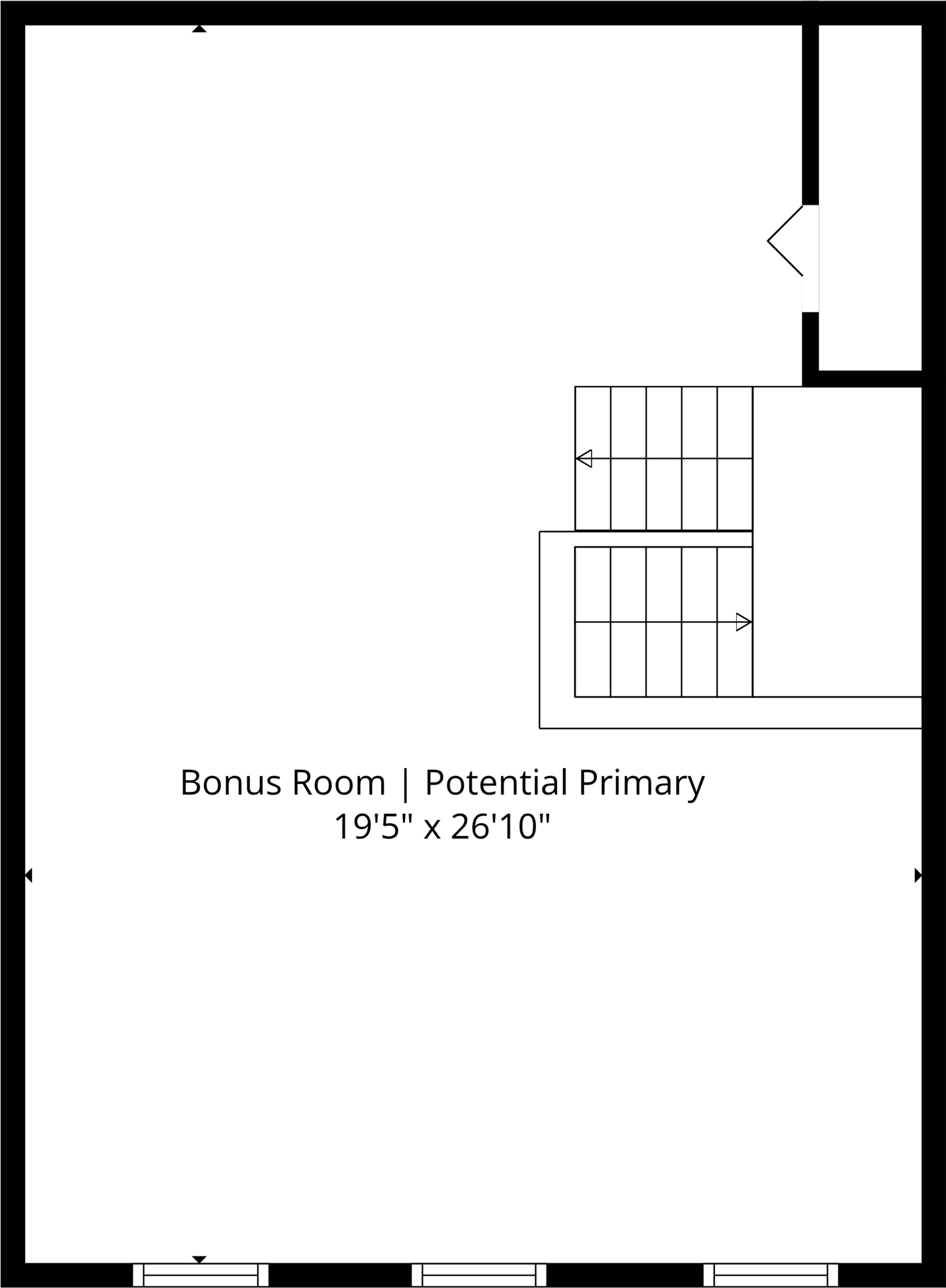
EXCLUDED AREAS: PORCH: 35 sq. ft, DECK: 98 sq. ft, BAY WINDOW: 8 sq. ft,

UNDEFINED: 17 sq. ft, LOW CEILING: 74 sq. ft, WALLS: 105 sq. ft



TOTAL: 1739 sq. ft

1st floor: 645 sq. ft, 2nd floor: 663 sq. ft, 3rd floor: 431 sq. ft
EXCLUDED AREAS: PORCH: 35 sq. ft, DECK: 98 sq. ft, BAY WINDOW: 8 sq. ft,
UNDEFINED: 17 sq. ft, LOW CEILING: 74 sq. ft, WALLS: 105 sq. ft



Bonus Room | Potential Primary
19'5" x 26'10"

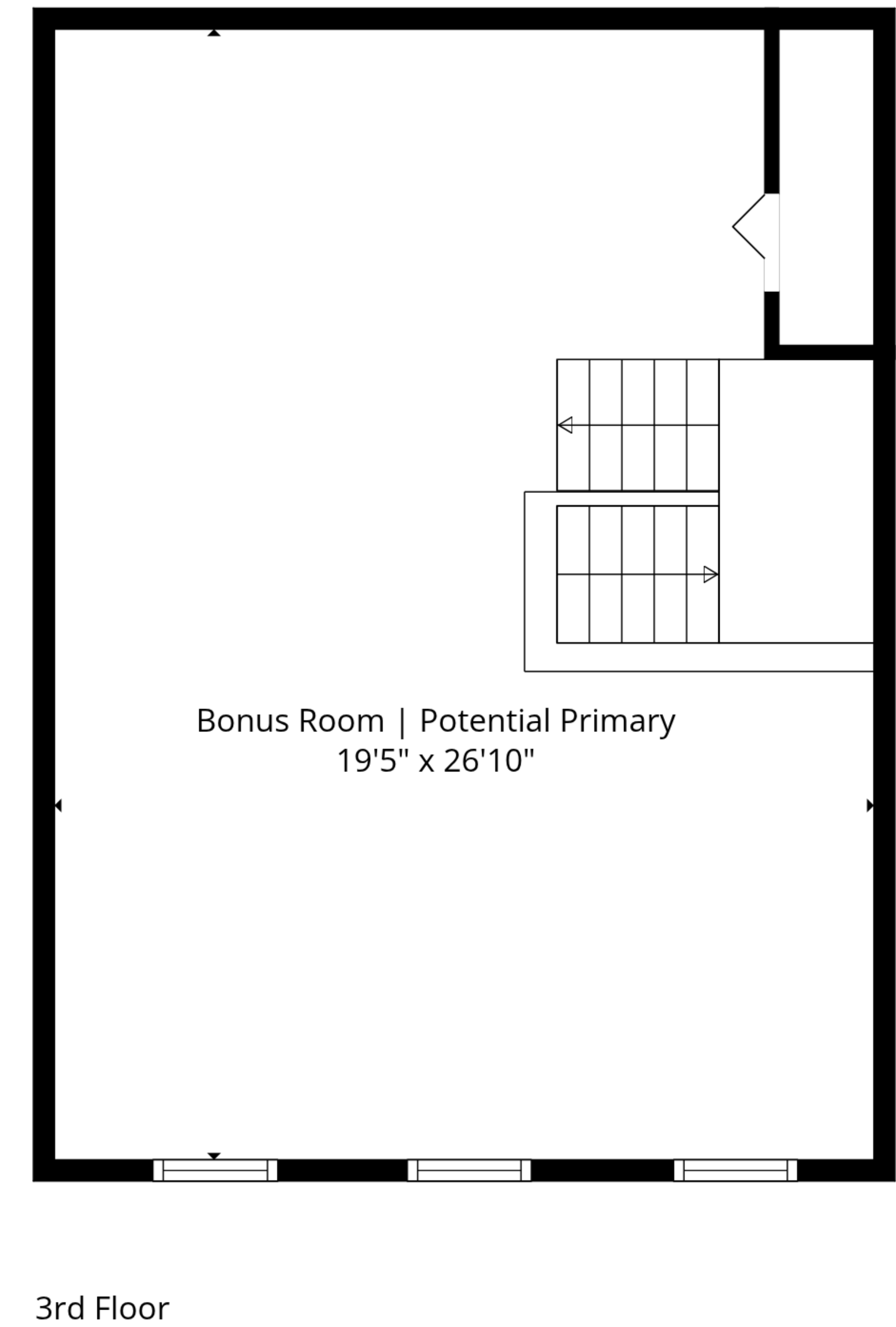
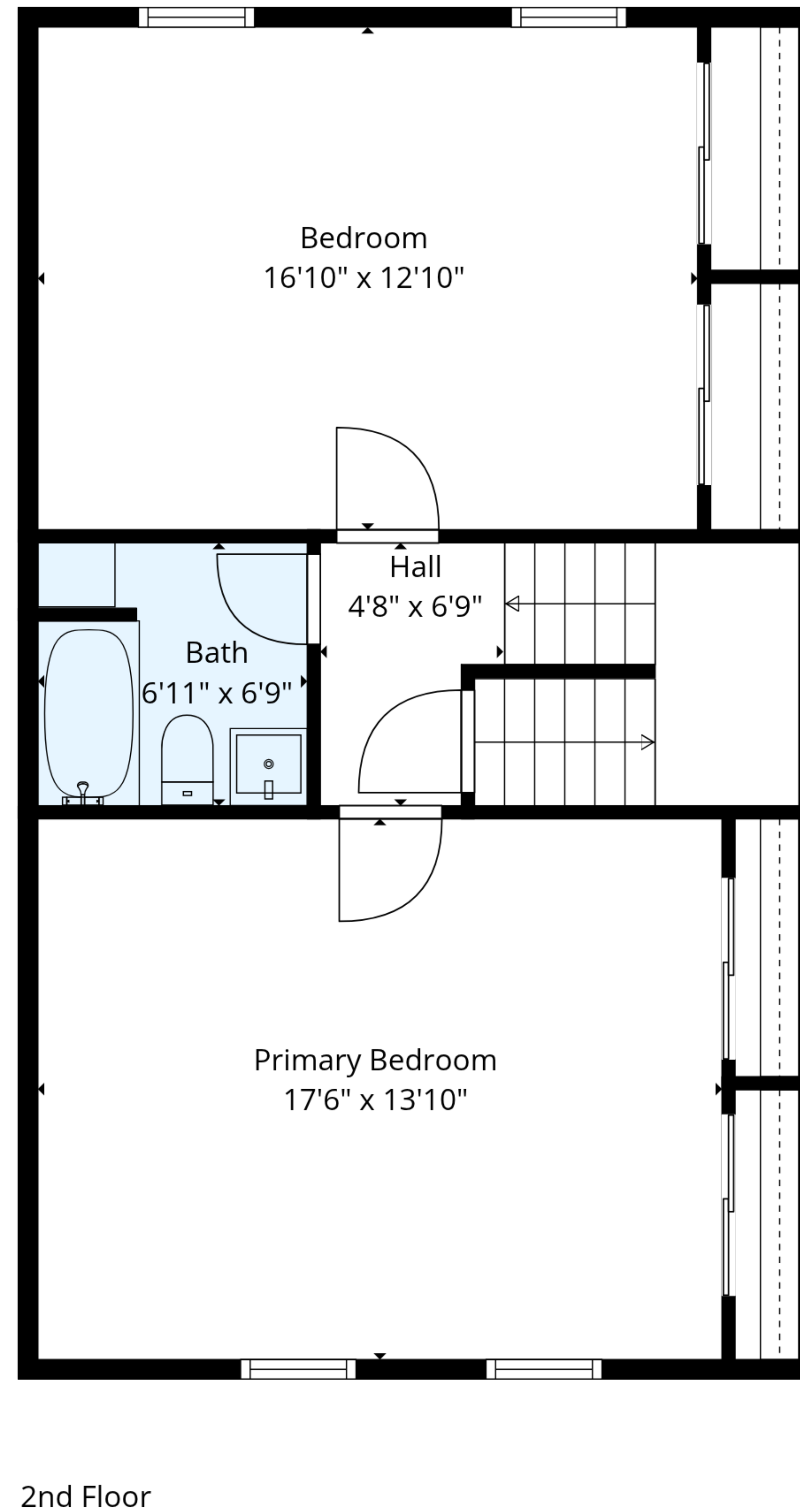
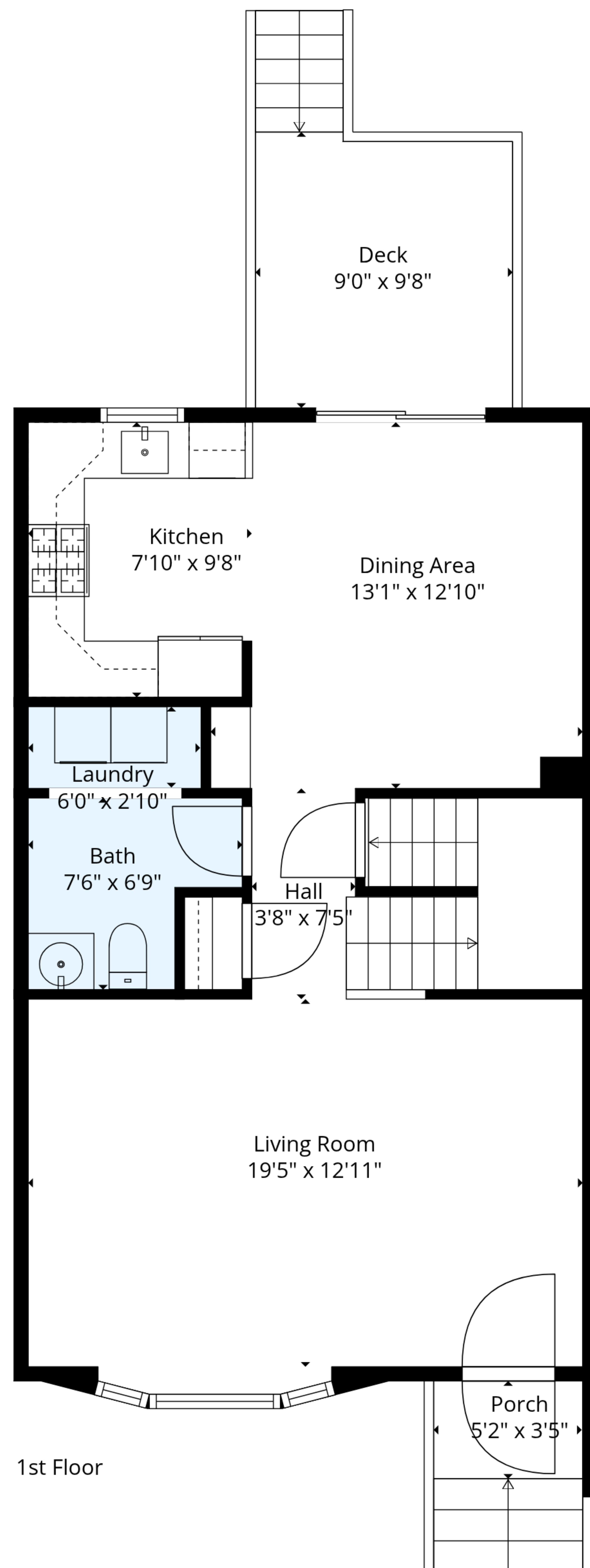
TOTAL: 1739 sq. ft

1st floor: 645 sq. ft, 2nd floor: 663 sq. ft, 3rd floor: 431 sq. ft

EXCLUDED AREAS: PORCH: 35 sq. ft, DECK: 98 sq. ft, BAY WINDOW: 8 sq. ft,

UNDEFINED: 17 sq. ft, LOW CEILING: 74 sq. ft, WALLS: 105 sq. ft





TOTAL: 1739 sq. ft

1st floor: 645 sq. ft, 2nd floor: 663 sq. ft, 3rd floor: 431 sq. ft

EXCLUDED AREAS: PORCH: 35 sq. ft, DECK: 98 sq. ft, BAY WINDOW: 8 sq. ft,

UNDEFINED: 17 sq. ft, LOW CEILING: 74 sq. ft, WALLS: 105 sq. ft

