



Home report


12521 Northwest Jackson Quarry Road, Hillsboro, Washington  
County, Oregon, United States, 97124





Property summary


 **1** Garages


 **4** Bedrooms

 **3** Bathrooms

 **2** Half baths

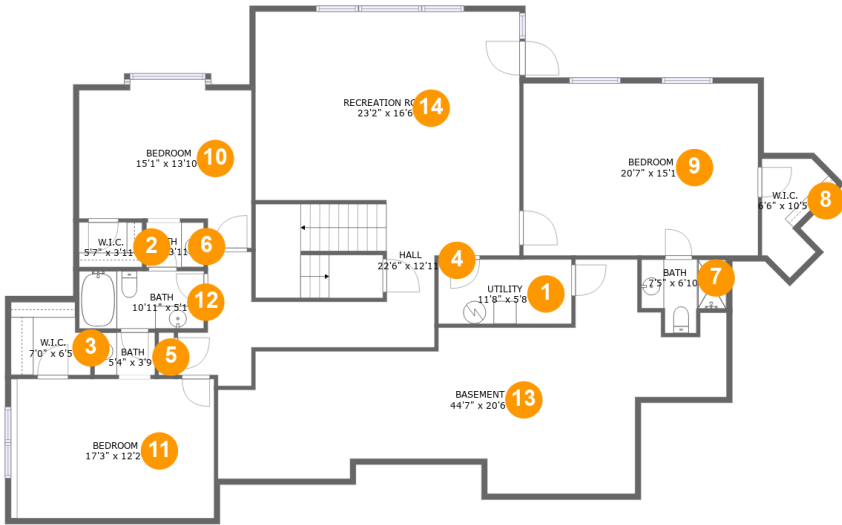
 **2** Floors

 **4,425** Gross living area sqft

 **5,832** Total sqft

Home report

12521 Northwest Jackson Quarry Road, Hillsboro, Washington  
County, Oregon, United States, 97124



Room dimensions

Floor 1

Total sqft: 2410

Living area: 1864

#		Max Dimensions	sqft	Included
1	Utility	11'8" x 5'8"	66 sq. ft	Yes
2	W.I.C.	5'7" x 3'11"	22 sq. ft	Yes
3	W.I.C.	7'0" x 6'5"	41 sq. ft	Yes
4	Hall	22'6" x 12'11"	283 sq. ft	Yes
5	Bath	5'4" x 3'9"	20 sq. ft	Yes
6	Bath	5'1" x 3'11"	20 sq. ft	Yes
7	Bath	7'5" x 6'10"	38 sq. ft	Yes
8	W.I.C.	6'6" x 10'5"	43 sq. ft	Yes
9	Bedroom	20'7" x 15'1"	310 sq. ft	Yes
10	Bedroom	15'1" x 13'10"	186 sq. ft	Yes
11	Bedroom	17'3" x 12'2"	217 sq. ft	Yes

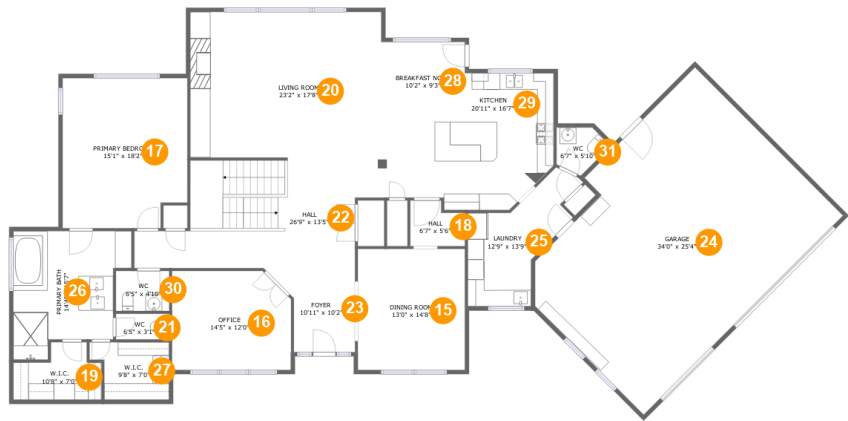
Home report

12521 Northwest Jackson Quarry Road, Hillsboro, Washington  
County, Oregon, United States, 97124

#		Max Dimensions	sqft	Included
12	Bath	10'11" x 5'1"	55 sq. ft	Yes
13	Basement	44'7" x 20'6"	513 sq. ft	No
14	Recreation Room	23'2" x 16'6"	383 sq. ft	Yes

Home report

12521 Northwest Jackson Quarry Road, Hillsboro, Washington  
County, Oregon, United States, 97124



Room dimensions

Floor 2

Total sqft: 3422

Living area: 2561

#		Max Dimensions	sqft	Included
15	Dining Room	13'0" x 14'8"	190 sq. ft	Yes
16	Office	14'5" x 12'0"	167 sq. ft	Yes
17	Primary Bedroom	15'1" x 18'2"	265 sq. ft	Yes
18	Hall	6'7" x 5'6"	32 sq. ft	Yes
19	W.I.C.	10'8" x 7'0"	59 sq. ft	Yes
20	Living Room	23'2" x 17'8"	408 sq. ft	Yes
21	WC	6'5" x 3'1"	20 sq. ft	Yes
22	Hall	26'9" x 13'5"	309 sq. ft	Yes
23	Foyer	10'11" x 10'2"	82 sq. ft	Yes
24	Garage	34'0" x 25'4"	814 sq. ft	No
25	Laundry	12'9" x 13'9"	127 sq. ft	Yes

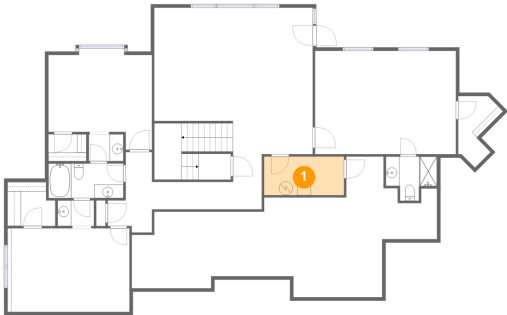
## Home report

**12521 Northwest Jackson Quarry Road, Hillsboro, Washington  
County, Oregon, United States, 97124**

#		Max Dimensions	sqft	Included
26	Primary Bath	14'4" x 15'7"	179 sq. ft	Yes
27	W.I.C.	9'8" x 7'0"	59 sq. ft	Yes
28	Breakfast Nook	10'2" x 9'3"	94 sq. ft	Yes
29	Kitchen	20'11" x 16'7"	265 sq. ft	Yes
30	WC	6'5" x 4'10"	31 sq. ft	Yes
31	WC	6'7" x 5'10"	27 sq. ft	Yes

12521 Northwest Jackson Quarry Road, Hillsboro, Washington  
County, Oregon, United States, 97124

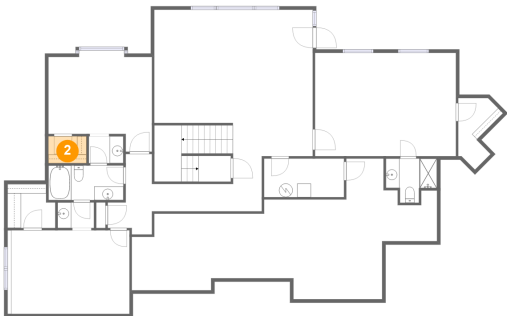
1 Floor 1 - Utility



Max Dimensions: 11'8" x 5'8"  
Calculated Area: 66 sq. ft  
Included: Yes

Heated: Yes  
Finished: Yes  
Enclosed: Yes  
Contiguous: Yes  
Permitted: Yes  
Wet space: No  
Addition: No  
Conversion: No

2 Floor 1 - W.I.C.

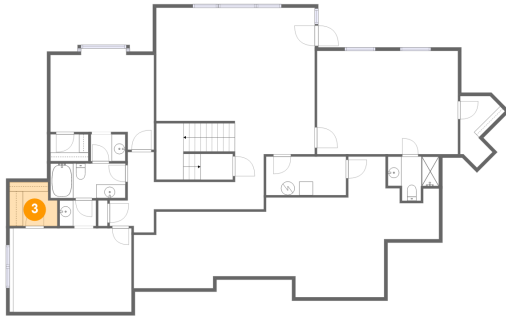


Max Dimensions: 5'7" x 3'11"  
Calculated Area: 22 sq. ft  
Included: Yes

Heated: Yes  
Finished: Yes  
Enclosed: Yes  
Contiguous: Yes  
Permitted: Yes  
Wet space: No  
Addition: No  
Conversion: No

12521 Northwest Jackson Quarry Road, Hillsboro, Washington  
County, Oregon, United States, 97124

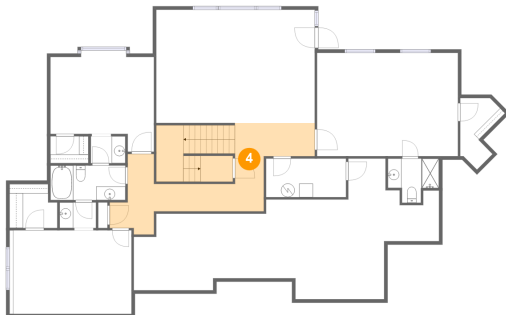
### 3 Floor 1 - W.I.C.



Max Dimensions: 7'0" x 6'5"  
Calculated Area: 41 sq. ft  
Included: Yes

Heated: Yes  
Finished: Yes  
Enclosed: Yes  
Contiguous: Yes  
Permitted: Yes  
Wet space: No  
Addition: No  
Conversion: No

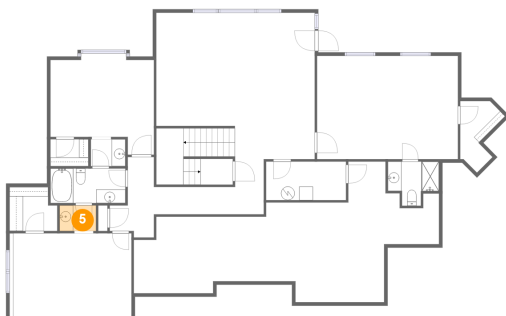
### 4 Floor 1 - Hall



Max Dimensions: 22'6" x 12'11"  
Calculated Area: 283 sq. ft  
Included: Yes

Heated: Yes  
Finished: Yes  
Enclosed: Yes  
Contiguous: Yes  
Permitted: Yes  
Wet space: No  
Addition: No  
Conversion: No

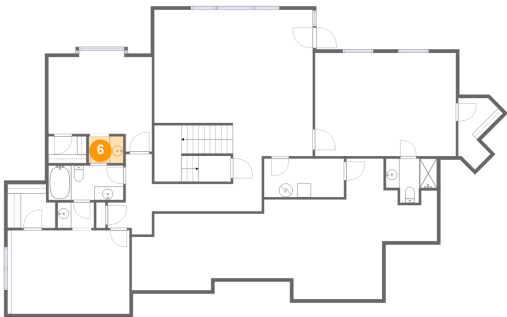
### 5 Floor 1 - Bath



Max Dimensions: 5'4" x 3'9"  
Calculated Area: 20 sq. ft  
Included: Yes

Heated: Yes  
Finished: Yes  
Enclosed: Yes  
Contiguous: Yes  
Permitted: Yes  
Wet space: Yes  
Addition: No  
Conversion: No

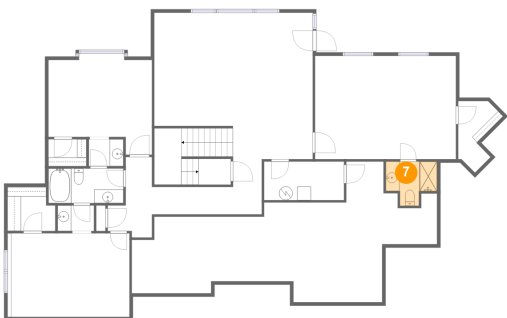
6 Floor 1 - Bath



Max Dimensions: 5'1" x 3'11"  
Calculated Area: 20 sq. ft  
Included: Yes

Heated: Yes  
Finished: Yes  
Enclosed: Yes  
Contiguous: Yes  
Permitted: Yes  
Wet space: Yes  
Addition: No  
Conversion: No

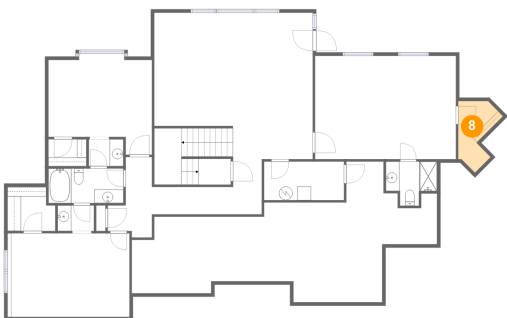
7 Floor 1 - Bath



Max Dimensions: 7'5" x 6'10"  
Calculated Area: 38 sq. ft  
Included: Yes

Heated: Yes  
Finished: Yes  
Enclosed: Yes  
Contiguous: Yes  
Permitted: Yes  
Wet space: Yes  
Addition: No  
Conversion: No

8 Floor 1 - W.I.C.



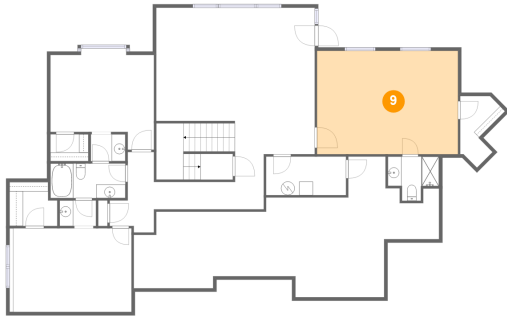
Max Dimensions: 6'6" x 10'5"  
Calculated Area: 43 sq. ft  
Included: Yes

Heated: Yes  
Finished: Yes  
Enclosed: Yes  
Contiguous: Yes  
Permitted: Yes  
Wet space: No  
Addition: No  
Conversion: No



12521 Northwest Jackson Quarry Road, Hillsboro, Washington  
County, Oregon, United States, 97124

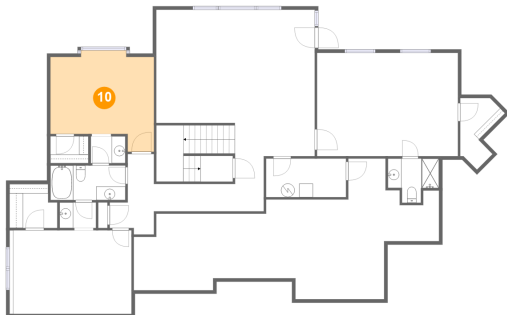
### 9 Floor 1 - Bedroom



Max Dimensions: 20'7" x 15'1"  
Calculated Area: 310 sq. ft  
Included: Yes

Heated: Yes  
Finished: Yes  
Enclosed: Yes  
Contiguous: Yes  
Permitted: Yes  
Wet space: No  
Addition: No  
Conversion: No

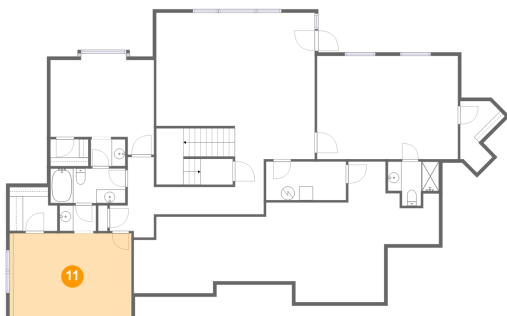
### 10 Floor 1 - Bedroom



Max Dimensions: 15'1" x 13'10"  
Calculated Area: 186 sq. ft  
Included: Yes

Heated: Yes  
Finished: Yes  
Enclosed: Yes  
Contiguous: Yes  
Permitted: Yes  
Wet space: No  
Addition: No  
Conversion: No

### 11 Floor 1 - Bedroom



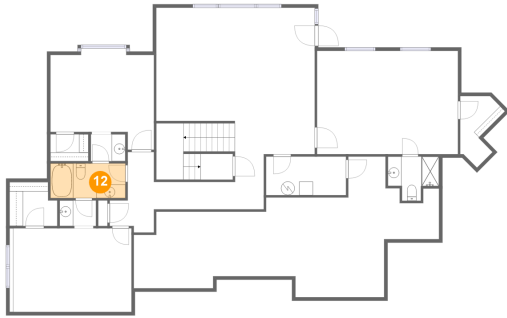
Max Dimensions: 17'3" x 12'2"  
Calculated Area: 217 sq. ft  
Included: Yes

Heated: Yes  
Finished: Yes  
Enclosed: Yes  
Contiguous: Yes  
Permitted: Yes  
Wet space: No  
Addition: No  
Conversion: No

## Home report

12521 Northwest Jackson Quarry Road, Hillsboro, Washington  
County, Oregon, United States, 97124

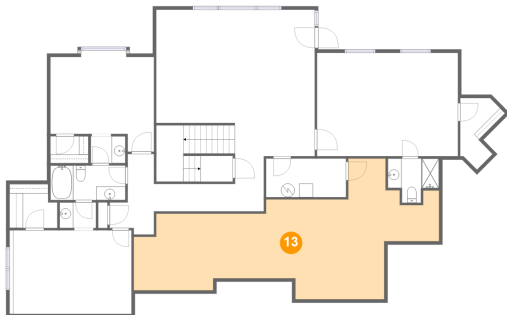
### 12 Floor 1 - Bath



Max Dimensions: 10'11" x 5'1"  
Calculated Area: 55 sq. ft  
Included: Yes

Heated: Yes  
Finished: Yes  
Enclosed: Yes  
Contiguous: Yes  
Permitted: Yes  
Wet space: Yes  
Addition: No  
Conversion: No

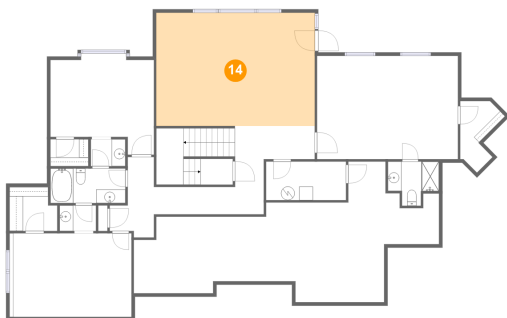
### 13 Floor 1 - Basement



Max Dimensions: 44'7" x 20'6"  
Calculated Area: 513 sq. ft  
Included: No

Heated: Yes  
Finished: No  
Enclosed: Yes  
Contiguous: Yes  
Permitted: Yes  
Wet space: No  
Addition: No  
Conversion: No

### 14 Floor 1 - Recreation Room

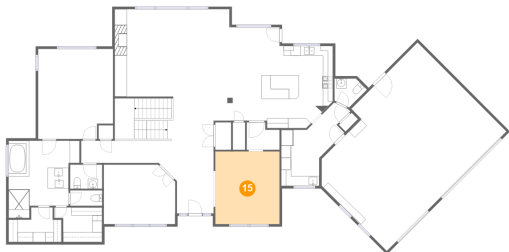


Max Dimensions: 23'2" x 16'6"  
Calculated Area: 383 sq. ft  
Included: Yes

Heated: Yes  
Finished: Yes  
Enclosed: Yes  
Contiguous: Yes  
Permitted: Yes  
Wet space: No  
Addition: No  
Conversion: No

12521 Northwest Jackson Quarry Road, Hillsboro, Washington  
County, Oregon, United States, 97124

15 Floor 2 - Dining Room



Max Dimensions: 13'0" x 14'8"  
Calculated Area: 190 sq. ft  
Included: Yes

Heated: Yes  
Finished: Yes  
Enclosed: Yes  
Contiguous: Yes  
Permitted: Yes  
Wet space: No  
Addition: No  
Conversion: No

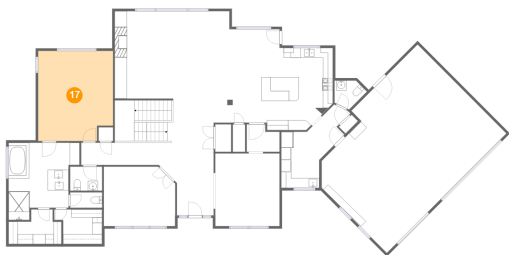
16 Floor 2 - Office



Max Dimensions: 14'5" x 12'0"  
Calculated Area: 167 sq. ft  
Included: Yes

Heated: Yes  
Finished: Yes  
Enclosed: Yes  
Contiguous: Yes  
Permitted: Yes  
Wet space: No  
Addition: No  
Conversion: No

17 Floor 2 - Primary Bedroom

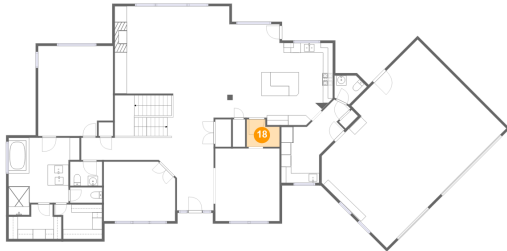


Max Dimensions: 15'1" x 18'2"  
Calculated Area: 265 sq. ft  
Included: Yes

Heated: Yes  
Finished: Yes  
Enclosed: Yes  
Contiguous: Yes  
Permitted: Yes  
Wet space: No  
Addition: No  
Conversion: No

12521 Northwest Jackson Quarry Road, Hillsboro, Washington  
County, Oregon, United States, 97124

## 18 Floor 2 - Hall



Max Dimensions: 6'7" x 5'6"  
Calculated Area: 32 sq. ft  
Included: Yes

Heated: Yes  
Finished: Yes  
Enclosed: Yes  
Contiguous: Yes  
Permitted: Yes  
Wet space: No  
Addition: No  
Conversion: No

## 19 Floor 2 - W.I.C.



Max Dimensions: 10'8" x 7'0"  
Calculated Area: 59 sq. ft  
Included: Yes

Heated: Yes  
Finished: Yes  
Enclosed: Yes  
Contiguous: Yes  
Permitted: Yes  
Wet space: No  
Addition: No  
Conversion: No

## 20 Floor 2 - Living Room

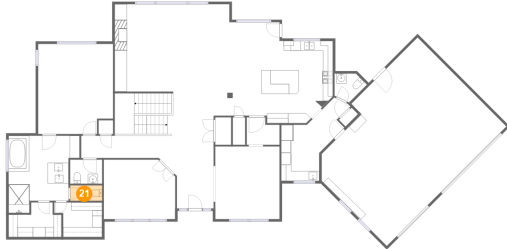


Max Dimensions: 23'2" x 17'8"  
Calculated Area: 408 sq. ft  
Included: Yes

Heated: Yes  
Finished: Yes  
Enclosed: Yes  
Contiguous: Yes  
Permitted: Yes  
Wet space: No  
Addition: No  
Conversion: No

12521 Northwest Jackson Quarry Road, Hillsboro, Washington  
County, Oregon, United States, 97124

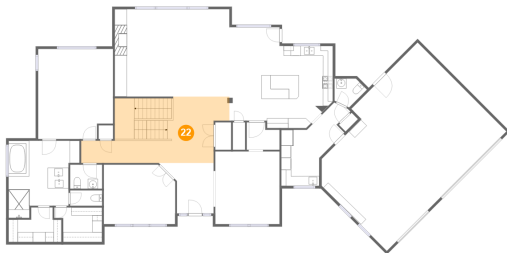
## 21 Floor 2 - WC



Max Dimensions: 6'5" x 3'1"  
Calculated Area: 20 sq. ft  
Included: Yes

Heated: Yes  
Finished: Yes  
Enclosed: Yes  
Contiguous: Yes  
Permitted: Yes  
Wet space: No  
Addition: No  
Conversion: No

## 22 Floor 2 - Hall



Max Dimensions: 26'9" x 13'5"  
Calculated Area: 309 sq. ft  
Included: Yes

Heated: Yes  
Finished: Yes  
Enclosed: Yes  
Contiguous: Yes  
Permitted: Yes  
Wet space: No  
Addition: No  
Conversion: No

## 23 Floor 2 - Foyer



Max Dimensions: 10'11" x 10'2"  
Calculated Area: 82 sq. ft  
Included: Yes

Heated: Yes  
Finished: Yes  
Enclosed: Yes  
Contiguous: Yes  
Permitted: Yes  
Wet space: No  
Addition: No  
Conversion: No

## Home report

12521 Northwest Jackson Quarry Road, Hillsboro, Washington  
County, Oregon, United States, 97124

### 24 Floor 2 - Garage



Max Dimensions: 34'0" x 25'4"  
Calculated Area: 814 sq. ft  
Included: No

Heated: No  
Finished: No  
Enclosed: Yes  
Contiguous: Yes  
Permitted: Yes  
Wet space: No  
Addition: No  
Conversion: No

### 25 Floor 2 - Laundry



Max Dimensions: 12'9" x 13'9"  
Calculated Area: 127 sq. ft  
Included: Yes

Heated: Yes  
Finished: Yes  
Enclosed: Yes  
Contiguous: Yes  
Permitted: Yes  
Wet space: No  
Addition: No  
Conversion: No

### 26 Floor 2 - Primary Bath

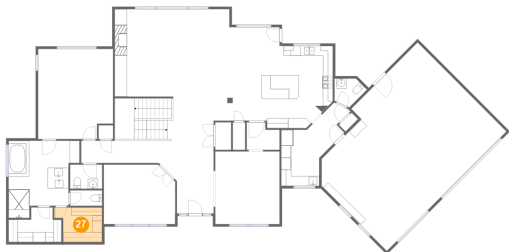


Max Dimensions: 14'4" x 15'7"  
Calculated Area: 179 sq. ft  
Included: Yes

Heated: Yes  
Finished: Yes  
Enclosed: Yes  
Contiguous: Yes  
Permitted: Yes  
Wet space: Yes  
Addition: No  
Conversion: No

12521 Northwest Jackson Quarry Road, Hillsboro, Washington  
County, Oregon, United States, 97124

27 Floor 2 - W.I.C.



Max Dimensions: 9'8" x 7'0"  
Calculated Area: 59 sq. ft  
Included: Yes

Heated: Yes  
Finished: Yes  
Enclosed: Yes  
Contiguous: Yes  
Permitted: Yes  
Wet space: No  
Addition: No  
Conversion: No

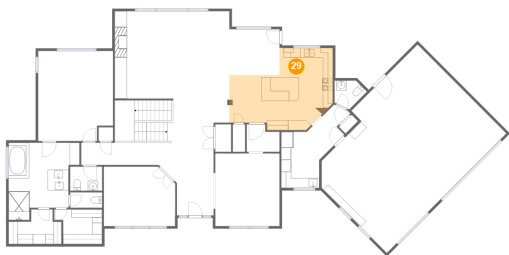
28 Floor 2 - Breakfast Nook



Max Dimensions: 10'2" x 9'3"  
Calculated Area: 94 sq. ft  
Included: Yes

Heated: Yes  
Finished: Yes  
Enclosed: Yes  
Contiguous: Yes  
Permitted: Yes  
Wet space: No  
Addition: No  
Conversion: No

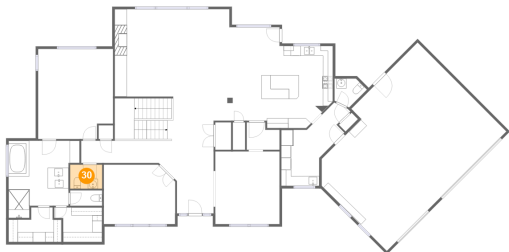
29 Floor 2 - Kitchen



Max Dimensions: 20'11" x 16'7"  
Calculated Area: 265 sq. ft  
Included: Yes

Heated: Yes  
Finished: Yes  
Enclosed: Yes  
Contiguous: Yes  
Permitted: Yes  
Wet space: No  
Addition: No  
Conversion: No

30 Floor 2 - WC



Max Dimensions: 6'5" x 4'10"  
Calculated Area: 31 sq. ft  
Included: Yes

Heated: Yes  
Finished: Yes  
Enclosed: Yes  
Contiguous: Yes  
Permitted: Yes  
Wet space: Yes  
Addition: No  
Conversion: No

31 Floor 2 - WC



Max Dimensions: 6'7" x 5'10"  
Calculated Area: 27 sq. ft  
Included: Yes

Heated: Yes  
Finished: Yes  
Enclosed: Yes  
Contiguous: Yes  
Permitted: Yes  
Wet space: Yes  
Addition: No  
Conversion: No