

Home report

371 Nyle Ridge Road, Wirtz, Franklin County, Virginia, United States, 24184



Total Area: 4585 sq. ft

Floor 1: 1776 sq. ft, Floor 2: 2200 sq. ft, Floor 3: 609 sq. ft

Excluded: Storage 210 sq. ft, Room Electrical 158 sq. ft, Outdoor Patio Covered 332 sq. ft, Garage 797 sq. ft, Outdoor Porch 96 sq. ft, Outdoor Deck Covered 294 sq. ft, Attic 1133 sq. ft

Property summary

**3** Floors

**4** Bedrooms

**4** Bathrooms

Home report

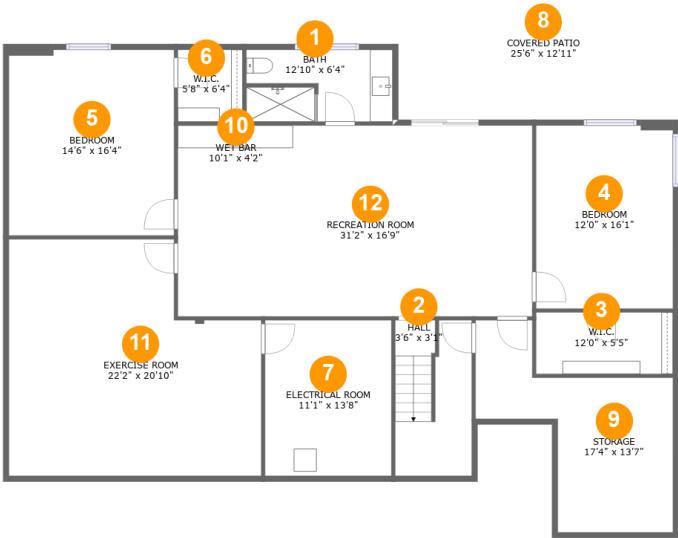
371 Nyle Ridge Road, Wirtz, Franklin County, Virginia, United States, 24184

 **1**
Half baths

 **1**
Garages

Home report

371 Nyle Ridge Road, Wirtz, Franklin County, Virginia, United States, 24184



Room dimensions

Floor 1 Total:1776sqft Excluded: 700sqft

#		Max Dimensions	sqft	Included
1	Bath	12'10" x 6'4"	79 sq. ft	Yes
2	Hall	3'6" x 3'1"	89 sq. ft	Yes
3	W.I.C.	12'0" x 5'5"	65 sq. ft	Yes
4	Bedroom	12'0" x 16'1"	193 sq. ft	Yes
5	Bedroom	14'6" x 16'4"	235 sq. ft	Yes
6	W.I.C.	5'8" x 6'4"	36 sq. ft	Yes
7	Electrical Room	11'1" x 13'8"	152 sq. ft	No
8	Covered Patio	25'6" x 12'11"	332 sq. ft	No
9	Storage	17'4" x 13'7"	189 sq. ft	No
10	Wet Bar	10'1" x 4'2"	42 sq. ft	Yes
11	Exercise Room	22'2" x 20'10"	407 sq. ft	Yes

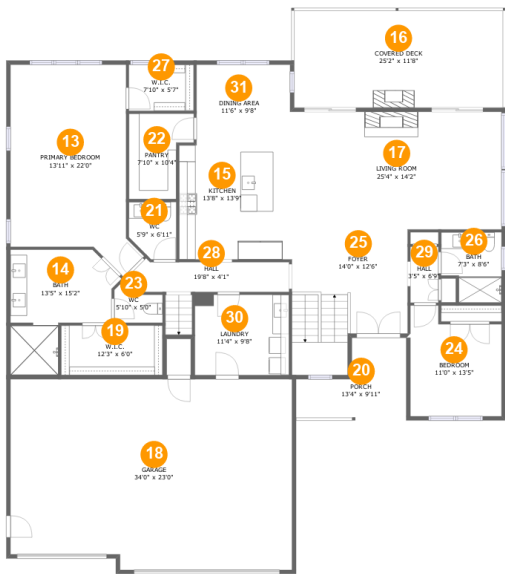
Home report

371 Nyle Ridge Road, Wirtz, Franklin County, Virginia, United States, 24184

#		Max Dimensions	sqft	Included
12	Recreation Room	31'2" x 16'9"	481 sq. ft	Yes

Home report

371 Nyle Ridge Road, Wirtz, Franklin County, Virginia, United States, 24184



Room dimensions

Floor 2

Total:2200sqft

Excluded: 1187sqft

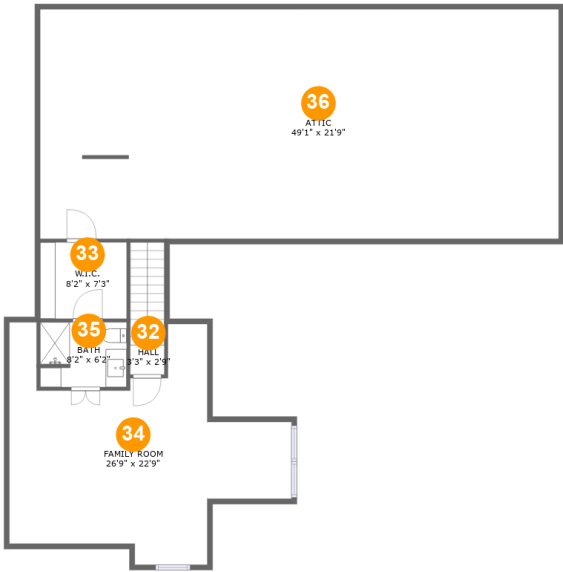
#		Max Dimensions	sqft	Included
13	Primary Bedroom	13'11" x 22'0"	319 sq. ft	Yes
14	Bath	13'5" x 15'2"	142 sq. ft	Yes
15	Kitchen	13'8" x 13'9"	188 sq. ft	Yes
16	Covered Deck	25'2" x 11'8"	294 sq. ft	No
17	Living Room	25'4" x 14'2"	359 sq. ft	Yes
18	Garage	34'0" x 23'0"	757 sq. ft	No
19	W.I.C.	12'3" x 6'0"	73 sq. ft	Yes
20	Porch	13'4" x 9'11"	96 sq. ft	No
21	WC	5'9" x 6'11"	36 sq. ft	Yes
22	Pantry	7'10" x 10'4"	67 sq. ft	Yes
23	WC	5'10" x 5'0"	22 sq. ft	Yes

Home report

371 Nyle Ridge Road, Wirtz, Franklin County, Virginia, United States, 24184

#		Max Dimensions	sqft	Included
24	Bedroom	11'0" x 13'5"	130 sq. ft	Yes
25	Foyer	14'0" x 12'6"	209 sq. ft	Yes
26	Bath	7'3" x 8'6"	55 sq. ft	Yes
27	W.I.C.	7'10" x 5'7"	44 sq. ft	Yes
28	Hall	19'8" x 4'1"	68 sq. ft	Yes
29	Hall	3'5" x 6'9"	23 sq. ft	Yes
30	Laundry	11'4" x 9'8"	110 sq. ft	Yes
31	Dining Area	11'6" x 9'8"	111 sq. ft	Yes

371 Nyle Ridge Road, Wirtz, Franklin County, Virginia, United States, 24184



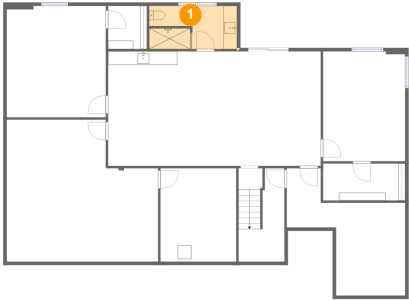
Room dimensions

Floor 3 Total:609sqft Excluded: 1133sqft

#		Max Dimensions	sqft	Included
32	Hall	3'3" x 2'9"	41 sq. ft	Yes
33	W.I.C.	8'2" x 7'3"	59 sq. ft	Yes
34	Family Room	26'9" x 22'9"	388 sq. ft	Yes
35	Bath	8'2" x 6'2"	49 sq. ft	Yes
36	Attic	49'1" x 21'9"	1067 sq. ft	No

371 Nyle Ridge Road, Wirtz, Franklin County, Virginia, United States, 24184

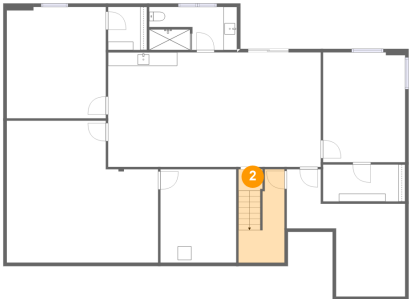
1 Floor 1 - Bath



Max Dimensions: 12'10" x 6'4"
Calculated Area: 79 sq. ft
Included: Yes

Heated: Yes
Finished: Yes
Enclosed: Yes
Contiguous: Yes
Permitted: Yes
Wet space: Yes
Addition: No
Conversion: No

2 Floor 1 - Hall



Max Dimensions: 3'6" x 3'1"
Calculated Area: 89 sq. ft
Included: Yes

Heated: Yes
Finished: Yes
Enclosed: Yes
Contiguous: Yes
Permitted: Yes
Wet space: No
Addition: No
Conversion: No

371 Nyle Ridge Road, Wirtz, Franklin County, Virginia, United States, 24184

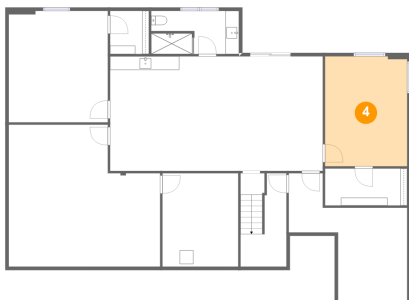
3 Floor 1 - W.I.C.



Max Dimensions: 12'0" x 5'5"
Calculated Area: 65 sq. ft
Included: Yes

Heated: Yes
Finished: Yes
Enclosed: Yes
Contiguous: Yes
Permitted: Yes
Wet space: No
Addition: No
Conversion: No

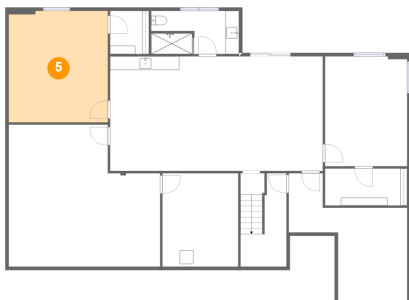
4 Floor 1 - Bedroom



Max Dimensions: 12'0" x 16'1"
Calculated Area: 193 sq. ft
Included: Yes

Heated: Yes
Finished: Yes
Enclosed: Yes
Contiguous: Yes
Permitted: Yes
Wet space: No
Addition: No
Conversion: No

5 Floor 1 - Bedroom

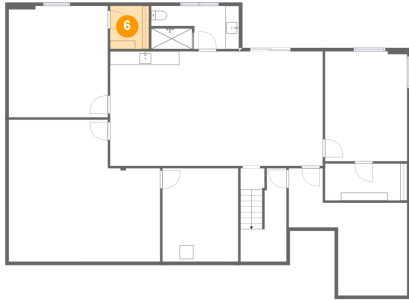


Max Dimensions: 14'6" x 16'4"
Calculated Area: 235 sq. ft
Included: Yes

Heated: Yes
Finished: Yes
Enclosed: Yes
Contiguous: Yes
Permitted: Yes
Wet space: No
Addition: No
Conversion: No

371 Nyle Ridge Road, Wirtz, Franklin County, Virginia, United States, 24184

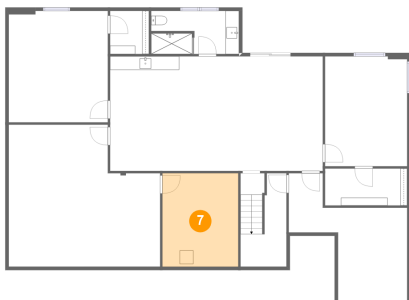
6 Floor 1 - W.I.C.



Max Dimensions: 5'8" x 6'4"
Calculated Area: 36 sq. ft
Included: Yes

Heated: Yes
Finished: Yes
Enclosed: Yes
Contiguous: Yes
Permitted: Yes
Wet space: No
Addition: No
Conversion: No

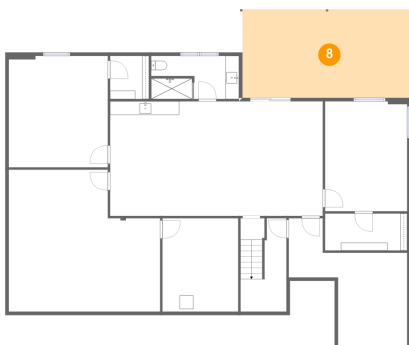
7 Floor 1 - Electrical Room



Max Dimensions: 11'1" x 13'8"
Calculated Area: 152 sq. ft
Included: No

Heated: No
Finished: No
Enclosed: Yes
Contiguous: Yes
Permitted: Yes
Wet space: No
Addition: No
Conversion: No

8 Floor 1 - Covered Patio



Max Dimensions: 25'6" x 12'11"
Calculated Area: 332 sq. ft
Included: No

Heated: No
Finished: Yes
Enclosed: No
Contiguous: Yes
Permitted: Yes
Wet space: No
Addition: No
Conversion: No

371 Nyle Ridge Road, Wirtz, Franklin County, Virginia, United States, 24184

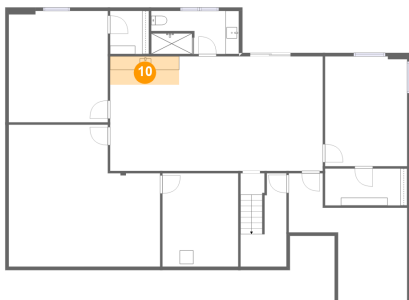
9 Floor 1 - Storage



Max Dimensions: 17'4" x 13'7"
Calculated Area: 189 sq. ft
Included: No

Heated: No
Finished: No
Enclosed: No
Contiguous: Yes
Permitted: Yes
Wet space: No
Addition: No
Conversion: No

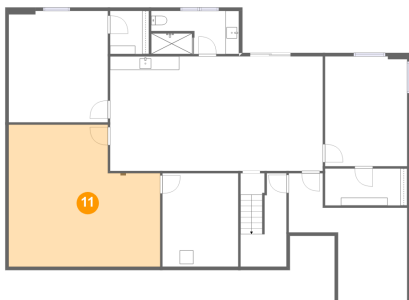
10 Floor 1 - Wet Bar



Max Dimensions: 10'1" x 4'2"
Calculated Area: 42 sq. ft
Included: Yes

Heated: Yes
Finished: Yes
Enclosed: Yes
Contiguous: Yes
Permitted: Yes
Wet space: No
Addition: No
Conversion: No

11 Floor 1 - Exercise Room

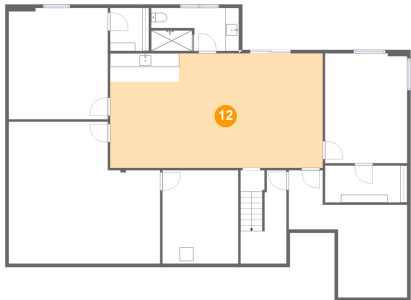


Max Dimensions: 22'2" x 20'10"
Calculated Area: 407 sq. ft
Included: Yes

Heated: Yes
Finished: Yes
Enclosed: Yes
Contiguous: Yes
Permitted: Yes
Wet space: No
Addition: No
Conversion: No

371 Nyle Ridge Road, Wirtz, Franklin County, Virginia, United States, 24184

12 Floor 1 - Recreation Room



Max Dimensions: 31'2" x 16'9"
Calculated Area: 481 sq. ft
Included: Yes

Heated: Yes
Finished: Yes
Enclosed: Yes
Contiguous: Yes
Permitted: Yes
Wet space: No
Addition: No
Conversion: No

13 Floor 2 - Primary Bedroom



Max Dimensions: 13'11" x 22'0"
Calculated Area: 319 sq. ft
Included: Yes

Heated: Yes
Finished: Yes
Enclosed: Yes
Contiguous: Yes
Permitted: Yes
Wet space: No
Addition: No
Conversion: No

14 Floor 2 - Bath



Max Dimensions: 13'5" x 15'2"
Calculated Area: 142 sq. ft
Included: Yes

Heated: Yes
Finished: Yes
Enclosed: Yes
Contiguous: Yes
Permitted: Yes
Wet space: Yes
Addition: No
Conversion: No

371 Nyle Ridge Road, Wirtz, Franklin County, Virginia, United States, 24184

15 Floor 2 - Kitchen



Max Dimensions: 13'8" x 13'9"
Calculated Area: 188 sq. ft
Included: Yes

Heated: Yes
Finished: Yes
Enclosed: Yes
Contiguous: Yes
Permitted: Yes
Wet space: No
Addition: No
Conversion: No

16 Floor 2 - Covered Deck



Max Dimensions: 25'2" x 11'8"
Calculated Area: 294 sq. ft
Included: No

Heated: No
Finished: Yes
Enclosed: No
Contiguous: Yes
Permitted: Yes
Wet space: No
Addition: No
Conversion: No

17 Floor 2 - Living Room



Max Dimensions: 25'4" x 14'2"
Calculated Area: 359 sq. ft
Included: Yes

Heated: Yes
Finished: Yes
Enclosed: Yes
Contiguous: Yes
Permitted: Yes
Wet space: No
Addition: No
Conversion: No

371 Nyle Ridge Road, Wirtz, Franklin County, Virginia, United States, 24184

18 Floor 2 - Garage



Max Dimensions: 34'0" x 23'0"
Calculated Area: 757 sq. ft
Included: No

Heated: No
Finished: No
Enclosed: Yes
Contiguous: Yes
Permitted: Yes
Wet space: No
Addition: No
Conversion: No

19 Floor 2 - W.I.C.



Max Dimensions: 12'3" x 6'0"
Calculated Area: 73 sq. ft
Included: Yes

Heated: Yes
Finished: Yes
Enclosed: Yes
Contiguous: Yes
Permitted: Yes
Wet space: No
Addition: No
Conversion: No

20 Floor 2 - Porch



Max Dimensions: 13'4" x 9'11"
Calculated Area: 96 sq. ft
Included: No

Heated: No
Finished: Yes
Enclosed: No
Contiguous: Yes
Permitted: Yes
Wet space: No
Addition: No
Conversion: No

371 Nyle Ridge Road, Wirtz, Franklin County, Virginia, United States, 24184

21 Floor 2 - WC



Max Dimensions: 5'9" x 6'11"
Calculated Area: 36 sq. ft
Included: Yes

Heated: Yes
Finished: Yes
Enclosed: Yes
Contiguous: Yes
Permitted: Yes
Wet space: Yes
Addition: No
Conversion: No

22 Floor 2 - Pantry



Max Dimensions: 7'10" x 10'4"
Calculated Area: 67 sq. ft
Included: Yes

Heated: Yes
Finished: Yes
Enclosed: Yes
Contiguous: Yes
Permitted: Yes
Wet space: No
Addition: No
Conversion: No

23 Floor 2 - WC



Max Dimensions: 5'10" x 5'0"
Calculated Area: 22 sq. ft
Included: Yes

Heated: Yes
Finished: Yes
Enclosed: Yes
Contiguous: Yes
Permitted: Yes
Wet space: Yes
Addition: No
Conversion: No

371 Nyle Ridge Road, Wirtz, Franklin County, Virginia, United States, 24184

24 Floor 2 - Bedroom



Max Dimensions: 11'0" x 13'5"
Calculated Area: 130 sq. ft
Included: Yes

Heated: Yes
Finished: Yes
Enclosed: Yes
Contiguous: Yes
Permitted: Yes
Wet space: No
Addition: No
Conversion: No

25 Floor 2 - Foyer



Max Dimensions: 14'0" x 12'6"
Calculated Area: 209 sq. ft
Included: Yes

Heated: Yes
Finished: Yes
Enclosed: Yes
Contiguous: Yes
Permitted: Yes
Wet space: No
Addition: No
Conversion: No

26 Floor 2 - Bath



Max Dimensions: 7'3" x 8'6"
Calculated Area: 55 sq. ft
Included: Yes

Heated: Yes
Finished: Yes
Enclosed: Yes
Contiguous: Yes
Permitted: Yes
Wet space: Yes
Addition: No
Conversion: No

371 Nyle Ridge Road, Wirtz, Franklin County, Virginia, United States, 24184

27 Floor 2 - W.I.C.



Max Dimensions: 7'10" x 5'7"
Calculated Area: 44 sq. ft
Included: Yes

Heated: Yes
Finished: Yes
Enclosed: Yes
Contiguous: Yes
Permitted: Yes
Wet space: No
Addition: No
Conversion: No

28 Floor 2 - Hall



Max Dimensions: 19'8" x 4'1"
Calculated Area: 68 sq. ft
Included: Yes

Heated: Yes
Finished: Yes
Enclosed: Yes
Contiguous: Yes
Permitted: Yes
Wet space: No
Addition: No
Conversion: No

29 Floor 2 - Hall



Max Dimensions: 3'5" x 6'9"
Calculated Area: 23 sq. ft
Included: Yes

Heated: Yes
Finished: Yes
Enclosed: Yes
Contiguous: Yes
Permitted: Yes
Wet space: No
Addition: No
Conversion: No

371 Nyle Ridge Road, Wirtz, Franklin County, Virginia, United States, 24184

30 Floor 2 - Laundry



Max Dimensions: 11'4" x 9'8"
Calculated Area: 110 sq. ft
Included: Yes

Heated: Yes
Finished: Yes
Enclosed: Yes
Contiguous: Yes
Permitted: Yes
Wet space: No
Addition: No
Conversion: No

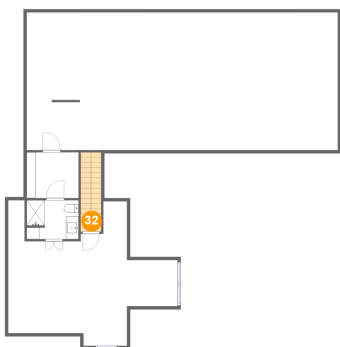
31 Floor 2 - Dining Area



Max Dimensions: 11'6" x 9'8"
Calculated Area: 111 sq. ft
Included: Yes

Heated: Yes
Finished: Yes
Enclosed: Yes
Contiguous: Yes
Permitted: Yes
Wet space: No
Addition: No
Conversion: No

32 Floor 3 - Hall

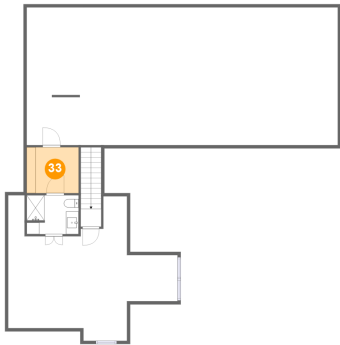


Max Dimensions: 3'3" x 2'9"
Calculated Area: 41 sq. ft
Included: Yes

Heated: Yes
Finished: Yes
Enclosed: Yes
Contiguous: Yes
Permitted: Yes
Wet space: No
Addition: No
Conversion: No

371 Nyle Ridge Road, Wirtz, Franklin County, Virginia, United States, 24184

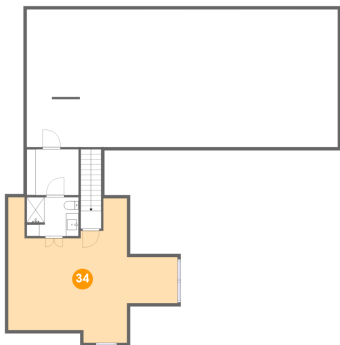
33 Floor 3 - W.I.C.



Max Dimensions: 8'2" x 7'3"
Calculated Area: 59 sq. ft
Included: Yes

Heated: Yes
Finished: Yes
Enclosed: Yes
Contiguous: Yes
Permitted: Yes
Wet space: No
Addition: No
Conversion: No

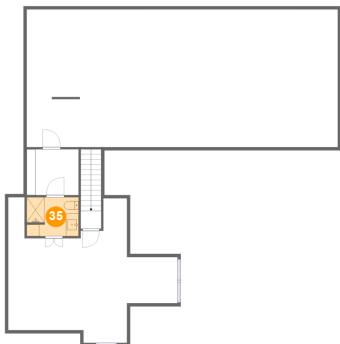
34 Floor 3 - Family Room



Max Dimensions: 26'9" x 22'9"
Calculated Area: 388 sq. ft
Included: Yes

Heated: Yes
Finished: Yes
Enclosed: Yes
Contiguous: Yes
Permitted: Yes
Wet space: No
Addition: No
Conversion: No

35 Floor 3 - Bath

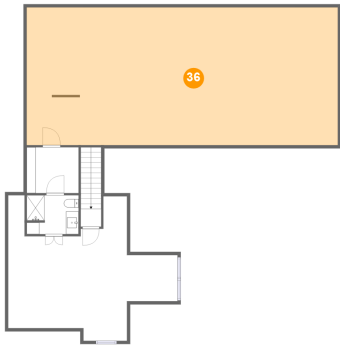


Max Dimensions: 8'2" x 6'2"
Calculated Area: 49 sq. ft
Included: Yes

Heated: Yes
Finished: Yes
Enclosed: Yes
Contiguous: Yes
Permitted: Yes
Wet space: Yes
Addition: No
Conversion: No

371 Nyle Ridge Road, Wirtz, Franklin County, Virginia, United States, 24184

36 Floor 3 - Attic



Max Dimensions: 49'1" x 21'9"
Calculated Area: 1067 sq. ft
Included: No

Heated: No
Finished: No
Enclosed: Yes
Contiguous: Yes
Permitted: Yes
Wet space: No
Addition: No
Conversion: No