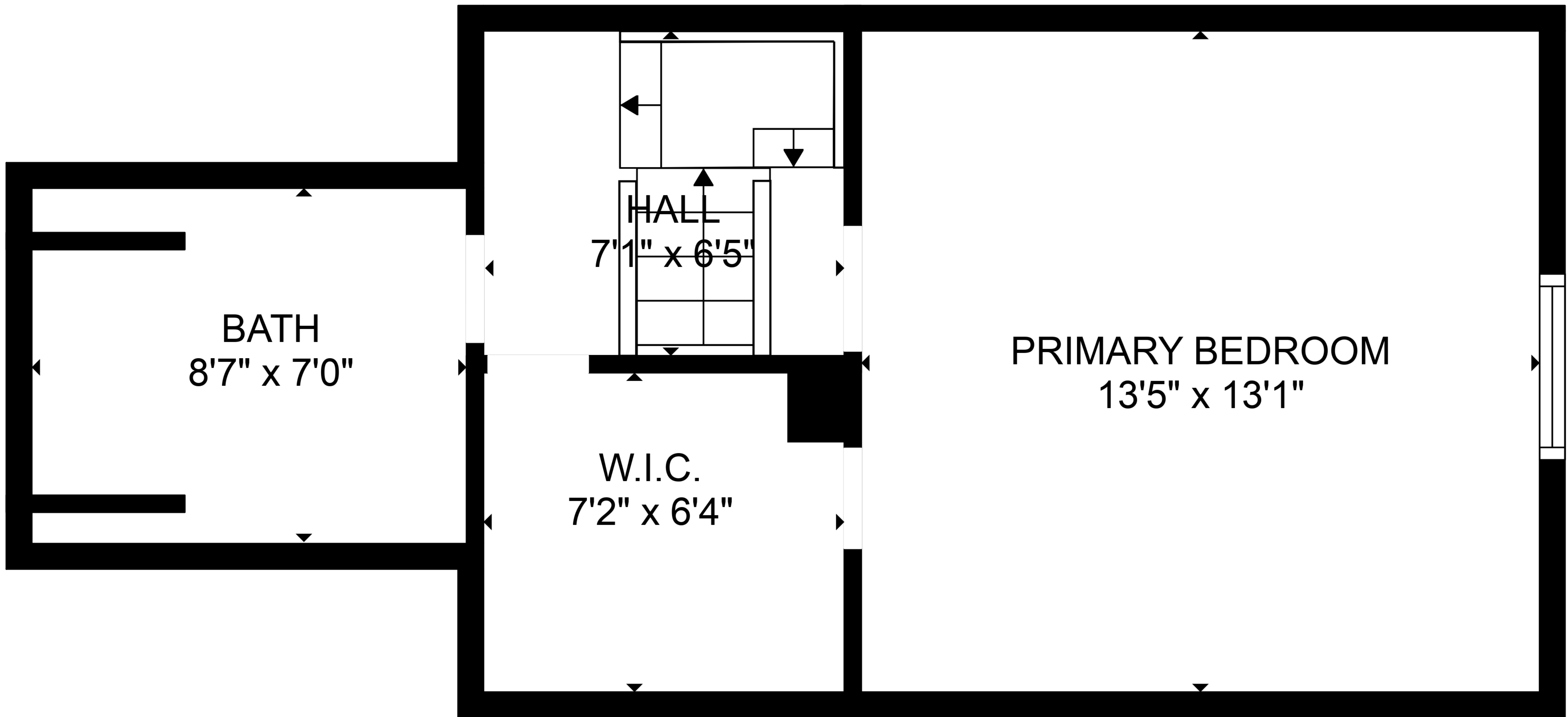


TOTAL: 1065 sq. ft

FLOOR 1: 799 sq. ft, FLOOR 2: 266 sq. ft
EXCLUDED AREAS: LOW CEILING: 71 sq. ft

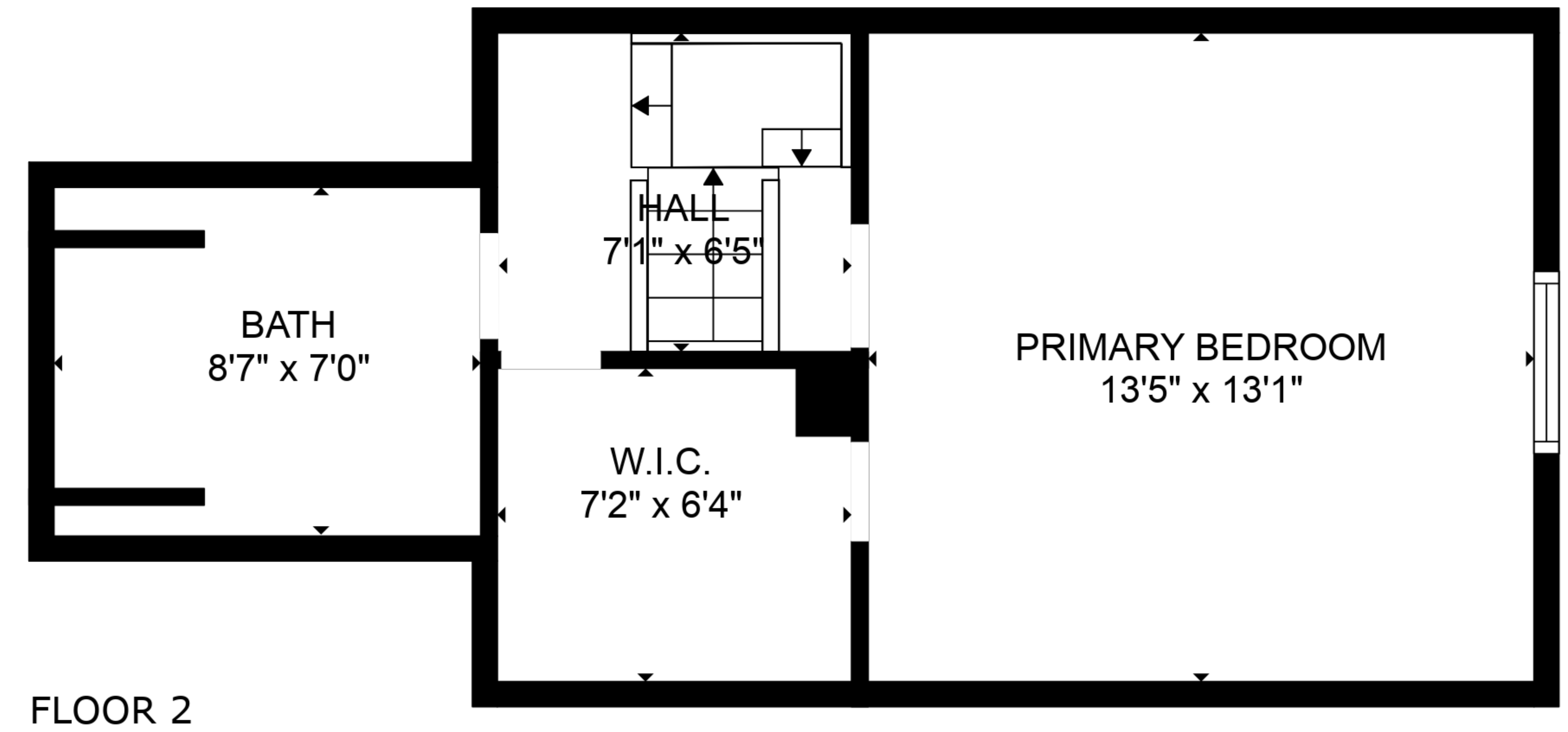
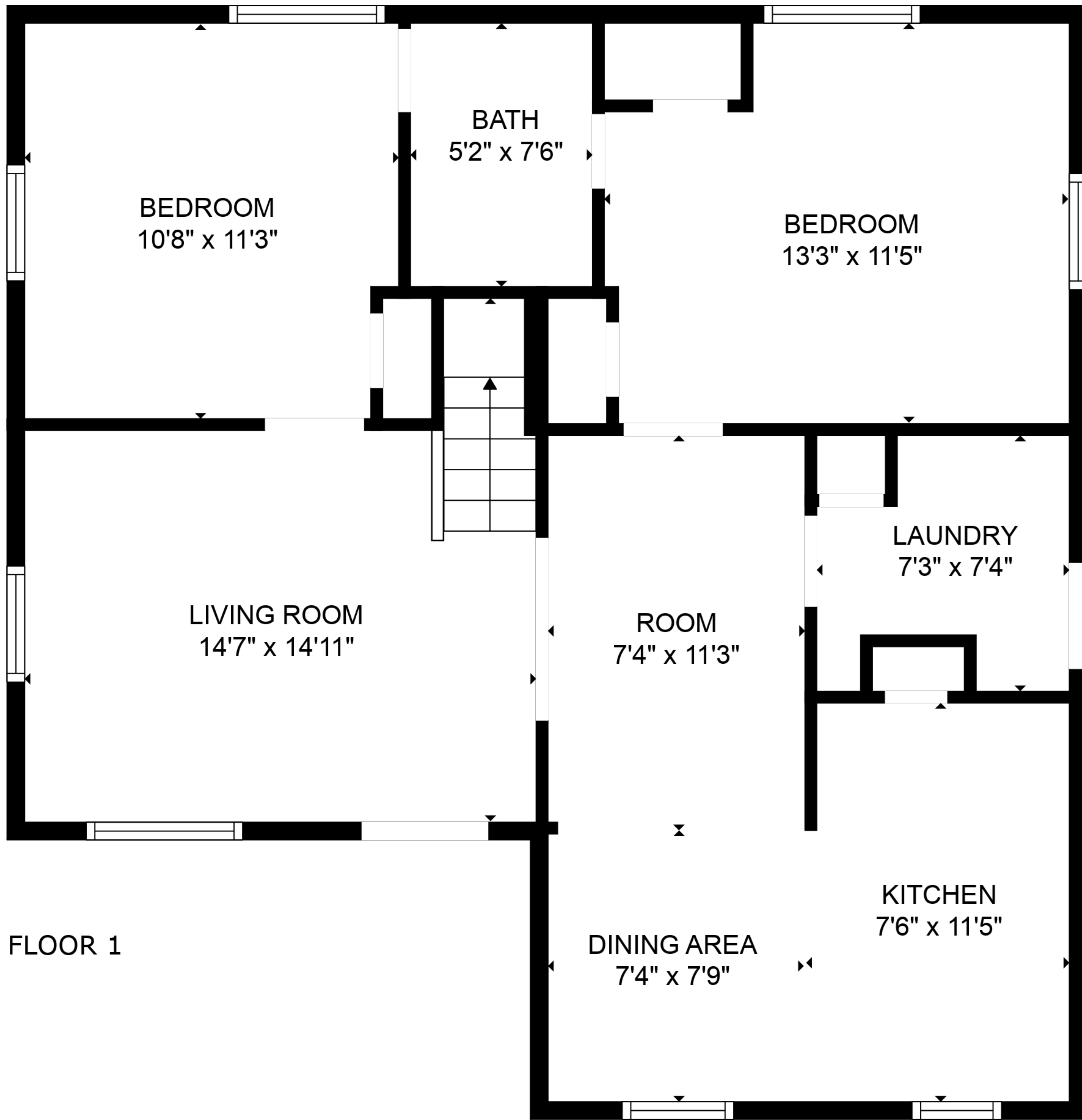
SIZES AND DIMENSIONS ARE APPROXIMATE. ACTUAL MAY VARY.



TOTAL: 1065 sq. ft

FLOOR 1: 799 sq. ft, FLOOR 2: 266 sq. ft
EXCLUDED AREAS: LOW CEILING: 71 sq. ft

SIZES AND DIMENSIONS ARE APPROXIMATE. ACTUAL MAY VARY.



TOTAL: 1065 sq. ft

FLOOR 1: 799 sq. ft, FLOOR 2: 266 sq. ft
 EXCLUDED AREAS: LOW CEILING: 71 sq. ft

SIZES AND DIMENSIONS ARE APPROXIMATE. ACTUAL MAY VARY.