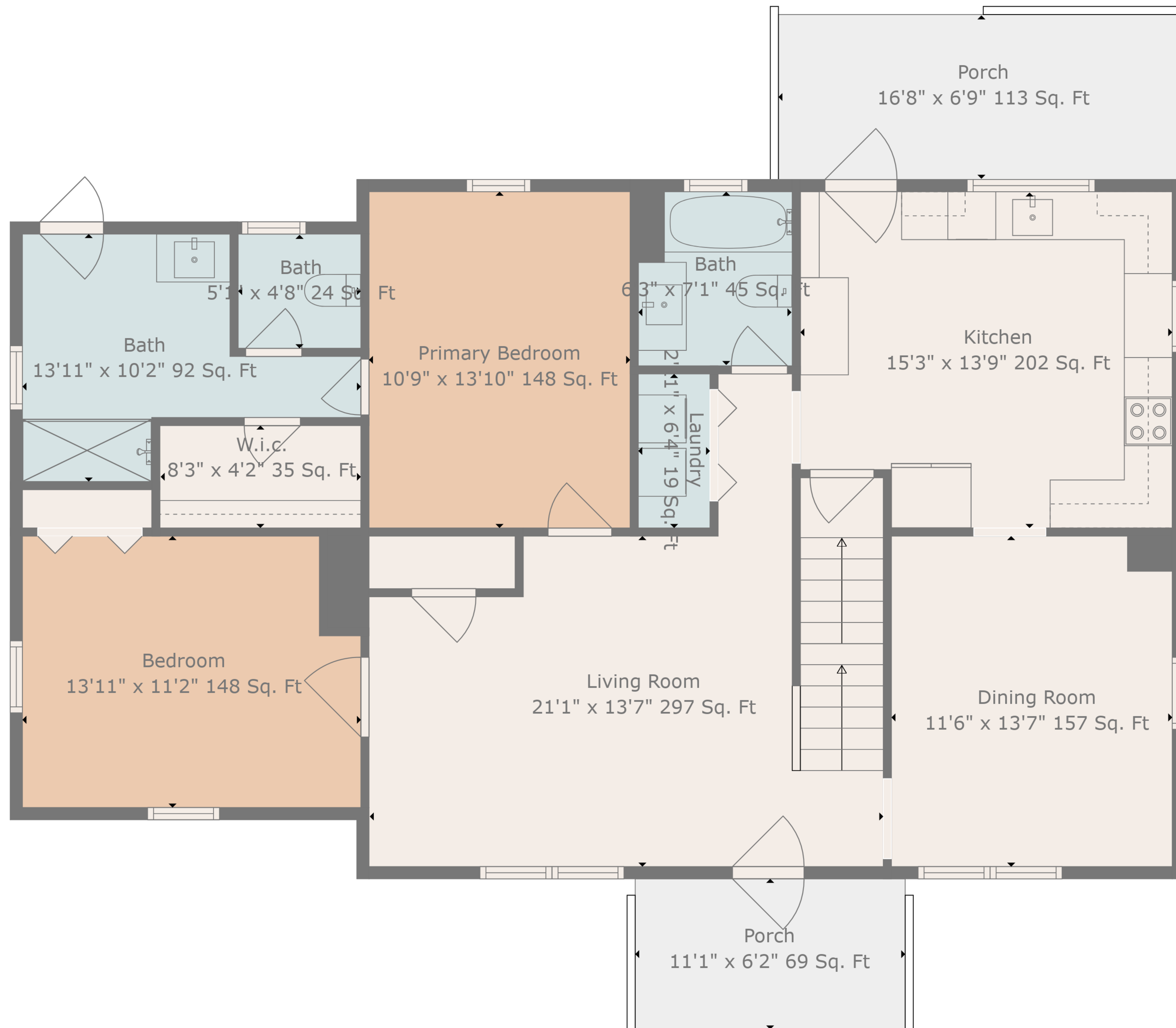


Basement
33'0" x 27'9" 915 Sq. Ft

TOTAL: 1779 sq. ft
BELOW GROUND: 0 sq. ft, FLOOR 2: 1251 sq. ft, FLOOR 3: 528 sq. ft
EXCLUDED AREAS: BASEMENT: 915 sq. ft, PORCH: 182 sq. ft, LOW CEILING: 65 sq. ft

Sizes And Dimensions Are Approximate, Actual May Vary.



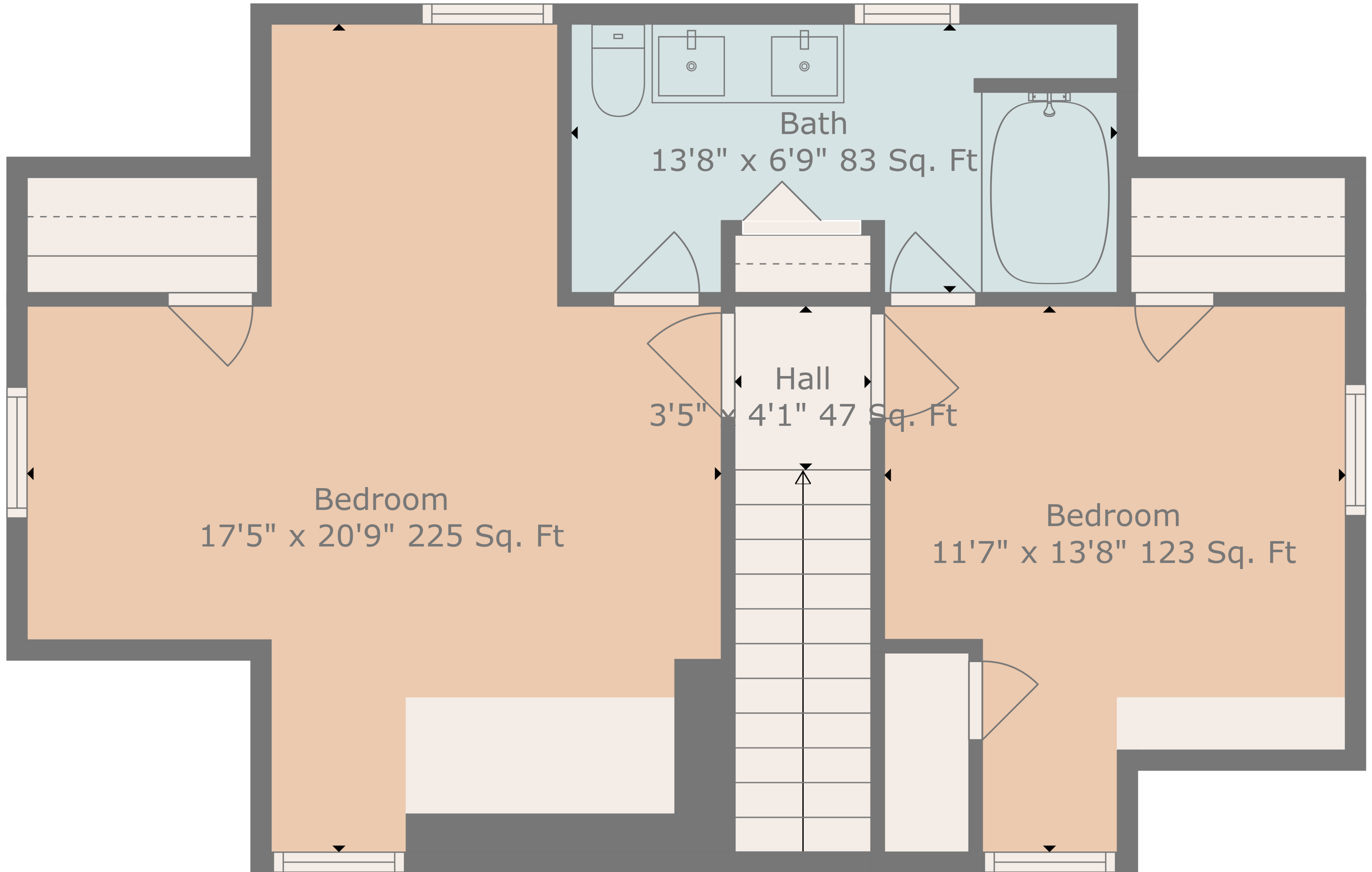


TOTAL: 1779 sq. ft

BELOW GROUND: 0 sq. ft, FLOOR 2: 1251 sq. ft, FLOOR 3: 528 sq. ft
 EXCLUDED AREAS: BASEMENT: 915 sq. ft, PORCH: 182 sq. ft, LOW CEILING: 65 sq. ft

Sizes And Dimensions Are Approximate, Actual May Vary.





Bedroom
17'5" x 20'9" 225 Sq. Ft

Bath
13'8" x 6'9" 83 Sq. Ft

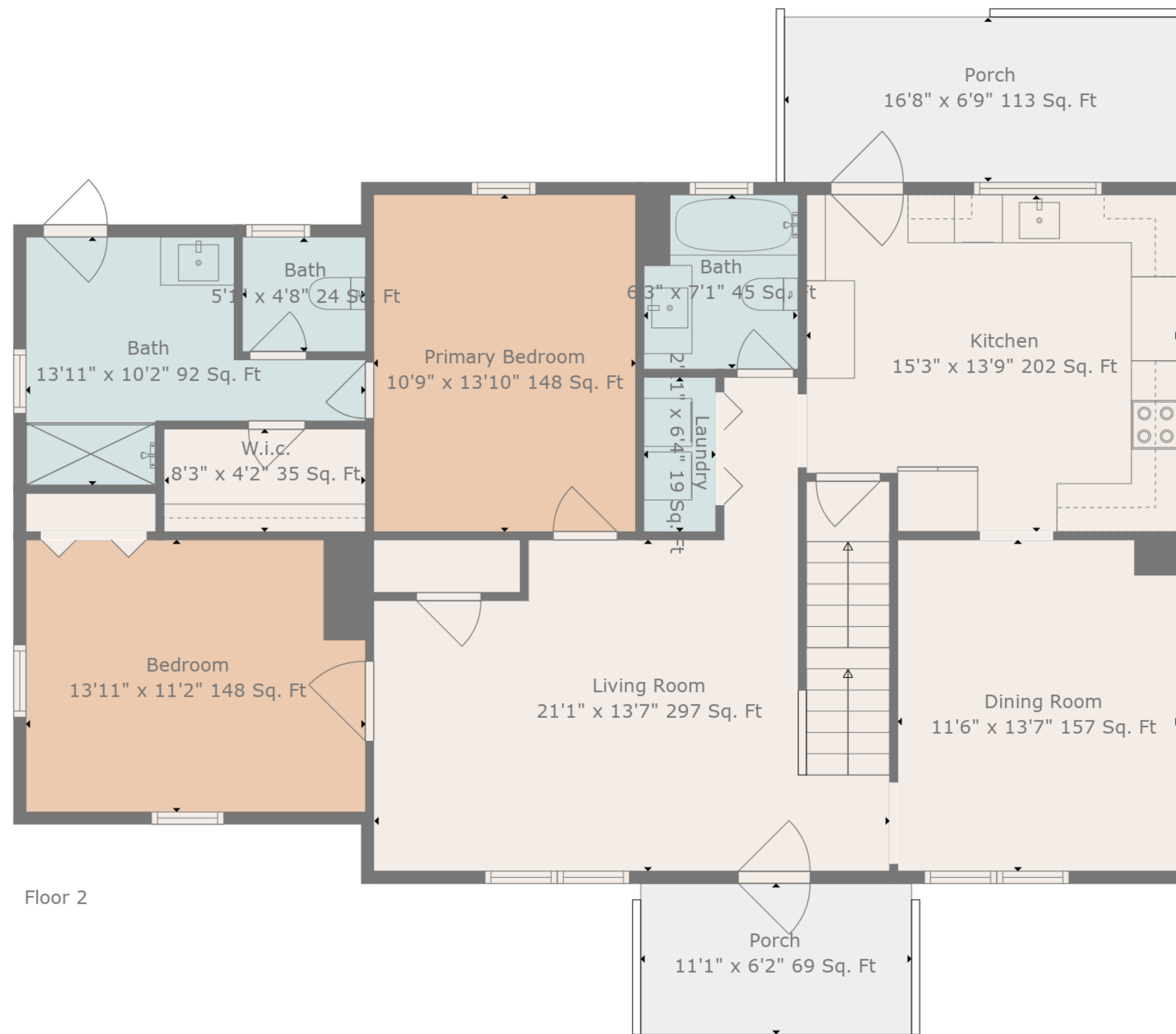
Hall
3'5" x 4'1" 47 Sq. Ft

Bedroom
11'7" x 13'8" 123 Sq. Ft

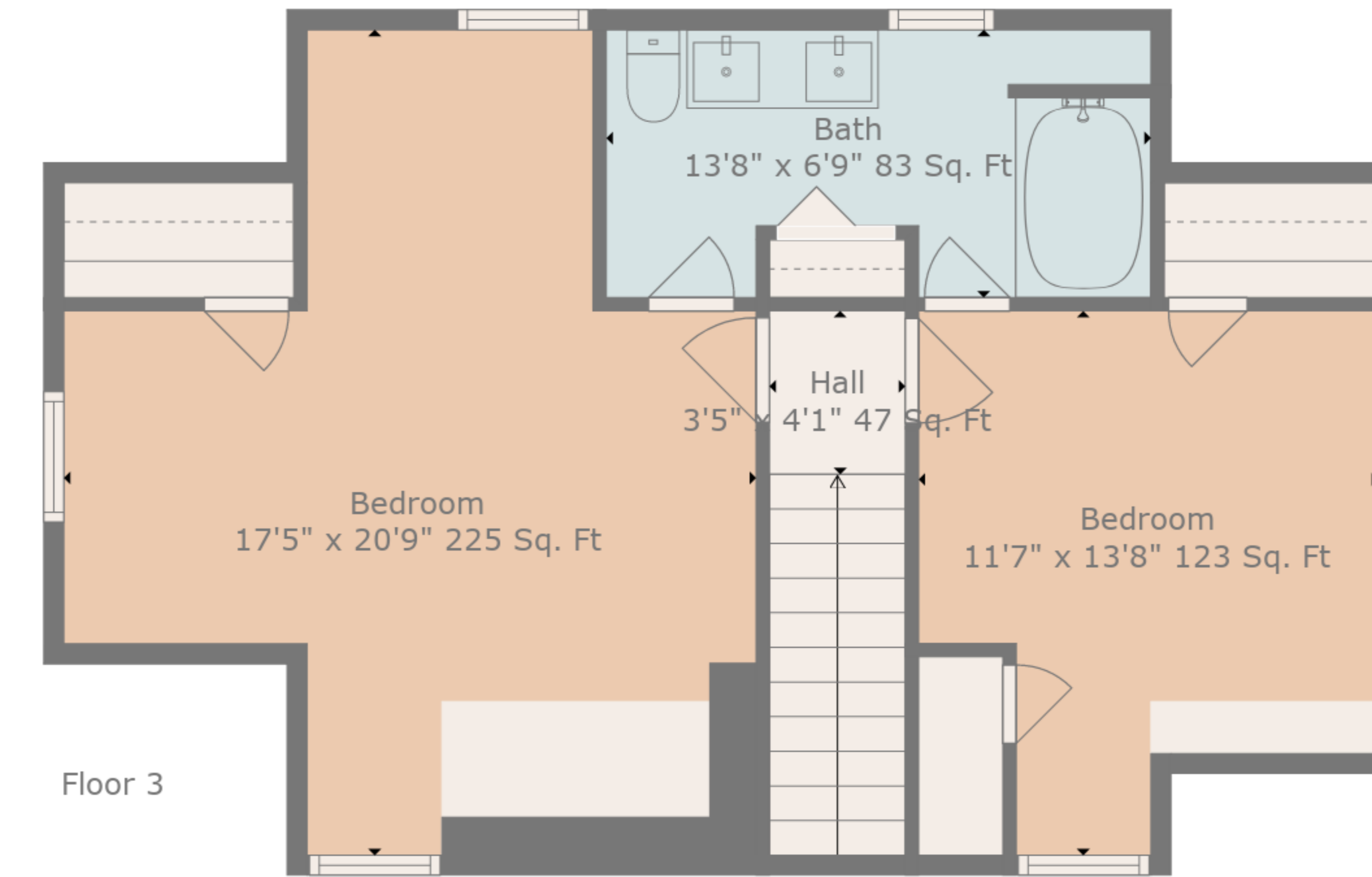
TOTAL: 1779 sq. ft
 BELOW GROUND: 0 sq. ft, FLOOR 2: 1251 sq. ft, FLOOR 3: 528 sq. ft
 EXCLUDED AREAS: BASEMENT: 915 sq. ft, PORCH: 182 sq. ft, LOW CEILING: 65 sq. ft

Sizes And Dimensions Are Approximate, Actual May Vary.

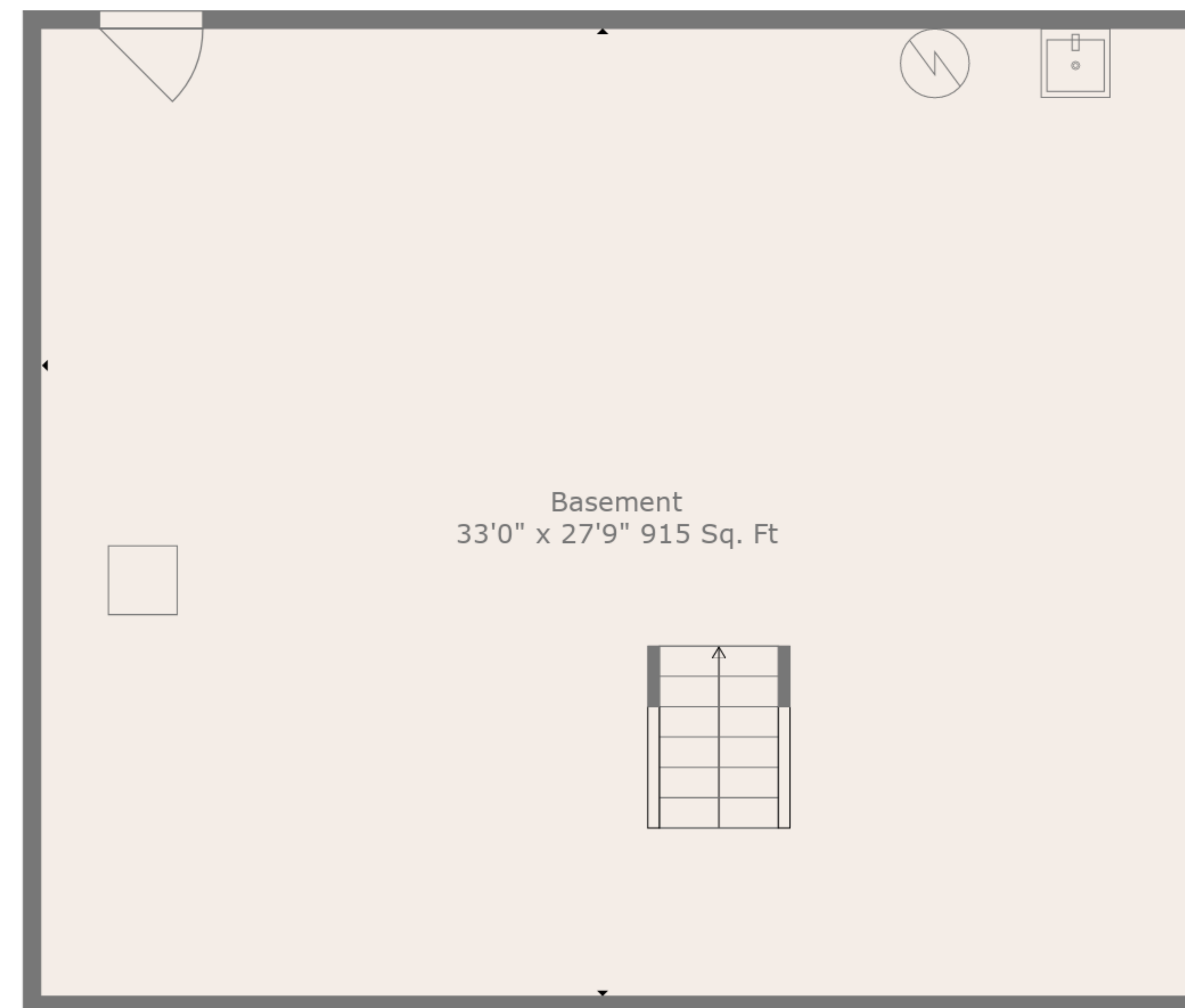




Floor 2



Floor 3



Floor 1

TOTAL: 1779 sq. ft
 BELOW GROUND: 0 sq. ft, FLOOR 2: 1251 sq. ft, FLOOR 3: 528 sq. ft
 EXCLUDED AREAS: BASEMENT: 915 sq. ft, PORCH: 182 sq. ft, LOW CEILING: 65 sq. ft

Sizes And Dimensions Are Approximate, Actual May Vary.

