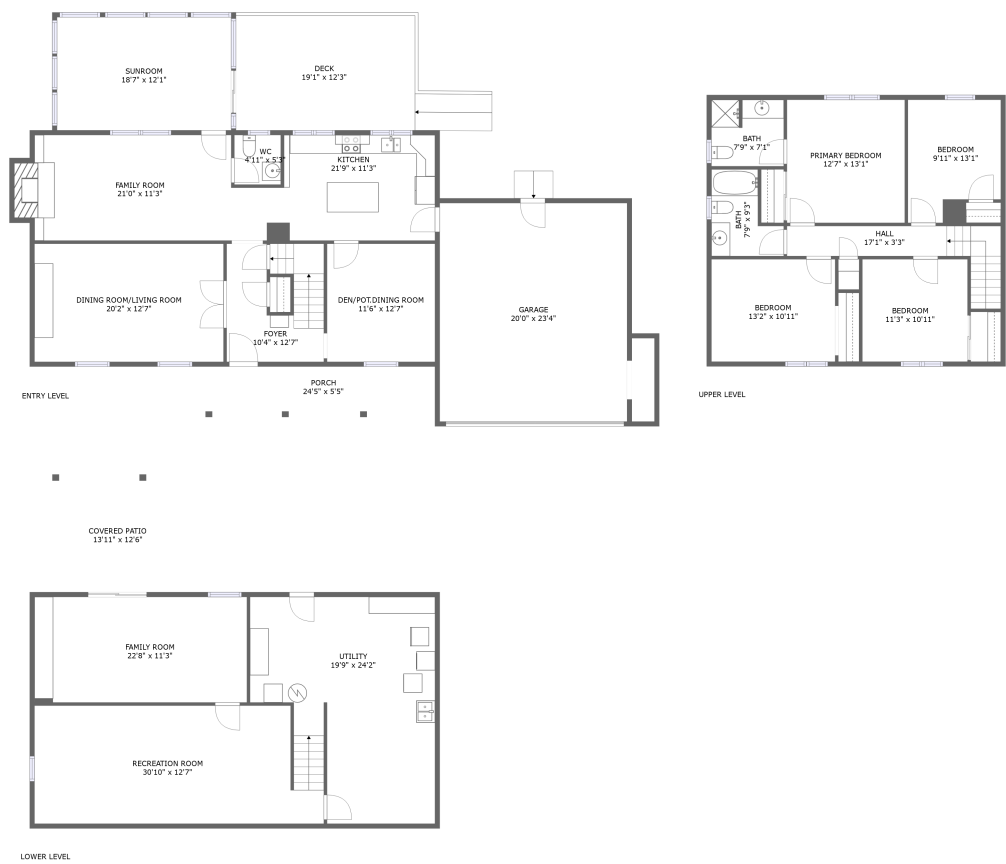


Home report

3936 Skylark Circle, Penn Forest, Cave Spring, Roanoke,
Roanoke County, Virginia, United States, 24018



Total Area: 2791 sq. ft

Floor 1: 649 sq. ft, Floor 2: 1281 sq. ft, Floor 3: 861 sq. ft

Excluded: Covered patio 175 sq. ft, Utility 383 sq. ft, Porch 132 sq. ft, Deck 244 sq. ft, Garage 465 sq. ft, Fireplace 15 sq. ft, Walls: 257 sq. ft

Property summary

 **3** Floors

 **4** Bedrooms

 **2** Bathrooms

Home report

**3936 Skylark Circle, Penn Forest, Cave Spring, Roanoke,
Roanoke County, Virginia, United States, 24018**



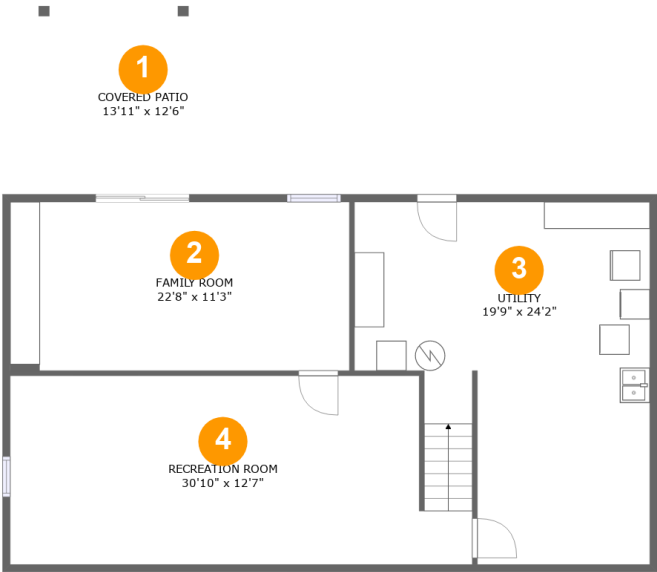
1
Half baths



1
Garages

Home report

3936 Skylark Circle, Penn Forest, Cave Spring, Roanoke,
Roanoke County, Virginia, United States, 24018



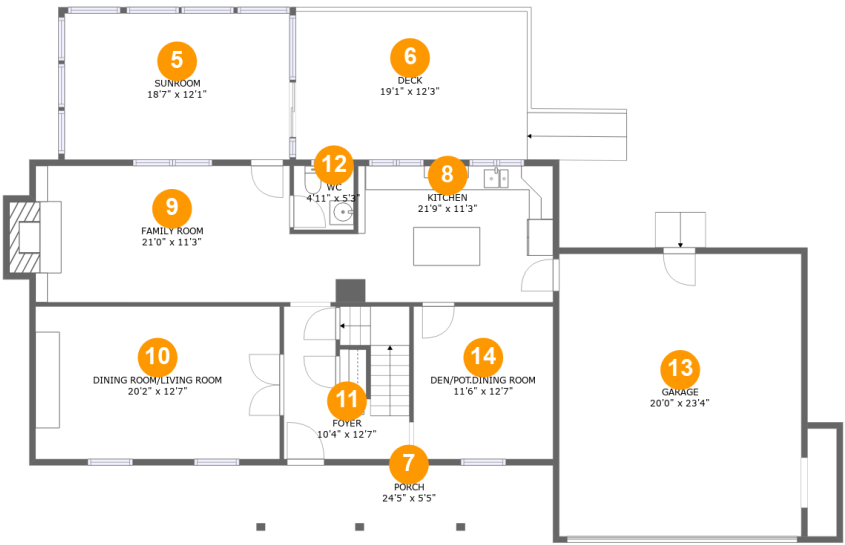
Room dimensions

Floor 1 Total:649sqft Excluded: 558sqft

#		Max Dimensions	sqft	Included
1	Covered Patio	13'11" x 12'6"	175 sq. ft	No
2	Family Room	22'8" x 11'3"	255 sq. ft	Yes
3	Utility	19'9" x 24'2"	382 sq. ft	No
4	Recreation Room	30'10" x 12'7"	375 sq. ft	Yes

Home report

3936 Skylark Circle, Penn Forest, Cave Spring, Roanoke,
Roanoke County, Virginia, United States, 24018



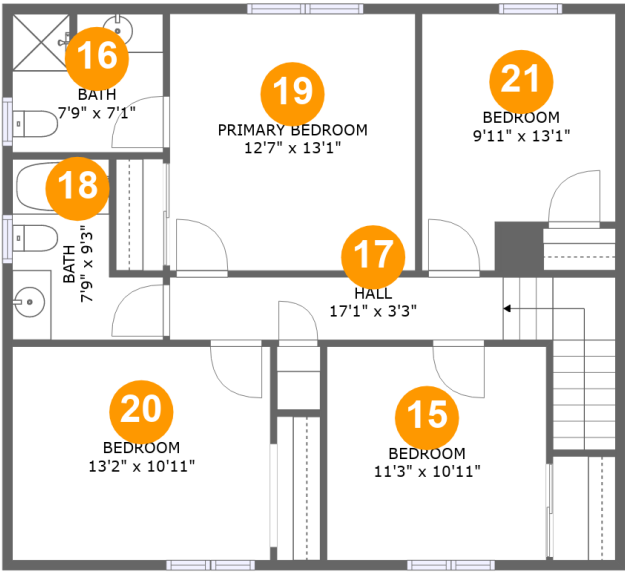
Room dimensions

Floor 2 Total:1281sqft Excluded: 856sqft

#		Max Dimensions	sqft	Included
5	Sunroom	18'7" x 12'1"	224 sq. ft	Yes
6	Deck	19'1" x 12'3"	244 sq. ft	No
7	Porch	24'5" x 5'5"	132 sq. ft	No
8	Kitchen	21'9" x 11'3"	213 sq. ft	Yes
9	Family Room	21'0" x 11'3"	249 sq. ft	Yes
10	Dining ROOM/LIVING Room	20'2" x 12'7"	254 sq. ft	Yes
11	Foyer	10'4" x 12'7"	117 sq. ft	Yes
12	WC	4'11" x 5'3"	26 sq. ft	Yes
13	Garage	20'0" x 23'4"	465 sq. ft	No
14	DEN/POT.DINING Room	11'6" x 12'7"	145 sq. ft	Yes

Home report

3936 Skylark Circle, Penn Forest, Cave Spring, Roanoke,
Roanoke County, Virginia, United States, 24018



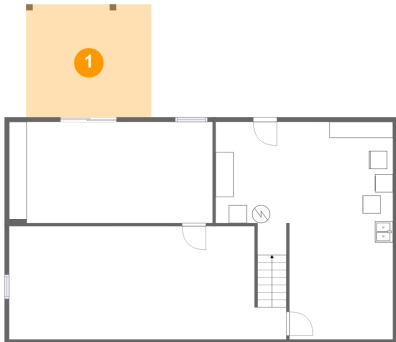
Room dimensions

Floor 3 Total:861sqft Excluded: 0sqft

#		Max Dimensions	sqft	Included
15	Bedroom	11'3" x 10'11"	122 sq. ft	Yes
16	Bath	7'9" x 7'1"	54 sq. ft	Yes
17	Hall	17'1" x 3'3"	91 sq. ft	Yes
18	Bath	7'9" x 9'3"	55 sq. ft	Yes
19	Primary Bedroom	12'7" x 13'1"	165 sq. ft	Yes
20	Bedroom	13'2" x 10'11"	144 sq. ft	Yes
21	Bedroom	9'11" x 13'1"	115 sq. ft	Yes

3936 Skylark Circle, Penn Forest, Cave Spring, Roanoke,
Roanoke County, Virginia, United States, 24018

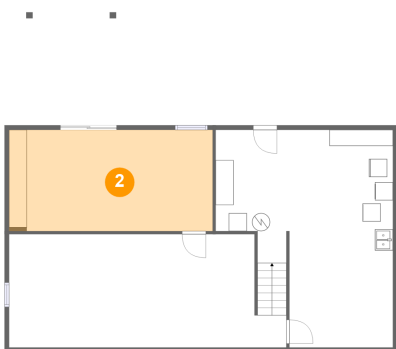
1 Floor 1 - Covered Patio



Max Dimensions: 13'11" x 12'6"
Calculated Area: 175 sq. ft
Included: No

Heated: No
Finished: Yes
Enclosed: No
Contiguous: Yes
Permitted: Yes
Wet space: No
Addition: No
Conversion: No

2 Floor 1 - Family Room

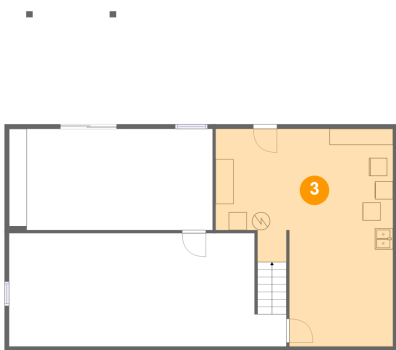


Max Dimensions: 22'8" x 11'3"
Calculated Area: 255 sq. ft
Included: Yes

Heated: Yes
Finished: Yes
Enclosed: Yes
Contiguous: Yes
Permitted: Yes
Wet space: No
Addition: No
Conversion: No

3936 Skylark Circle, Penn Forest, Cave Spring, Roanoke,
Roanoke County, Virginia, United States, 24018

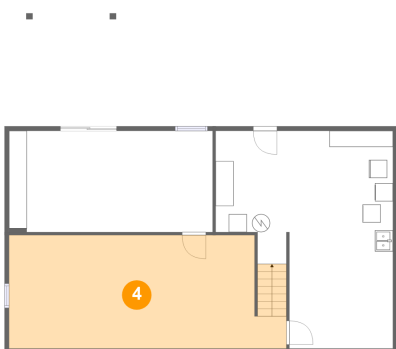
3 Floor 1 - Utility



Max Dimensions: 19'9" x 24'2"
Calculated Area: 382 sq. ft
Included: No

Heated: Yes
Finished: No
Enclosed: Yes
Contiguous: Yes
Permitted: Yes
Wet space: No
Addition: No
Conversion: No

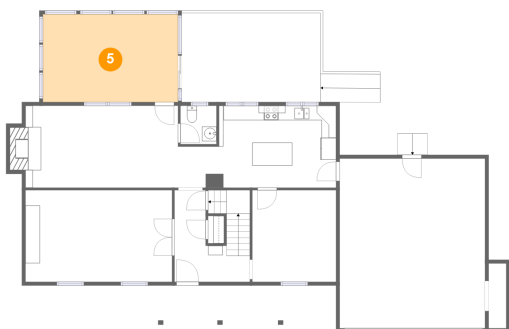
4 Floor 1 - Recreation Room



Max Dimensions: 30'10" x 12'7"
Calculated Area: 375 sq. ft
Included: Yes

Heated: Yes
Finished: Yes
Enclosed: Yes
Contiguous: Yes
Permitted: Yes
Wet space: No
Addition: No
Conversion: No

5 Floor 2 - Sunroom

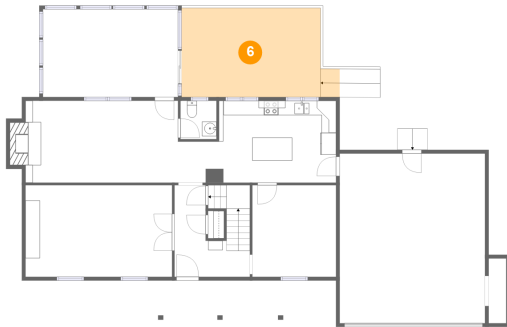


Max Dimensions: 18'7" x 12'1"
Calculated Area: 224 sq. ft
Included: Yes

Heated: Yes
Finished: Yes
Enclosed: Yes
Contiguous: Yes
Permitted: Yes
Wet space: No
Addition: No
Conversion: No

3936 Skylark Circle, Penn Forest, Cave Spring, Roanoke,
Roanoke County, Virginia, United States, 24018

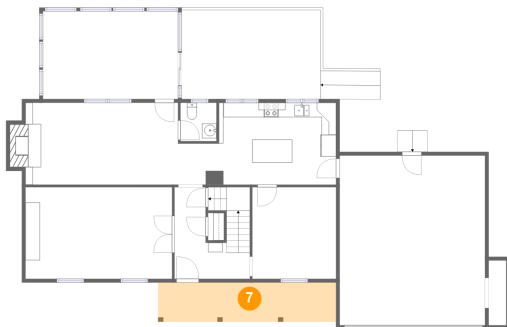
6 Floor 2 - Deck



Max Dimensions: 19'1" x 12'3"
Calculated Area: 244 sq. ft
Included: No

Heated: No
Finished: Yes
Enclosed: No
Contiguous: Yes
Permitted: Yes
Wet space: No
Addition: No
Conversion: No

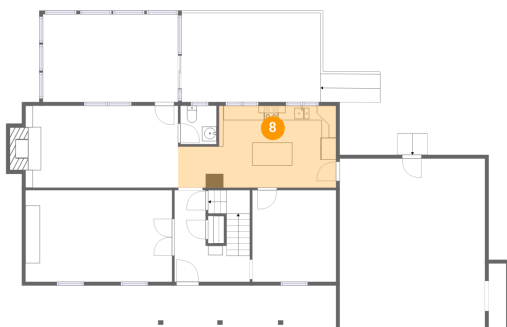
7 Floor 2 - Porch



Max Dimensions: 24'5" x 5'5"
Calculated Area: 132 sq. ft
Included: No

Heated: No
Finished: Yes
Enclosed: No
Contiguous: Yes
Permitted: Yes
Wet space: No
Addition: No
Conversion: No

8 Floor 2 - Kitchen

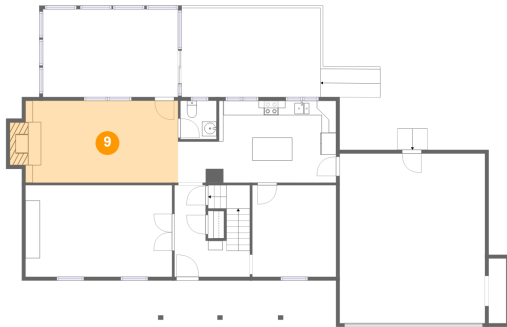


Max Dimensions: 21'9" x 11'3"
Calculated Area: 213 sq. ft
Included: Yes

Heated: Yes
Finished: Yes
Enclosed: Yes
Contiguous: Yes
Permitted: Yes
Wet space: No
Addition: No
Conversion: No

3936 Skylark Circle, Penn Forest, Cave Spring, Roanoke,
Roanoke County, Virginia, United States, 24018

9 Floor 2 - Family Room



Max Dimensions: 21'0" x 11'3"
Calculated Area: 249 sq. ft
Included: Yes

Heated: Yes
Finished: Yes
Enclosed: Yes
Contiguous: Yes
Permitted: Yes
Wet space: No
Addition: No
Conversion: No

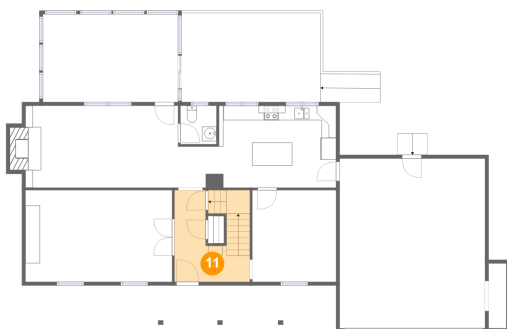
10 Floor 2 - Dining ROOM/LIVING Room



Max Dimensions: 20'2" x 12'7"
Calculated Area: 254 sq. ft
Included: Yes

Heated: Yes
Finished: Yes
Enclosed: Yes
Contiguous: Yes
Permitted: Yes
Wet space: No
Addition: No
Conversion: No

11 Floor 2 - Foyer

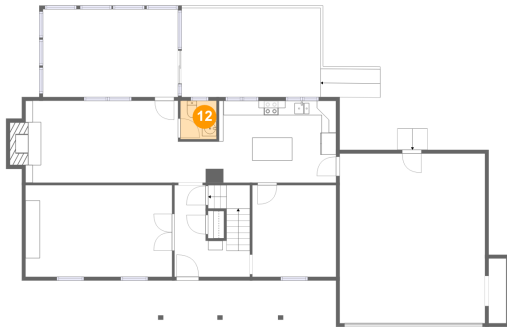


Max Dimensions: 10'4" x 12'7"
Calculated Area: 117 sq. ft
Included: Yes

Heated: Yes
Finished: Yes
Enclosed: Yes
Contiguous: Yes
Permitted: Yes
Wet space: No
Addition: No
Conversion: No

3936 Skylark Circle, Penn Forest, Cave Spring, Roanoke,
Roanoke County, Virginia, United States, 24018

12 Floor 2 - WC



Max Dimensions: 4'11" x 5'3"
Calculated Area: 26 sq. ft
Included: Yes

Heated: Yes
Finished: Yes
Enclosed: Yes
Contiguous: Yes
Permitted: Yes
Wet space: Yes
Addition: No
Conversion: No

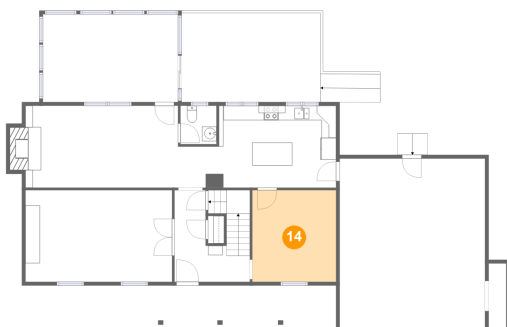
13 Floor 2 - Garage



Max Dimensions: 20'0" x 23'4"
Calculated Area: 465 sq. ft
Included: No

Heated: No
Finished: No
Enclosed: Yes
Contiguous: Yes
Permitted: Yes
Wet space: No
Addition: No
Conversion: No

14 Floor 2 - DEN/POT.DINING Room

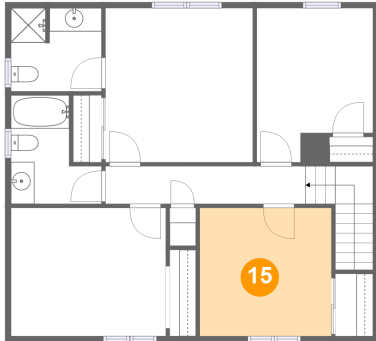


Max Dimensions: 11'6" x 12'7"
Calculated Area: 145 sq. ft
Included: Yes

Heated: Yes
Finished: Yes
Enclosed: Yes
Contiguous: Yes
Permitted: Yes
Wet space: No
Addition: No
Conversion: No

3936 Skylark Circle, Penn Forest, Cave Spring, Roanoke,
Roanoke County, Virginia, United States, 24018

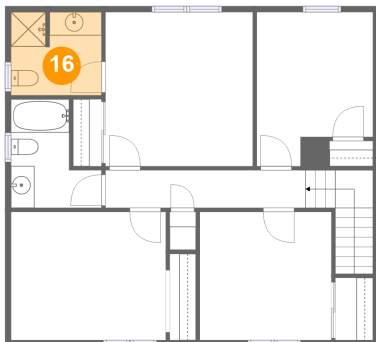
15 Floor 3 - Bedroom



Max Dimensions: 11'3" x 10'11"
Calculated Area: 122 sq. ft
Included: Yes

Heated: Yes
Finished: Yes
Enclosed: Yes
Contiguous: Yes
Permitted: Yes
Wet space: No
Addition: No
Conversion: No

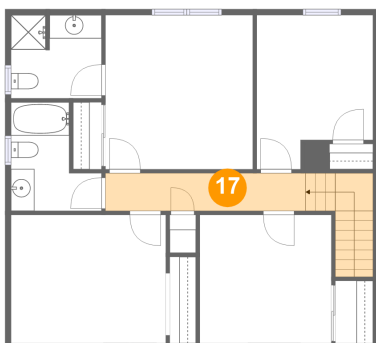
16 Floor 3 - Bath



Max Dimensions: 7'9" x 7'1"
Calculated Area: 54 sq. ft
Included: Yes

Heated: Yes
Finished: Yes
Enclosed: Yes
Contiguous: Yes
Permitted: Yes
Wet space: Yes
Addition: No
Conversion: No

17 Floor 3 - Hall

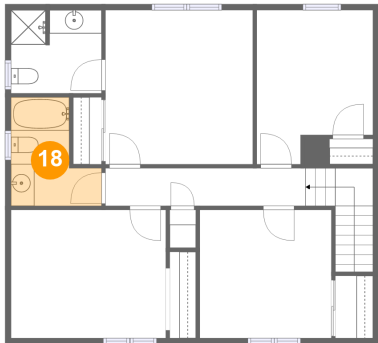


Max Dimensions: 17'1" x 3'3"
Calculated Area: 91 sq. ft
Included: Yes

Heated: Yes
Finished: Yes
Enclosed: Yes
Contiguous: Yes
Permitted: Yes
Wet space: No
Addition: No
Conversion: No

3936 Skylark Circle, Penn Forest, Cave Spring, Roanoke,
Roanoke County, Virginia, United States, 24018

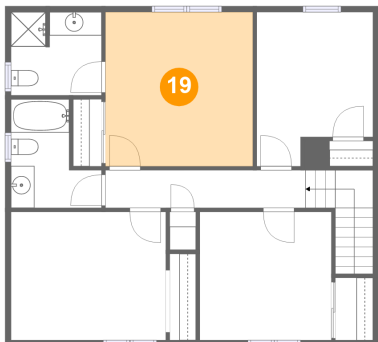
18 Floor 3 - Bath



Max Dimensions: 7'9" x 9'3"
Calculated Area: 55 sq. ft
Included: Yes

Heated: Yes
Finished: Yes
Enclosed: Yes
Contiguous: Yes
Permitted: Yes
Wet space: Yes
Addition: No
Conversion: No

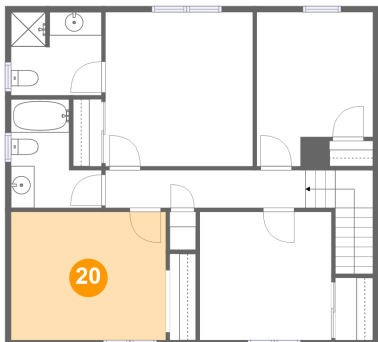
19 Floor 3 - Primary Bedroom



Max Dimensions: 12'7" x 13'1"
Calculated Area: 165 sq. ft
Included: Yes

Heated: Yes
Finished: Yes
Enclosed: Yes
Contiguous: Yes
Permitted: Yes
Wet space: No
Addition: No
Conversion: No

20 Floor 3 - Bedroom

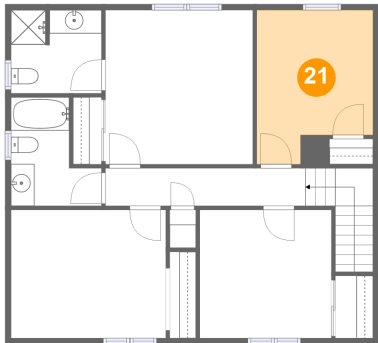


Max Dimensions: 13'2" x 10'11"
Calculated Area: 144 sq. ft
Included: Yes

Heated: Yes
Finished: Yes
Enclosed: Yes
Contiguous: Yes
Permitted: Yes
Wet space: No
Addition: No
Conversion: No

3936 Skylark Circle, Penn Forest, Cave Spring, Roanoke,
Roanoke County, Virginia, United States, 24018

21 Floor 3 - Bedroom



Max Dimensions: 9'11" x 13'1"
Calculated Area: 115 sq. ft
Included: Yes

Heated: Yes
Finished: Yes
Enclosed: Yes
Contiguous: Yes
Permitted: Yes
Wet space: No
Addition: No
Conversion: No