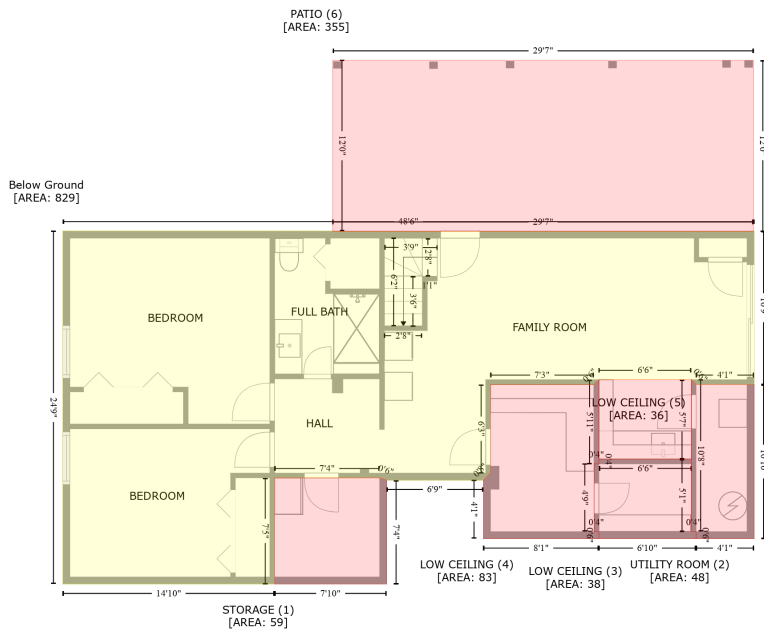
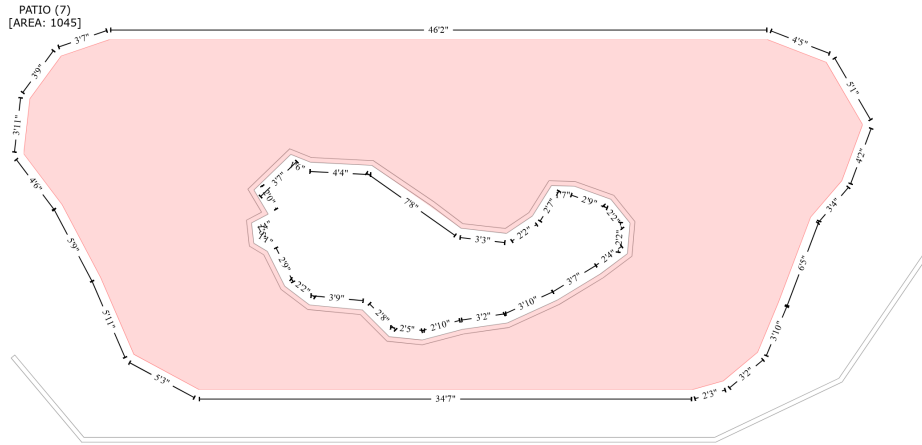


# 186 Oliver Smith Road, Flintville, Lincoln County, Tennessee, United States, 37335

Gross Living Area: 1322 sq. ft



## Space

Area (sq. ft)

Calculation Coordinate Polygon Area Algorithm using inches

Below Ground  
(Living area)

829

$$\begin{aligned}
 & -((290.3 + 290.3) * (762.5 - 762.7) + (290.3 + 644.8) * (762.7 - 762.7) + (644.8 + 645.4) * (762.7 - \\
 & 762.5) + (645.4 + 645.4) * (762.5 - 891.7) + (645.4 + 596.5) * (891.7 - 891.7) + (596.5 + 592.5) * \\
 & (891.7 - 887.7) + (592.5 + 514.6) * (887.7 - 887.7) + (514.6 + 510.6) * (887.7 - 891.7) + (510.6 + \\
 & 423.2) * (891.7 - 891.7) + (423.2 + 423.2) * (891.7 - 966.4) + (423.2 + 417.2) * (966.4 - 972.4) + \\
 & (417.2 + 335.8) * (972.4 - 972.4) + (335.8 + 329.8) * (972.4 - 970.5) + (329.8 + 241.3) * (970.5 - \\
 & 970.5) + (241.3 + 241.3) * (970.5 - 1059.9) + (241.3 + 62.9) * (1059.9 - 1059.9) + (62.9 + 62.9) * \\
 & (1059.9 - 762.5) + (62.9 + 290.3) * (762.5 - 762.5)) * 0.5 * 0.00694
 \end{aligned}$$

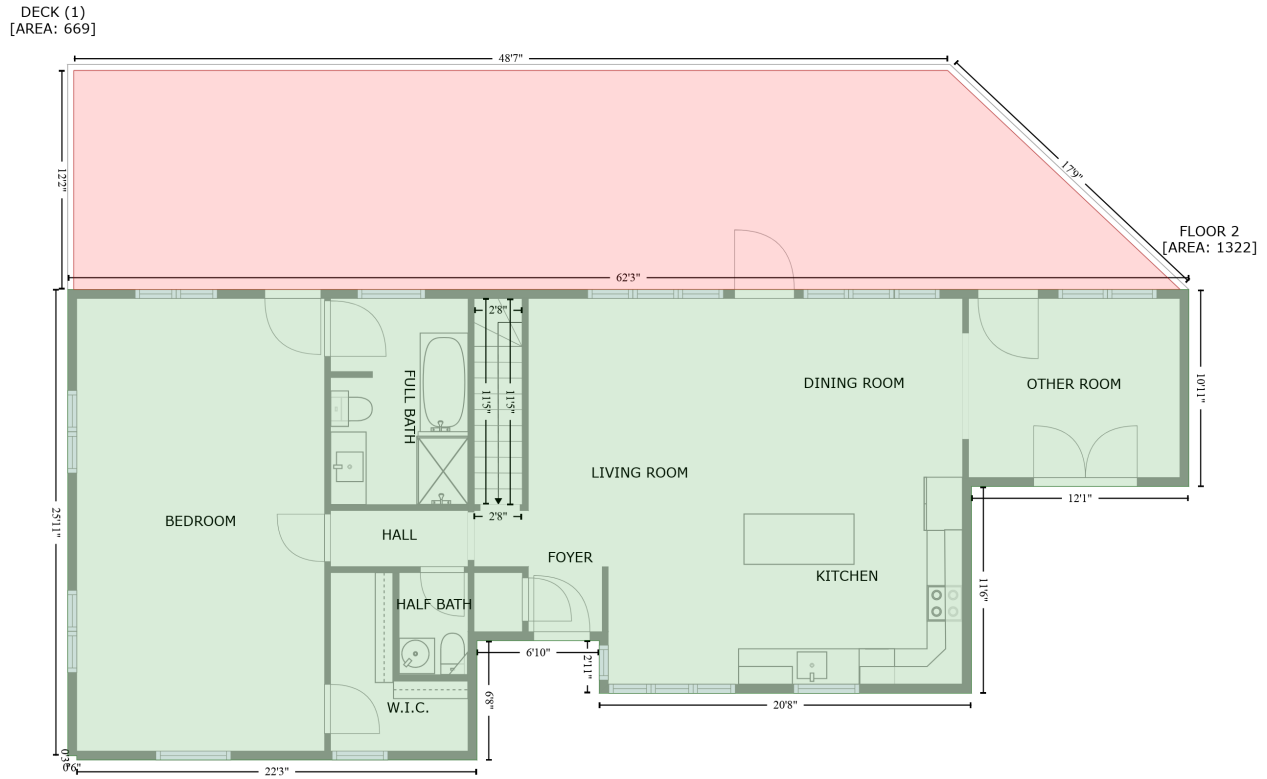
# 186 Oliver Smith Road, Flintville, Lincoln County, Tennessee, United States, 37335

Gross Living Area: 1322 sq. ft

Space	Area (sq. ft)	Calculation <small>Coordinate Polygon Area Algorithm using inches</small>
STORAGE (Non-living area)	59	$-\left((329.8 + 335.8) * (970.5 - 972.4) + (335.8 + 335.8) * (972.4 - 1059.9) + (335.8 + 241.3) * (1059.9 - 1059.9) + (241.3 + 241.3) * (1059.9 - 970.5) + (241.3 + 329.8) * (970.5 - 970.5)\right) * 0.5 * 0.00694$
UTILITY ROOM (Non-living area)	48	$-\left((592.5 + 596.5) * (887.7 - 891.7) + (596.5 + 645.4) * (891.7 - 891.7) + (645.4 + 645.4) * (891.7 - 1021.7) + (645.4 + 596.5) * (1021.7 - 1021.7) + (596.5 + 596.5) * (1021.7 - 1015.7) + (596.5 + 592.5) * (1015.7 - 1015.7) + (592.5 + 592.5) * (1015.7 - 887.7)\right) * 0.5 * 0.00694$
LOW CEILING (Non-living area)	38	$-\left((592.5 + 592.5) * (954.7 - 1015.7) + (592.5 + 596.5) * (1015.7 - 1015.7) + (596.5 + 596.5) * (1015.7 - 1021.7) + (596.5 + 514.6) * (1021.7 - 1021.7) + (514.6 + 514.6) * (1021.7 - 1015.7) + (514.6 + 510.6) * (1015.7 - 1015.7) + (510.6 + 510.6) * (1015.7 - 958.7) + (510.6 + 514.6) * (958.7 - 958.7) + (514.6 + 514.6) * (958.7 - 954.7) + (514.6 + 592.5) * (954.7 - 954.7)\right) * 0.5 * 0.00694$
LOW CEILING (Non-living area)	83	$-\left((514.6 + 514.6) * (887.7 - 958.7) + (514.6 + 510.6) * (958.7 - 958.7) + (510.6 + 510.6) * (958.7 - 1015.7) + (510.6 + 514.6) * (1015.7 - 1015.7) + (514.6 + 514.6) * (1015.7 - 1021.7) + (514.6 + 417.2) * (1021.7 - 1021.7) + (417.2 + 417.2) * (1021.7 - 972.4) + (417.2 + 423.2) * (972.4 - 966.4) + (423.2 + 423.2) * (966.4 - 891.7) + (423.2 + 510.6) * (891.7 - 891.7) + (510.6 + 514.6) * (891.7 - 887.7)\right) * 0.5 * 0.00694$
LOW CEILING (Non-living area)	36	$-\left((592.5 + 592.5) * (887.7 - 954.7) + (592.5 + 514.6) * (954.7 - 954.7) + (514.6 + 514.6) * (954.7 - 887.7) + (514.6 + 592.5) * (887.7 - 887.7)\right) * 0.5 * 0.00694$
PATIO (Non-living area)	355	$-\left((644.8 + 644.8) * (618.6 - 762.7) + (644.8 + 290.3) * (762.7 - 762.7) + (290.3 + 290.3) * (762.7 - 618.6) + (290.3 + 644.8) * (618.6 - 618.6)\right) * 0.5 * 0.00694$
PATIO (Non-living area)	1045	$-\left((772.5 + 822.4) * (114.9 - 134.1) + (822.4 + 853) * (134.1 - 186.7) + (853 + 835.5) * (186.7 - 234) + (835.5 + 809.2) * (234 - 264.6) + (809.2 + 782.1) * (264.6 - 336.4) + (782.1 + 764.6) * (336.4 - 378.5) + (764.6 + 735.7) * (378.5 - 402.6) + (735.7 + 709.4) * (402.6 - 410) + (709.4 + 294.1) * (410 - 410) + (294.1 + 239) * (410 - 380.2) + (239 + 211) * (380.2 - 315.4) + (211 + 178.6) * (315.4 - 254.1) + (178.6 + 146.2) * (254.1 - 211.2) + (146.2 + 151.4) * (211.2 - 164.8) + (151.4 + 177.7) * (164.8 - 128.9) + (177.7 + 218.9) * (128.9 - 114.9) + (218.9 + 772.5) * (114.9 - 114.9)\right) * 0.5 * 0.00694 + \left((371.2 + 340.2) * (211.8 - 241.8) + (340.2 + 352.2) * (241.8 - 262.1) + (352.2 + 338.2) * (262.1 - 269.5) + (338.2 + 340.1) * (269.5 - 286.6) + (340.1 + 351.5) * (286.6 - 293.5) + (351.5 + 366.2) * (293.5 - 322.8) + (366.2 + 387) * (322.8 - 338.6) + (387 + 431.6) * (338.6 - 342.9) + (431.6 + 454.1) * (342.9 - 365.3) + (454.1 + 483.2) * (365.3 - 368.1) + (483.2 + 515.8) * (368.1 - 359.2) + (515.8 + 553.7) * (359.2 - 353.8) + (553.7 + 595.5) * (353.8 - 334.7) + (595.5 + 632.5) * (334.7 - 312) + (632.5 + 654.9) * (312 - 295.4) + (654.9 + 657.1) * (295.4 - 269.6) + (657.1 + 641) * (269.6 - 249.6) + (641 + 610.1) * (249.6 - 238.6) + (610.1 + 590.9) * (238.6 - 238) + (590.9 + 574.5) * (238 - 263.9) + (574.5 + 553) * (263.9 - 278.3) + (553 + 514.7) * (278.3 - 274) + (514.7 + 439.5) * (274 - 221) + (439.5 + 387.7) * (221 - 218.3) + (387.7 + 371.2) * (218.3 - 211.8)\right) * 0.5 * 0.00694$

# 186 Oliver Smith Road, Flintville, Lincoln County, Tennessee, United States, 37335

Gross Living Area: 1322 sq. ft



Space	Area (sq. ft)	Calculation <small>Coordinate Polygon Area Algorithm using inches</small>
FLOOR 2 (Living area)	1322	$-((810.3 + 810.3) * (762.5 - 893.8) + (810.3 + 665.4) * (893.8 - 893.8) + (665.4 + 665.4) * (893.8 - 1031.6) + (665.4 + 417.2) * (1031.6 - 1031.6) + (417.2 + 417.2) * (1031.6 - 996.6) + (417.2 + 335.7) * (996.6 - 996.6) + (335.7 + 335.7) * (996.6 - 1076.1) + (335.7 + 68.9) * (1076.1 - 1076.1) + (68.9 + 68.9) * (1076.1 - 1073.2) + (68.9 + 62.9) * (1073.2 - 1073.2) + (62.9 + 62.9) * (1073.2 - 762.5) + (62.9 + 810.3) * (762.5 - 762.5)) * 0.5 * 0.00694$
DECK (Non-living area)	669	$-((649.5 + 804.3) * (616.6 - 762.3) + (804.3 + 66.9) * (762.3 - 762.5) + (66.9 + 66.9) * (762.5 - 616.6) + (66.9 + 649.5) * (616.6 - 616.6)) * 0.5 * 0.00694$