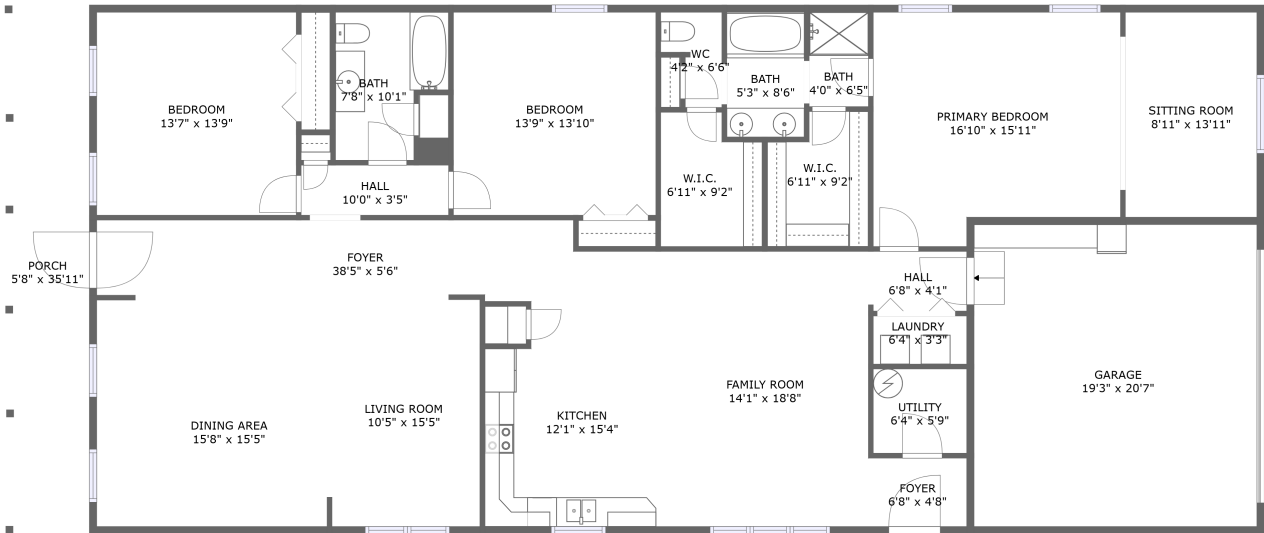


Home report

16 North Bruffey Street, Westfield, Salem, Salem city, Virginia,
United States, 24153



FLOOR 1

Total Area: 2464 sq. ft

Floor 1: 2464 sq. ft

Excluded: Garage 416 sq. ft, Outdoor Porch 205 sq. ft

Property summary



1 Floors



3 Bedrooms



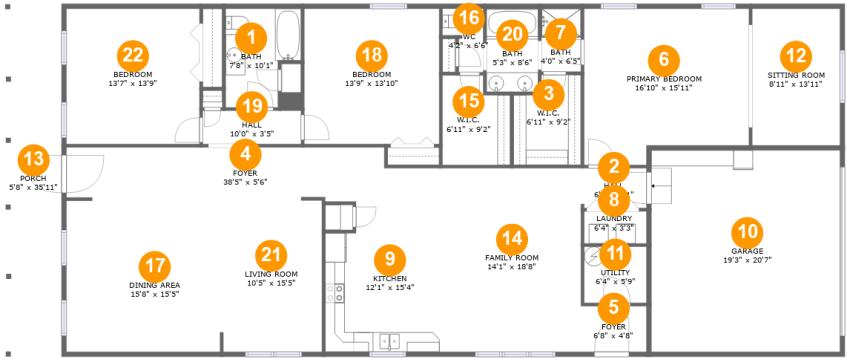
2 Bathrooms



1 Garages

Home report

16 North Bruffey Street, Westfield, Salem, Salem city, Virginia,
United States, 24153



Room dimensions

Floor 1

Total:2464sqft Excluded: 621sqft

#		Max Dimensions	sqft	Included
1	Bath	7'8" x 10'1"	66 sq. ft	Yes
2	Hall	6'8" x 4'1"	27 sq. ft	Yes
3	W.I.C.	6'11" x 9'2"	57 sq. ft	Yes
4	Foyer	38'5" x 5'6"	196 sq. ft	Yes
5	Foyer	6'8" x 4'8"	31 sq. ft	Yes
6	Primary Bedroom	16'10" x 15'11"	247 sq. ft	Yes
7	Bath	4'0" x 6'5"	26 sq. ft	Yes
8	Laundry	6'4" x 3'3"	21 sq. ft	Yes
9	Kitchen	12'1" x 15'4"	175 sq. ft	Yes
10	Garage	19'3" x 20'7"	396 sq. ft	No
11	Utility	6'4" x 5'9"	36 sq. ft	Yes

Home report

**16 North Bruffey Street, Westfield, Salem, Salem city, Virginia,
United States, 24153**

#		Max Dimensions	sqft	Included
12	Sitting Room	8'11" x 13'11"	125 sq. ft	Yes
13	Porch	5'8" x 35'11"	205 sq. ft	No
14	Family Room	14'1" x 18'8"	263 sq. ft	Yes
15	W.I.C.	6'11" x 9'2"	58 sq. ft	Yes
16	WC	4'2" x 6'6"	21 sq. ft	Yes
17	Dining Area	15'8" x 15'5"	242 sq. ft	Yes
18	Bedroom	13'9" x 13'10"	190 sq. ft	Yes
19	Hall	10'0" x 3'5"	34 sq. ft	Yes
20	Bath	5'3" x 8'6"	45 sq. ft	Yes
21	Living Room	10'5" x 15'5"	160 sq. ft	Yes
22	Bedroom	13'7" x 13'9"	188 sq. ft	Yes

16 North Bruffey Street, Westfield, Salem, Salem city, Virginia,
United States, 24153

1 Floor 1 - Bath



Max Dimensions: 7'8" x 10'1"
Calculated Area: 66 sq. ft
Included: Yes

Heated: Yes
Finished: Yes
Enclosed: Yes
Contiguous: Yes
Permitted: Yes
Wet space: Yes
Addition: No
Conversion: No

2 Floor 1 - Hall



Max Dimensions: 6'8" x 4'1"
Calculated Area: 27 sq. ft
Included: Yes

Heated: Yes
Finished: Yes
Enclosed: Yes
Contiguous: Yes
Permitted: Yes
Wet space: No
Addition: No
Conversion: No

16 North Bruffey Street, Westfield, Salem, Salem city, Virginia,
United States, 24153

3 Floor 1 - W.I.C.



Max Dimensions: 6'11" x 9'2"
Calculated Area: 57 sq. ft
Included: Yes

Heated: Yes
Finished: Yes
Enclosed: Yes
Contiguous: Yes
Permitted: Yes
Wet space: No
Addition: No
Conversion: No

4 Floor 1 - Foyer



Max Dimensions: 38'5" x 5'6"
Calculated Area: 196 sq. ft
Included: Yes

Heated: Yes
Finished: Yes
Enclosed: Yes
Contiguous: Yes
Permitted: Yes
Wet space: No
Addition: No
Conversion: No

5 Floor 1 - Foyer



Max Dimensions: 6'8" x 4'8"
Calculated Area: 31 sq. ft
Included: Yes

Heated: Yes
Finished: Yes
Enclosed: Yes
Contiguous: Yes
Permitted: Yes
Wet space: No
Addition: No
Conversion: No

16 North Bruffey Street, Westfield, Salem, Salem city, Virginia,
United States, 24153

6 Floor 1 - Primary Bedroom



Max Dimensions: 16'10" x 15'11"
Calculated Area: 247 sq. ft
Included: Yes

Heated: Yes
Finished: Yes
Enclosed: Yes
Contiguous: Yes
Permitted: Yes
Wet space: No
Addition: No
Conversion: No

7 Floor 1 - Bath



Max Dimensions: 4'0" x 6'5"
Calculated Area: 26 sq. ft
Included: Yes

Heated: Yes
Finished: Yes
Enclosed: Yes
Contiguous: Yes
Permitted: Yes
Wet space: Yes
Addition: No
Conversion: No

8 Floor 1 - Laundry



Max Dimensions: 6'4" x 3'3"
Calculated Area: 21 sq. ft
Included: Yes

Heated: Yes
Finished: Yes
Enclosed: Yes
Contiguous: Yes
Permitted: Yes
Wet space: No
Addition: No
Conversion: No

16 North Bruffey Street, Westfield, Salem, Salem city, Virginia,
United States, 24153

9 Floor 1 - Kitchen



Max Dimensions: 12'1" x 15'4"
Calculated Area: 175 sq. ft
Included: Yes

Heated: Yes
Finished: Yes
Enclosed: Yes
Contiguous: Yes
Permitted: Yes
Wet space: No
Addition: No
Conversion: No

10 Floor 1 - Garage



Max Dimensions: 19'3" x 20'7"
Calculated Area: 396 sq. ft
Included: No

Heated: No
Finished: No
Enclosed: Yes
Contiguous: Yes
Permitted: Yes
Wet space: No
Addition: No
Conversion: No

11 Floor 1 - Utility



Max Dimensions: 6'4" x 5'9"
Calculated Area: 36 sq. ft
Included: Yes

Heated: Yes
Finished: Yes
Enclosed: Yes
Contiguous: Yes
Permitted: Yes
Wet space: No
Addition: No
Conversion: No

16 North Bruffey Street, Westfield, Salem, Salem city, Virginia,
United States, 24153

12 Floor 1 - Sitting Room



Max Dimensions: 8'11" x 13'11"
Calculated Area: 125 sq. ft
Included: Yes

Heated: Yes
Finished: Yes
Enclosed: Yes
Contiguous: Yes
Permitted: Yes
Wet space: No
Addition: No
Conversion: No

13 Floor 1 - Porch



Max Dimensions: 5'8" x 35'11"
Calculated Area: 205 sq. ft
Included: No

Heated: No
Finished: Yes
Enclosed: No
Contiguous: Yes
Permitted: Yes
Wet space: No
Addition: No
Conversion: No

14 Floor 1 - Family Room



Max Dimensions: 14'1" x 18'8"
Calculated Area: 263 sq. ft
Included: Yes

Heated: Yes
Finished: Yes
Enclosed: Yes
Contiguous: Yes
Permitted: Yes
Wet space: No
Addition: No
Conversion: No

16 North Bruffey Street, Westfield, Salem, Salem city, Virginia,
United States, 24153

15 Floor 1 - W.I.C.



Max Dimensions: 6'11" x 9'2"
Calculated Area: 58 sq. ft
Included: Yes

Heated: Yes
Finished: Yes
Enclosed: Yes
Contiguous: Yes
Permitted: Yes
Wet space: No
Addition: No
Conversion: No

16 Floor 1 - WC



Max Dimensions: 4'2" x 6'6"
Calculated Area: 21 sq. ft
Included: Yes

Heated: Yes
Finished: Yes
Enclosed: Yes
Contiguous: Yes
Permitted: Yes
Wet space: No
Addition: No
Conversion: No

17 Floor 1 - Dining Area



Max Dimensions: 15'8" x 15'5"
Calculated Area: 242 sq. ft
Included: Yes

Heated: Yes
Finished: Yes
Enclosed: Yes
Contiguous: Yes
Permitted: Yes
Wet space: No
Addition: No
Conversion: No

16 North Bruffey Street, Westfield, Salem, Salem city, Virginia,
United States, 24153

18 Floor 1 - Bedroom



Max Dimensions: 13'9" x 13'10"
Calculated Area: 190 sq. ft
Included: Yes

Heated: Yes
Finished: Yes
Enclosed: Yes
Contiguous: Yes
Permitted: Yes
Wet space: No
Addition: No
Conversion: No

19 Floor 1 - Hall



Max Dimensions: 10'0" x 3'5"
Calculated Area: 34 sq. ft
Included: Yes

Heated: Yes
Finished: Yes
Enclosed: Yes
Contiguous: Yes
Permitted: Yes
Wet space: No
Addition: No
Conversion: No

20 Floor 1 - Bath



Max Dimensions: 5'3" x 8'6"
Calculated Area: 45 sq. ft
Included: Yes

Heated: Yes
Finished: Yes
Enclosed: Yes
Contiguous: Yes
Permitted: Yes
Wet space: Yes
Addition: No
Conversion: No

16 North Bruffey Street, Westfield, Salem, Salem city, Virginia,
United States, 24153

21 Floor 1 - Living Room



Max Dimensions: 10'5" x 15'5"
Calculated Area: 160 sq. ft
Included: Yes

Heated: Yes
Finished: Yes
Enclosed: Yes
Contiguous: Yes
Permitted: Yes
Wet space: No
Addition: No
Conversion: No

22 Floor 1 - Bedroom



Max Dimensions: 13'7" x 13'9"
Calculated Area: 188 sq. ft
Included: Yes

Heated: Yes
Finished: Yes
Enclosed: Yes
Contiguous: Yes
Permitted: Yes
Wet space: No
Addition: No
Conversion: No