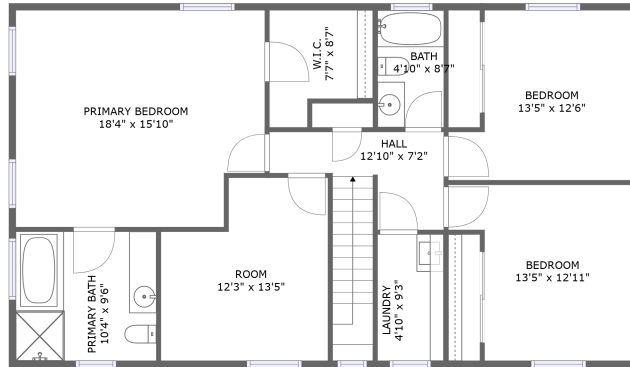
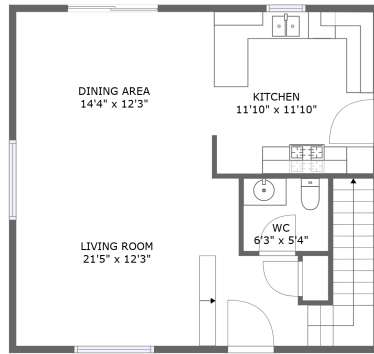


9427 Noble Avenue, North Hills, Los Angeles County, California, United States, 91343, 110



FLOOR 2




FLOOR 1

Property Summary

 **0** garages

 **3** bedrooms

 **2** bathrooms

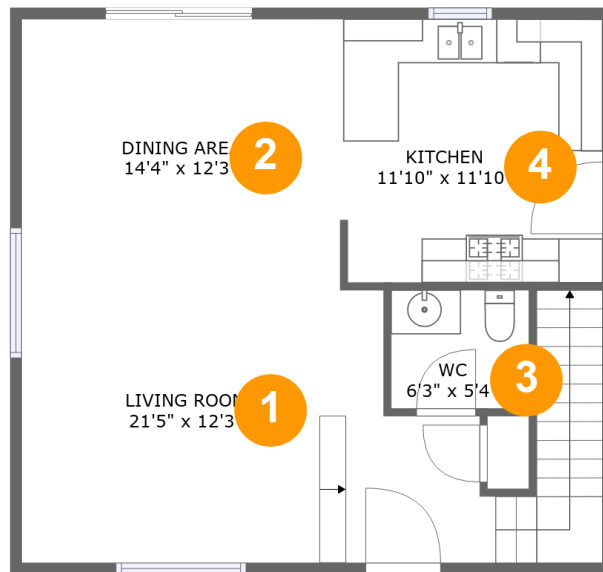
 **1** half baths

 **2** floors

 **1,933** Gross Living Area sqft

 **1,933** total sqft

9427 Noble Avenue, North Hills, Los Angeles County, California, United States, 91343, 110



Room Dimensions

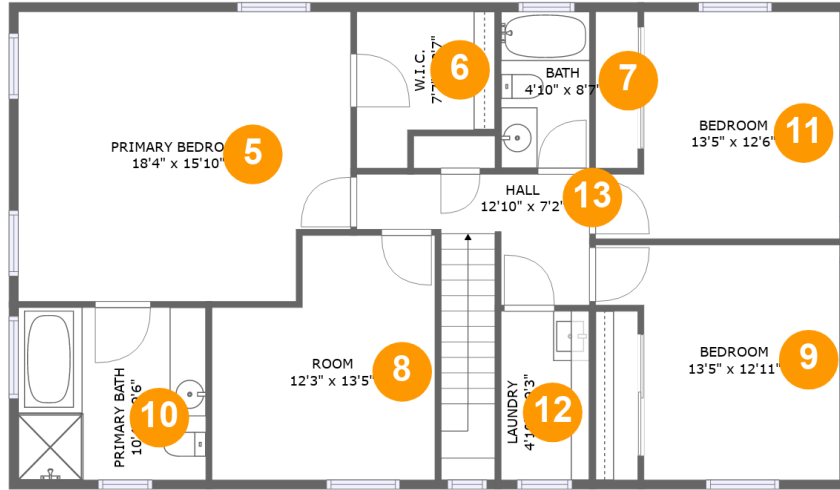
Floor 1

Total sqft: 697

Living area: 697

#	Room name	Dimensions	Area (sqft)	Counted as Living Area
1	Living Room	21'5" x 12'3"	275 sq. ft	Yes
2	Dining Area	14'4" x 12'3"	176 sq. ft	Yes
3	Wc	6'3" x 5'4"	33 sq. ft	Yes
4	Kitchen	11'10" x 11'10"	140 sq. ft	Yes

9427 Noble Avenue, North Hills, Los Angeles County, California, United States, 91343, 110



Room Dimensions

Floor 2

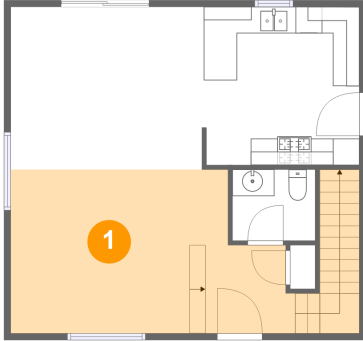
Total sqft: 1236

Living area: 1236

#	Room name	Dimensions	Area (sqft)	Counted as Living Area
5	Primary Bedroom	18'4" x 15'10"	280 sq. ft	Yes
6	W.i.c.	7'7" x 8'7"	55 sq. ft	Yes
7	Bath	4'10" x 8'7"	42 sq. ft	Yes
8	Room	12'3" x 13'5"	145 sq. ft	Yes
9	Bedroom	13'5" x 12'11"	148 sq. ft	Yes
10	Primary Bath	10'4" x 9'6"	98 sq. ft	Yes
11	Bedroom	13'5" x 12'6"	144 sq. ft	Yes
12	Laundry	4'10" x 9'3"	45 sq. ft	Yes
13	Hall	12'10" x 7'2"	100 sq. ft	Yes

9427 Noble Avenue, North Hills, Los Angeles County, California, United States, 91343, 110

1 Floor 1 - Living Room



Dimensions: 21'5" x 12'3"
Area: 275 sq. ft
Counted as Living Area:
Yes

Heated: Yes
Finished: Yes
Enclosed: Yes
Contiguous:
Yes
Permitted: Yes
Wet Space: No
Addition: No
Conversion: No

2 Floor 1 - Dining Area

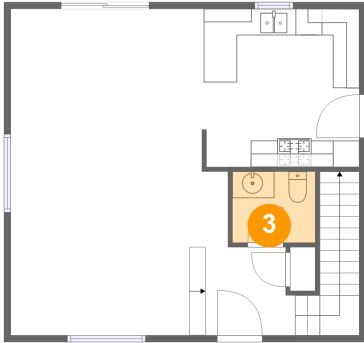


Dimensions: 14'4" x 12'3"
Area: 176 sq. ft
Counted as Living Area:
Yes

Heated: Yes
Finished: Yes
Enclosed: Yes
Contiguous:
Yes
Permitted: Yes
Wet Space: No
Addition: No
Conversion: No

9427 Noble Avenue, North Hills, Los Angeles County, California, United States, 91343, 110

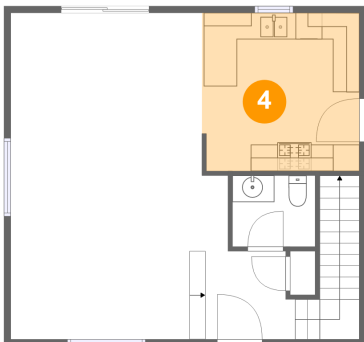
3 Floor 1 - Wc



Dimensions: 6'3" x 5'4"
Area: 33 sq. ft
Counted as Living Area:
Yes

Heated: Yes
Finished: Yes
Enclosed: Yes
Contiguous:
Yes
Permitted: Yes
Wet Space: Yes
Addition: No
Conversion: No

4 Floor 1 - Kitchen



Dimensions: 11'10" x 11'10"
Area: 140 sq. ft
Counted as Living Area:
Yes

Heated: Yes
Finished: Yes
Enclosed: Yes
Contiguous:
Yes
Permitted: Yes
Wet Space: No
Addition: No
Conversion: No

5 Floor 2 - Primary Bedroom

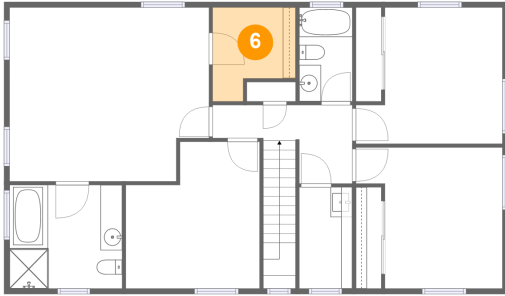


Dimensions: 18'4" x 15'10"
Area: 280 sq. ft
Counted as Living Area:
Yes

Heated: Yes
Finished: Yes
Enclosed: Yes
Contiguous:
Yes
Permitted: Yes
Wet Space: No
Addition: No
Conversion: No

9427 Noble Avenue, North Hills, Los Angeles County, California, United States, 91343, 110

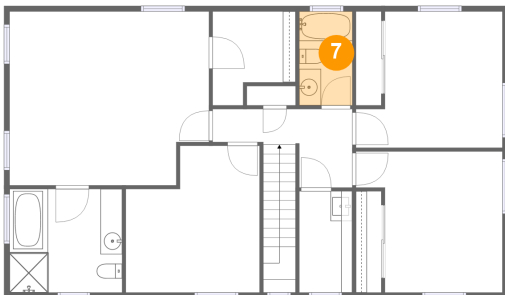
6 Floor 2 - W.i.c.



Dimensions: 7'7" x 8'7"
Area: 55 sq. ft
Counted as Living Area:
Yes

Heated: Yes
Finished: Yes
Enclosed: Yes
Contiguous:
Yes
Permitted: Yes
Wet Space: No
Addition: No
Conversion: No

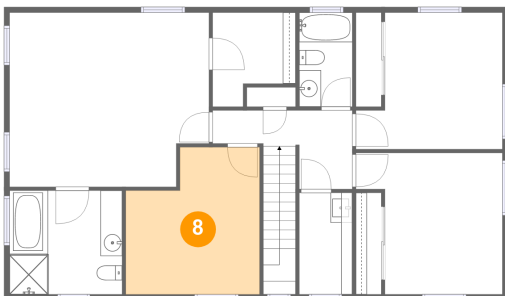
7 Floor 2 - Bath



Dimensions: 4'10" x 8'7"
Area: 42 sq. ft
Counted as Living Area:
Yes

Heated: Yes
Finished: Yes
Enclosed: Yes
Contiguous:
Yes
Permitted: Yes
Wet Space: Yes
Addition: No
Conversion: No

8 Floor 2 - Room

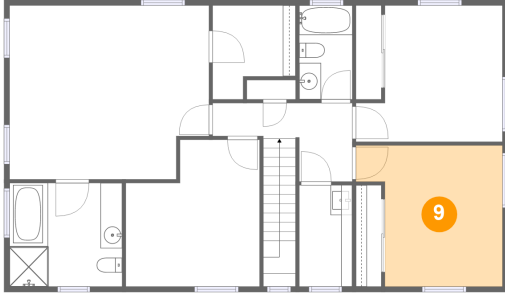


Dimensions: 12'3" x 13'5"
Area: 145 sq. ft
Counted as Living Area:
Yes

Heated: Yes
Finished: Yes
Enclosed: Yes
Contiguous:
Yes
Permitted: Yes
Wet Space: No
Addition: No
Conversion: No

**9427 Noble Avenue, North Hills, Los Angeles
County, California, United States, 91343, 110**

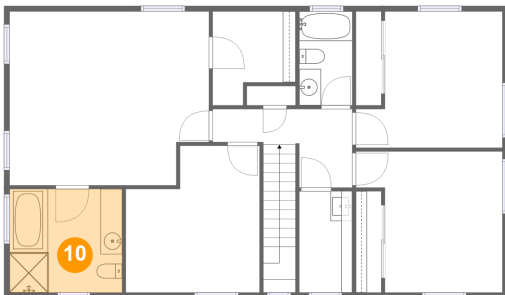
9 Floor 2 - Bedroom



Dimensions: 13'5" x 12'11"
Area: 148 sq. ft
Counted as Living Area:
Yes

Heated: Yes
Finished: Yes
Enclosed: Yes
Contiguous:
Yes
Permitted: Yes
Wet Space: No
Addition: No
Conversion: No

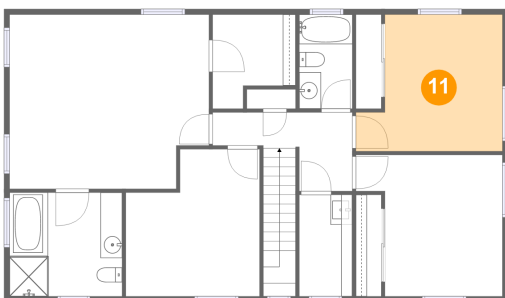
10 Floor 2 - Primary Bath



Dimensions: 10'4" x 9'6"
Area: 98 sq. ft
Counted as Living Area:
Yes

Heated: Yes
Finished: Yes
Enclosed: Yes
Contiguous:
Yes
Permitted: Yes
Wet Space: Yes
Addition: No
Conversion: No

11 Floor 2 - Bedroom

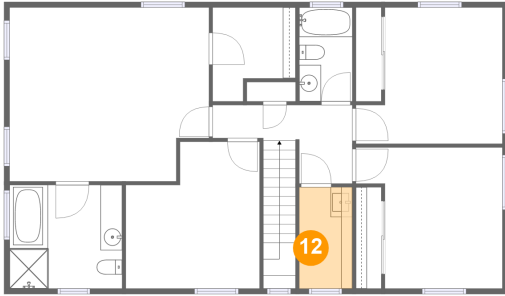


Dimensions: 13'5" x 12'6"
Area: 144 sq. ft
Counted as Living Area:
Yes

Heated: Yes
Finished: Yes
Enclosed: Yes
Contiguous:
Yes
Permitted: Yes
Wet Space: No
Addition: No
Conversion: No

**9427 Noble Avenue, North Hills, Los Angeles
County, California, United States, 91343, 110**

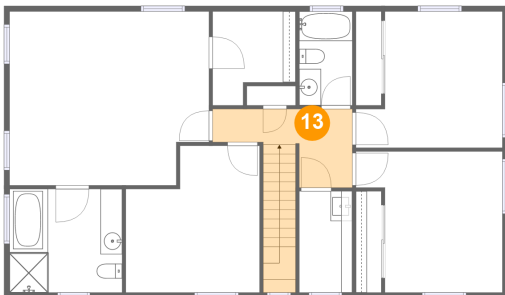
12 Floor 2 - Laundry



Dimensions: 4'10" x 9'3"
Area: 45 sq. ft
Counted as Living Area:
Yes

Heated: Yes
Finished: Yes
Enclosed: Yes
Contiguous:
Yes
Permitted: Yes
Wet Space: No
Addition: No
Conversion: No

13 Floor 2 - Hall



Dimensions: 12'10" x 7'2"
Area: 100 sq. ft
Counted as Living Area:
Yes

Heated: Yes
Finished: Yes
Enclosed: Yes
Contiguous:
Yes
Permitted: Yes
Wet Space: No
Addition: No
Conversion: No