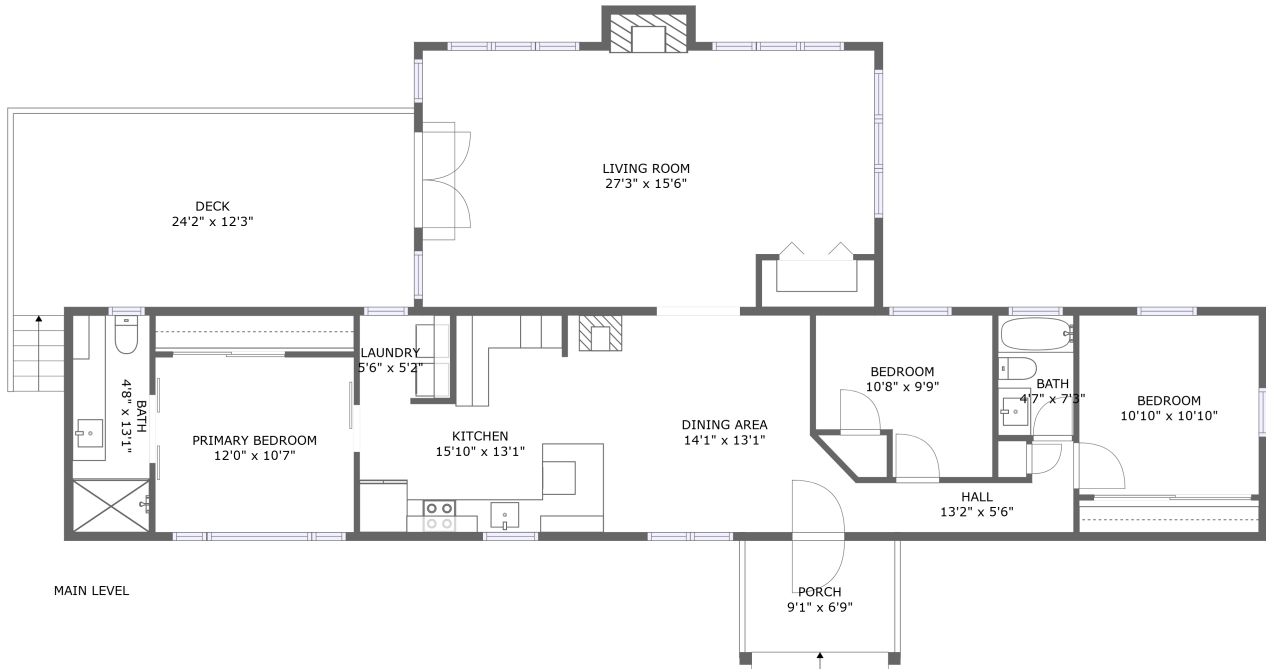


Home report

110 Whisper Knoll Drive, Moneta, Bedford County, Virginia,
United States, 24121



Total Area: 1377 sq. ft

Floor 1: 1377 sq. ft

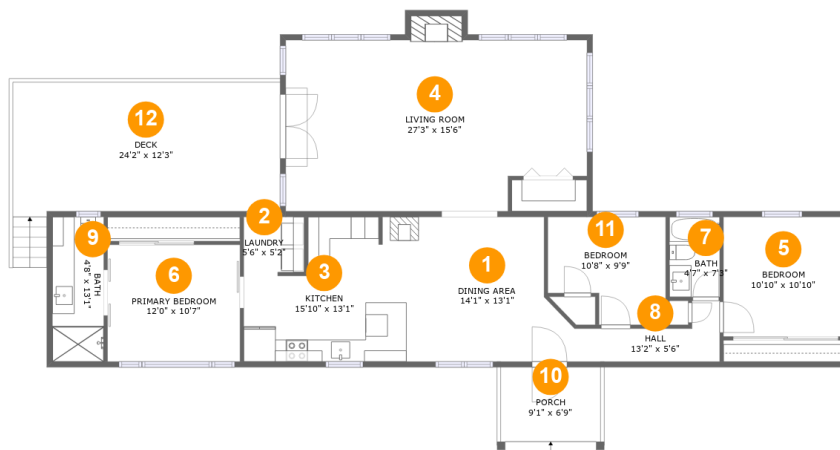
Excluded: Porch 61 sq. ft, Deck 299 sq. ft, Fireplace 13 sq. ft, Walls: 99 sq. ft

Property summary



Home report

110 Whisper Knoll Drive, Moneta, Bedford County, Virginia,
United States, 24121



Room dimensions

Floor 1

Total:1377sqft

Excluded: 373sqft

#		Max Dimensions	sqft	Included
1	Dining Area	14'1" x 13'1"	161 sq. ft	Yes
2	Laundry	5'6" x 5'2"	28 sq. ft	Yes
3	Kitchen	15'10" x 13'1"	176 sq. ft	Yes
4	Living Room	27'3" x 15'6"	410 sq. ft	Yes
5	Bedroom	10'10" x 10'10"	118 sq. ft	Yes
6	Primary Bedroom	12'0" x 10'7"	127 sq. ft	Yes
7	Bath	4'7" x 7'3"	33 sq. ft	Yes
8	Hall	13'2" x 5'6"	46 sq. ft	Yes
9	Bath	4'8" x 13'1"	61 sq. ft	Yes
10	Porch	9'1" x 6'9"	61 sq. ft	No
11	Bedroom	10'8" x 9'9"	91 sq. ft	Yes

Home report

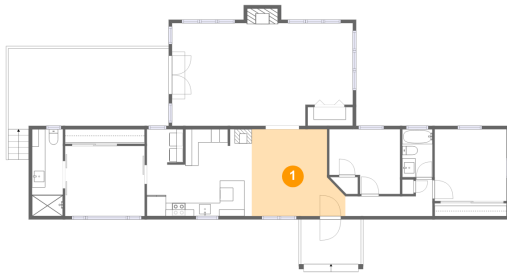
**110 Whisper Knoll Drive, Moneta, Bedford County, Virginia,
United States, 24121**

#		Max Dimensions	sqft	Included
12	Deck	24'2" x 12'3"	299 sq. ft	No

Home report

110 Whisper Knoll Drive, Moneta, Bedford County, Virginia,
United States, 24121

1 Floor 1 - Dining Area



Max Dimensions: 14'1" x
13'1"
Calculated Area: 161 sq. ft
Included: Yes

Heated: Yes
Finished: Yes
Enclosed: Yes
Contiguous:
Yes
Permitted: Yes
Wet space: No
Addition: No
Conversion: No

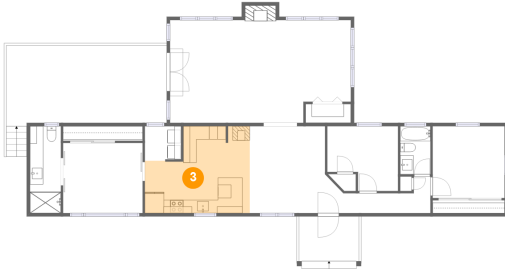
2 Floor 1 - Laundry



Max Dimensions: 5'6" x 5'2"
Calculated Area: 28 sq. ft
Included: Yes

Heated: Yes
Finished: Yes
Enclosed: Yes
Contiguous: Yes
Permitted: Yes
Wet space: No
Addition: No
Conversion: No

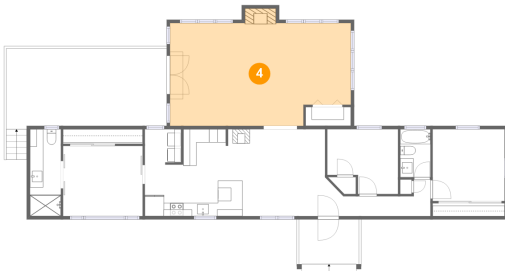
3 Floor 1 - Kitchen



Max Dimensions: 15'10" x 13'1"
Calculated Area: 176 sq. ft
Included: Yes

Heated: Yes
Finished: Yes
Enclosed: Yes
Contiguous: Yes
Permitted: Yes
Wet space: No
Addition: No
Conversion: No

4 Floor 1 - Living Room



Max Dimensions: 27'3" x 15'6"
Calculated Area: 410 sq. ft
Included: Yes

Heated: Yes
Finished: Yes
Enclosed: Yes
Contiguous: Yes
Permitted: Yes
Wet space: No
Addition: No
Conversion: No

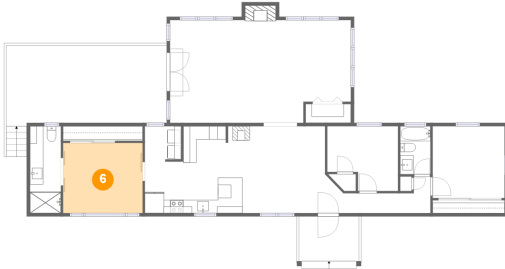
5 Floor 1 - Bedroom



Max Dimensions: 10'10" x 10'10"
Calculated Area: 118 sq. ft
Included: Yes

Heated: Yes
Finished: Yes
Enclosed: Yes
Contiguous: Yes
Permitted: Yes
Wet space: No
Addition: No
Conversion: No

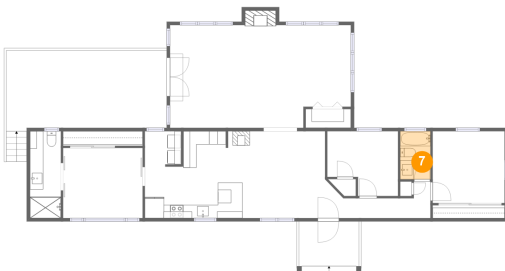
6 Floor 1 - Primary Bedroom



Max Dimensions: 12'0" x 10'7"
Calculated Area: 127 sq. ft
Included: Yes

Heated: Yes
Finished: Yes
Enclosed: Yes
Contiguous: Yes
Permitted: Yes
Wet space: No
Addition: No
Conversion: No

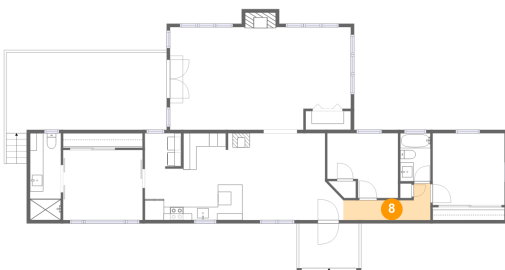
7 Floor 1 - Bath



Max Dimensions: 4'7" x 7'3"
Calculated Area: 33 sq. ft
Included: Yes

Heated: Yes
Finished: Yes
Enclosed: Yes
Contiguous: Yes
Permitted: Yes
Wet space: Yes
Addition: No
Conversion: No

8 Floor 1 - Hall



Max Dimensions: 13'2" x 5'6"
Calculated Area: 46 sq. ft
Included: Yes

Heated: Yes
Finished: Yes
Enclosed: Yes
Contiguous: Yes
Permitted: Yes
Wet space: No
Addition: No
Conversion: No

9 Floor 1 - Bath



Max Dimensions: 4'8" x 13'1"
Calculated Area: 61 sq. ft
Included: Yes

Heated: Yes
Finished: Yes
Enclosed: Yes
Contiguous: Yes
Permitted: Yes
Wet space: Yes
Addition: No
Conversion: No

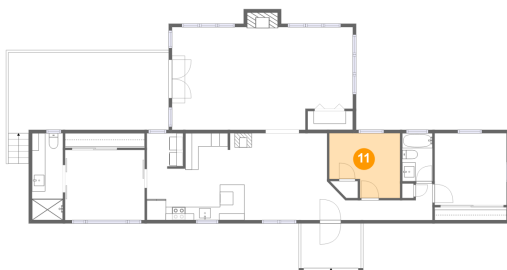
10 Floor 1 - Porch



Max Dimensions: 9'1" x 6'9"
Calculated Area: 61 sq. ft
Included: No

Heated: No
Finished: Yes
Enclosed: No
Contiguous: Yes
Permitted: Yes
Wet space: No
Addition: No
Conversion: No

11 Floor 1 - Bedroom



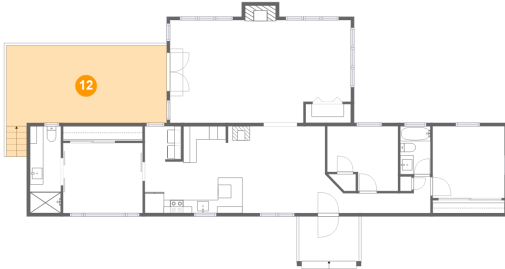
Max Dimensions: 10'8" x 9'9"
Calculated Area: 91 sq. ft
Included: Yes

Heated: Yes
Finished: Yes
Enclosed: Yes
Contiguous: Yes
Permitted: Yes
Wet space: No
Addition: No
Conversion: No

Home report

110 Whisper Knoll Drive, Moneta, Bedford County, Virginia,
United States, 24121

12 Floor 1 - Deck



Max Dimensions: 24'2" x
12'3"

Calculated Area: 299 sq. ft
Included: No

Heated: No
Finished: Yes
Enclosed: No
Contiguous:
Yes
Permitted: Yes
Wet space: No
Addition: No
Conversion: No