



Home report


895 Christy Road, Hermitage, Mercer County, Pennsylvania,
United States, 16148




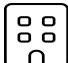
Property summary


 **1** Garages


 **3** Bedrooms

 **2** Bathrooms

 **0** Half baths

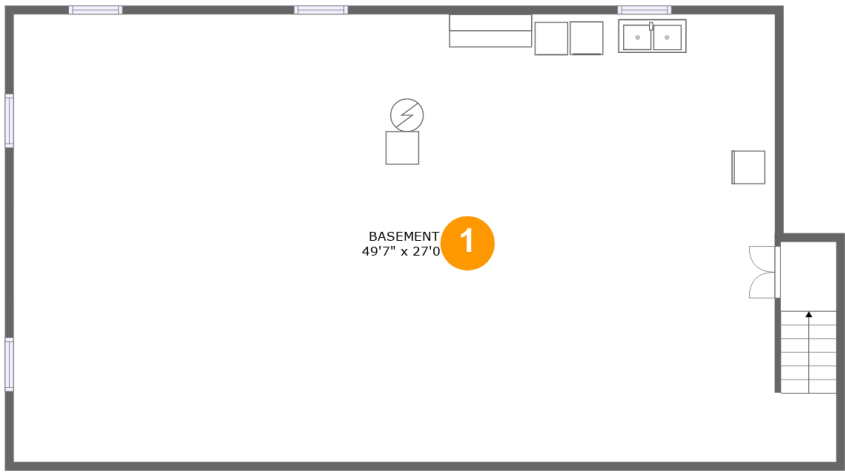
 **2** Floors

 **1,718** Gross living area sqft

 **3,926** Total sqft

Home report

895 Christy Road, Hermitage, Mercer County, Pennsylvania,
United States, 16148



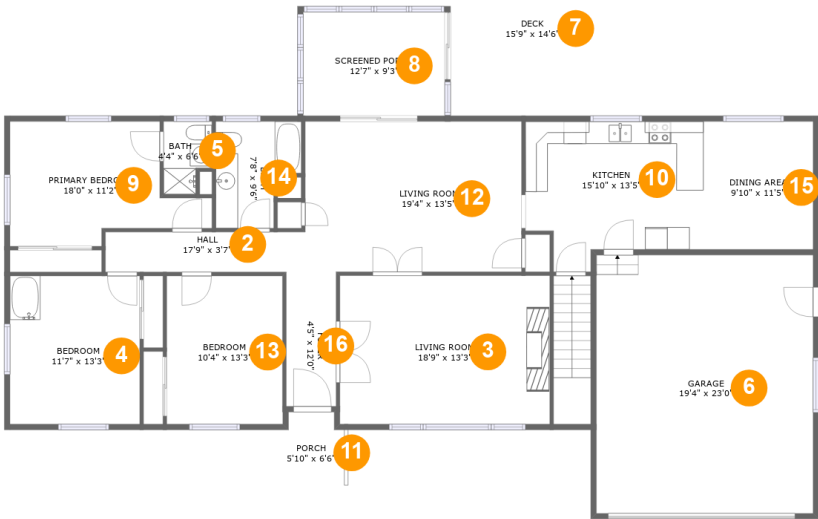
Room dimensions

Floor 1 Total sqft: 1366 Living area: 0

#		Dimensions	sqft	Counted as living area
1	Basement	49'7" x 27'0"	1286 sq. ft	No

Home report

895 Christy Road, Hermitage, Mercer County, Pennsylvania,
United States, 16148



Room dimensions

Floor 2 Total sqft: 2560 Living area: 1718

#		Dimensions	sqft	Counted as living area
2	Hall	17'9" x 3'7"	63 sq. ft	Yes
3	Living Room	18'9" x 13'3"	248 sq. ft	Yes
4	Bedroom	11'7" x 13'3"	153 sq. ft	Yes
5	Bath	4'4" x 6'6"	25 sq. ft	Yes
6	Garage	19'4" x 23'0"	446 sq. ft	No
7	Deck	15'9" x 14'6"	203 sq. ft	No
8	Screened Porch	12'7" x 9'3"	117 sq. ft	No
9	Primary Bedroom	18'0" x 11'2"	153 sq. ft	Yes
10	Kitchen	15'10" x 13'5"	184 sq. ft	Yes
11	Porch	5'10" x 6'6"	35 sq. ft	No
12	Living Room	19'4" x 13'5"	259 sq. ft	Yes

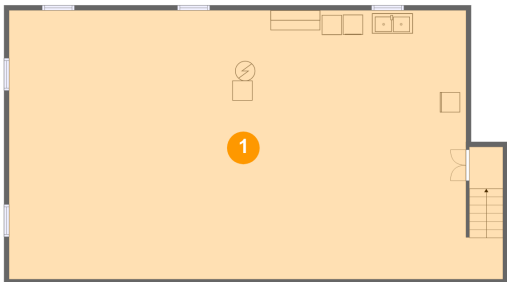
Home report

**895 Christy Road, Hermitage, Mercer County, Pennsylvania,
United States, 16148**

#		Dimensions	sqft	Counted as living area
13	Bedroom	10'4" x 13'3"	137 sq. ft	Yes
14	Bath	7'8" x 9'6"	61 sq. ft	Yes
15	Dining Area	9'10" x 11'5"	112 sq. ft	Yes
16	Foyer	4'5" x 12'0"	53 sq. ft	Yes

895 Christy Road, Hermitage, Mercer County, Pennsylvania,
United States, 16148

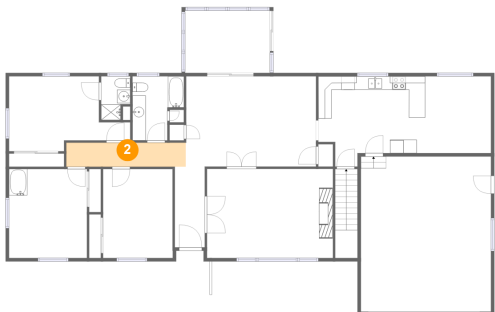
1 Floor 1 - Basement



Dimensions: 49'7" x 27'0"
Area: 1286 sq. ft
Counted as living area: No

Heated: Yes
Finished: No
Enclosed: Yes
Contiguous: Yes
Permitted: Yes
Wet space: No
Addition: No
Conversion: No

2 Floor 2 - Hall



Dimensions: 17'9" x 3'7"
Area: 63 sq. ft
Counted as living area: Yes

Heated: Yes
Finished: Yes
Enclosed: Yes
Contiguous: Yes
Permitted: Yes
Wet space: No
Addition: No
Conversion: No

895 Christy Road, Hermitage, Mercer County, Pennsylvania,
United States, 16148

3 Floor 2 - Living Room



Dimensions: 18'9" x 13'3"
Area: 248 sq. ft
Counted as living area: Yes

Heated: Yes
Finished: Yes
Enclosed: Yes
Contiguous: Yes
Permitted: Yes
Wet space: No
Addition: No
Conversion: No

4 Floor 2 - Bedroom



Dimensions: 11'7" x 13'3"
Area: 153 sq. ft
Counted as living area: Yes

Heated: Yes
Finished: Yes
Enclosed: Yes
Contiguous: Yes
Permitted: Yes
Wet space: No
Addition: No
Conversion: No

5 Floor 2 - Bath



Dimensions: 4'4" x 6'6"
Area: 25 sq. ft
Counted as living area: Yes

Heated: Yes
Finished: Yes
Enclosed: Yes
Contiguous: Yes
Permitted: Yes
Wet space: Yes
Addition: No
Conversion: No

895 Christy Road, Hermitage, Mercer County, Pennsylvania,
United States, 16148

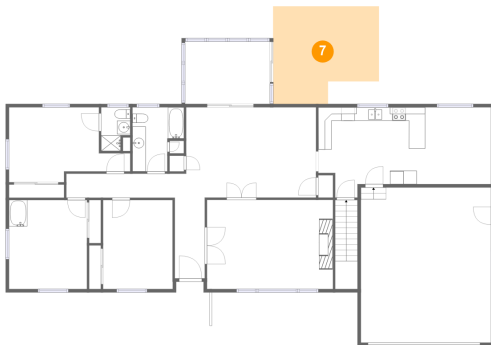
6 Floor 2 - Garage



Dimensions: 19'4" x 23'0"
Area: 446 sq. ft
Counted as living area: No

Heated: No
Finished: No
Enclosed: Yes
Contiguous: Yes
Permitted: Yes
Wet space: No
Addition: No
Conversion: No

7 Floor 2 - Deck



Dimensions: 15'9" x 14'6"
Area: 203 sq. ft
Counted as living area: No

Heated: No
Finished: Yes
Enclosed: No
Contiguous: Yes
Permitted: Yes
Wet space: No
Addition: No
Conversion: No

8 Floor 2 - Screened Porch



Dimensions: 12'7" x 9'3"
Area: 117 sq. ft
Counted as living area: No

Heated: No
Finished: Yes
Enclosed: No
Contiguous: Yes
Permitted: Yes
Wet space: No
Addition: No
Conversion: No

895 Christy Road, Hermitage, Mercer County, Pennsylvania,
United States, 16148

9 Floor 2 - Primary Bedroom



Dimensions: 18'0" x 11'2"
Area: 153 sq. ft
Counted as living area: Yes

Heated: Yes
Finished: Yes
Enclosed: Yes
Contiguous: Yes
Permitted: Yes
Wet space: No
Addition: No
Conversion: No

10 Floor 2 - Kitchen



Dimensions: 15'10" x 13'5"
Area: 184 sq. ft
Counted as living area: Yes

Heated: Yes
Finished: Yes
Enclosed: Yes
Contiguous: Yes
Permitted: Yes
Wet space: No
Addition: No
Conversion: No

11 Floor 2 - Porch



Dimensions: 5'10" x 6'6"
Area: 35 sq. ft
Counted as living area: No

Heated: No
Finished: Yes
Enclosed: No
Contiguous: Yes
Permitted: Yes
Wet space: No
Addition: No
Conversion: No

Home report

895 Christy Road, Hermitage, Mercer County, Pennsylvania,
United States, 16148

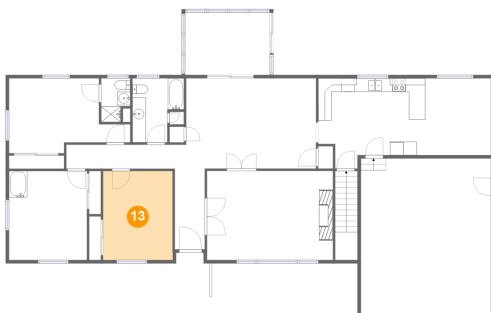
12 Floor 2 - Living Room



Dimensions: 19'4" x 13'5"
Area: 259 sq. ft
Counted as living area: Yes

Heated: Yes
Finished: Yes
Enclosed: Yes
Contiguous: Yes
Permitted: Yes
Wet space: No
Addition: No
Conversion: No

13 Floor 2 - Bedroom



Dimensions: 10'4" x 13'3"
Area: 137 sq. ft
Counted as living area: Yes

Heated: Yes
Finished: Yes
Enclosed: Yes
Contiguous: Yes
Permitted: Yes
Wet space: No
Addition: No
Conversion: No

14 Floor 2 - Bath



Dimensions: 7'8" x 9'6"
Area: 61 sq. ft
Counted as living area: Yes

Heated: Yes
Finished: Yes
Enclosed: Yes
Contiguous: Yes
Permitted: Yes
Wet space: Yes
Addition: No
Conversion: No

895 Christy Road, Hermitage, Mercer County, Pennsylvania,
United States, 16148

15 Floor 2 - Dining Area



Dimensions: 9'10" x 11'5"
Area: 112 sq. ft
Counted as living area: Yes

Heated: Yes
Finished: Yes
Enclosed: Yes
Contiguous: Yes
Permitted: Yes
Wet space: No
Addition: No
Conversion: No

16 Floor 2 - Foyer



Dimensions: 4'5" x 12'0"
Area: 53 sq. ft
Counted as living area: Yes

Heated: Yes
Finished: Yes
Enclosed: Yes
Contiguous: Yes
Permitted: Yes
Wet space: No
Addition: No
Conversion: No