




**6509 Castle Pines Road, Mira Vista, Fort Worth,  
Tarrant County, Texas, United States, 76132**




**Property Summary**


 **1** garages


 **4** bedrooms

 **3** bathrooms

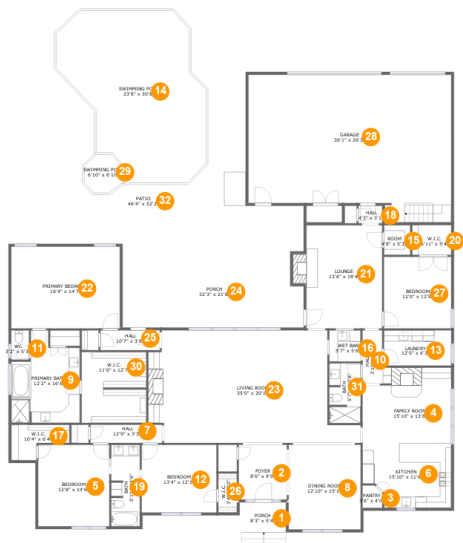
 **0** half baths

 **1** floors

 **3,494** Gross Living Area sqft

 **5,984** total sqft

**6509 Castle Pines Road, Mira Vista, Fort Worth,  
Tarrant County, Texas, United States, 76132**



**Room Dimensions**

**Floor 1** **Total sqft: 5984** **Living area: 3494**

#	Room name	Dimensions	Area (sqft)	Counted as Living Area
1	Porch	8'3" x 5'4"	44 sq. ft	No
2	Foyer	8'6" x 9'9"	83 sq. ft	Yes
3	Pantry	3'6" x 4'0"	13 sq. ft	Yes
4	Family Room	15'10" x 13'6"	200 sq. ft	Yes
5	Bedroom	12'8" x 14'6"	184 sq. ft	Yes
6	Kitchen	15'10" x 11'6"	166 sq. ft	Yes
7	Hall	12'9" x 3'3"	42 sq. ft	Yes
8	Dining Room	12'10" x 15'1"	193 sq. ft	Yes
9	Primary Bath	12'2" x 16'6"	163 sq. ft	Yes
10	Hall	3'10" x 9'6"	34 sq. ft	Yes
11	Wc	3'2" x 5'3"	16 sq. ft	Yes

**6509 Castle Pines Road, Mira Vista, Fort Worth,  
Tarrant County, Texas, United States, 76132**

#	Room name	Dimensions	Area (sqft)	Counted as Living Area
12	Bedroom	13'4" x 12'1"	161 sq. ft	Yes
13	Laundry	12'0" x 6'3"	75 sq. ft	Yes
14	Swimming Pool	23'8" x 30'8"	618 sq. ft	No
15	Room	4'8" x 5'3"	25 sq. ft	Yes
16	Wet Bar	5'7" x 5'6"	33 sq. ft	Yes
17	W.i.c.	10'4" x 6'4"	47 sq. ft	Yes
18	Hall	4'3" x 3'1"	13 sq. ft	Yes
19	Bath	5'1" x 14'6"	72 sq. ft	Yes
20	W.i.c.	6'11" x 5'4"	37 sq. ft	Yes
21	Lounge	13'6" x 18'4"	260 sq. ft	Yes
22	Primary Bedroom	19'4" x 14'7"	281 sq. ft	Yes
23	Living Room	35'0" x 20'1"	639 sq. ft	Yes
24	Porch	32'3" x 21'8"	424 sq. ft	No
25	Hall	10'7" x 3'6"	37 sq. ft	Yes
26	W.i.c.	3'4" x 7'0"	23 sq. ft	Yes
27	Bedroom	12'0" x 12'9"	153 sq. ft	Yes
28	Garage	36'1" x 26'3"	865 sq. ft	No
29	Swimming Pool	6'10" x 6'10"	38 sq. ft	No
30	W.i.c.	11'6" x 12'7"	143 sq. ft	Yes
31	Bath	5'7" x 10'8"	58 sq. ft	Yes
32	Patio	46'4" x 52'2"	1728 sq. ft	No

# 6509 Castle Pines Road, Mira Vista, Fort Worth, Tarrant County, Texas, United States, 76132

## 1 Floor 1 - Porch



Dimensions: 8'3" x 5'4"  
Area: 44 sq. ft  
Counted as Living Area: No

Heated: No  
Finished: Yes  
Enclosed: No  
Contiguous: Yes  
Permitted: Yes  
Wet Space: No  
Addition: No  
Conversion: No

## 2 Floor 1 - Foyer



Dimensions: 8'6" x 9'9"  
Area: 83 sq. ft  
Counted as Living Area:  
Yes

Heated: Yes  
Finished: Yes  
Enclosed: Yes  
Contiguous:  
Yes  
Permitted: Yes  
Wet Space: No  
Addition: No  
Conversion: No

**6509 Castle Pines Road, Mira Vista, Fort Worth,  
Tarrant County, Texas, United States, 76132**

**3 Floor 1 - Pantry**



Dimensions: 3'6" x 4'0"  
Area: 13 sq. ft  
Counted as Living Area:  
Yes

Heated: Yes  
Finished: Yes  
Enclosed: Yes  
Contiguous:  
Yes  
Permitted: Yes  
Wet Space: No  
Addition: No  
Conversion: No

**4 Floor 1 - Family Room**



Dimensions: 15'10" x 13'6"  
Area: 200 sq. ft  
Counted as Living Area:  
Yes

Heated: Yes  
Finished: Yes  
Enclosed: Yes  
Contiguous:  
Yes  
Permitted: Yes  
Wet Space: No  
Addition: No  
Conversion: No

**5 Floor 1 - Bedroom**



Dimensions: 12'8" x 14'6"  
Area: 184 sq. ft  
Counted as Living Area:  
Yes

Heated: Yes  
Finished: Yes  
Enclosed: Yes  
Contiguous:  
Yes  
Permitted: Yes  
Wet Space: No  
Addition: No  
Conversion: No

**6509 Castle Pines Road, Mira Vista, Fort Worth,  
Tarrant County, Texas, United States, 76132**

**6 Floor 1 - Kitchen**



Dimensions: 15'10" x 11'6"  
Area: 166 sq. ft  
Counted as Living Area:  
Yes

Heated: Yes  
Finished: Yes  
Enclosed: Yes  
Contiguous:  
Yes  
Permitted: Yes  
Wet Space: No  
Addition: No  
Conversion: No

**7 Floor 1 - Hall**



Dimensions: 12'9" x 3'3"  
Area: 42 sq. ft  
Counted as Living Area:  
Yes

Heated: Yes  
Finished: Yes  
Enclosed: Yes  
Contiguous:  
Yes  
Permitted: Yes  
Wet Space: No  
Addition: No  
Conversion: No

**8 Floor 1 - Dining Room**



Dimensions: 12'10" x 15'1"  
Area: 193 sq. ft  
Counted as Living Area:  
Yes

Heated: Yes  
Finished: Yes  
Enclosed: Yes  
Contiguous:  
Yes  
Permitted: Yes  
Wet Space: No  
Addition: No  
Conversion: No

**6509 Castle Pines Road, Mira Vista, Fort Worth,  
Tarrant County, Texas, United States, 76132****9 Floor 1 - Primary Bath**

Dimensions: 12'2" x 16'6"  
Area: 163 sq. ft  
Counted as Living Area:  
Yes

Heated: Yes  
Finished: Yes  
Enclosed: Yes  
Contiguous:  
Yes  
Permitted: Yes  
Wet Space: Yes  
Addition: No  
Conversion: No

**10 Floor 1 - Hall**

Dimensions: 3'10" x 9'6"  
Area: 34 sq. ft  
Counted as Living Area:  
Yes

Heated: Yes  
Finished: Yes  
Enclosed: Yes  
Contiguous:  
Yes  
Permitted: Yes  
Wet Space: No  
Addition: No  
Conversion: No

**11 Floor 1 - Wc**

Dimensions: 3'2" x 5'3"  
Area: 16 sq. ft  
Counted as Living Area:  
Yes

Heated: Yes  
Finished: Yes  
Enclosed: Yes  
Contiguous:  
Yes  
Permitted: Yes  
Wet Space: Yes  
Addition: No  
Conversion: No

**6509 Castle Pines Road, Mira Vista, Fort Worth,  
Tarrant County, Texas, United States, 76132****12 Floor 1 - Bedroom**

Dimensions: 13'4" x 12'1"  
Area: 161 sq. ft  
Counted as Living Area:  
Yes

Heated: Yes  
Finished: Yes  
Enclosed: Yes  
Contiguous:  
Yes  
Permitted: Yes  
Wet Space: No  
Addition: No  
Conversion: No

**13 Floor 1 - Laundry**

Dimensions: 12'0" x 6'3"  
Area: 75 sq. ft  
Counted as Living Area:  
Yes

Heated: Yes  
Finished: Yes  
Enclosed: Yes  
Contiguous:  
Yes  
Permitted: Yes  
Wet Space: No  
Addition: No  
Conversion: No

**14 Floor 1 - Swimming Pool**

Dimensions: 23'8" x 30'8"  
Area: 618 sq. ft  
Counted as Living Area: No

Heated: No  
Finished: No  
Enclosed: No  
Contiguous: Yes  
Permitted: No  
Wet Space: No  
Addition: No  
Conversion: No



**6509 Castle Pines Road, Mira Vista, Fort Worth,  
Tarrant County, Texas, United States, 76132****15 Floor 1 - Room**

Dimensions: 4'8" x 5'3"  
Area: 25 sq. ft  
Counted as Living Area:  
Yes

Heated: Yes  
Finished: Yes  
Enclosed: Yes  
Contiguous:  
Yes  
Permitted: Yes  
Wet Space: No  
Addition: No  
Conversion: No

**16 Floor 1 - Wet Bar**

Dimensions: 5'7" x 5'6"  
Area: 33 sq. ft  
Counted as Living Area:  
Yes

Heated: Yes  
Finished: Yes  
Enclosed: Yes  
Contiguous:  
Yes  
Permitted: Yes  
Wet Space: No  
Addition: No  
Conversion: No

**17 Floor 1 - W.i.c.**

Dimensions: 10'4" x 6'4"  
Area: 47 sq. ft  
Counted as Living Area:  
Yes

Heated: Yes  
Finished: Yes  
Enclosed: Yes  
Contiguous:  
Yes  
Permitted: Yes  
Wet Space: No  
Addition: No  
Conversion: No

**6509 Castle Pines Road, Mira Vista, Fort Worth,  
Tarrant County, Texas, United States, 76132****18 Floor 1 - Hall**

Dimensions: 4'3" x 3'1"  
Area: 13 sq. ft  
Counted as Living Area:  
Yes

Heated: Yes  
Finished: Yes  
Enclosed: Yes  
Contiguous:  
Yes  
Permitted: Yes  
Wet Space: No  
Addition: No  
Conversion: No

**19 Floor 1 - Bath**

Dimensions: 5'1" x 14'6"  
Area: 72 sq. ft  
Counted as Living Area:  
Yes

Heated: Yes  
Finished: Yes  
Enclosed: Yes  
Contiguous:  
Yes  
Permitted: Yes  
Wet Space: Yes  
Addition: No  
Conversion: No

**20 Floor 1 - W.i.c.**

Dimensions: 6'11" x 5'4"  
Area: 37 sq. ft  
Counted as Living Area:  
Yes

Heated: Yes  
Finished: Yes  
Enclosed: Yes  
Contiguous:  
Yes  
Permitted: Yes  
Wet Space: No  
Addition: No  
Conversion: No

# 6509 Castle Pines Road, Mira Vista, Fort Worth, Tarrant County, Texas, United States, 76132

## 21 Floor 1 - Lounge



Dimensions: 13'6" x 18'4"  
Area: 260 sq. ft  
Counted as Living Area:  
Yes

Heated: Yes  
Finished: Yes  
Enclosed: Yes  
Contiguous:  
Yes  
Permitted: Yes  
Wet Space: No  
Addition: No  
Conversion: No

## 22 Floor 1 - Primary Bedroom



Dimensions: 19'4" x 14'7"  
Area: 281 sq. ft  
Counted as Living Area:  
Yes

Heated: Yes  
Finished: Yes  
Enclosed: Yes  
Contiguous:  
Yes  
Permitted: Yes  
Wet Space: No  
Addition: No  
Conversion: No

## 23 Floor 1 - Living Room



Dimensions: 35'0" x 20'1"  
Area: 639 sq. ft  
Counted as Living Area:  
Yes

Heated: Yes  
Finished: Yes  
Enclosed: Yes  
Contiguous:  
Yes  
Permitted: Yes  
Wet Space: No  
Addition: No  
Conversion: No

**6509 Castle Pines Road, Mira Vista, Fort Worth,  
Tarrant County, Texas, United States, 76132****24 Floor 1 - Porch**

Dimensions: 32'3" x 21'8"  
Area: 424 sq. ft  
Counted as Living Area: No

Heated: No  
Finished: Yes  
Enclosed: No  
Contiguous: Yes  
Permitted: Yes  
Wet Space: No  
Addition: No  
Conversion: No

**25 Floor 1 - Hall**

Dimensions: 10'7" x 3'6"  
Area: 37 sq. ft  
Counted as Living Area: Yes

Heated: Yes  
Finished: Yes  
Enclosed: Yes  
Contiguous: Yes  
Permitted: Yes  
Wet Space: No  
Addition: No  
Conversion: No

**26 Floor 1 - W.i.c.**

Dimensions: 3'4" x 7'0"  
Area: 23 sq. ft  
Counted as Living Area: Yes

Heated: Yes  
Finished: Yes  
Enclosed: Yes  
Contiguous: Yes  
Permitted: Yes  
Wet Space: No  
Addition: No  
Conversion: No

# 6509 Castle Pines Road, Mira Vista, Fort Worth, Tarrant County, Texas, United States, 76132

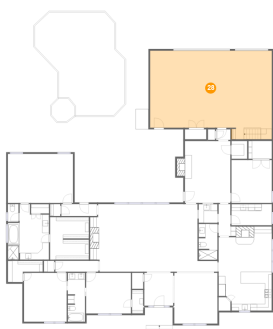
## 27 Floor 1 - Bedroom



Dimensions: 12'0" x 12'9"  
Area: 153 sq. ft  
Counted as Living Area:  
Yes

Heated: Yes  
Finished: Yes  
Enclosed: Yes  
Contiguous:  
Yes  
Permitted: Yes  
Wet Space: No  
Addition: No  
Conversion: No

## 28 Floor 1 - Garage



Dimensions: 36'1" x 26'3"  
Area: 865 sq. ft  
Counted as Living Area: No

Heated: No  
Finished: No  
Enclosed: Yes  
Contiguous: Yes  
Permitted: Yes  
Wet Space: No  
Addition: No  
Conversion: No

## 29 Floor 1 - Swimming Pool



Dimensions: 6'10" x 6'10"  
Area: 38 sq. ft  
Counted as Living Area: No

Heated: No  
Finished: No  
Enclosed: No  
Contiguous: Yes  
Permitted: No  
Wet Space: No  
Addition: No  
Conversion: No

**6509 Castle Pines Road, Mira Vista, Fort Worth,  
Tarrant County, Texas, United States, 76132****30 Floor 1 - W.i.c.**

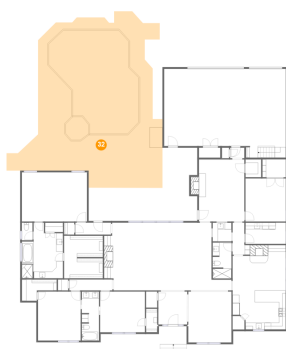
Dimensions: 11'6" x 12'7"  
Area: 143 sq. ft  
Counted as Living Area:  
Yes

Heated: Yes  
Finished: Yes  
Enclosed: Yes  
Contiguous:  
Yes  
Permitted: Yes  
Wet Space: No  
Addition: No  
Conversion: No

**31 Floor 1 - Bath**

Dimensions: 5'7" x 10'8"  
Area: 58 sq. ft  
Counted as Living Area:  
Yes

Heated: Yes  
Finished: Yes  
Enclosed: Yes  
Contiguous:  
Yes  
Permitted: Yes  
Wet Space: Yes  
Addition: No  
Conversion: No

**32 Floor 1 - Patio**

Dimensions: 46'4" x 52'2"  
Area: 1728 sq. ft  
Counted as Living Area: No

Heated: No  
Finished: Yes  
Enclosed: No  
Contiguous: Yes  
Permitted: Yes  
Wet Space: No  
Addition: No  
Conversion: No