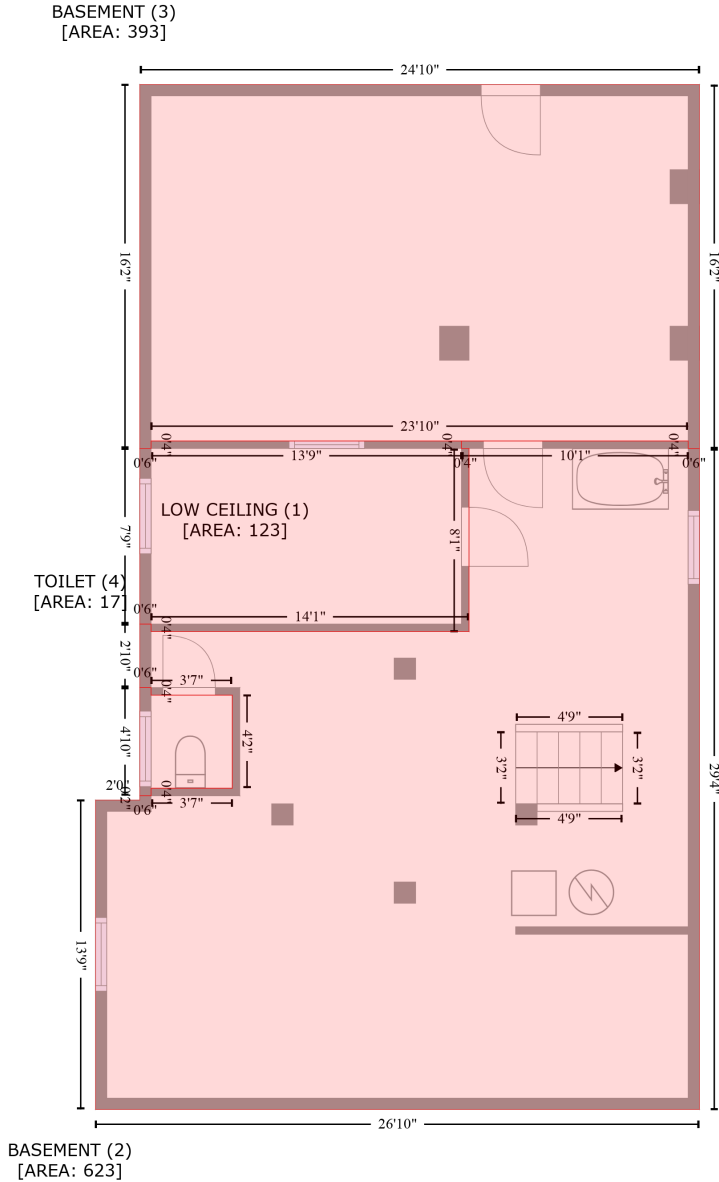


2059 Alta Ave, Louisville, KY, US

Gross Living Area: 1820 sq. ft



Space	Area (sq. ft)	Calculation <small>Coordinate Polygon Area Algorithm using inches</small>
LOW CEILING (Non-living area)	123	$-\left((316.3 + 316.3) * (120.7 - 124.7) + (316.3 + 320.3) * (124.7 - 124.7) + (320.3 + 320.3) * (124.7 - 222.2) + (320.3 + 151.1) * (222.2 - 222.2) + (151.1 + 151.1) * (222.2 - 218.2) + (151.1 + 145.1) * (218.2 - 218.2) + (145.1 + 145.1) * (218.2 - 124.7) + (145.1 + 151.1) * (124.7 - 124.7) + (151.1 + 151.1) * (124.7 - 120.7) + (151.1 + 316.3) * (120.7 - 120.7)\right) * 0.5 * 0.00694$
BASEMENT (Non-living area)	623	$-\left((437 + 437) * (120.7 - 124.7) + (437 + 443) * (124.7 - 124.7) + (443 + 443) * (124.7 - 476.6) + (443 + 121.5) * (476.6 - 476.6) + (121.5 + 121.5) * (476.6 - 311.9) + (121.5 + 145.1) * (311.9 - \right.$

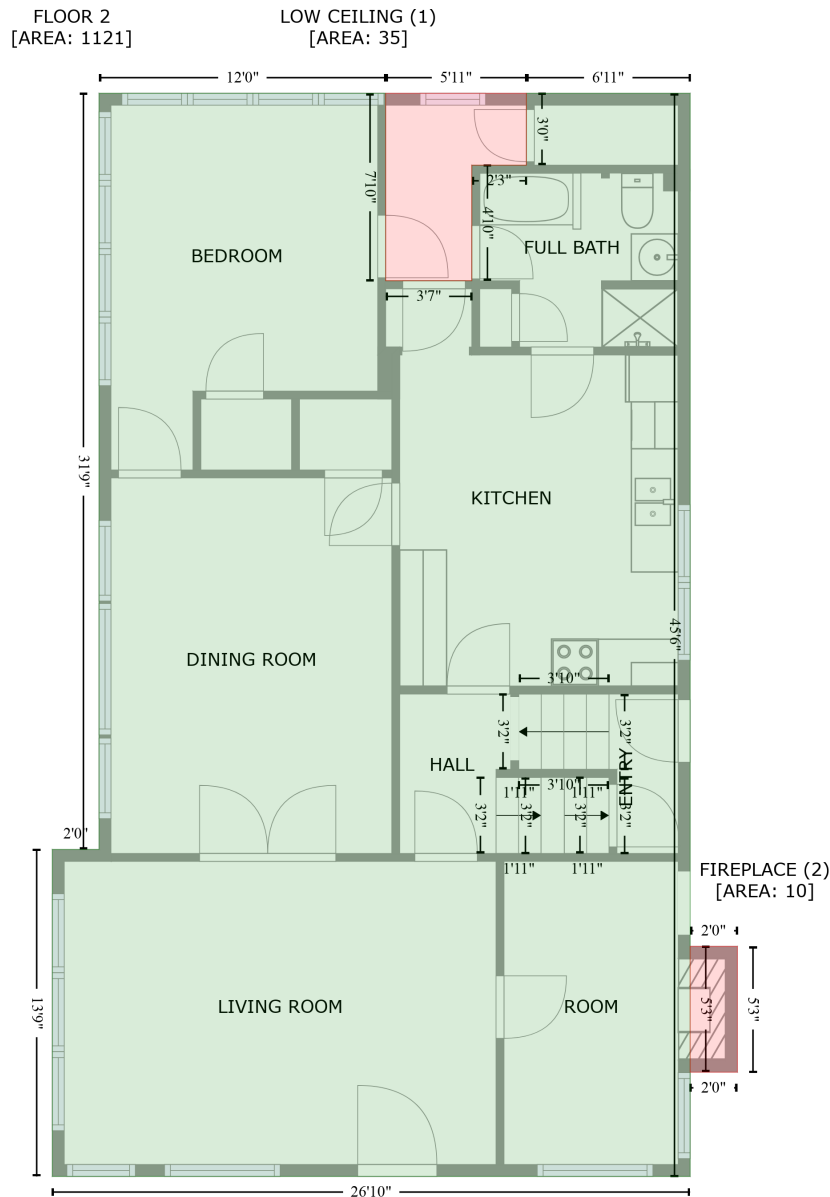
2059 Alta Ave, Louisville, KY, US

Gross Living Area: 1820 sq. ft

Space	Area (sq. ft)	Calculation <small>Coordinate Polygon Area Algorithm using inches</small>
		$311.9 + (145.1 + 145.1) * (311.9 - 309.6) + (145.1 + 151.1) * (309.6 - 309.6) + (151.1 + 151.1) * (309.6 - 305.6) + (151.1 + 194.3) * (305.6 - 305.6) + (194.3 + 194.3) * (305.6 - 256) + (194.3 + 151.1) * (256 - 256) + (151.1 + 151.1) * (256 - 252) + (151.1 + 145.1) * (252 - 252) + (145.1 + 145.1) * (252 - 218.2) + (145.1 + 151.1) * (218.2 - 218.2) + (151.1 + 151.1) * (218.2 - 222.2) + (151.1 + 320.3) * (222.2 - 222.2) + (320.3 + 320.3) * (222.2 - 124.7) + (320.3 + 316.3) * (124.7 - 124.7) + (316.3 + 316.3) * (124.7 - 120.7) + (316.3 + 437) * (120.7 - 120.7) * 0.5 * 0.00694$
BASEMENT (Non-living area)	393	$-((443 + 443) * (-69.1 - 124.7) + (443 + 437) * (124.7 - 124.7) + (437 + 437) * (124.7 - 120.7) + (437 + 151.1) * (120.7 - 120.7) + (151.1 + 151.1) * (120.7 - 124.7) + (151.1 + 145.1) * (124.7 - 124.7) + (145.1 + 145.1) * (124.7 - -69.1) + (145.1 + 443) * (-69.1 - -69.1)) * 0.5 * 0.00694$
TOILET (Non-living area)	17	$-((151.1 + 151.1) * (252 - 256) + (151.1 + 194.3) * (256 - 256) + (194.3 + 194.3) * (256 - 305.6) + (194.3 + 151.1) * (305.6 - 305.6) + (151.1 + 151.1) * (305.6 - 309.6) + (151.1 + 145.1) * (309.6 - 309.6) + (145.1 + 145.1) * (309.6 - 252) + (145.1 + 151.1) * (252 - 252)) * 0.5 * 0.00694$

2059 Alta Ave, Louisville, KY, US

Gross Living Area: 1820 sq. ft



Space	Area (sq. ft)	Calculation <small>Coordinate Polygon Area Algorithm using inches</small>
FLOOR 2 (Living area)	1121	$-\left((289.5 + 289.5) * (-69.1 - 25.4) + (289.5 + 333) * (25.4 - 25.4) + (333 + 333) * (25.4 - -32.9) + (333 + 360.5) * (-32.9 - -32.9) + (360.5 + 360.5) * (-32.9 - -69.1) + (360.5 + 443) * (-69.1 - -69.1) + (443 + 443) * (-69.1 - 476.6) + (443 + 121.5) * (476.6 - 476.6) + (121.5 + 121.5) * (476.6 - 311.9) + (121.5 + 145.1) * (311.9 - 311.9) + (145.1 + 145.1) * (311.9 - -69.1) + (145.1 + 289.5) * (-69.1 - -69.1)\right) * 0.5 * 0.00694$
LOW CEILING	35	$-\left((360.5 + 360.5) * (-69.1 - -32.9) + (360.5 + 333) * (-32.9 - -32.9) + (333 + 333) * (-32.9 - 25.4) + \right.$

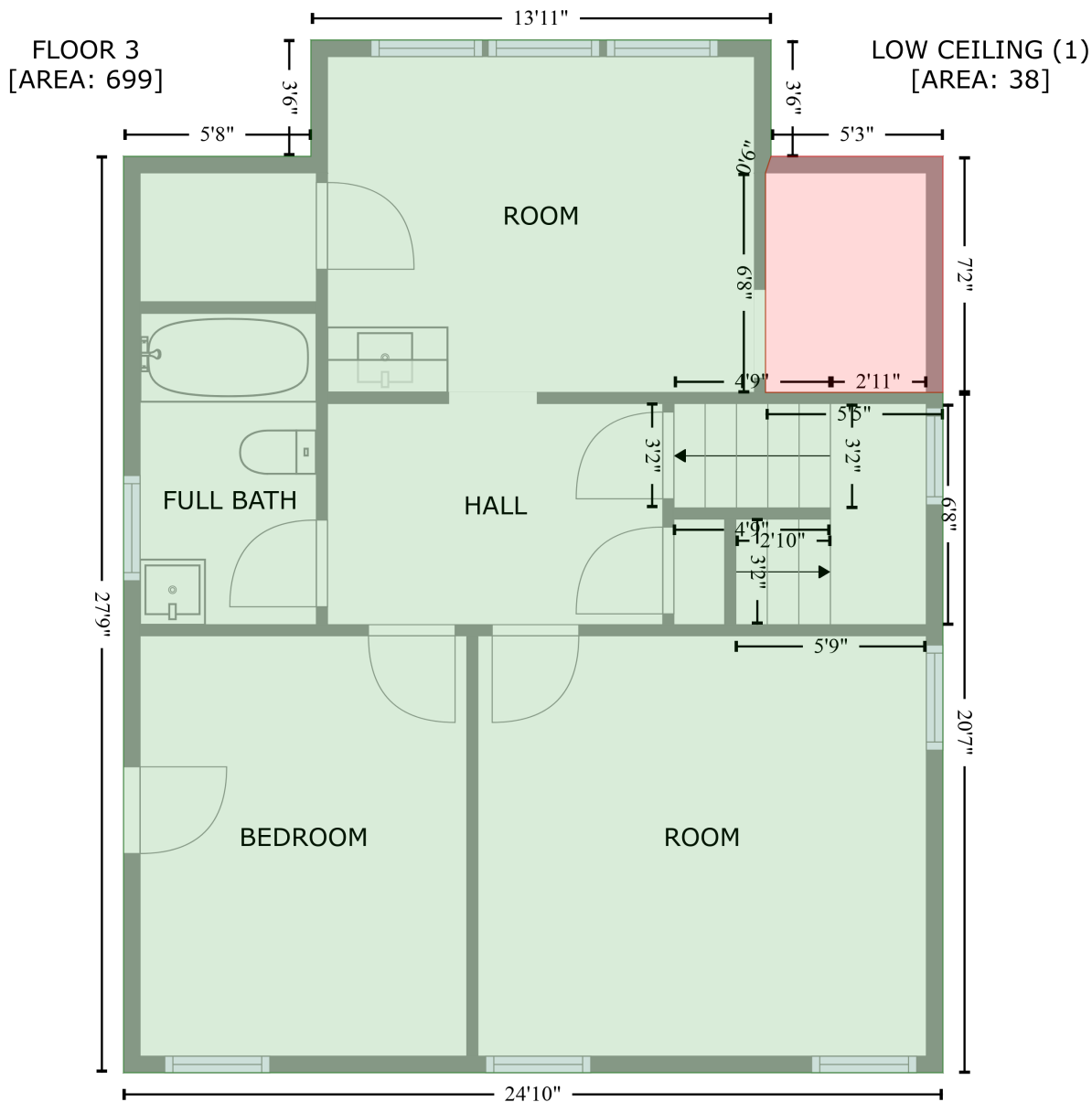
2059 Alta Ave, Louisville, KY, US

Gross Living Area: 1820 sq. ft

Space	Area (sq. ft)	Calculation <small>Coordinate Polygon Area Algorithm using inches</small>
(Non-living area)		$(333 + 289.5) * (25.4 - 25.4) + (289.5 + 289.5) * (25.4 - -69.1) + (289.5 + 360.5) * (-69.1 - -69.1) * 0.5 * 0.00694$
FIREPLACE (Non-living area)	10	$-((466.8 + 466.8) * (360.7 - 424.1) + (466.8 + 443) * (424.1 - 424.1) + (443 + 443) * (424.1 - 360.7) + (443 + 466.8) * (360.7 - 360.7)) * 0.5 * 0.00694$

2059 Alta Ave, Louisville, KY, US

Gross Living Area: 1820 sq. ft



Space	Area (sq. ft)	Calculation <small>Coordinate Polygon Area Algorithm using inches</small>
FLOOR 3 (Living area)	699	$-((380.5 + 380.5) * (101.5 - 143.8) + (380.5 + 378.5) * (143.8 - 149.8) + (378.5 + 378.5) * (149.8 - 229.6) + (378.5 + 443) * (229.6 - 229.6) + (443 + 443) * (229.6 - 476.6) + (443 + 145.1) * (476.6 - 476.6) + (145.1 + 145.1) * (476.6 - 143.8) + (145.1 + 213.2) * (143.8 - 143.8) + (213.2 + 213.2) * (143.8 - 101.5) + (213.2 + 380.5) * (101.5 - 101.5)) * 0.5 * 0.00694$
LOW CEILING (Non-living area)	38	$-((443 + 443) * (143.8 - 229.6) + (443 + 378.5) * (229.6 - 229.6) + (378.5 + 378.5) * (229.6 - 149.8) + (378.5 + 380.5) * (149.8 - 143.8) + (380.5 + 443) * (143.8 - 143.8)) * 0.5 * 0.00694$