

## Home report

350 County Road 723, Cullman, Alabama 35055, United States



**Total Area: 1862 sq. ft**

Below Ground: 816 sq. ft, Floor 2: 1862 sq. ft

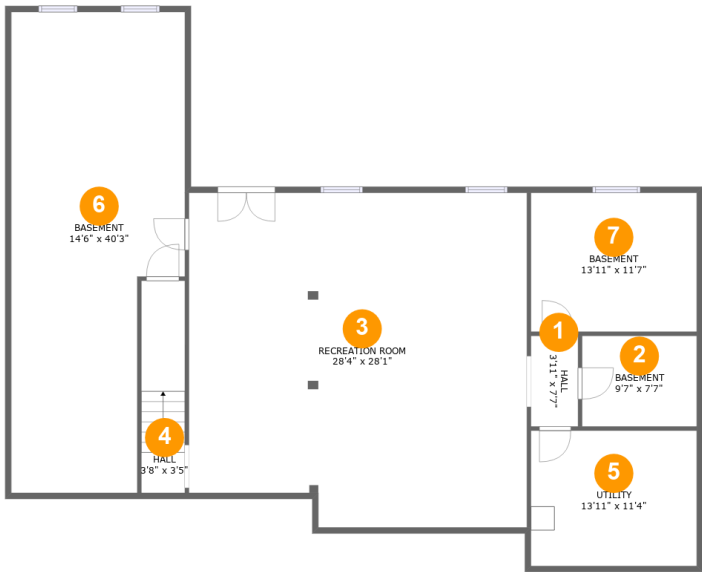
Excluded: Utility 163 sq. ft, Basement 762 sq. ft, Hall 30 sq. ft, Undefined 34 sq. ft, Garage 571 sq. ft, Screened porch 151 sq. ft, Fireplace 13 sq. ft, Walls: 254 sq. ft

## Property summary



Home report

350 County Road 723, Cullman, Alabama 35055, United States



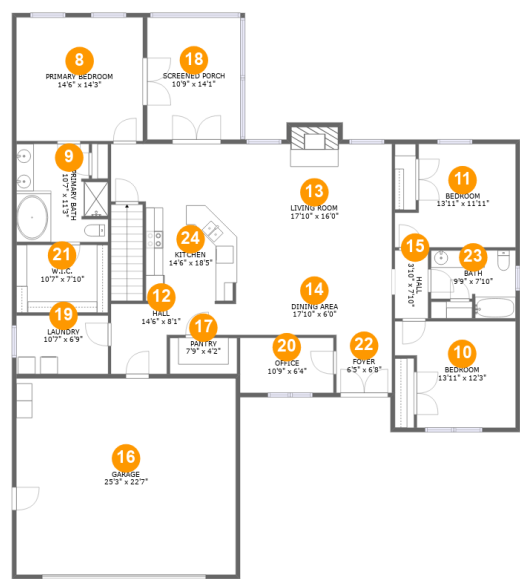
Room dimensions

Floor 1 Below ground Total:816sqft Excluded: 989sqft

#		Max Dimensions	sqft	Included
1	Hall	3'11" x 7'7"	30 sq. ft	No
2	Basement	9'7" x 7'7"	73 sq. ft	No
3	Recreation Room	28'4" x 28'1"	764 sq. ft	Yes
4	Hall	3'8" x 3'5"	31 sq. ft	Yes
5	Utility	13'11" x 11'4"	158 sq. ft	No
6	Basement	14'6" x 40'3"	515 sq. ft	No
7	Basement	13'11" x 11'7"	162 sq. ft	No

Home report

350 County Road 723, Cullman, Alabama 35055, United States



Room dimensions

Floor 2

Total:1862sqft    Excluded: 735sqft

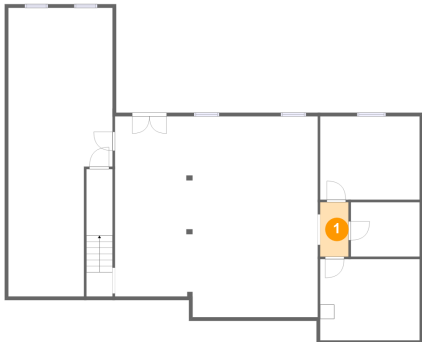
#		Max Dimensions	sqft	Included
8	Primary Bedroom	14'6" x 14'3"	207 sq. ft	Yes
9	Primary Bath	10'7" x 11'3"	108 sq. ft	Yes
10	Bedroom	13'11" x 12'3"	149 sq. ft	Yes
11	Bedroom	13'11" x 11'11"	144 sq. ft	Yes
12	Hall	14'6" x 8'1"	81 sq. ft	Yes
13	Living Room	17'10" x 16'0"	296 sq. ft	Yes
14	Dining Area	17'10" x 6'0"	107 sq. ft	Yes
15	Hall	3'10" x 7'10"	30 sq. ft	Yes
16	Garage	25'3" x 22'7"	571 sq. ft	No
17	Pantry	7'9" x 4'2"	32 sq. ft	Yes
18	Screened Porch	10'9" x 14'1"	151 sq. ft	No

## Home report

**350 County Road 723, Cullman, Alabama 35055, United States**

#		Max Dimensions	sqft	Included
19	Laundry	10'7" x 6'9"	71 sq. ft	Yes
20	Office	10'9" x 6'4"	68 sq. ft	Yes
21	W.I.C.	10'7" x 7'10"	82 sq. ft	Yes
22	Foyer	6'5" x 6'8"	43 sq. ft	Yes
23	Bath	9'9" x 7'10"	65 sq. ft	Yes
24	Kitchen	14'6" x 18'5"	219 sq. ft	Yes

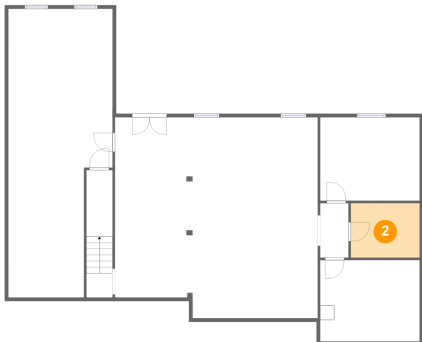
1 Floor 1 - Hall



Max Dimensions: 3'11" x 7'7"  
Calculated Area: 30 sq. ft  
Included: No

Heated: Yes  
Finished: No  
Enclosed: Yes  
Contiguous: Yes  
Permitted: Yes  
Wet space: No  
Addition: No  
Conversion: No

2 Floor 1 - Basement



Max Dimensions: 9'7" x 7'7"  
Calculated Area: 73 sq. ft  
Included: No

Heated: Yes  
Finished: No  
Enclosed: Yes  
Contiguous: Yes  
Permitted: Yes  
Wet space: No  
Addition: No  
Conversion: No

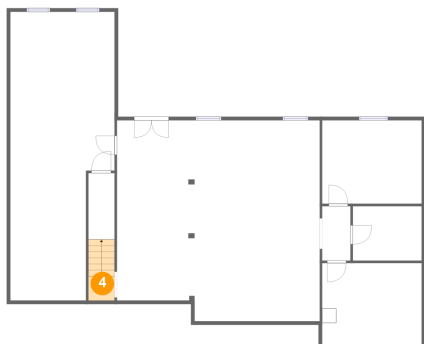
3 Floor 1 - Recreation Room



Max Dimensions: 28'4" x 28'1"  
Calculated Area: 764 sq. ft  
Included: No

Heated: Yes  
Finished: Yes  
Enclosed: Yes  
Contiguous: No  
Permitted: Yes  
Wet space: No  
Addition: No  
Conversion: No

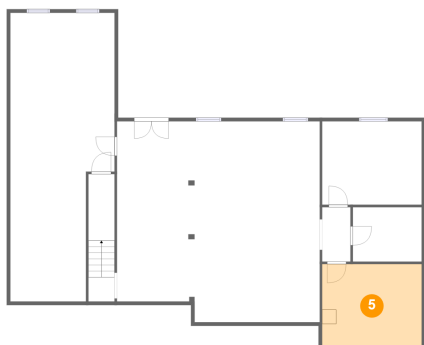
4 Floor 1 - Hall



Max Dimensions: 3'8" x 3'5"  
Calculated Area: 31 sq. ft  
Included: No

Heated: Yes  
Finished: Yes  
Enclosed: Yes  
Contiguous: No  
Permitted: Yes  
Wet space: No  
Addition: No  
Conversion: No

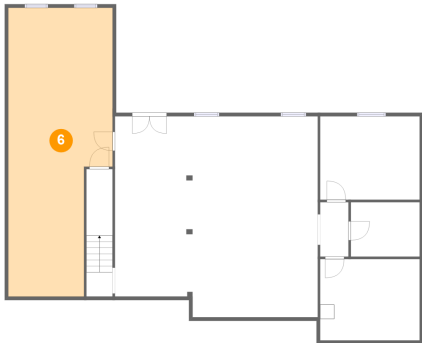
5 Floor 1 - Utility



Max Dimensions: 13'11" x 11'4"  
Calculated Area: 158 sq. ft  
Included: No

Heated: Yes  
Finished: No  
Enclosed: Yes  
Contiguous: Yes  
Permitted: Yes  
Wet space: No  
Addition: No  
Conversion: No

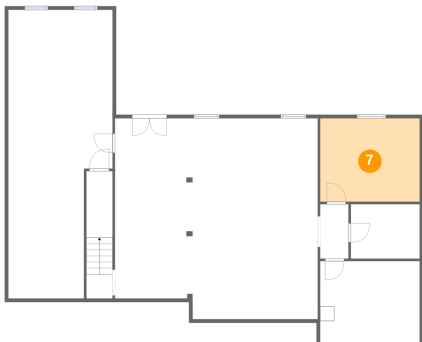
6 Floor 1 - Basement



Max Dimensions: 14'6" x 40'3"  
Calculated Area: 515 sq. ft  
Included: No

Heated: Yes  
Finished: No  
Enclosed: Yes  
Contiguous: Yes  
Permitted: Yes  
Wet space: No  
Addition: No  
Conversion: No

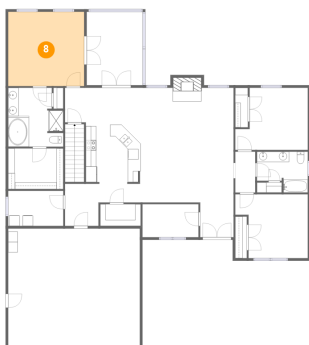
7 Floor 1 - Basement



Max Dimensions: 13'11" x 11'7"  
Calculated Area: 162 sq. ft  
Included: No

Heated: Yes  
Finished: No  
Enclosed: Yes  
Contiguous: Yes  
Permitted: Yes  
Wet space: No  
Addition: No  
Conversion: No

8 Floor 2 - Primary Bedroom



Max Dimensions: 14'6" x 14'3"  
Calculated Area: 207 sq. ft  
Included: Yes

Heated: Yes  
Finished: Yes  
Enclosed: Yes  
Contiguous: Yes  
Permitted: Yes  
Wet space: No  
Addition: No  
Conversion: No

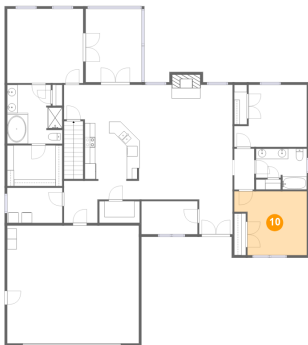
9 Floor 2 - Primary Bath



Max Dimensions: 10'7" x 11'3"  
Calculated Area: 108 sq. ft  
Included: Yes

Heated: Yes  
Finished: Yes  
Enclosed: Yes  
Contiguous: Yes  
Permitted: Yes  
Wet space: Yes  
Addition: No  
Conversion: No

10 Floor 2 - Bedroom



Max Dimensions: 13'11" x 12'3"  
Calculated Area: 149 sq. ft  
Included: Yes

Heated: Yes  
Finished: Yes  
Enclosed: Yes  
Contiguous: Yes  
Permitted: Yes  
Wet space: No  
Addition: No  
Conversion: No

11 Floor 2 - Bedroom

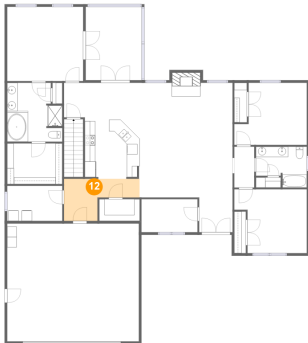


Max Dimensions: 13'11" x 11'11"  
Calculated Area: 144 sq. ft  
Included: Yes

Heated: Yes  
Finished: Yes  
Enclosed: Yes  
Contiguous: Yes  
Permitted: Yes  
Wet space: No  
Addition: No  
Conversion: No



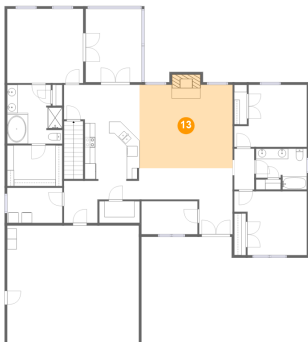
12 Floor 2 - Hall



Max Dimensions: 14'6" x 8'1"  
Calculated Area: 81 sq. ft  
Included: Yes

Heated: Yes  
Finished: Yes  
Enclosed: Yes  
Contiguous: Yes  
Permitted: Yes  
Wet space: No  
Addition: No  
Conversion: No

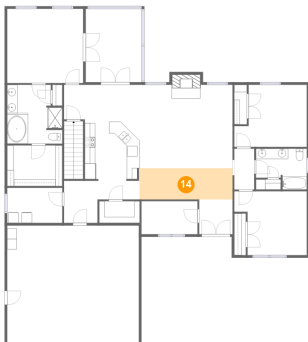
13 Floor 2 - Living Room



Max Dimensions: 17'10" x 16'0"  
Calculated Area: 296 sq. ft  
Included: Yes

Heated: Yes  
Finished: Yes  
Enclosed: Yes  
Contiguous: Yes  
Permitted: Yes  
Wet space: No  
Addition: No  
Conversion: No

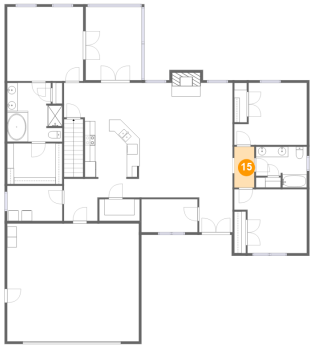
14 Floor 2 - Dining Area



Max Dimensions: 17'10" x 6'0"  
Calculated Area: 107 sq. ft  
Included: Yes

Heated: Yes  
Finished: Yes  
Enclosed: Yes  
Contiguous: Yes  
Permitted: Yes  
Wet space: No  
Addition: No  
Conversion: No

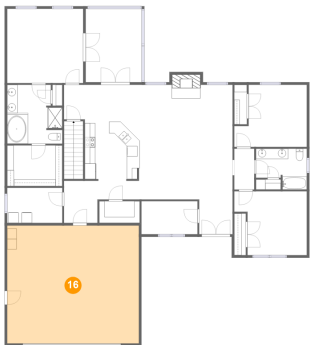
15 Floor 2 - Hall



Max Dimensions: 3'10" x 7'10"  
Calculated Area: 30 sq. ft  
Included: Yes

Heated: Yes  
Finished: Yes  
Enclosed: Yes  
Contiguous: Yes  
Permitted: Yes  
Wet space: No  
Addition: No  
Conversion: No

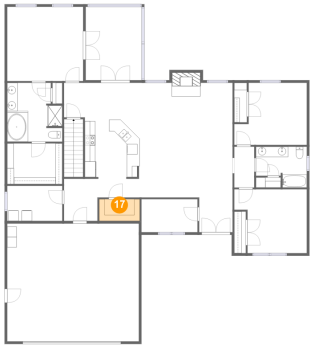
16 Floor 2 - Garage



Max Dimensions: 25'3" x 22'7"  
Calculated Area: 571 sq. ft  
Included: No

Heated: No  
Finished: No  
Enclosed: Yes  
Contiguous: Yes  
Permitted: Yes  
Wet space: No  
Addition: No  
Conversion: No

17 Floor 2 - Pantry



Max Dimensions: 7'9" x 4'2"  
Calculated Area: 32 sq. ft  
Included: Yes

Heated: Yes  
Finished: Yes  
Enclosed: Yes  
Contiguous: Yes  
Permitted: Yes  
Wet space: No  
Addition: No  
Conversion: No

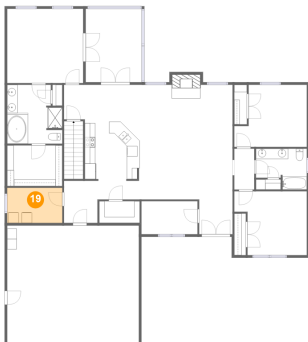
18 Floor 2 - Screened Porch



Max Dimensions: 10'9" x 14'1"  
Calculated Area: 151 sq. ft  
Included: No

Heated: No  
Finished: Yes  
Enclosed: No  
Contiguous: Yes  
Permitted: Yes  
Wet space: No  
Addition: No  
Conversion: No

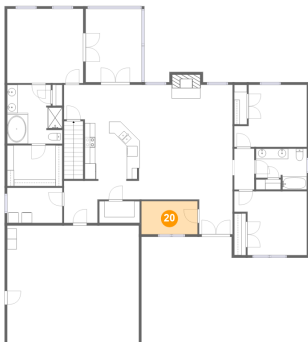
19 Floor 2 - Laundry



Max Dimensions: 10'7" x 6'9"  
Calculated Area: 71 sq. ft  
Included: Yes

Heated: Yes  
Finished: Yes  
Enclosed: Yes  
Contiguous: Yes  
Permitted: Yes  
Wet space: No  
Addition: No  
Conversion: No

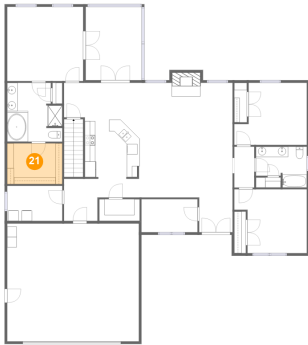
20 Floor 2 - Office



Max Dimensions: 10'9" x 6'4"  
Calculated Area: 68 sq. ft  
Included: Yes

Heated: Yes  
Finished: Yes  
Enclosed: Yes  
Contiguous: Yes  
Permitted: Yes  
Wet space: No  
Addition: No  
Conversion: No

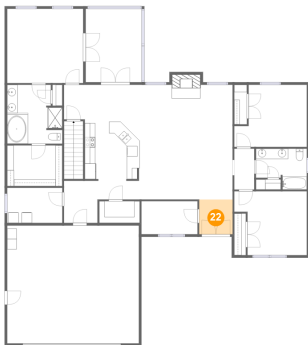
21 Floor 2 - W.I.C.



Max Dimensions: 10'7" x 7'10"  
Calculated Area: 82 sq. ft  
Included: Yes

Heated: Yes  
Finished: Yes  
Enclosed: Yes  
Contiguous: Yes  
Permitted: Yes  
Wet space: No  
Addition: No  
Conversion: No

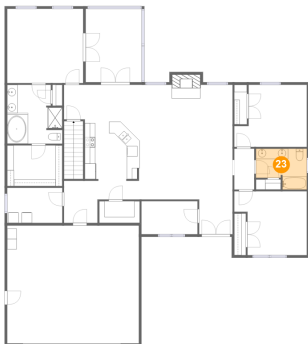
22 Floor 2 - Foyer



Max Dimensions: 6'5" x 6'8"  
Calculated Area: 43 sq. ft  
Included: Yes

Heated: Yes  
Finished: Yes  
Enclosed: Yes  
Contiguous: Yes  
Permitted: Yes  
Wet space: No  
Addition: No  
Conversion: No

23 Floor 2 - Bath



Max Dimensions: 9'9" x 7'10"  
Calculated Area: 65 sq. ft  
Included: Yes

Heated: Yes  
Finished: Yes  
Enclosed: Yes  
Contiguous: Yes  
Permitted: Yes  
Wet space: Yes  
Addition: No  
Conversion: No

24 Floor 2 - Kitchen



Max Dimensions: 14'6" x 18'5"  
Calculated Area: 219 sq. ft  
Included: Yes

Heated: Yes  
Finished: Yes  
Enclosed: Yes  
Contiguous: Yes  
Permitted: Yes  
Wet space: No  
Addition: No  
Conversion: No