

Home report

2659 Nottingham Road Southeast, South Roanoke, Roanoke,
Roanoke city, Virginia, United States, 24014



Total Area: 2914 sq. ft

Floor 1: 716 sq. ft, Floor 2: 1264 sq. ft, Floor 3: 934 sq. ft, Floor 4: 0 sq. ft

Excluded: Utility 70 sq. ft, Utility Laundry 32 sq. ft, Garage 282 sq. ft, Outdoor Deck 192 sq. ft, Low Ceiling 488 sq. ft, Attic 445 sq. ft

Property summary

 **4** Floors

 **3** Bedrooms

 **3** Bathrooms

Home report

**2659 Nottingham Road Southeast, South Roanoke, Roanoke,
Roanoke city, Virginia, United States, 24014**



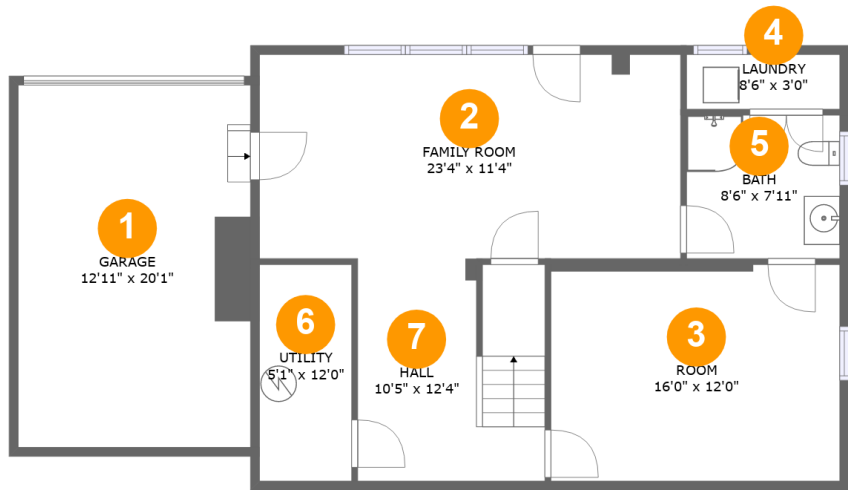
1
Half baths



1
Garages

Home report

2659 Nottingham Road Southeast, South Roanoke, Roanoke,
Roanoke city, Virginia, United States, 24014



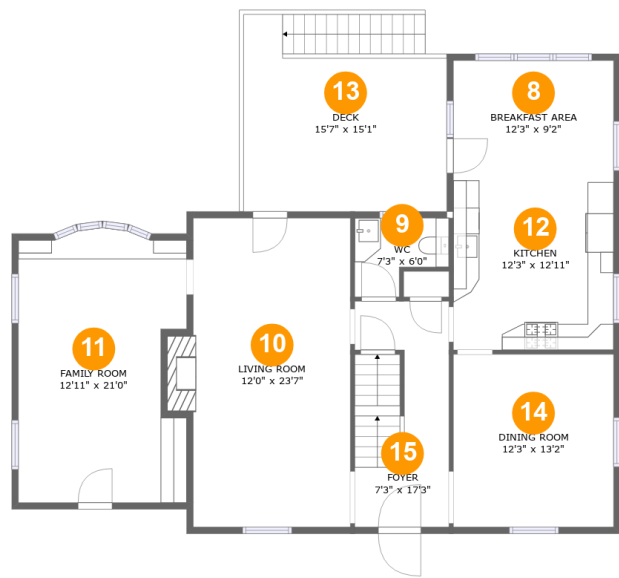
Room dimensions

Floor 1 Total:716sqft Excluded: 384sqft

#		Max Dimensions	sqft	Included
1	Garage	12'11" x 20'1"	259 sq. ft	No
2	Family Room	23'4" x 11'4"	264 sq. ft	Yes
3	Room	16'0" x 12'0"	192 sq. ft	Yes
4	Laundry	8'6" x 3'0"	26 sq. ft	No
5	Bath	8'6" x 7'11"	68 sq. ft	Yes
6	Utility	5'1" x 12'0"	61 sq. ft	No
7	Hall	10'5" x 12'4"	125 sq. ft	Yes

Home report

2659 Nottingham Road Southeast, South Roanoke, Roanoke,
Roanoke city, Virginia, United States, 24014



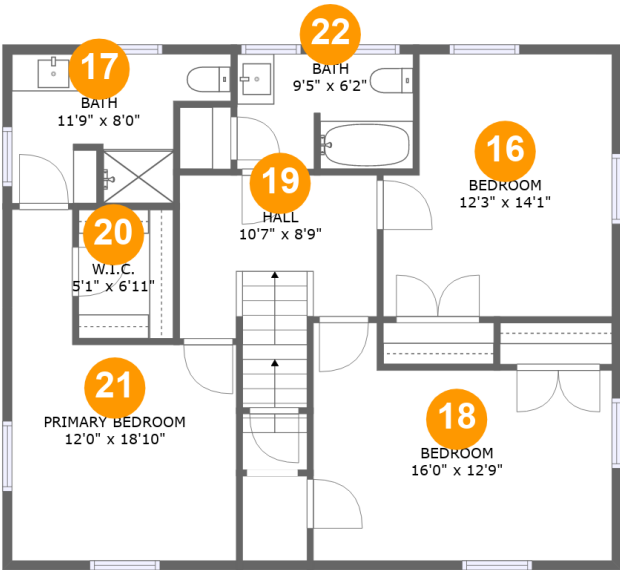
Room dimensions

Floor 2 Total:1264sqft Excluded: 192sqft

#		Max Dimensions	sqft	Included
8	Breakfast Area	12'3" x 9'2"	113 sq. ft	Yes
9	WC	7'3" x 6'0"	35 sq. ft	Yes
10	Living Room	12'0" x 23'7"	296 sq. ft	Yes
11	Family Room	12'11" x 21'0"	250 sq. ft	Yes
12	Kitchen	12'3" x 12'11"	159 sq. ft	Yes
13	Deck	15'7" x 15'1"	192 sq. ft	No
14	Dining Room	12'3" x 13'2"	162 sq. ft	Yes
15	Foyer	7'3" x 17'3"	122 sq. ft	Yes

Home report

2659 Nottingham Road Southeast, South Roanoke, Roanoke,
Roanoke city, Virginia, United States, 24014



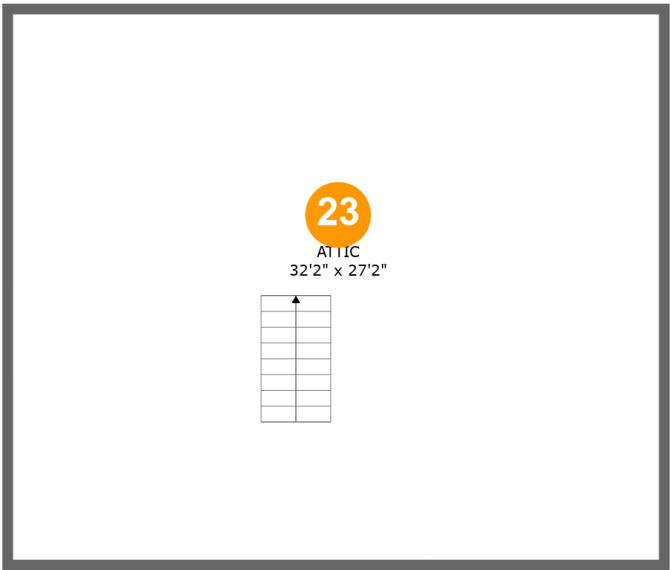
Room dimensions

Floor 3 Total:934sqft Excluded: 0sqft

#		Max Dimensions	sqft	Included
16	Bedroom	12'3" x 14'1"	160 sq. ft	Yes
17	Bath	11'9" x 8'0"	76 sq. ft	Yes
18	Bedroom	16'0" x 12'9"	172 sq. ft	Yes
19	Hall	10'7" x 8'9"	101 sq. ft	Yes
20	W.I.C.	5'1" x 6'11"	35 sq. ft	Yes
21	Primary Bedroom	12'0" x 18'10"	163 sq. ft	Yes
22	Bath	9'5" x 6'2"	57 sq. ft	Yes

Home report

2659 Nottingham Road Southeast, South Roanoke, Roanoke,
Roanoke city, Virginia, United States, 24014



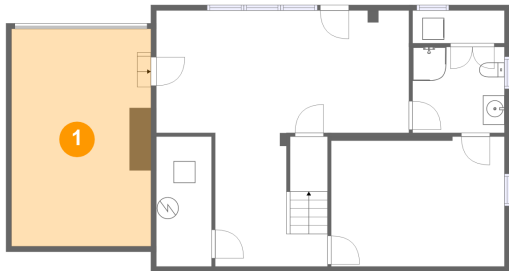
Room dimensions

Floor 4 Total:0sqft Excluded: 933sqft

#		Max Dimensions	sqft	Included
23	Attic	32'2" x 27'2"	432 sq. ft	No

2659 Nottingham Road Southeast, South Roanoke, Roanoke,
Roanoke city, Virginia, United States, 24014

1 Floor 1 - Garage



Max Dimensions: 12'11" x 20'1"
Calculated Area: 259 sq. ft
Included: No

Heated: No
Finished: No
Enclosed: Yes
Contiguous: Yes
Permitted: Yes
Wet space: No
Addition: No
Conversion: No

2 Floor 1 - Family Room



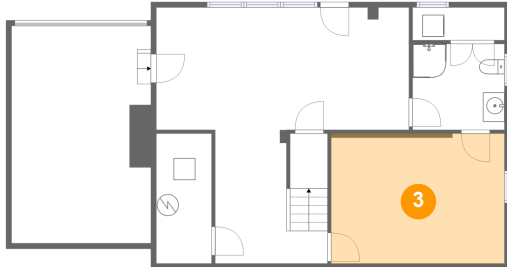
Max Dimensions: 23'4" x 11'4"
Calculated Area: 264 sq. ft
Included: Yes

Heated: Yes
Finished: Yes
Enclosed: Yes
Contiguous: Yes
Permitted: Yes
Wet space: No
Addition: No
Conversion: No

Home report

2659 Nottingham Road Southeast, South Roanoke, Roanoke,
Roanoke city, Virginia, United States, 24014

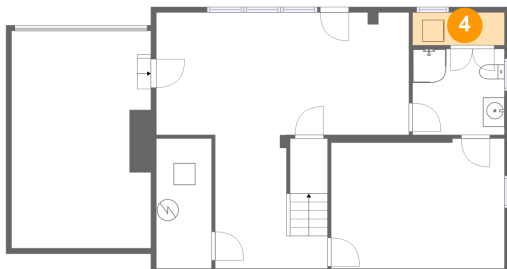
3 Floor 1 - Room



Max Dimensions: 16'0" x 12'0"
Calculated Area: 192 sq. ft
Included: Yes

Heated: Yes
Finished: Yes
Enclosed: Yes
Contiguous: Yes
Permitted: Yes
Wet space: No
Addition: No
Conversion: No

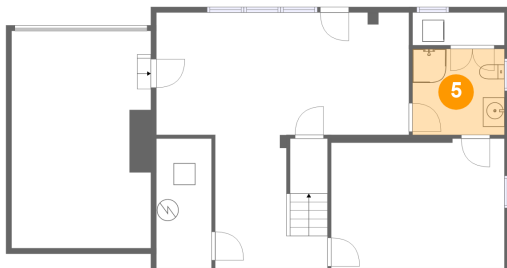
4 Floor 1 - Laundry



Max Dimensions: 8'6" x 3'0"
Calculated Area: 26 sq. ft
Included: No

Heated: Yes
Finished: No
Enclosed: Yes
Contiguous: Yes
Permitted: Yes
Wet space: No
Addition: No
Conversion: No

5 Floor 1 - Bath

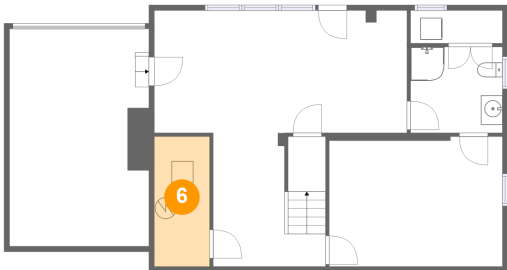


Max Dimensions: 8'6" x 7'11"
Calculated Area: 68 sq. ft
Included: Yes

Heated: Yes
Finished: Yes
Enclosed: Yes
Contiguous: Yes
Permitted: Yes
Wet space: Yes
Addition: No
Conversion: No

2659 Nottingham Road Southeast, South Roanoke, Roanoke,
Roanoke city, Virginia, United States, 24014

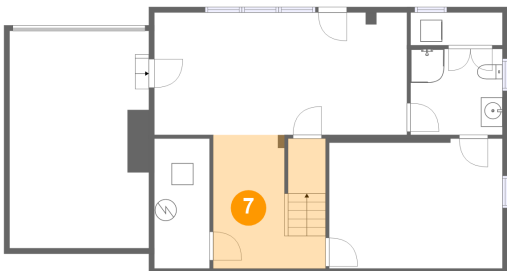
6 Floor 1 - Utility



Max Dimensions: 5'1" x 12'0"
Calculated Area: 61 sq. ft
Included: No

Heated: Yes
Finished: No
Enclosed: Yes
Contiguous: Yes
Permitted: Yes
Wet space: No
Addition: No
Conversion: No

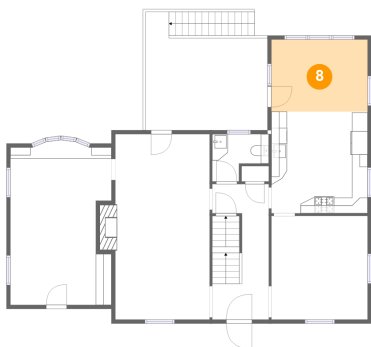
7 Floor 1 - Hall



Max Dimensions: 10'5" x 12'4"
Calculated Area: 125 sq. ft
Included: Yes

Heated: Yes
Finished: Yes
Enclosed: Yes
Contiguous: Yes
Permitted: Yes
Wet space: No
Addition: No
Conversion: No

8 Floor 2 - Breakfast Area



Max Dimensions: 12'3" x 9'2"
Calculated Area: 113 sq. ft
Included: Yes

Heated: Yes
Finished: Yes
Enclosed: Yes
Contiguous: Yes
Permitted: Yes
Wet space: No
Addition: No
Conversion: No

2659 Nottingham Road Southeast, South Roanoke, Roanoke,
Roanoke city, Virginia, United States, 24014

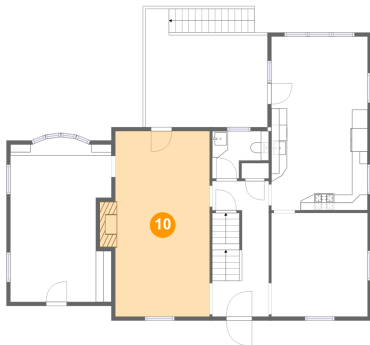
9 Floor 2 - WC



Max Dimensions: 7'3" x 6'0"
Calculated Area: 35 sq. ft
Included: Yes

Heated: Yes
Finished: Yes
Enclosed: Yes
Contiguous: Yes
Permitted: Yes
Wet space: Yes
Addition: No
Conversion: No

10 Floor 2 - Living Room



Max Dimensions: 12'0" x 23'7"
Calculated Area: 296 sq. ft
Included: Yes

Heated: Yes
Finished: Yes
Enclosed: Yes
Contiguous: Yes
Permitted: Yes
Wet space: No
Addition: No
Conversion: No

11 Floor 2 - Family Room

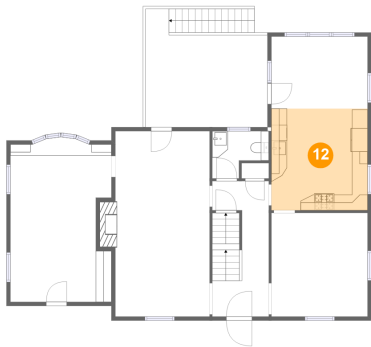


Max Dimensions: 12'11" x 21'0"
Calculated Area: 250 sq. ft
Included: Yes

Heated: Yes
Finished: Yes
Enclosed: Yes
Contiguous: Yes
Permitted: Yes
Wet space: No
Addition: No
Conversion: No

2659 Nottingham Road Southeast, South Roanoke, Roanoke,
Roanoke city, Virginia, United States, 24014

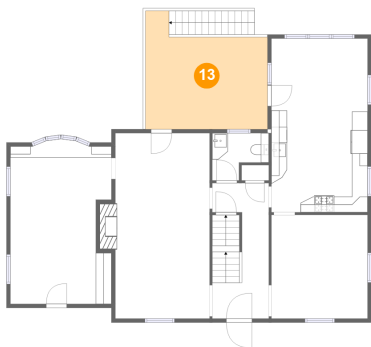
12 Floor 2 - Kitchen



Max Dimensions: 12'3" x 12'11"
Calculated Area: 159 sq. ft
Included: Yes

Heated: Yes
Finished: Yes
Enclosed: Yes
Contiguous: Yes
Permitted: Yes
Wet space: No
Addition: No
Conversion: No

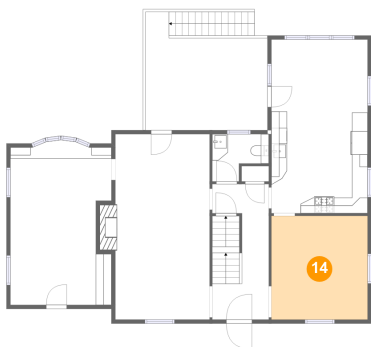
13 Floor 2 - Deck



Max Dimensions: 15'7" x 15'1"
Calculated Area: 192 sq. ft
Included: No

Heated: No
Finished: Yes
Enclosed: No
Contiguous: Yes
Permitted: Yes
Wet space: No
Addition: No
Conversion: No

14 Floor 2 - Dining Room

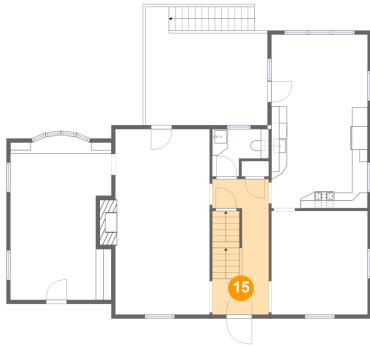


Max Dimensions: 12'3" x 13'2"
Calculated Area: 162 sq. ft
Included: Yes

Heated: Yes
Finished: Yes
Enclosed: Yes
Contiguous: Yes
Permitted: Yes
Wet space: No
Addition: No
Conversion: No

2659 Nottingham Road Southeast, South Roanoke, Roanoke,
Roanoke city, Virginia, United States, 24014

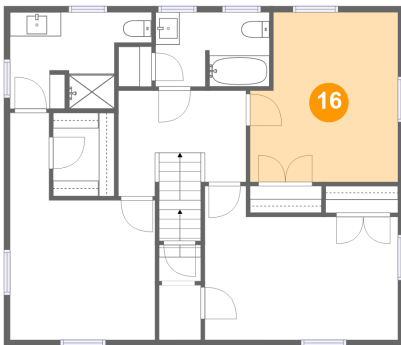
15 Floor 2 - Foyer



Max Dimensions: 7'3" x 17'3"
Calculated Area: 122 sq. ft
Included: Yes

Heated: Yes
Finished: Yes
Enclosed: Yes
Contiguous: Yes
Permitted: Yes
Wet space: No
Addition: No
Conversion: No

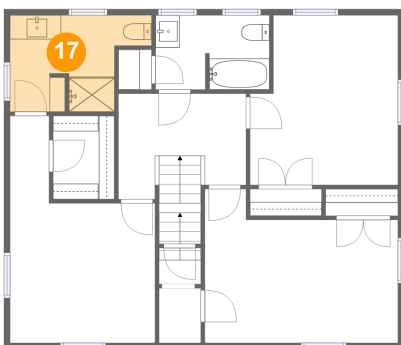
16 Floor 3 - Bedroom



Max Dimensions: 12'3" x 14'1"
Calculated Area: 160 sq. ft
Included: Yes

Heated: Yes
Finished: Yes
Enclosed: Yes
Contiguous: Yes
Permitted: Yes
Wet space: No
Addition: No
Conversion: No

17 Floor 3 - Bath

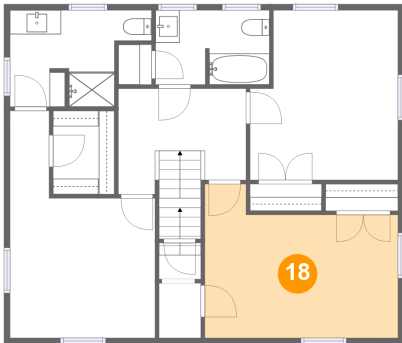


Max Dimensions: 11'9" x 8'0"
Calculated Area: 76 sq. ft
Included: Yes

Heated: Yes
Finished: Yes
Enclosed: Yes
Contiguous: Yes
Permitted: Yes
Wet space: Yes
Addition: No
Conversion: No

2659 Nottingham Road Southeast, South Roanoke, Roanoke,
Roanoke city, Virginia, United States, 24014

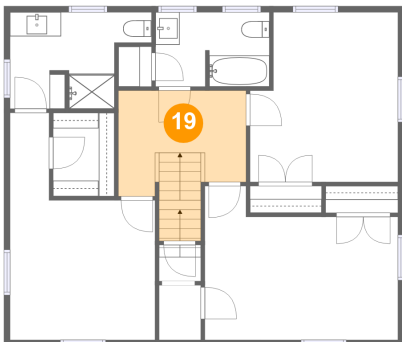
18 Floor 3 - Bedroom



Max Dimensions: 16'0" x 12'9"
Calculated Area: 172 sq. ft
Included: Yes

Heated: Yes
Finished: Yes
Enclosed: Yes
Contiguous: Yes
Permitted: Yes
Wet space: No
Addition: No
Conversion: No

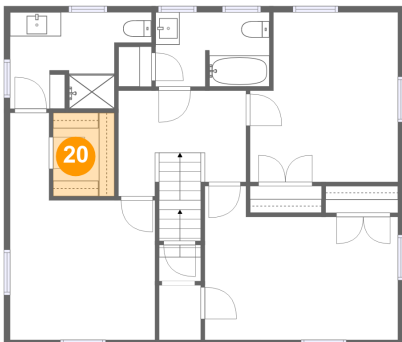
19 Floor 3 - Hall



Max Dimensions: 10'7" x 8'9"
Calculated Area: 101 sq. ft
Included: Yes

Heated: Yes
Finished: Yes
Enclosed: Yes
Contiguous: Yes
Permitted: Yes
Wet space: No
Addition: No
Conversion: No

20 Floor 3 - W.I.C.

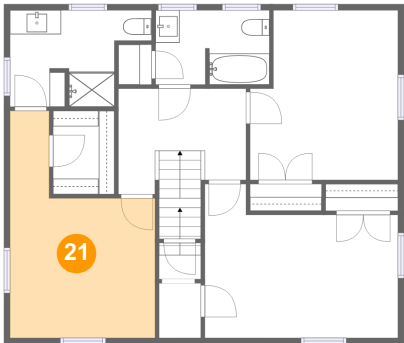


Max Dimensions: 5'1" x 6'11"
Calculated Area: 35 sq. ft
Included: Yes

Heated: Yes
Finished: Yes
Enclosed: Yes
Contiguous: Yes
Permitted: Yes
Wet space: No
Addition: No
Conversion: No

2659 Nottingham Road Southeast, South Roanoke, Roanoke,
Roanoke city, Virginia, United States, 24014

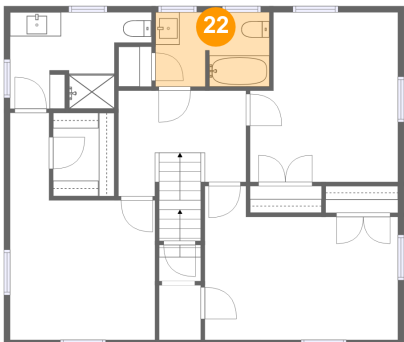
21 Floor 3 - Primary Bedroom



Max Dimensions: 12'0" x 18'10"
Calculated Area: 163 sq. ft
Included: Yes

Heated: Yes
Finished: Yes
Enclosed: Yes
Contiguous: Yes
Permitted: Yes
Wet space: No
Addition: No
Conversion: No

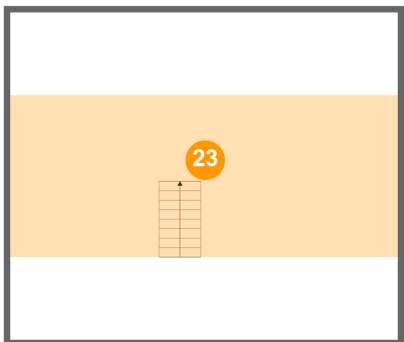
22 Floor 3 - Bath



Max Dimensions: 9'5" x 6'2"
Calculated Area: 57 sq. ft
Included: Yes

Heated: Yes
Finished: Yes
Enclosed: Yes
Contiguous: Yes
Permitted: Yes
Wet space: Yes
Addition: No
Conversion: No

23 Floor 4 - Attic



Max Dimensions: 32'2" x 27'2"
Calculated Area: 432 sq. ft
Included: No

Heated: No
Finished: No
Enclosed: Yes
Contiguous: Yes
Permitted: Yes
Wet space: No
Addition: No
Conversion: No