

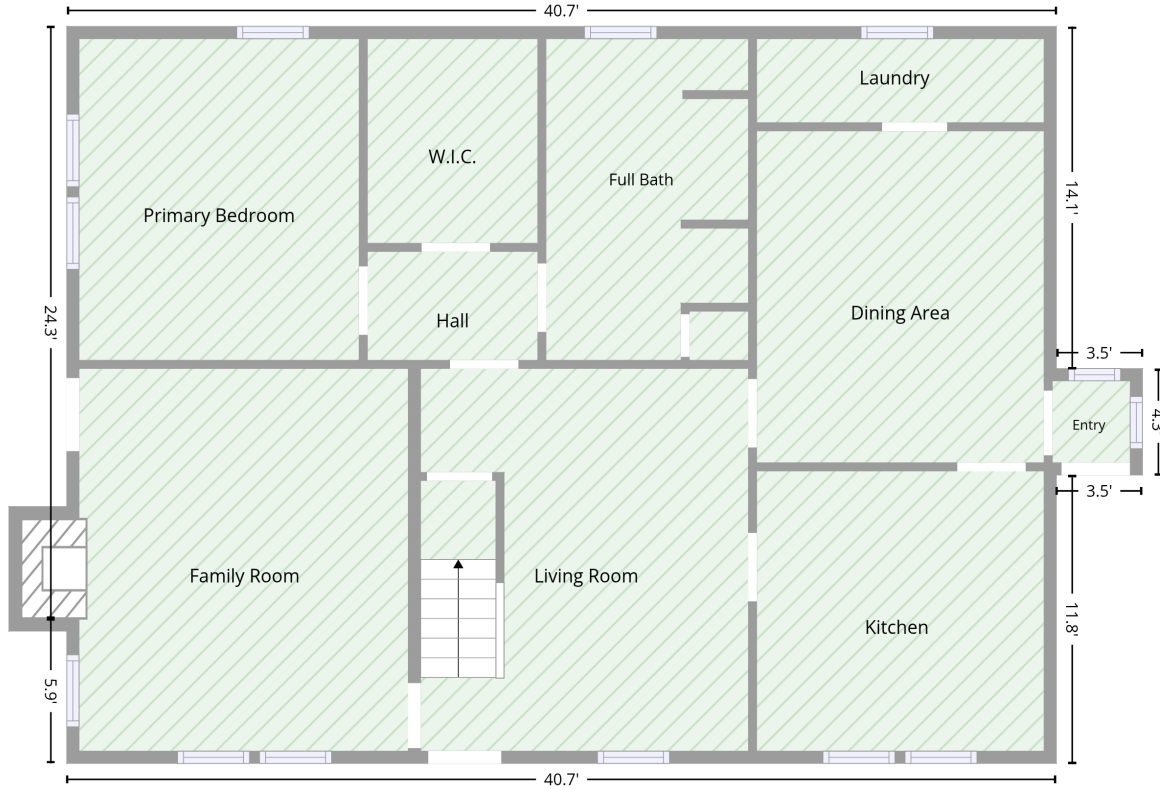
408 Garrou Avenue Southeast, Valdese, Burke County, North Carolina, United States, 28690

Total area: 1688 sq. ft
Gross living area: 1641 sq. ft

Finished area: 1641 sq. ft
Non-standard finished area: 0 sq. ft

Level 1

1246 sq. ft Finished Area
Above Grade



Total area: 1246 sq. ft
Gross living area: 1246 sq. ft

Finished area: 1246 sq. ft
Non-standard finished area: 0 sq. ft

Space	Area (sq. ft)	Calculation <small>Coordinate Polygon Area Algorithm using inches</small>
Finished Area	1246	$-\left((487.2 + 487.2) * (5 - 173.6) + (487.2 + 529.7) * (173.6 - 173.6) + (529.7 + 529.7) * (173.6 - 226) + (529.7 + 487.2) * (226 - 226) + (487.2 + 487.2) * (226 - 368.1) + (487.2 + -0.7) * (368.1 - 368.1) + (-0.7 + -0.7) * (368.1 - 296.9) + (-0.7 + -0.7) * (296.9 - 296.9) + (-0.7 + -0.7) * (296.9 - 5) + (-0.7 + 487.2) * (5 - 5)\right) * 0.5 * 0.000694$
• Living area		
• Finished Area		

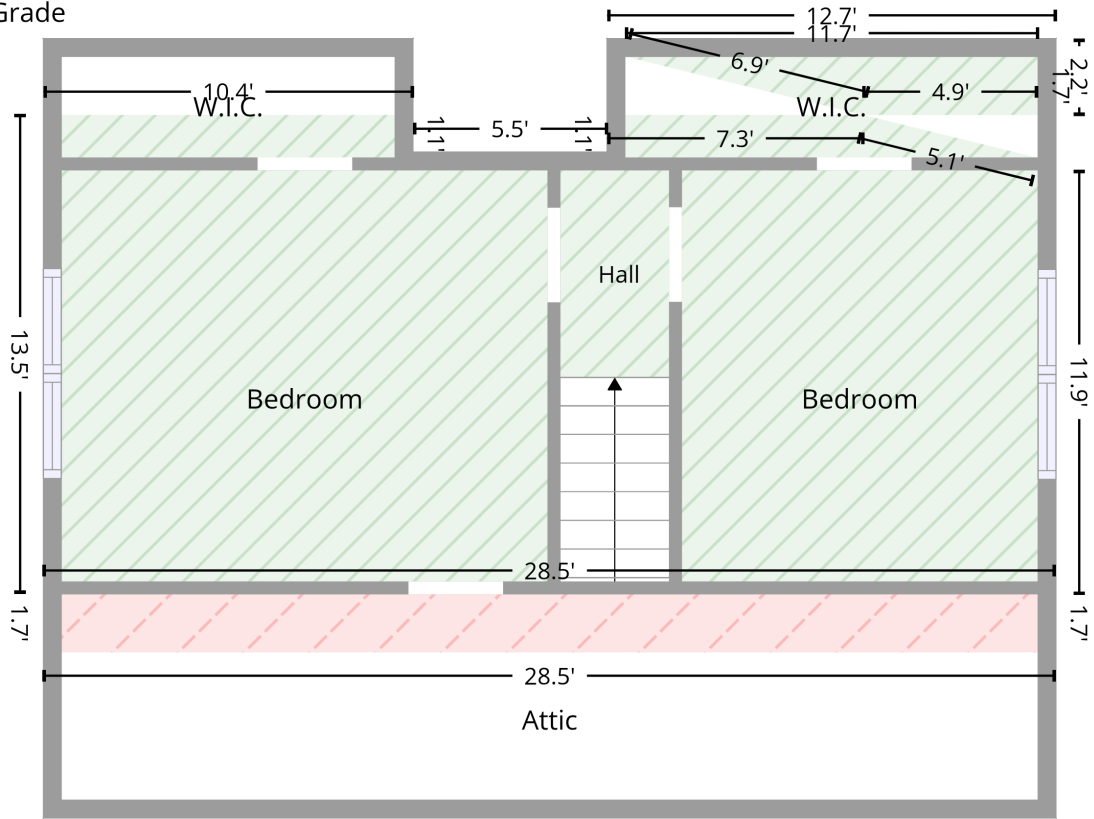
408 Garrou Avenue Southeast, Valdese, Burke County, North Carolina, United States, 28690

Total area: 1688 sq. ft
Gross living area: 1641 sq. ft

Finished area: 1641 sq. ft
Non-standard finished area: 0 sq. ft

Level 2

395 sq. ft Finished Area
Above Grade



47 sq. ft Unfinished Area
Above Grade

Total area: 442 sq. ft
Gross living area: 395 sq. ft

Finished area: 395 sq. ft
Non-standard finished area: 0 sq. ft

408 Garrou Avenue Southeast, Valdese, Burke County, North Carolina, United States, 28690

Total area: 1688 sq. ft
Gross living area: 1641 sq. ft

Finished area: 1641 sq. ft
Non-standard finished area: 0 sq. ft

Level 2

Space	Area (sq. ft)	Calculation <small>Coordinate Polygon Area Algorithm using inches</small>
Finished Area <ul style="list-style-type: none">• Living area• Finished Area	395	$\begin{aligned} & -((124.1 + 124.1) * (130.6 - 143.2) + (124.1 + 189.7) * (143.2 - 143.2) + (189.7 + 189.7) * (143.2 - 130.6) + (189.7 + 276.4) * (130.6 - 130.6) + (276.4 + 335.4) * (130.6 - 145.2) + (335.4 + 335.4) * \\ & (145.2 - 149.2) + (335.4 + 341.4) * (149.2 - 149.2) + (341.4 + 341.4) * (149.2 - 292.4) + (341.4 + \\ & -0.7) * (292.4 - 292.4) + (-0.7 + -0.7) * (292.4 - 130.6) + (-0.7 + 124.1) * (130.6 - 130.6)) * 0.5 * \\ & 0.00694 + -((195.7 + 335.4) * (110.8 - 110.9) + (335.4 + 335.4) * (110.9 - 130.6) + (335.4 + \\ & 276.4) * (130.6 - 130.6) + (276.4 + 195.7) * (130.6 - 110.8)) * 0.5 * 0.00694 + -((341.4 + 341.4) * \\ & (104.8 - 130.6) + (341.4 + 335.4) * (130.6 - 130.6) + (335.4 + 335.4) * (130.6 - 110.8) + (335.4 + \\ & 195.7) * (110.8 - 110.8) + (195.7 + 189.7) * (110.8 - 104.8) + (189.7 + 341.4) * (104.8 - 104.8)) * \\ & 0.5 * 0.00694 \end{aligned}$
ATTIC <ul style="list-style-type: none">• Non-living area• Unfinished Area	47	$\begin{aligned} & -((341.4 + 341.4) * (292.4 - 312.2) + (341.4 + -0.7) * (312.2 - 312.2) + (-0.7 + -0.7) * (312.2 - \\ & 292.4) + (-0.7 + 341.4) * (292.4 - 292.4)) * 0.5 * 0.00694 \end{aligned}$

408 Garrou Avenue Southeast, Valdese, Burke County, North Carolina, United States, 28690

Total area: 1688 sq. ft
Gross living area: 1641 sq. ft

Finished area: 1641 sq. ft
Non-standard finished area: 0 sq. ft

Property UPD

Data	Value
Structure	1
Unit	1
Level Number	1
Below Grade	false
Level Low Ceiling	false
ADU Indicator	false
Total Area	1246
Finished Area	1246
Non-Standard Finished Area	0
Structure	1
Unit	1
Level Number	2
Below Grade	false
Level Low Ceiling	true
ADU Indicator	false
Total Area	442
Finished Area	395
Non-Standard Finished Area	0