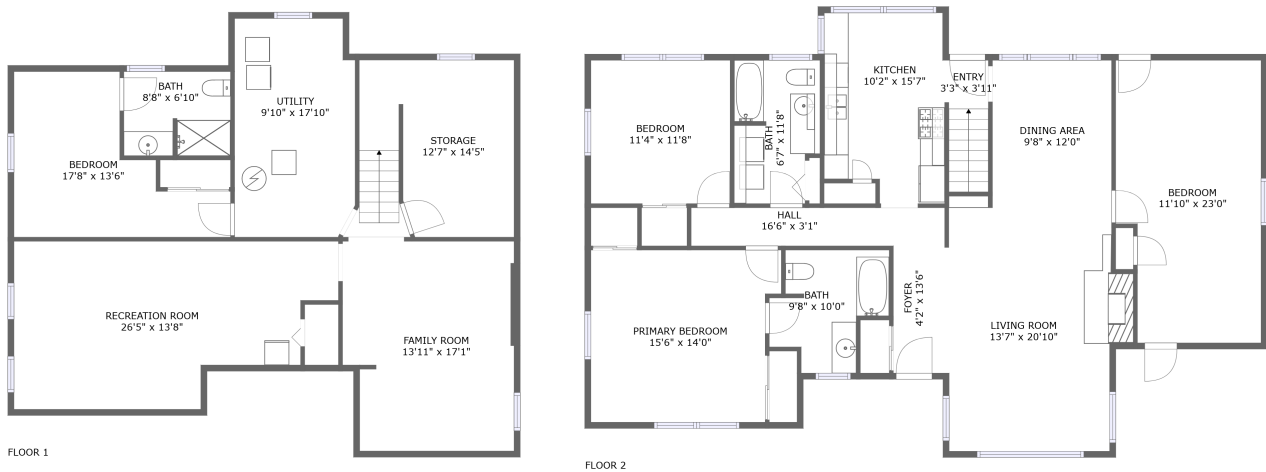



# 1035 N 10th St, Spearfish, SD, US



## Property summary

 **0** Garages

 **4** Bedrooms

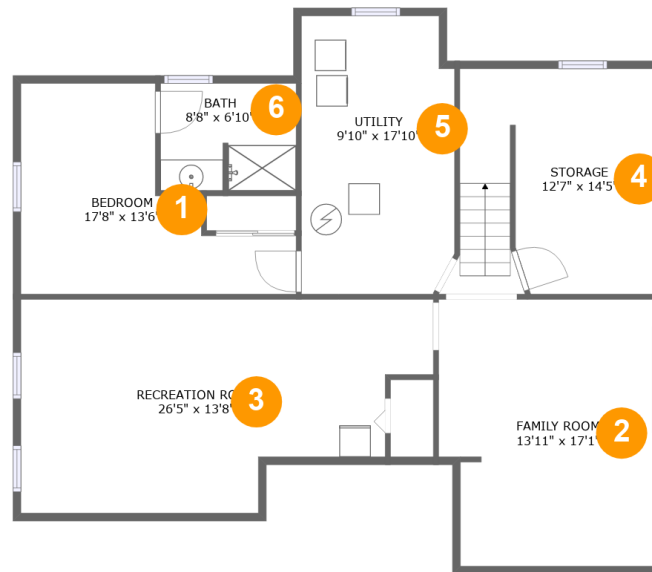
 **3** Bathrooms

 **0** Half baths

 **2** Floors

 **1,909** Gross living area sqft

 **2,894** Total sqft

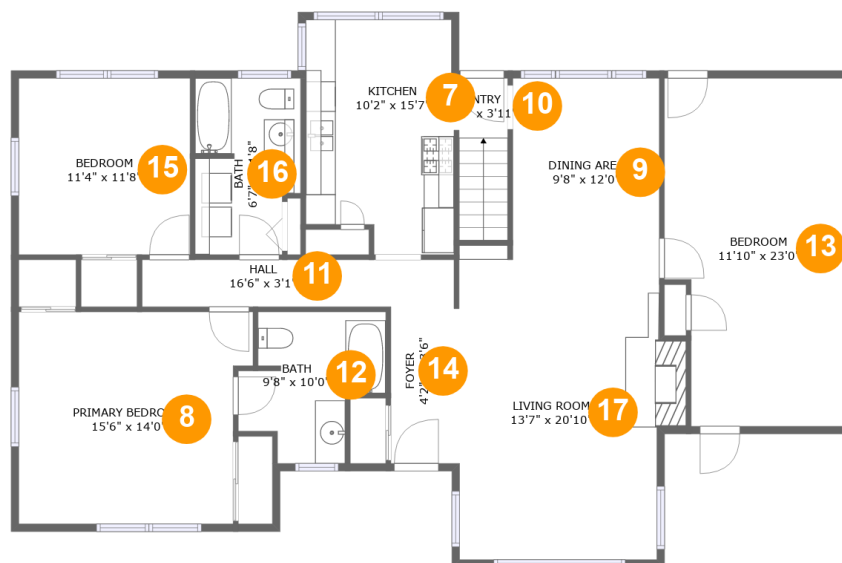
**1035 N 10th St, Spearfish, SD, US****Room dimensions**

Floor 1

Total sqft: 1250    Living area: 265

#		Dimensions	sqft	Counted as living area
1	Bedroom	17'8" x 13'6"	158 sq. ft	Yes
2	Family Room	13'11" x 17'1"	227 sq. ft	No
3	Recreation Room	26'5" x 13'8"	305 sq. ft	No
4	Storage	12'7" x 14'5"	180 sq. ft	No
5	Utility	9'10" x 17'10"	170 sq. ft	No
6	Bath	8'8" x 6'10"	59 sq. ft	Yes

# 1035 N 10th St, Spearfish, SD, US



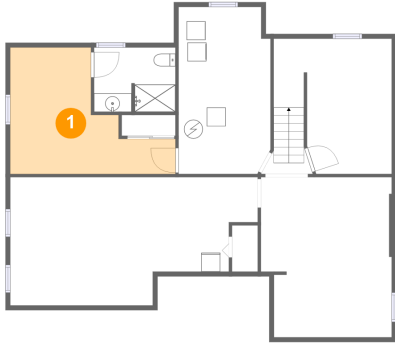
## Room dimensions

Floor 2

Total sqft: 1644 Living area: 1644

#		Dimensions	sqft	Counted as living area
7	Kitchen	10'2" x 15'7"	144 sq. ft	Yes
8	Primary Bedroom	15'6" x 14'0"	204 sq. ft	Yes
9	Dining Area	9'8" x 12'0"	117 sq. ft	Yes
10	Entry	3'3" x 3'11"	35 sq. ft	Yes
11	Hall	16'6" x 3'1"	51 sq. ft	Yes
12	Bath	9'8" x 10'0"	75 sq. ft	Yes
13	Bedroom	11'10" x 23'0"	256 sq. ft	Yes
14	Foyer	4'2" x 13'6"	56 sq. ft	Yes
15	Bedroom	11'4" x 11'8"	133 sq. ft	Yes
16	Bath	6'7" x 11'8"	76 sq. ft	Yes
17	Living Room	13'7" x 20'10"	278 sq. ft	Yes

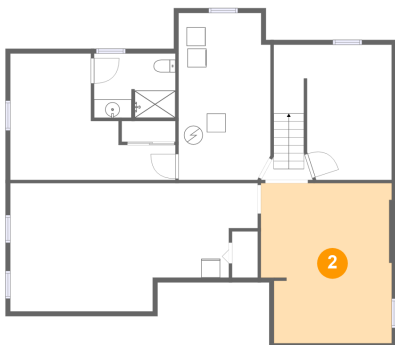
## 1 Floor 1 - Bedroom



Dimensions: 17'8" x 13'6"  
Area: 158 sq. ft  
Counted as living area: Yes

Heated: Yes  
Finished: Yes  
Enclosed: Yes  
Contiguous: Yes  
Permitted: Yes  
Wet space: No  
Addition: No  
Conversion: No

## 2 Floor 1 - Family Room

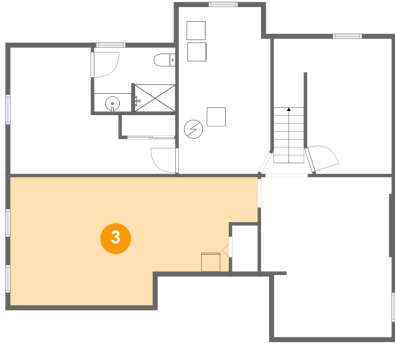


Dimensions: 13'11" x 17'1"  
Area: 227 sq. ft  
Counted as living area: No

Heated: Yes  
Finished: Yes  
Enclosed: Yes  
Contiguous: No  
Permitted: Yes  
Wet space: No  
Addition: No  
Conversion: No

# 1035 N 10th St, Spearfish, SD, US

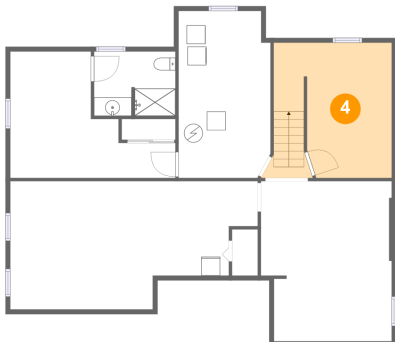
## 3 Floor 1 - Recreation Room



Dimensions: 26'5" x 13'8"  
Area: 305 sq. ft  
Counted as living area: No

Heated: Yes  
Finished: No  
Enclosed: Yes  
Contiguous: Yes  
Permitted: Yes  
Wet space: No  
Addition: No  
Conversion: No

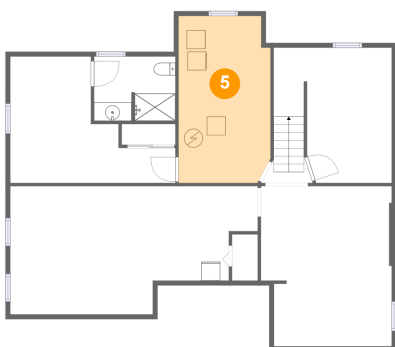
## 4 Floor 1 - Storage



Dimensions: 12'7" x 14'5"  
Area: 180 sq. ft  
Counted as living area: No

Heated: No  
Finished: No  
Enclosed: No  
Contiguous: Yes  
Permitted: Yes  
Wet space: No  
Addition: No  
Conversion: No

## 5 Floor 1 - Utility

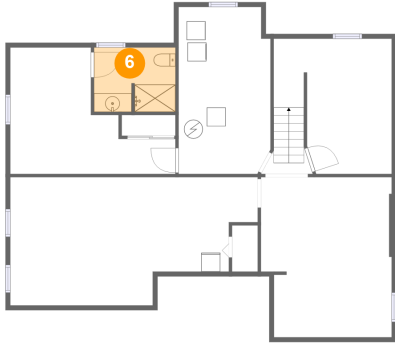


Dimensions: 9'10" x 17'10"  
Area: 170 sq. ft  
Counted as living area: No

Heated: Yes  
Finished: No  
Enclosed: Yes  
Contiguous: Yes  
Permitted: Yes  
Wet space: No  
Addition: No  
Conversion: No

# 1035 N 10th St, Spearfish, SD, US

## 6 Floor 1 - Bath



Dimensions: 8'8" x 6'10"  
Area: 59 sq. ft  
Counted as living area: Yes

Heated: Yes  
Finished: Yes  
Enclosed: Yes  
Contiguous: Yes  
Permitted: Yes  
Wet space: Yes  
Addition: No  
Conversion: No

## 7 Floor 2 - Kitchen



Dimensions: 10'2" x 15'7"  
Area: 144 sq. ft  
Counted as living area: Yes

Heated: Yes  
Finished: Yes  
Enclosed: Yes  
Contiguous: Yes  
Permitted: Yes  
Wet space: No  
Addition: No  
Conversion: No

## 8 Floor 2 - Primary Bedroom



Dimensions: 15'6" x 14'0"  
Area: 204 sq. ft  
Counted as living area: Yes

Heated: Yes  
Finished: Yes  
Enclosed: Yes  
Contiguous: Yes  
Permitted: Yes  
Wet space: No  
Addition: No  
Conversion: No

**9** Floor 2 - Dining Area



Dimensions: 9'8" x 12'0"  
Area: 117 sq. ft  
Counted as living area: Yes

Heated: Yes  
Finished: Yes  
Enclosed: Yes  
Contiguous: Yes  
Permitted: Yes  
Wet space: No  
Addition: No  
Conversion: No

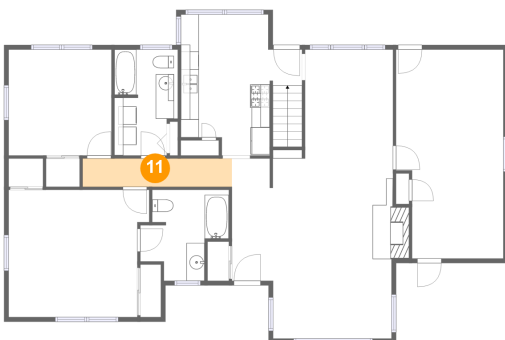
**10** Floor 2 - Entry



Dimensions: 3'3" x 3'11"  
Area: 35 sq. ft  
Counted as living area: Yes

Heated: Yes  
Finished: Yes  
Enclosed: Yes  
Contiguous: Yes  
Permitted: Yes  
Wet space: No  
Addition: No  
Conversion: No

**11** Floor 2 - Hall



Dimensions: 16'6" x 3'1"  
Area: 51 sq. ft  
Counted as living area: Yes

Heated: Yes  
Finished: Yes  
Enclosed: Yes  
Contiguous: Yes  
Permitted: Yes  
Wet space: No  
Addition: No  
Conversion: No

# 1035 N 10th St, Spearfish, SD, US

## 12 Floor 2 - Bath



Dimensions: 9'8" x 10'0"  
Area: 75 sq. ft  
Counted as living area: Yes

Heated: Yes  
Finished: Yes  
Enclosed: Yes  
Contiguous: Yes  
Permitted: Yes  
Wet space: Yes  
Addition: No  
Conversion: No

## 13 Floor 2 - Bedroom



Dimensions: 11'10" x 23'0"  
Area: 256 sq. ft  
Counted as living area: Yes

Heated: Yes  
Finished: Yes  
Enclosed: Yes  
Contiguous: Yes  
Permitted: Yes  
Wet space: No  
Addition: No  
Conversion: No

## 14 Floor 2 - Foyer



Dimensions: 4'2" x 13'6"  
Area: 56 sq. ft  
Counted as living area: Yes

Heated: Yes  
Finished: Yes  
Enclosed: Yes  
Contiguous: Yes  
Permitted: Yes  
Wet space: No  
Addition: No  
Conversion: No



# 1035 N 10th St, Spearfish, SD, US

## 15 Floor 2 - Bedroom



Dimensions: 11'4" x 11'8"  
Area: 133 sq. ft  
Counted as living area: Yes

Heated: Yes  
Finished: Yes  
Enclosed: Yes  
Contiguous: Yes  
Permitted: Yes  
Wet space: No  
Addition: No  
Conversion: No

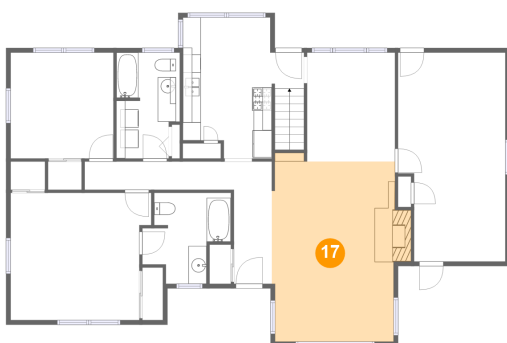
## 16 Floor 2 - Bath



Dimensions: 6'7" x 11'8"  
Area: 76 sq. ft  
Counted as living area: Yes

Heated: Yes  
Finished: Yes  
Enclosed: Yes  
Contiguous: Yes  
Permitted: Yes  
Wet space: Yes  
Addition: No  
Conversion: No

## 17 Floor 2 - Living Room



Dimensions: 13'7" x 20'10"  
Area: 278 sq. ft  
Counted as living area: Yes

Heated: Yes  
Finished: Yes  
Enclosed: Yes  
Contiguous: Yes  
Permitted: Yes  
Wet space: No  
Addition: No  
Conversion: No