

Home data report

19943 Silverside Drive, Tinley Park, Illinois 60487, United States



Total Area: 2850 sq. ft

Basement: 0 sq. ft, 1st Floor: 1443 sq. ft, 2nd Floor: 1407 sq. ft

Excluded: Basement 1443 sq. ft, Garage 462 sq. ft, Patio 111 sq. ft, Porch 172 sq. ft, Utility 15 sq. ft, Open to below 75 sq. ft, Walls: 299 sq. ft

Property summary

 **3** Floors

 **5** Bedrooms

 **2** Bathrooms

Home data report

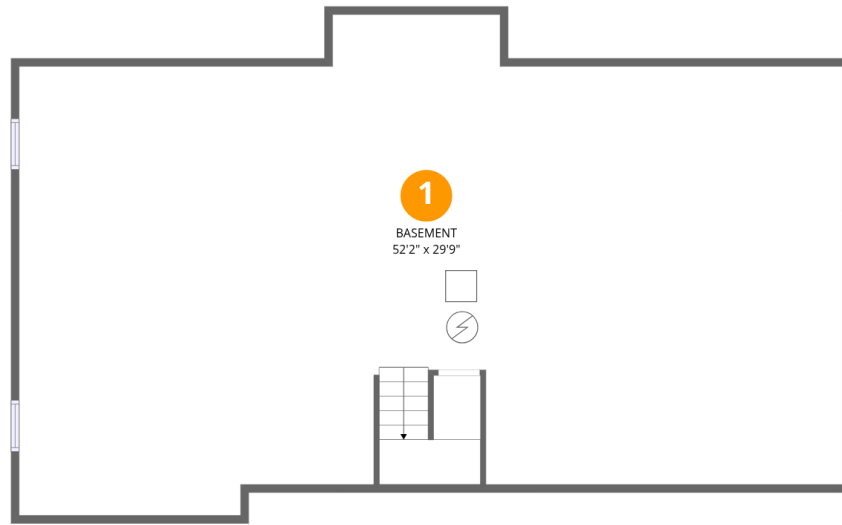
19943 Silverside Drive, Tinley Park, Illinois 60487, United States

 **1**
Half baths

 **1**
Garages

Home data report

19943 Silverside Drive, Tinley Park, Illinois 60487, United States



Room dimensions

Floor 1 Below grade

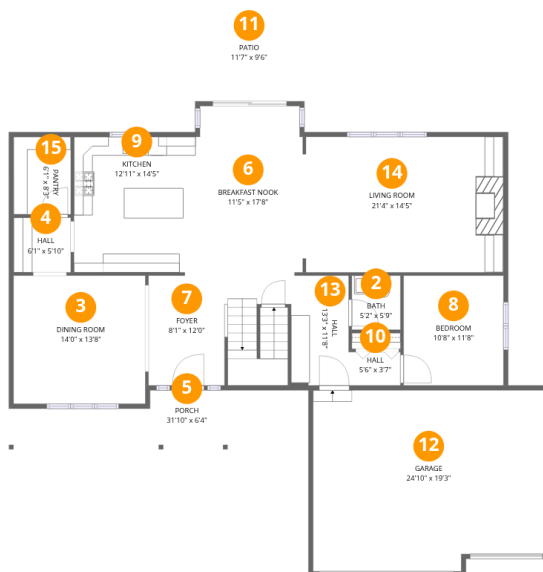
Total:0sqft

Excluded: 1443sqft

#		Dimensions	sqft	Counted as living area
1	Basement	52'2" x 29'9"	1436 sq. ft	No

Home data report

19943 Silverside Drive, Tinley Park, Illinois 60487, United States



Room dimensions

Floor 2

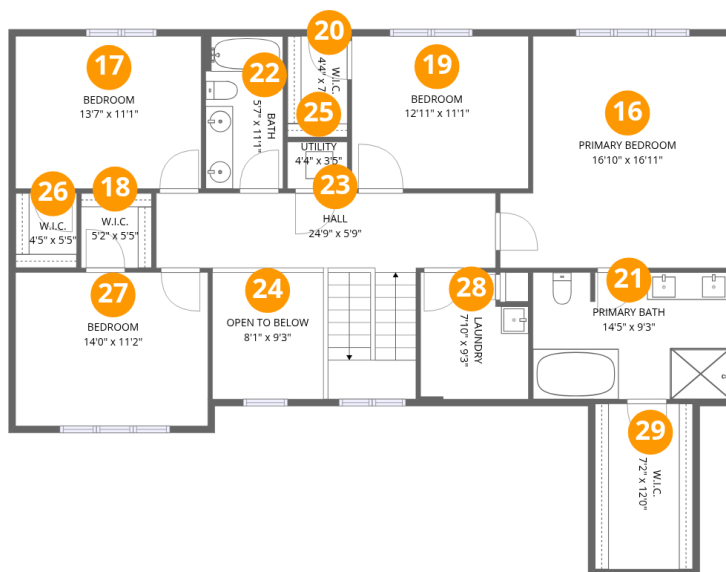
Total:1443sqft Excluded: 745sqft

#		Dimensions	sqft	Counted as living area
2	Bath	5'2" x 5'9"	30 sq. ft	Yes
3	Dining Room	14'0" x 13'8"	192 sq. ft	Yes
4	Hall	6'1" x 5'10"	36 sq. ft	Yes
5	Porch	31'10" x 6'4"	172 sq. ft	No
6	Breakfast Nook	11'5" x 17'8"	200 sq. ft	Yes
7	Foyer	8'1" x 12'0"	96 sq. ft	Yes
8	Bedroom	10'8" x 11'8"	125 sq. ft	Yes
9	Kitchen	12'11" x 14'5"	187 sq. ft	Yes
10	Hall	5'6" x 3'7"	20 sq. ft	Yes
11	Patio	11'7" x 9'6"	111 sq. ft	No
12	Garage	24'10" x 19'3"	462 sq. ft	No

Home data report

19943 Silverside Drive, Tinley Park, Illinois 60487, United States

#		Dimensions	sqft	Counted as living area
13	Hall	13'3" x 11'8"	150 sq. ft	Yes
14	Living Room	21'4" x 14'5"	307 sq. ft	Yes
15	Pantry	6'1" x 8'3"	50 sq. ft	Yes



Room dimensions

Floor 3

Total:1407sqft Excluded: 90sqft

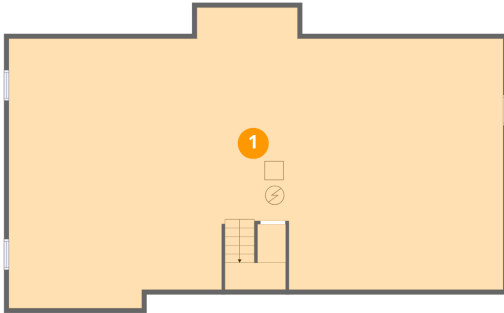
#		Dimensions	sqft	Counted as living area
16	Primary Bedroom	16'10" x 16'11"	257 sq. ft	Yes
17	Bedroom	13'7" x 11'1"	151 sq. ft	Yes
18	W.I.C.	5'2" x 5'5"	28 sq. ft	Yes
19	Bedroom	12'11" x 11'1"	143 sq. ft	Yes
20	W.I.C.	4'4" x 7'4"	32 sq. ft	Yes
21	Primary Bath	14'5" x 9'3"	132 sq. ft	Yes
22	Bath	5'7" x 11'1"	63 sq. ft	Yes
23	Hall	24'9" x 5'9"	202 sq. ft	Yes
24	Open To Below	8'1" x 9'3"	75 sq. ft	No
25	Utility	4'4" x 3'5"	15 sq. ft	No
26	W.I.C.	4'5" x 5'5"	24 sq. ft	Yes

Home data report

19943 Silverside Drive, Tinley Park, Illinois 60487, United States

#		Dimensions	sqft	Counted as living area
27	Bedroom	14'0" x 11'2"	157 sq. ft	Yes
28	Laundry	7'10" x 9'3"	67 sq. ft	Yes
29	W.I.C.	7'2" x 12'0"	86 sq. ft	Yes

1 Floor 1 - Basement



Dimensions: 52'2" x 29'9"
Area: 1436 sq. ft
Counted as living area: No

Heated: Yes
Finished: No
Enclosed: Yes
Contiguous: Yes
Permitted: Yes
Wet space: No
Addition: No
Conversion: No

2 Floor 2 - Bath



Dimensions: 5'2" x 5'9"
Area: 30 sq. ft
Counted as living area: Yes

Heated: Yes
Finished: Yes
Enclosed: Yes
Contiguous: Yes
Permitted: Yes
Wet space: Yes
Addition: No
Conversion: No

3 Floor 2 - Dining Room



Dimensions: 14'0" x 13'8"
Area: 192 sq. ft
Counted as living area: Yes

Heated: Yes
Finished: Yes
Enclosed: Yes
Contiguous: Yes
Permitted: Yes
Wet space: No
Addition: No
Conversion: No

4 Floor 2 - Hall



Dimensions: 6'1" x 5'10"
Area: 36 sq. ft
Counted as living area: Yes

Heated: Yes
Finished: Yes
Enclosed: Yes
Contiguous: Yes
Permitted: Yes
Wet space: No
Addition: No
Conversion: No

5 Floor 2 - Porch



Dimensions: 31'10" x 6'4"
Area: 172 sq. ft
Counted as living area: No

Heated: No
Finished: No
Enclosed: No
Contiguous: Yes
Permitted: Yes
Wet space: No
Addition: No
Conversion: No

6 Floor 2 - Breakfast Nook



Dimensions: 11'5" x 17'8"
Area: 200 sq. ft
Counted as living area: Yes

Heated: Yes
Finished: Yes
Enclosed: Yes
Contiguous: Yes
Permitted: Yes
Wet space: No
Addition: No
Conversion: No

7 Floor 2 - Foyer



Dimensions: 8'1" x 12'0"
Area: 96 sq. ft
Counted as living area: Yes

Heated: Yes
Finished: Yes
Enclosed: Yes
Contiguous: Yes
Permitted: Yes
Wet space: No
Addition: No
Conversion: No

8 Floor 2 - Bedroom



Dimensions: 10'8" x 11'8"
Area: 125 sq. ft
Counted as living area: Yes

Heated: Yes
Finished: Yes
Enclosed: Yes
Contiguous: Yes
Permitted: Yes
Wet space: No
Addition: No
Conversion: No

9 Floor 2 - Kitchen



Dimensions: 12'11" x 14'5"
Area: 187 sq. ft
Counted as living area: Yes

Heated: Yes
Finished: Yes
Enclosed: Yes
Contiguous: Yes
Permitted: Yes
Wet space: No
Addition: No
Conversion: No

10 Floor 2 - Hall



Dimensions: 5'6" x 3'7"
Area: 20 sq. ft
Counted as living area: Yes

Heated: Yes
Finished: Yes
Enclosed: Yes
Contiguous: Yes
Permitted: Yes
Wet space: No
Addition: No
Conversion: No

11 Floor 2 - Patio



Dimensions: 11'7" x 9'6"
Area: 111 sq. ft
Counted as living area: No

Heated: No
Finished: No
Enclosed: No
Contiguous: Yes
Permitted: Yes
Wet space: No
Addition: No
Conversion: No

12 Floor 2 - Garage



Dimensions: 24'10" x 19'3"
Area: 462 sq. ft
Counted as living area: No

Heated: No
Finished: No
Enclosed: Yes
Contiguous: Yes
Permitted: Yes
Wet space: No
Addition: No
Conversion: No

13 Floor 2 - Hall



Dimensions: 13'3" x 11'8"
Area: 150 sq. ft
Counted as living area: Yes

Heated: Yes
Finished: Yes
Enclosed: Yes
Contiguous: Yes
Permitted: Yes
Wet space: No
Addition: No
Conversion: No

14 Floor 2 - Living Room



Dimensions: 21'4" x 14'5"
Area: 307 sq. ft
Counted as living area: Yes

Heated: Yes
Finished: Yes
Enclosed: Yes
Contiguous: Yes
Permitted: Yes
Wet space: No
Addition: No
Conversion: No

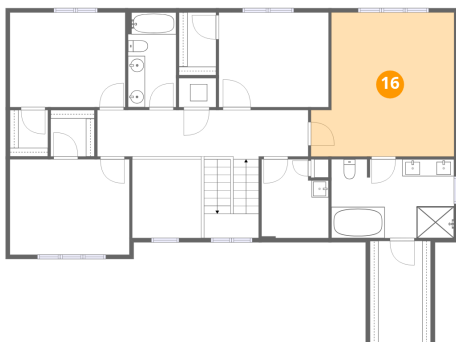
15 Floor 2 - Pantry



Dimensions: 6'1" x 8'3"
Area: 50 sq. ft
Counted as living area: Yes

Heated: Yes
Finished: Yes
Enclosed: Yes
Contiguous: Yes
Permitted: Yes
Wet space: No
Addition: No
Conversion: No

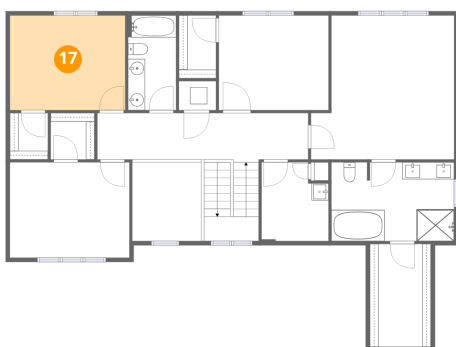
16 Floor 3 - Primary Bedroom



Dimensions: 16'10" x 16'11"
Area: 257 sq. ft
Counted as living area: Yes

Heated: Yes
Finished: Yes
Enclosed: Yes
Contiguous: Yes
Permitted: Yes
Wet space: No
Addition: No
Conversion: No

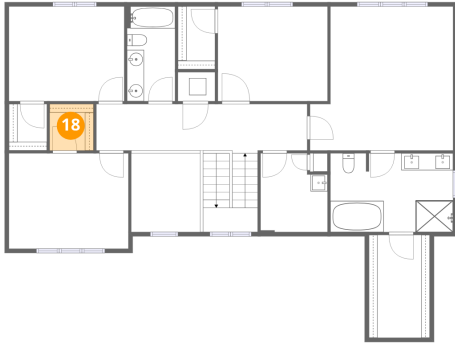
17 Floor 3 - Bedroom



Dimensions: 13'7" x 11'1"
Area: 151 sq. ft
Counted as living area: Yes

Heated: Yes
Finished: Yes
Enclosed: Yes
Contiguous: Yes
Permitted: Yes
Wet space: No
Addition: No
Conversion: No

18 Floor 3 - W.I.C.



Dimensions: 5'2" x 5'5"
Area: 28 sq. ft
Counted as living area: Yes

Heated: Yes
Finished: Yes
Enclosed: Yes
Contiguous: Yes
Permitted: Yes
Wet space: No
Addition: No
Conversion: No

19 Floor 3 - Bedroom



Dimensions: 12'11" x 11'1"
Area: 143 sq. ft
Counted as living area: Yes

Heated: Yes
Finished: Yes
Enclosed: Yes
Contiguous: Yes
Permitted: Yes
Wet space: No
Addition: No
Conversion: No

20 Floor 3 - W.I.C.



Dimensions: 4'4" x 7'4"
Area: 32 sq. ft
Counted as living area: Yes

Heated: Yes
Finished: Yes
Enclosed: Yes
Contiguous: Yes
Permitted: Yes
Wet space: No
Addition: No
Conversion: No

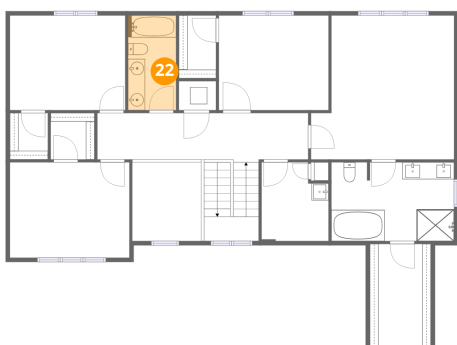
21 Floor 3 - Primary Bath



Dimensions: 14'5" x 9'3"
Area: 132 sq. ft
Counted as living area: Yes

Heated: Yes
Finished: Yes
Enclosed: Yes
Contiguous: Yes
Permitted: Yes
Wet space: Yes
Addition: No
Conversion: No

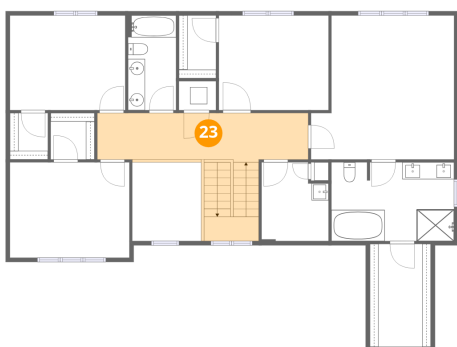
22 Floor 3 - Bath



Dimensions: 5'7" x 11'1"
Area: 63 sq. ft
Counted as living area: Yes

Heated: Yes
Finished: Yes
Enclosed: Yes
Contiguous: Yes
Permitted: Yes
Wet space: Yes
Addition: No
Conversion: No

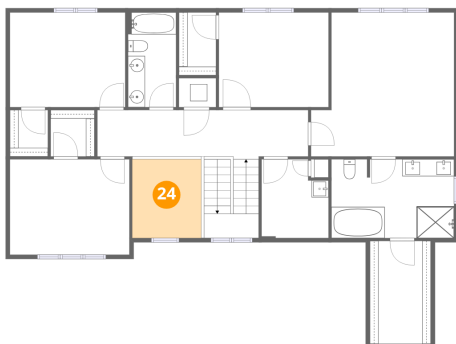
23 Floor 3 - Hall



Dimensions: 24'9" x 5'9"
Area: 202 sq. ft
Counted as living area: Yes

Heated: Yes
Finished: Yes
Enclosed: Yes
Contiguous: Yes
Permitted: Yes
Wet space: No
Addition: No
Conversion: No

24 Floor 3 - Open To Below



Dimensions: 8'1" x 9'3"
Area: 75 sq. ft
Counted as living area: No

Heated: No
Finished: No
Enclosed: No
Contiguous: Yes
Permitted: No
Wet space: No
Addition: No
Conversion: No

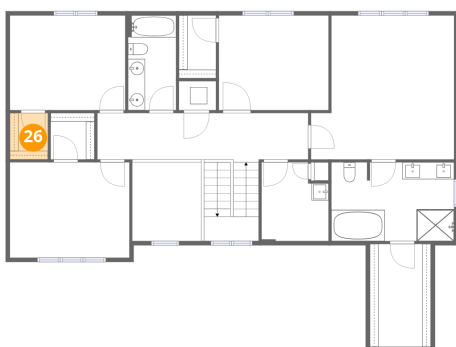
25 Floor 3 - Utility



Dimensions: 4'4" x 3'5"
Area: 15 sq. ft
Counted as living area: No

Heated: Yes
Finished: No
Enclosed: Yes
Contiguous: Yes
Permitted: Yes
Wet space: No
Addition: No
Conversion: No

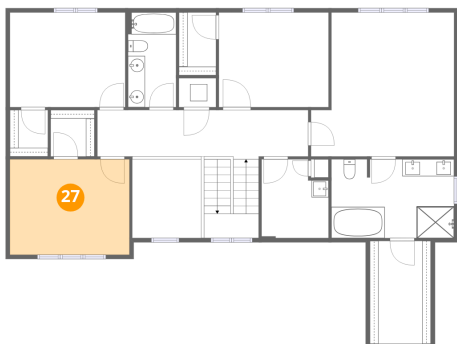
26 Floor 3 - W.I.C.



Dimensions: 4'5" x 5'5"
Area: 24 sq. ft
Counted as living area: Yes

Heated: Yes
Finished: Yes
Enclosed: Yes
Contiguous: Yes
Permitted: Yes
Wet space: No
Addition: No
Conversion: No

27 Floor 3 - Bedroom



Dimensions: 14'0" x 11'2"
Area: 157 sq. ft
Counted as living area: Yes

Heated: Yes
Finished: Yes
Enclosed: Yes
Contiguous: Yes
Permitted: Yes
Wet space: No
Addition: No
Conversion: No

28 Floor 3 - Laundry



Dimensions: 7'10" x 9'3"
Area: 67 sq. ft
Counted as living area: Yes

Heated: Yes
Finished: Yes
Enclosed: Yes
Contiguous: Yes
Permitted: Yes
Wet space: No
Addition: No
Conversion: No

29 Floor 3 - W.I.C.



Dimensions: 7'2" x 12'0"
Area: 86 sq. ft
Counted as living area: Yes

Heated: Yes
Finished: Yes
Enclosed: Yes
Contiguous: Yes
Permitted: Yes
Wet space: No
Addition: No
Conversion: No