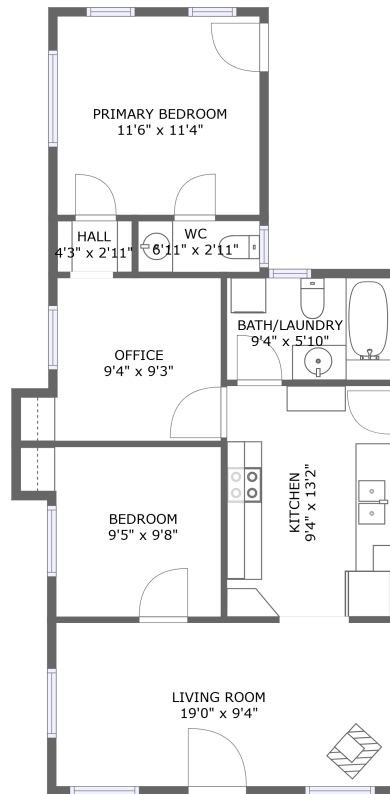


# 1601 Pacific Avenue, Forest Grove, Washington County, Oregon, United States, 97116




FLOOR 1

## Property Summary


 **0** garages


 **2** bedrooms

 **1** bathrooms

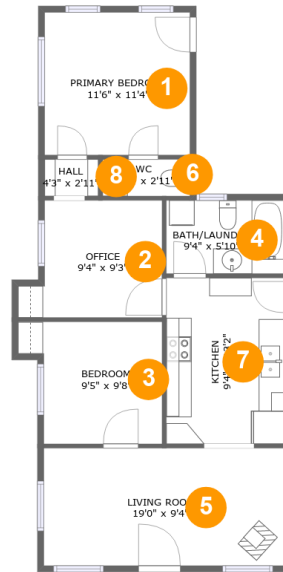
 **1** half baths

 **1** floors

 **798**  
Gross Living  
Area sqft

 **798**  
total sqft

# 1601 Pacific Avenue, Forest Grove, Washington County, Oregon, United States, 97116



## Room Dimensions

Floor 1

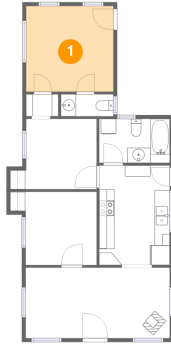
Total sqft: 798

Living area: 798

#	Room name	Dimensions	Area (sqft)	Counted as Living Area
1	Primary Bedroom	11'6" x 11'4"	130 sq. ft	Yes
2	Office	9'4" x 9'3"	92 sq. ft	Yes
3	Bedroom	9'5" x 9'8"	96 sq. ft	Yes
4	BATH/LAUNDRY	9'4" x 5'10"	54 sq. ft	Yes
5	Living Room	19'0" x 9'4"	177 sq. ft	Yes
6	Wc	6'11" x 2'11"	20 sq. ft	Yes
7	Kitchen	9'4" x 13'2"	123 sq. ft	Yes
8	Hall	4'3" x 2'11"	12 sq. ft	Yes

# 1601 Pacific Avenue, Forest Grove, Washington County, Oregon, United States, 97116

## 1 Floor 1 - Primary Bedroom



**Dimensions:** 11'6" x 11'4"  
**Area:** 130 sq. ft  
**Counted as Living Area:**  
Yes

**Heated:** Yes  
**Finished:** Yes  
**Enclosed:** Yes  
**Contiguous:**  
Yes  
**Permitted:** Yes  
**Wet Space:** No  
**Addition:** No  
**Conversion:** No

## 2 Floor 1 - Office



**Dimensions:** 9'4" x 9'3"  
**Area:** 92 sq. ft  
**Counted as Living Area:**  
Yes

**Heated:** Yes  
**Finished:** Yes  
**Enclosed:** Yes  
**Contiguous:**  
Yes  
**Permitted:** Yes  
**Wet Space:** No  
**Addition:** No  
**Conversion:** No

# 1601 Pacific Avenue, Forest Grove, Washington County, Oregon, United States, 97116

## 3 Floor 1 - Bedroom



Dimensions: 9'5" x 9'8"  
Area: 96 sq. ft  
Counted as Living Area:  
Yes

Heated: Yes  
Finished: Yes  
Enclosed: Yes  
Contiguous:  
Yes  
Permitted: Yes  
Wet Space: No  
Addition: No  
Conversion: No

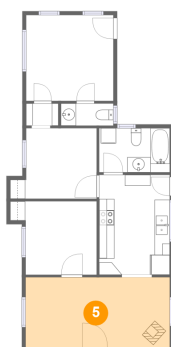
## 4 Floor 1 - BATH/LAUNDRY



Dimensions: 9'4" x 5'10"  
Area: 54 sq. ft  
Counted as Living Area:  
Yes

Heated: Yes  
Finished: Yes  
Enclosed: Yes  
Contiguous:  
Yes  
Permitted: Yes  
Wet Space: Yes  
Addition: No  
Conversion: No

## 5 Floor 1 - Living Room

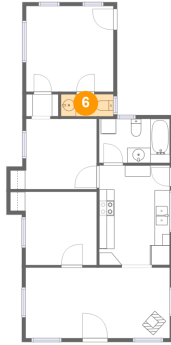


Dimensions: 19'0" x 9'4"  
Area: 177 sq. ft  
Counted as Living Area:  
Yes

Heated: Yes  
Finished: Yes  
Enclosed: Yes  
Contiguous:  
Yes  
Permitted: Yes  
Wet Space: No  
Addition: No  
Conversion: No

# 1601 Pacific Avenue, Forest Grove, Washington County, Oregon, United States, 97116

## 6 Floor 1 - Wc



Dimensions: 6'11" x 2'11"  
Area: 20 sq. ft  
Counted as Living Area:  
Yes

Heated: Yes  
Finished: Yes  
Enclosed: Yes  
Contiguous:  
Yes  
Permitted: Yes  
Wet Space: Yes  
Addition: No  
Conversion: No

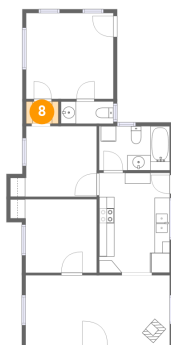
## 7 Floor 1 - Kitchen



Dimensions: 9'4" x 13'2"  
Area: 123 sq. ft  
Counted as Living Area:  
Yes

Heated: Yes  
Finished: Yes  
Enclosed: Yes  
Contiguous:  
Yes  
Permitted: Yes  
Wet Space: No  
Addition: No  
Conversion: No

## 8 Floor 1 - Hall



Dimensions: 4'3" x 2'11"  
Area: 12 sq. ft  
Counted as Living Area:  
Yes

Heated: Yes  
Finished: Yes  
Enclosed: Yes  
Contiguous:  
Yes  
Permitted: Yes  
Wet Space: No  
Addition: No  
Conversion: No