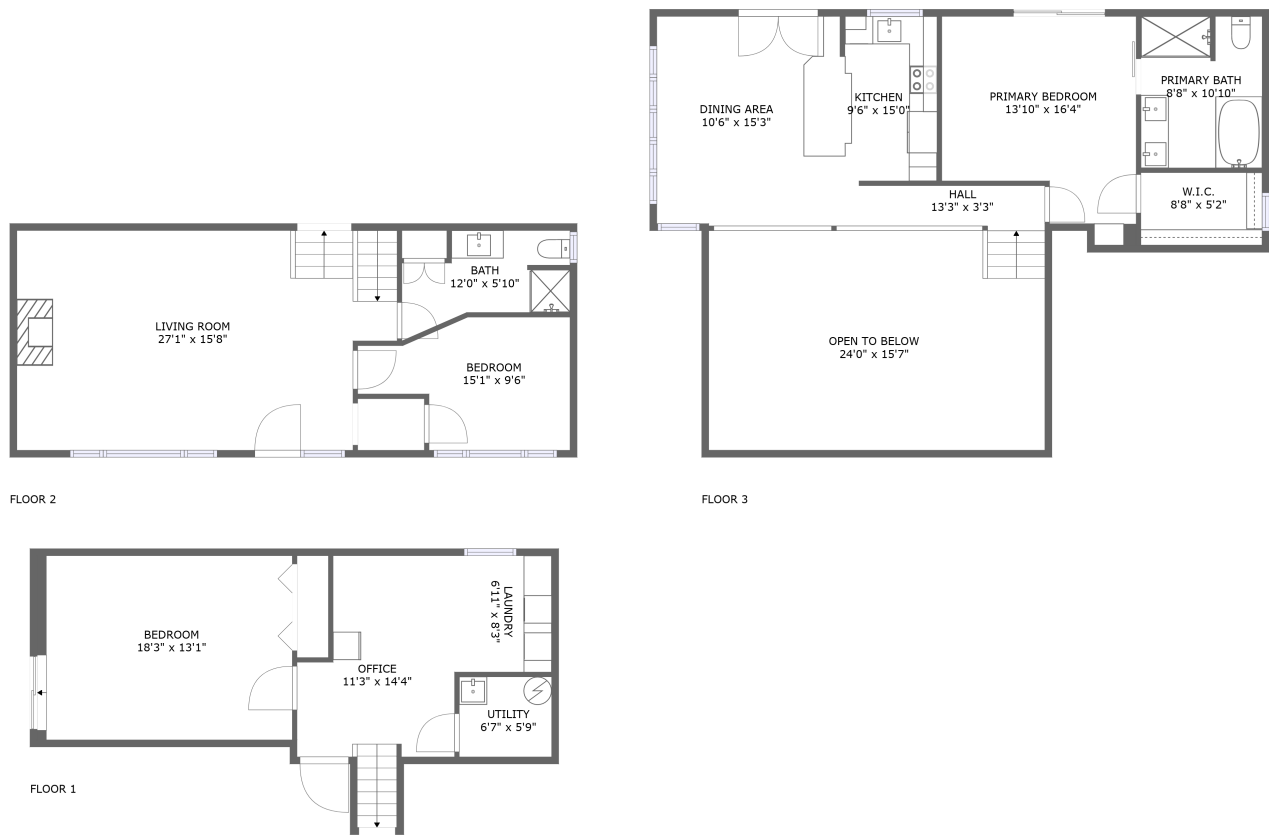


Home report

9 Skebo Lane, Renfrew, Renfrew County, Ontario, Canada, K7V 3Z8



Total Area: 1304 sq. ft
Below Ground: 481 sq. ft, Floor 2: 619 sq. ft, Floor 3: 685 sq. ft
Excluded: Utility 38 sq. ft, Open to below 361 sq. ft, Walls: 189 sq. ft

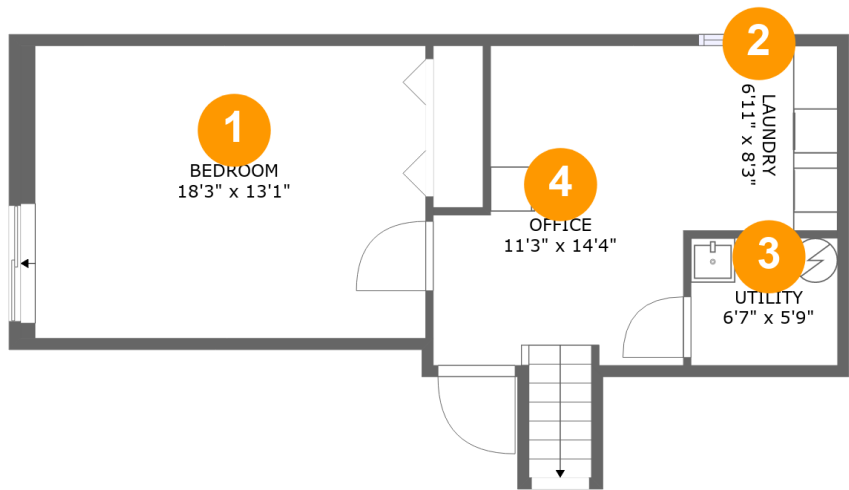
Property summary

 **3** Floors

 **3** Bedrooms

 **2** Bathrooms

9 Skebo Lane, Renfrew, Renfrew County, Ontario, Canada, K7V 3Z8



Room dimensions

Floor 1 Below ground Total:481sqft Excluded: 38sqft

#		Max Dimensions	sqft	Included
1	Bedroom	18'3" x 13'1"	240 sq. ft	Yes
2	Laundry	6'11" x 8'3"	58 sq. ft	Yes
3	Utility	6'7" x 5'9"	38 sq. ft	No
4	Office	11'3" x 14'4"	156 sq. ft	Yes

Home report

9 Skebo Lane, Renfrew, Renfrew County, Ontario, Canada, K7V 3Z8



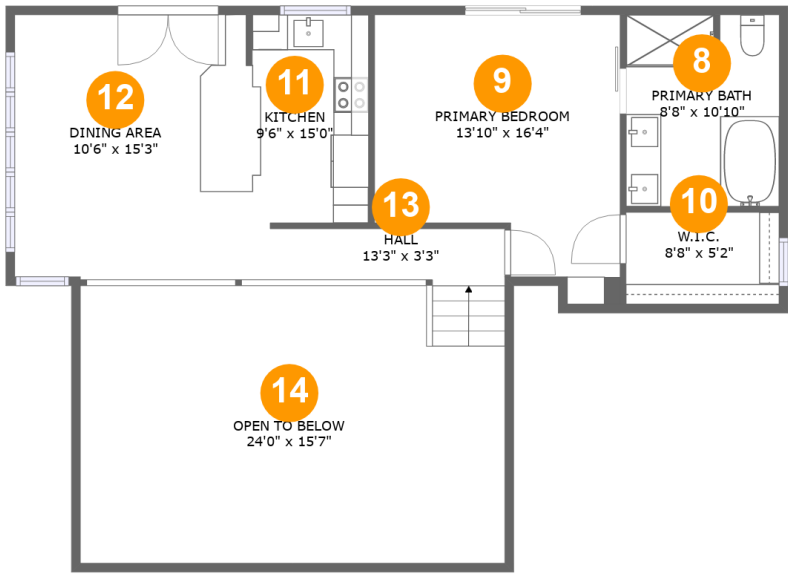
Room dimensions

Floor 2 Total:619sqft Excluded: 0sqft

#		Max Dimensions	sqft	Included
5	Bedroom	15'1" x 9'6"	112 sq. ft	Yes
6	Bath	12'0" x 5'10"	66 sq. ft	Yes
7	Living Room	27'1" x 15'8"	401 sq. ft	Yes

Home report

9 Skebo Lane, Renfrew, Renfrew County, Ontario, Canada, K7V 3Z8



Room dimensions

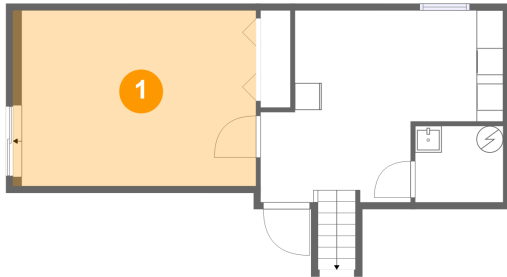
Floor 3

Total:685sqft Excluded: 361sqft

#		Max Dimensions	sqft	Included
8	Primary Bath	8'8" x 10'10"	93 sq. ft	Yes
9	Primary Bedroom	13'10" x 16'4"	186 sq. ft	Yes
10	W.I.C.	8'8" x 5'2"	45 sq. ft	Yes
11	Kitchen	9'6" x 15'0"	125 sq. ft	Yes
12	Dining Area	10'6" x 15'3"	159 sq. ft	Yes
13	Hall	13'3" x 3'3"	58 sq. ft	Yes
14	Open To Below	24'0" x 15'7"	361 sq. ft	No

9 Skebo Lane, Renfrew, Renfrew County, Ontario, Canada, K7V 3Z8

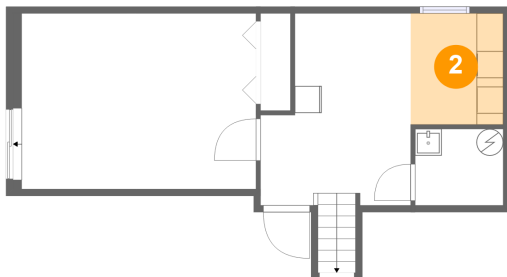
1 Floor 1 - Bedroom



Max Dimensions: 18'3" x 13'1"
Calculated Area: 240 sq. ft
Included: Yes

Heated: Yes
Finished: Yes
Enclosed: Yes
Contiguous: Yes
Permitted: Yes
Wet space: No
Addition: No
Conversion: No

2 Floor 1 - Laundry

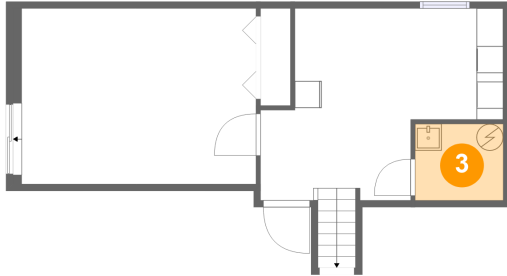


Max Dimensions: 6'11" x 8'3"
Calculated Area: 58 sq. ft
Included: Yes

Heated: Yes
Finished: Yes
Enclosed: Yes
Contiguous: Yes
Permitted: Yes
Wet space: No
Addition: No
Conversion: No

9 Skebo Lane, Renfrew, Renfrew County, Ontario, Canada, K7V 3Z8

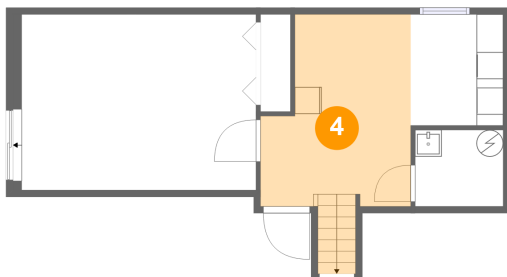
3 Floor 1 - Utility



Max Dimensions: 6'7" x 5'9"
Calculated Area: 38 sq. ft
Included: No

Heated: Yes
Finished: No
Enclosed: Yes
Contiguous: Yes
Permitted: Yes
Wet space: No
Addition: No
Conversion: No

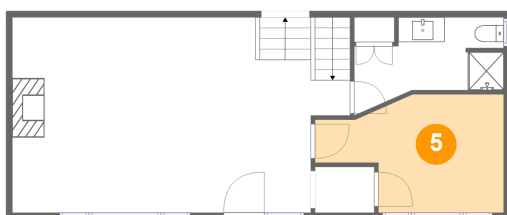
4 Floor 1 - Office



Max Dimensions: 11'3" x 14'4"
Calculated Area: 156 sq. ft
Included: Yes

Heated: Yes
Finished: Yes
Enclosed: Yes
Contiguous: Yes
Permitted: Yes
Wet space: No
Addition: No
Conversion: No

5 Floor 2 - Bedroom

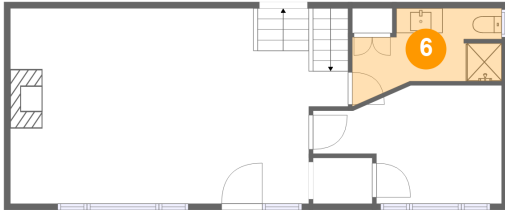


Max Dimensions: 15'1" x 9'6"
Calculated Area: 112 sq. ft
Included: Yes

Heated: Yes
Finished: Yes
Enclosed: Yes
Contiguous: Yes
Permitted: Yes
Wet space: No
Addition: No
Conversion: No

9 Skebo Lane, Renfrew, Renfrew County, Ontario, Canada, K7V 3Z8

6 Floor 2 - Bath



Max Dimensions: 12'0" x 5'10"
Calculated Area: 66 sq. ft
Included: Yes

Heated: Yes
Finished: Yes
Enclosed: Yes
Contiguous: Yes
Permitted: Yes
Wet space: Yes
Addition: No
Conversion: No

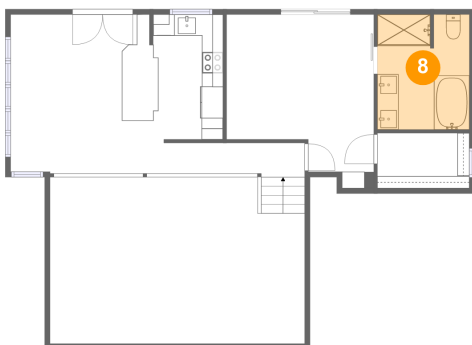
7 Floor 2 - Living Room



Max Dimensions: 27'1" x 15'8"
Calculated Area: 401 sq. ft
Included: Yes

Heated: Yes
Finished: Yes
Enclosed: Yes
Contiguous: Yes
Permitted: Yes
Wet space: No
Addition: No
Conversion: No

8 Floor 3 - Primary Bath

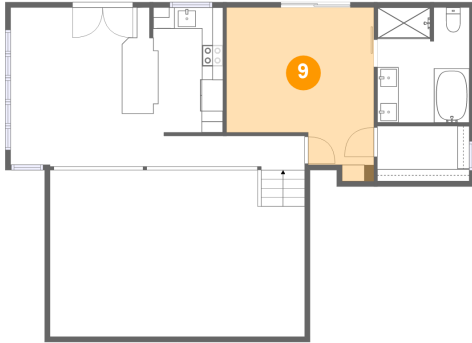


Max Dimensions: 8'8" x 10'10"
Calculated Area: 93 sq. ft
Included: Yes

Heated: Yes
Finished: Yes
Enclosed: Yes
Contiguous: Yes
Permitted: Yes
Wet space: Yes
Addition: No
Conversion: No

9 Skebo Lane, Renfrew, Renfrew County, Ontario, Canada, K7V 3Z8

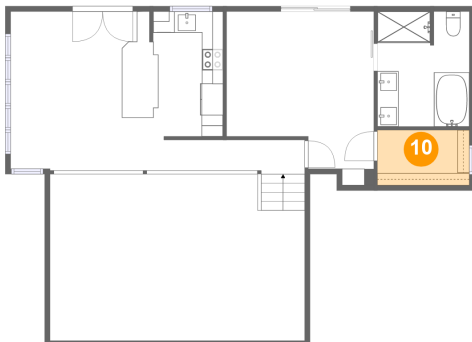
9 Floor 3 - Primary Bedroom



Max Dimensions: 13'10" x 16'4"
Calculated Area: 186 sq. ft
Included: Yes

Heated: Yes
Finished: Yes
Enclosed: Yes
Contiguous: Yes
Permitted: Yes
Wet space: No
Addition: No
Conversion: No

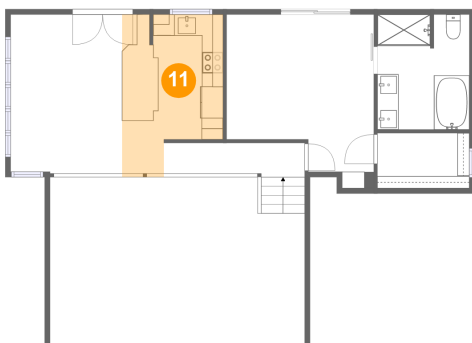
10 Floor 3 - W.I.C.



Max Dimensions: 8'8" x 5'2"
Calculated Area: 45 sq. ft
Included: Yes

Heated: Yes
Finished: Yes
Enclosed: Yes
Contiguous: Yes
Permitted: Yes
Wet space: No
Addition: No
Conversion: No

11 Floor 3 - Kitchen

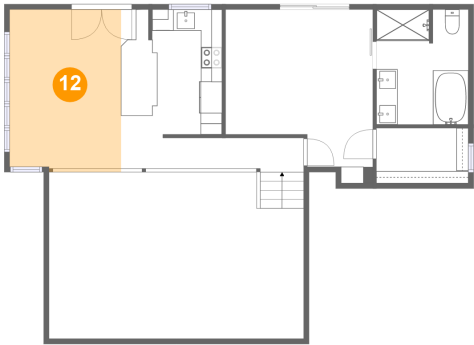


Max Dimensions: 9'6" x 15'0"
Calculated Area: 125 sq. ft
Included: Yes

Heated: Yes
Finished: Yes
Enclosed: Yes
Contiguous: Yes
Permitted: Yes
Wet space: No
Addition: No
Conversion: No

9 Skebo Lane, Renfrew, Renfrew County, Ontario, Canada, K7V 3Z8

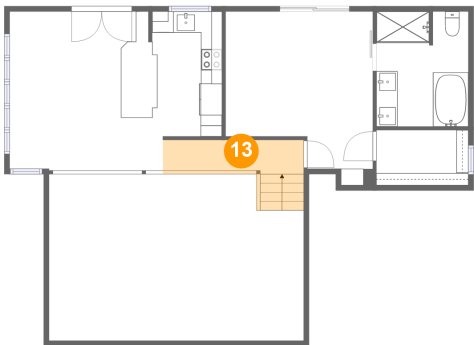
12 Floor 3 - Dining Area



Max Dimensions: 10'6" x 15'3"
Calculated Area: 159 sq. ft
Included: Yes

Heated: Yes
Finished: Yes
Enclosed: Yes
Contiguous: Yes
Permitted: Yes
Wet space: No
Addition: No
Conversion: No

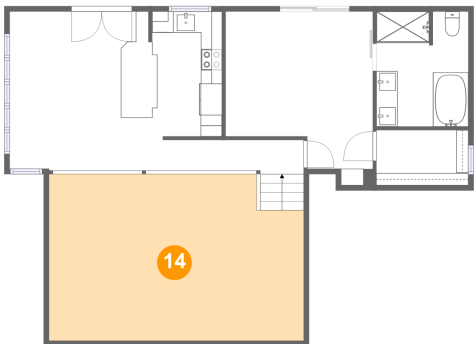
13 Floor 3 - Hall



Max Dimensions: 13'3" x 3'3"
Calculated Area: 58 sq. ft
Included: Yes

Heated: Yes
Finished: Yes
Enclosed: Yes
Contiguous: Yes
Permitted: Yes
Wet space: No
Addition: No
Conversion: No

14 Floor 3 - Open To Below



Max Dimensions: 24'0" x 15'7"
Calculated Area: 361 sq. ft
Included: No

Heated: No
Finished: No
Enclosed: No
Contiguous: Yes
Permitted: No
Wet space: No
Addition: No
Conversion: No