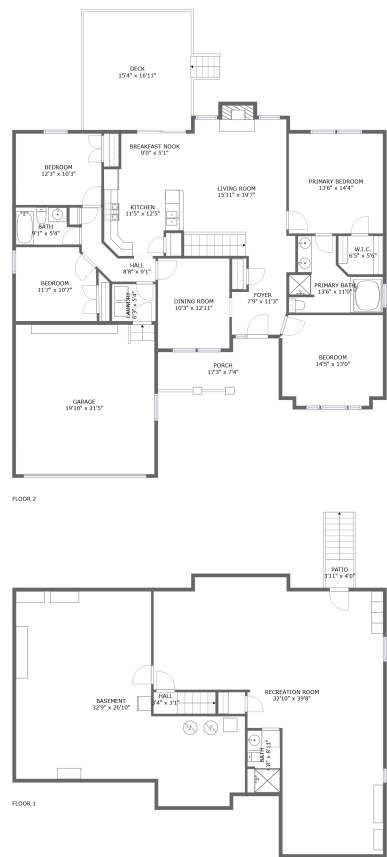




Home report


155 Chickamauga Dr,Harpers Ferry,WV,US




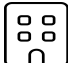
Property summary


 **1** Garages


 **4** Bedrooms

 **3** Bathrooms

 **0** Half baths

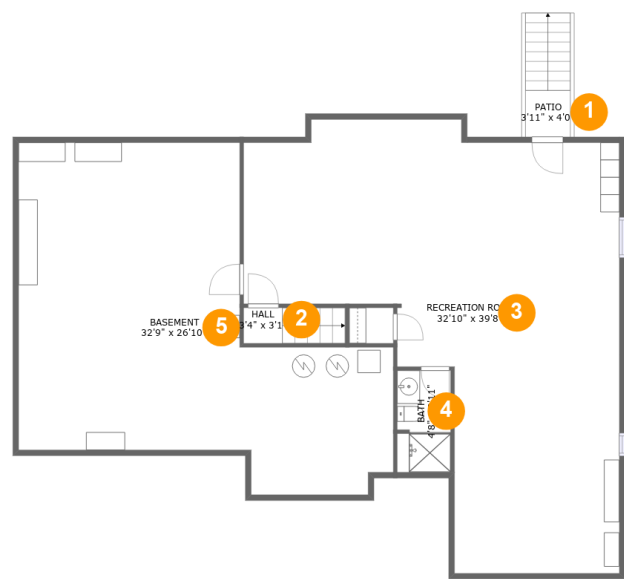
 **2** Floors

 **2,769** Gross living area sqft

 **4,380** Total sqft

Home report

155 Chickamauga Dr,Harpers Ferry,WV,US



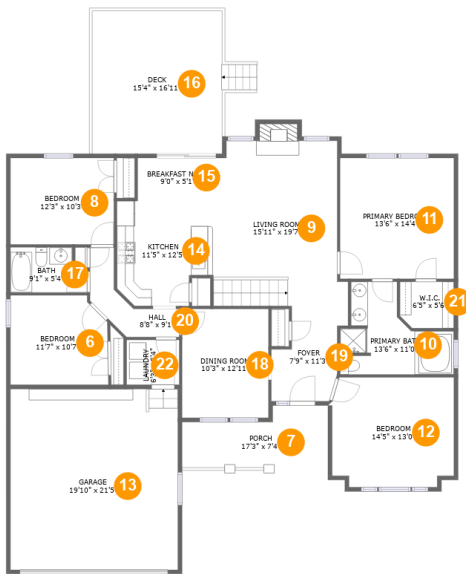
Room dimensions

Floor 1 Total sqft: 1782    Living area: 1014

#		Dimensions	sqft	Counted as living area
1	Patio	3'11" x 4'0"	42 sq. ft	No
2	Hall	3'4" x 3'1"	28 sq. ft	Yes
3	Recreation Room	32'10" x 39'8"	855 sq. ft	Yes
4	Bath	4'8" x 8'11"	41 sq. ft	Yes
5	Basement	32'9" x 26'10"	683 sq. ft	No

Home report

155 Chickamauga Dr,Harpers Ferry,WV,US



Room dimensions

Floor 2

Total sqft: 2598

Living area: 1755

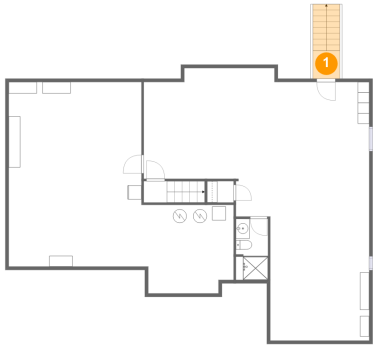
#		Dimensions	sqft	Counted as living area
6	Bedroom	11'7" x 10'7"	117 sq. ft	Yes
7	Porch	17'3" x 7'4"	106 sq. ft	No
8	Bedroom	12'3" x 10'3"	125 sq. ft	Yes
9	Living Room	15'11" x 19'7"	296 sq. ft	Yes
10	Primary Bath	13'6" x 11'0"	101 sq. ft	Yes
11	Primary Bedroom	13'6" x 14'4"	193 sq. ft	Yes
12	Bedroom	14'5" x 13'0"	181 sq. ft	Yes
13	Garage	19'10" x 21'5"	424 sq. ft	No
14	Kitchen	11'5" x 12'5"	130 sq. ft	Yes
15	Breakfast Nook	9'0" x 5'1"	46 sq. ft	Yes
16	Deck	15'4" x 16'11"	272 sq. ft	No

## Home report

# 155 Chickamauga Dr,Harpers Ferry,WV,US

#		Dimensions	sqft	Counted as living area
17	Bath	9'1" x 5'4"	44 sq. ft	Yes
18	Dining Room	10'3" x 12'11"	132 sq. ft	Yes
19	Foyer	7'9" x 11'3"	77 sq. ft	Yes
20	Hall	8'8" x 9'1"	49 sq. ft	Yes
21	W.I.C.	6'5" x 5'6"	34 sq. ft	Yes
22	Laundry	6'3" x 5'4"	33 sq. ft	Yes

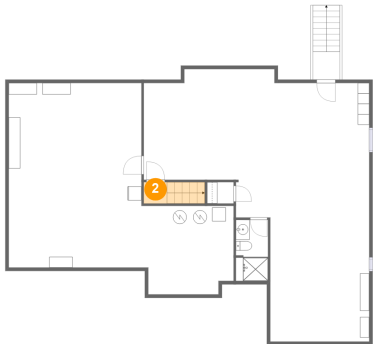
1 Floor 1 - Patio



Dimensions: 3'11" x 4'0"  
Area: 42 sq. ft  
Counted as living area: No

Heated: No  
Finished: Yes  
Enclosed: No  
Contiguous: Yes  
Permitted: Yes  
Wet space: No  
Addition: No  
Conversion: No

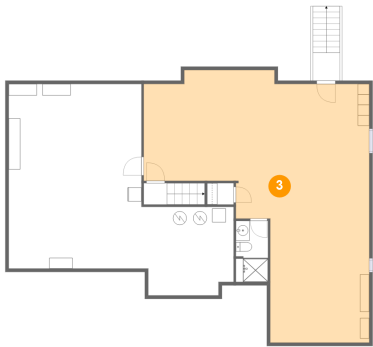
2 Floor 1 - Hall



Dimensions: 3'4" x 3'1"  
Area: 28 sq. ft  
Counted as living area: Yes

Heated: Yes  
Finished: Yes  
Enclosed: Yes  
Contiguous: Yes  
Permitted: Yes  
Wet space: No  
Addition: No  
Conversion: No

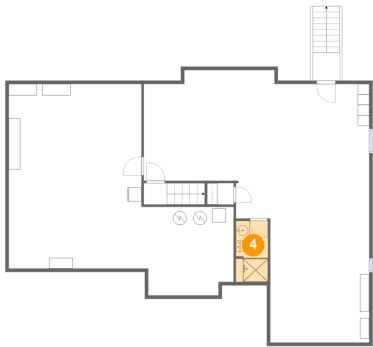
3 Floor 1 - Recreation Room



Dimensions: 32'10" x 39'8"  
Area: 855 sq. ft  
Counted as living area: Yes

Heated: Yes  
Finished: Yes  
Enclosed: Yes  
Contiguous: Yes  
Permitted: Yes  
Wet space: No  
Addition: No  
Conversion: No

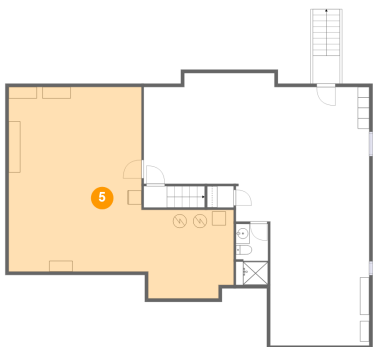
4 Floor 1 - Bath



Dimensions: 4'8" x 8'11"  
Area: 41 sq. ft  
Counted as living area: Yes

Heated: Yes  
Finished: Yes  
Enclosed: Yes  
Contiguous: Yes  
Permitted: Yes  
Wet space: Yes  
Addition: No  
Conversion: No

5 Floor 1 - Basement



Dimensions: 32'9" x 26'10"  
Area: 683 sq. ft  
Counted as living area: No

Heated: Yes  
Finished: No  
Enclosed: Yes  
Contiguous: Yes  
Permitted: Yes  
Wet space: No  
Addition: No  
Conversion: No

## 6 Floor 2 - Bedroom



Dimensions: 11'7" x 10'7"  
Area: 117 sq. ft  
Counted as living area: Yes

Heated: Yes  
Finished: Yes  
Enclosed: Yes  
Contiguous: Yes  
Permitted: Yes  
Wet space: No  
Addition: No  
Conversion: No

## 7 Floor 2 - Porch



Dimensions: 17'3" x 7'4"  
Area: 106 sq. ft  
Counted as living area: No

Heated: No  
Finished: Yes  
Enclosed: No  
Contiguous: Yes  
Permitted: Yes  
Wet space: No  
Addition: No  
Conversion: No

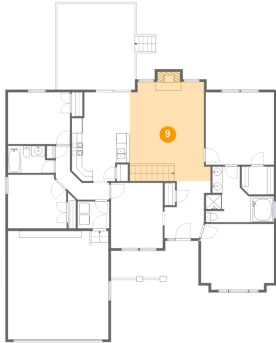
## 8 Floor 2 - Bedroom



Dimensions: 12'3" x 10'3"  
Area: 125 sq. ft  
Counted as living area: Yes

Heated: Yes  
Finished: Yes  
Enclosed: Yes  
Contiguous: Yes  
Permitted: Yes  
Wet space: No  
Addition: No  
Conversion: No

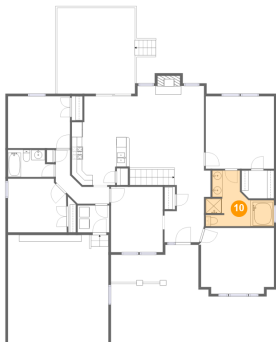
## 9 Floor 2 - Living Room



Dimensions: 15'11" x 19'7"  
Area: 296 sq. ft  
Counted as living area: Yes

Heated: Yes  
Finished: Yes  
Enclosed: Yes  
Contiguous: Yes  
Permitted: Yes  
Wet space: No  
Addition: No  
Conversion: No

## 10 Floor 2 - Primary Bath



Dimensions: 13'6" x 11'0"  
Area: 101 sq. ft  
Counted as living area: Yes

Heated: Yes  
Finished: Yes  
Enclosed: Yes  
Contiguous: Yes  
Permitted: Yes  
Wet space: Yes  
Addition: No  
Conversion: No

## 11 Floor 2 - Primary Bedroom



Dimensions: 13'6" x 14'4"  
Area: 193 sq. ft  
Counted as living area: Yes

Heated: Yes  
Finished: Yes  
Enclosed: Yes  
Contiguous: Yes  
Permitted: Yes  
Wet space: No  
Addition: No  
Conversion: No



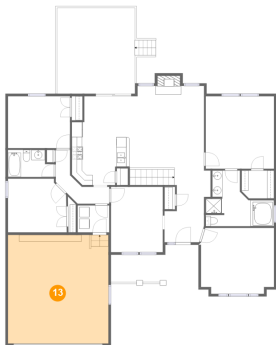
## 12 Floor 2 - Bedroom



Dimensions: 14'5" x 13'0"  
Area: 181 sq. ft  
Counted as living area: Yes

Heated: Yes  
Finished: Yes  
Enclosed: Yes  
Contiguous: Yes  
Permitted: Yes  
Wet space: No  
Addition: No  
Conversion: No

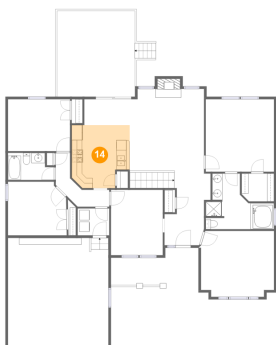
## 13 Floor 2 - Garage



Dimensions: 19'10" x 21'5"  
Area: 424 sq. ft  
Counted as living area: No

Heated: No  
Finished: No  
Enclosed: Yes  
Contiguous: Yes  
Permitted: Yes  
Wet space: No  
Addition: No  
Conversion: No

## 14 Floor 2 - Kitchen



Dimensions: 11'5" x 12'5"  
Area: 130 sq. ft  
Counted as living area: Yes

Heated: Yes  
Finished: Yes  
Enclosed: Yes  
Contiguous: Yes  
Permitted: Yes  
Wet space: No  
Addition: No  
Conversion: No

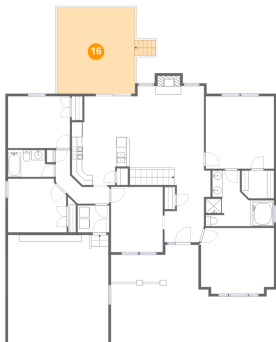
## 15 Floor 2 - Breakfast Nook



Dimensions: 9'0" x 5'1"  
Area: 46 sq. ft  
Counted as living area: Yes

Heated: Yes  
Finished: Yes  
Enclosed: Yes  
Contiguous: Yes  
Permitted: Yes  
Wet space: No  
Addition: No  
Conversion: No

## 16 Floor 2 - Deck



Dimensions: 15'4" x 16'11"  
Area: 272 sq. ft  
Counted as living area: No

Heated: No  
Finished: Yes  
Enclosed: No  
Contiguous: Yes  
Permitted: Yes  
Wet space: No  
Addition: No  
Conversion: No

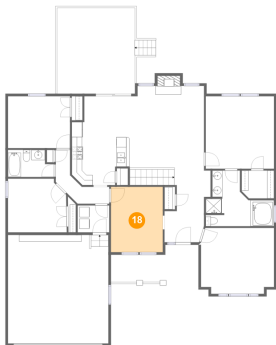
## 17 Floor 2 - Bath



Dimensions: 9'1" x 5'4"  
Area: 44 sq. ft  
Counted as living area: Yes

Heated: Yes  
Finished: Yes  
Enclosed: Yes  
Contiguous: Yes  
Permitted: Yes  
Wet space: Yes  
Addition: No  
Conversion: No

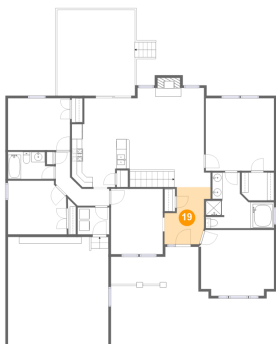
18 Floor 2 - Dining Room



Dimensions: 10'3" x 12'11"  
Area: 132 sq. ft  
Counted as living area: Yes

Heated: Yes  
Finished: Yes  
Enclosed: Yes  
Contiguous: Yes  
Permitted: Yes  
Wet space: No  
Addition: No  
Conversion: No

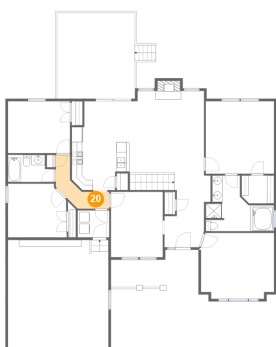
19 Floor 2 - Foyer



Dimensions: 7'9" x 11'3"  
Area: 77 sq. ft  
Counted as living area: Yes

Heated: Yes  
Finished: Yes  
Enclosed: Yes  
Contiguous: Yes  
Permitted: Yes  
Wet space: No  
Addition: No  
Conversion: No

20 Floor 2 - Hall

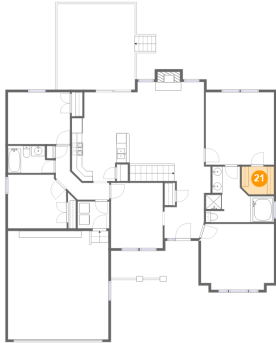


Dimensions: 8'8" x 9'1"  
Area: 49 sq. ft  
Counted as living area: Yes

Heated: Yes  
Finished: Yes  
Enclosed: Yes  
Contiguous: Yes  
Permitted: Yes  
Wet space: No  
Addition: No  
Conversion: No

## 21 Floor 2 - W.I.C.

---

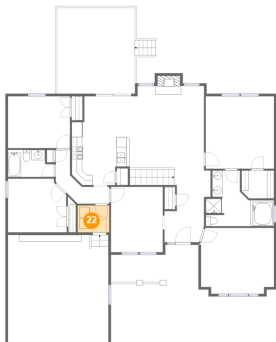


Dimensions: 6'5" x 5'6"  
Area: 34 sq. ft  
Counted as living area: Yes

Heated: Yes  
Finished: Yes  
Enclosed: Yes  
Contiguous: Yes  
Permitted: Yes  
Wet space: No  
Addition: No  
Conversion: No

## 22 Floor 2 - Laundry

---



Dimensions: 6'3" x 5'4"  
Area: 33 sq. ft  
Counted as living area: Yes

Heated: Yes  
Finished: Yes  
Enclosed: Yes  
Contiguous: Yes  
Permitted: Yes  
Wet space: No  
Addition: No  
Conversion: No