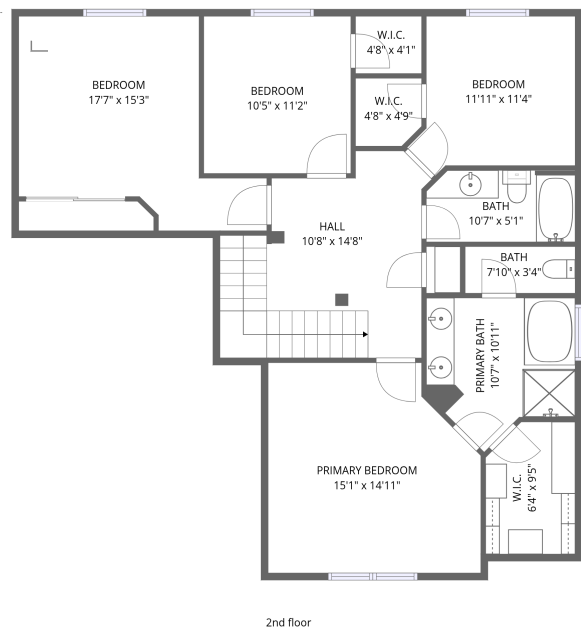
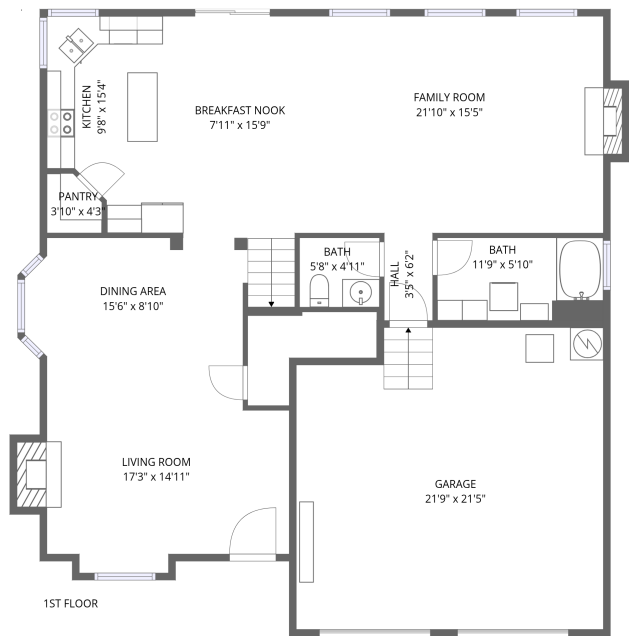


Home data report

1824 23rd St,Snohomish,WA,US



Total Area: 2327 sq. ft
1st Floor: 1176 sq. ft, 2nd Floor: 1151 sq. ft
Excluded: Garage 450 sq. ft, Fireplace 20 sq. ft, Walls: 179 sq. ft

Property summary

 **2** Floors

 **4** Bedrooms

 **2** Bathrooms

Home data report

1824 23rd St, Snohomish, WA, US



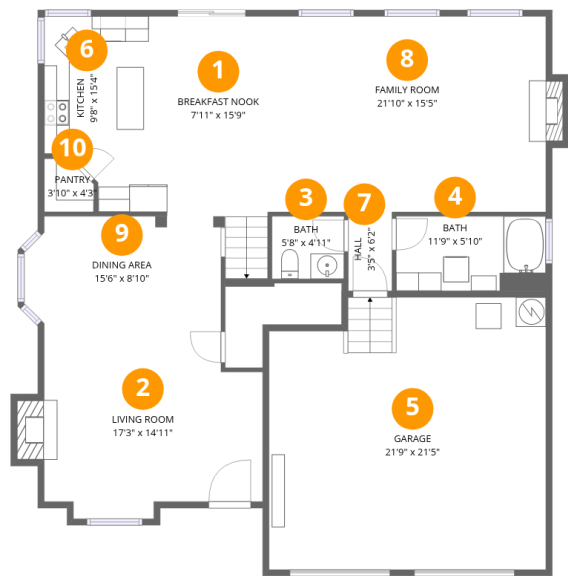
2
Half baths



1
Garages

Home data report

1824 23rd St,Snohomish,WA,US



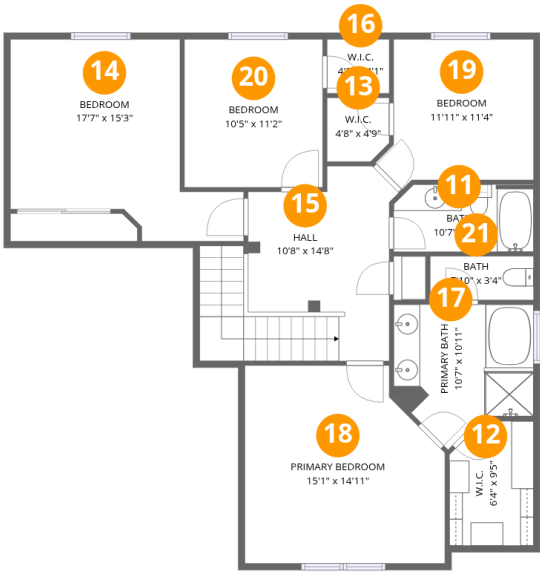
Room dimensions

Floor 1 Total:1176sqft Excluded: 470sqft

#		Dimensions	sqft	Counted as living area
1	Breakfast Nook	7'11" x 15'9"	125 sq. ft	Yes
2	Living Room	17'3" x 14'11"	241 sq. ft	Yes
3	Bath	5'8" x 4'11"	28 sq. ft	Yes
4	Bath	11'9" x 5'10"	69 sq. ft	Yes
5	Garage	21'9" x 21'5"	450 sq. ft	No
6	Kitchen	9'8" x 15'4"	132 sq. ft	Yes
7	Hall	3'5" x 6'2"	21 sq. ft	Yes
8	Family Room	21'10" x 15'5"	343 sq. ft	Yes
9	Dining Area	15'6" x 8'10"	149 sq. ft	Yes
10	Pantry	3'10" x 4'3"	14 sq. ft	Yes

Home data report

1824 23rd St,Snohomish,WA,US



Room dimensions

Floor 2 Total:1151sqft Excluded: 0sqft

#		Dimensions	sqft	Counted as living area
11	Bath	10'7" x 5'1"	53 sq. ft	Yes
12	W.I.C.	6'4" x 9'5"	56 sq. ft	Yes
13	W.I.C.	4'8" x 4'9"	22 sq. ft	Yes
14	Bedroom	17'7" x 15'3"	189 sq. ft	Yes
15	Hall	10'8" x 14'8"	176 sq. ft	Yes
16	W.I.C.	4'8" x 4'1"	19 sq. ft	Yes
17	Primary Bath	10'7" x 10'11"	94 sq. ft	Yes
18	Primary Bedroom	15'1" x 14'11"	206 sq. ft	Yes
19	Bedroom	11'11" x 11'4"	114 sq. ft	Yes
20	Bedroom	10'5" x 11'2"	116 sq. ft	Yes
21	Bath	7'10" x 3'4"	26 sq. ft	Yes

1 Floor 1 - Breakfast Nook



Dimensions: 7'11" x 15'9"
Area: 125 sq. ft
Counted as living area: Yes

Heated: Yes
Finished: Yes
Enclosed: Yes
Contiguous: Yes
Permitted: Yes
Wet space: No
Addition: No
Conversion: No

2 Floor 1 - Living Room



Dimensions: 17'3" x 14'11"
Area: 241 sq. ft
Counted as living area: Yes

Heated: Yes
Finished: Yes
Enclosed: Yes
Contiguous: Yes
Permitted: Yes
Wet space: No
Addition: No
Conversion: No

3 Floor 1 - Bath



Dimensions: 5'8" x 4'11"
Area: 28 sq. ft
Counted as living area: Yes

Heated: Yes
Finished: Yes
Enclosed: Yes
Contiguous: Yes
Permitted: Yes
Wet space: Yes
Addition: No
Conversion: No

4 Floor 1 - Bath



Dimensions: 11'9" x 5'10"
Area: 69 sq. ft
Counted as living area: Yes

Heated: Yes
Finished: Yes
Enclosed: Yes
Contiguous: Yes
Permitted: Yes
Wet space: Yes
Addition: No
Conversion: No

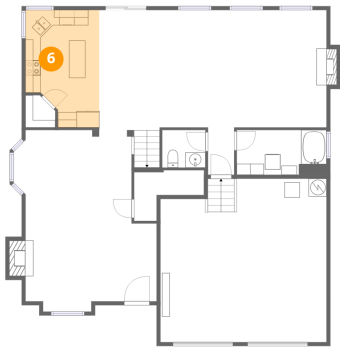
5 Floor 1 - Garage



Dimensions: 21'9" x 21'5"
Area: 450 sq. ft
Counted as living area: No

Heated: No
Finished: No
Enclosed: Yes
Contiguous: Yes
Permitted: Yes
Wet space: No
Addition: No
Conversion: No

6 Floor 1 - Kitchen



Dimensions: 9'8" x 15'4"
Area: 132 sq. ft
Counted as living area: Yes

Heated: Yes
Finished: Yes
Enclosed: Yes
Contiguous: Yes
Permitted: Yes
Wet space: No
Addition: No
Conversion: No

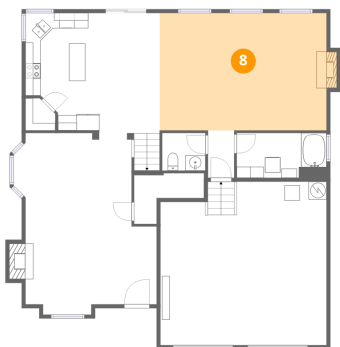
7 Floor 1 - Hall



Dimensions: 3'5" x 6'2"
Area: 21 sq. ft
Counted as living area: Yes

Heated: Yes
Finished: Yes
Enclosed: Yes
Contiguous: Yes
Permitted: Yes
Wet space: No
Addition: No
Conversion: No

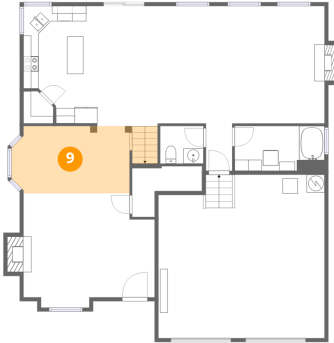
8 Floor 1 - Family Room



Dimensions: 21'10" x 15'5"
Area: 343 sq. ft
Counted as living area: Yes

Heated: Yes
Finished: Yes
Enclosed: Yes
Contiguous: Yes
Permitted: Yes
Wet space: No
Addition: No
Conversion: No

9 Floor 1 - Dining Area



Dimensions: 15'6" x 8'10"
Area: 149 sq. ft
Counted as living area: Yes

Heated: Yes
Finished: Yes
Enclosed: Yes
Contiguous: Yes
Permitted: Yes
Wet space: No
Addition: No
Conversion: No

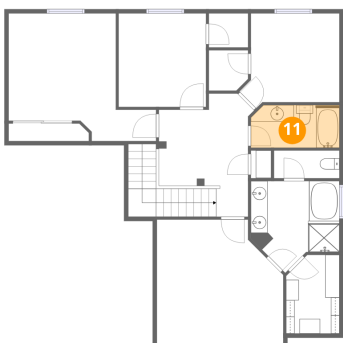
10 Floor 1 - Pantry



Dimensions: 3'10" x 4'3"
Area: 14 sq. ft
Counted as living area: Yes

Heated: Yes
Finished: Yes
Enclosed: Yes
Contiguous: Yes
Permitted: Yes
Wet space: No
Addition: No
Conversion: No

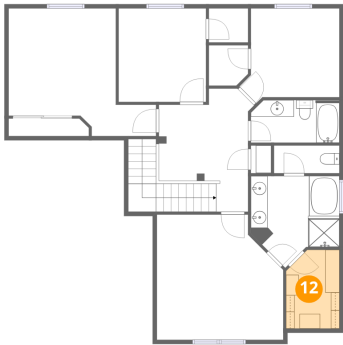
11 Floor 2 - Bath



Dimensions: 10'7" x 5'1"
Area: 53 sq. ft
Counted as living area: Yes

Heated: Yes
Finished: Yes
Enclosed: Yes
Contiguous: Yes
Permitted: Yes
Wet space: Yes
Addition: No
Conversion: No

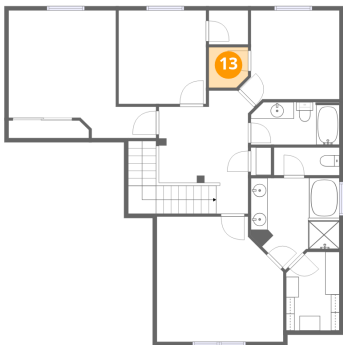
12 Floor 2 - W.I.C.



Dimensions: 6'4" x 9'5"
Area: 56 sq. ft
Counted as living area: Yes

Heated: Yes
Finished: Yes
Enclosed: Yes
Contiguous: Yes
Permitted: Yes
Wet space: No
Addition: No
Conversion: No

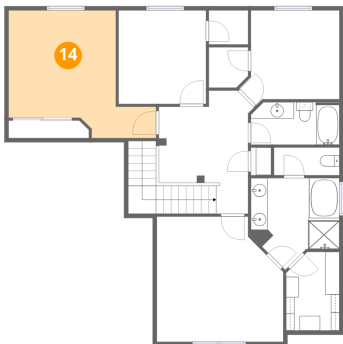
13 Floor 2 - W.I.C.



Dimensions: 4'8" x 4'9"
Area: 22 sq. ft
Counted as living area: Yes

Heated: Yes
Finished: Yes
Enclosed: Yes
Contiguous: Yes
Permitted: Yes
Wet space: No
Addition: No
Conversion: No

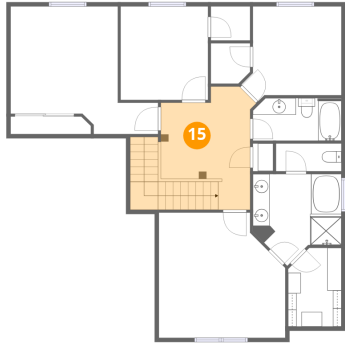
14 Floor 2 - Bedroom



Dimensions: 17'7" x 15'3"
Area: 189 sq. ft
Counted as living area: Yes

Heated: Yes
Finished: Yes
Enclosed: Yes
Contiguous: Yes
Permitted: Yes
Wet space: No
Addition: No
Conversion: No

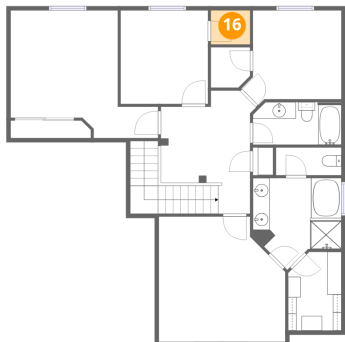
15 Floor 2 - Hall



Dimensions: 10'8" x 14'8"
Area: 176 sq. ft
Counted as living area: Yes

Heated: Yes
Finished: Yes
Enclosed: Yes
Contiguous: Yes
Permitted: Yes
Wet space: No
Addition: No
Conversion: No

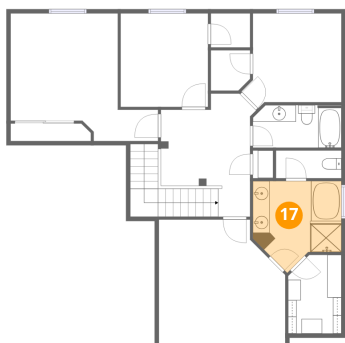
16 Floor 2 - W.I.C.



Dimensions: 4'8" x 4'1"
Area: 19 sq. ft
Counted as living area: Yes

Heated: Yes
Finished: Yes
Enclosed: Yes
Contiguous: Yes
Permitted: Yes
Wet space: No
Addition: No
Conversion: No

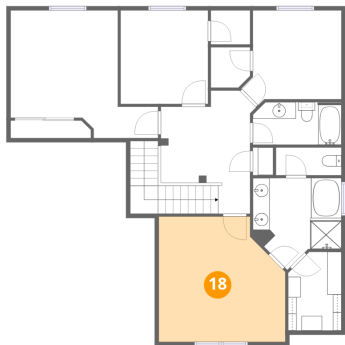
17 Floor 2 - Primary Bath



Dimensions: 10'7" x 10'11"
Area: 94 sq. ft
Counted as living area: Yes

Heated: Yes
Finished: Yes
Enclosed: Yes
Contiguous: Yes
Permitted: Yes
Wet space: Yes
Addition: No
Conversion: No

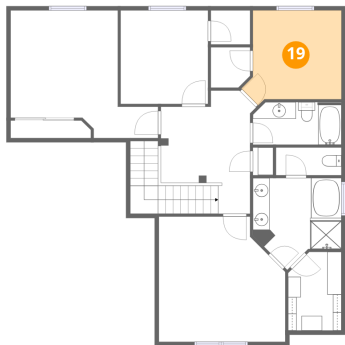
18 Floor 2 - Primary Bedroom



Dimensions: 15'1" x 14'11"
Area: 206 sq. ft
Counted as living area: Yes

Heated: Yes
Finished: Yes
Enclosed: Yes
Contiguous: Yes
Permitted: Yes
Wet space: No
Addition: No
Conversion: No

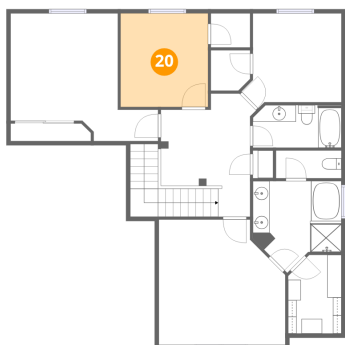
19 Floor 2 - Bedroom



Dimensions: 11'11" x 11'4"
Area: 114 sq. ft
Counted as living area: Yes

Heated: Yes
Finished: Yes
Enclosed: Yes
Contiguous: Yes
Permitted: Yes
Wet space: No
Addition: No
Conversion: No

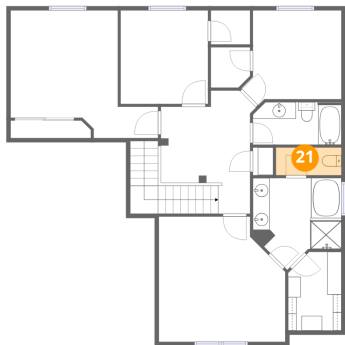
20 Floor 2 - Bedroom



Dimensions: 10'5" x 11'2"
Area: 116 sq. ft
Counted as living area: Yes

Heated: Yes
Finished: Yes
Enclosed: Yes
Contiguous: Yes
Permitted: Yes
Wet space: No
Addition: No
Conversion: No

21 Floor 2 - Bath



Dimensions: 7'10" x 3'4"
Area: 26 sq. ft
Counted as living area: Yes

Heated: Yes
Finished: Yes
Enclosed: Yes
Contiguous: Yes
Permitted: Yes
Wet space: Yes
Addition: No
Conversion: No