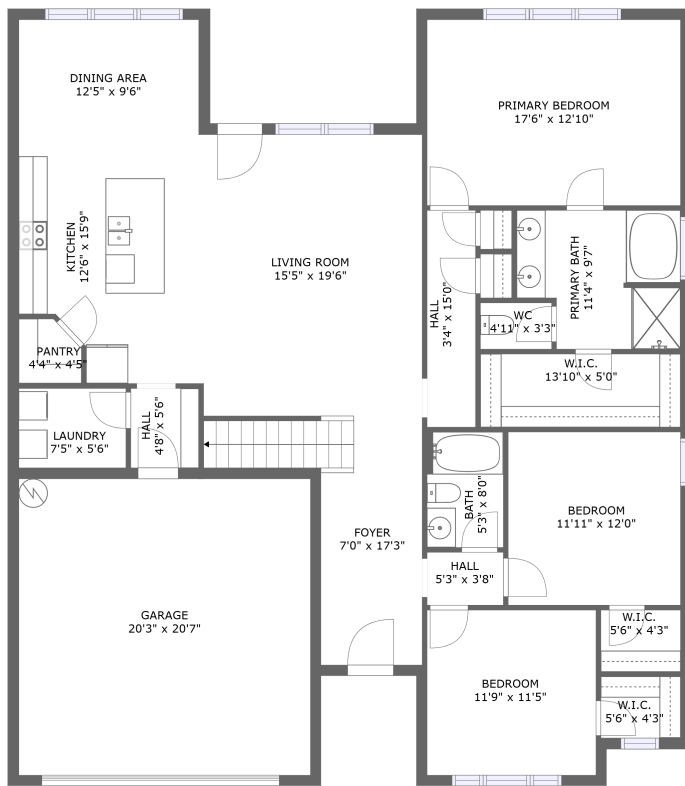
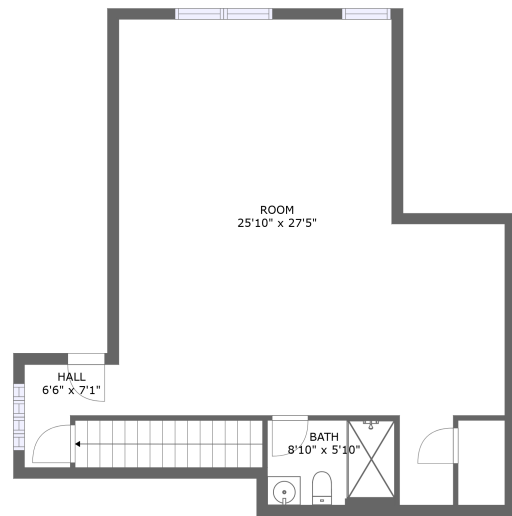


## Home report

2113 South Meadows Drive Southwest, Huntsville,  
Madison County, Alabama, United States, 35803



FLOOR 1



FLOOR 2

**Total GLA: 2799 sq. ft**

Floor 1: 1919 sq. ft, Floor 2: 880 sq. ft

Excluded: Garage 452 sq. ft, Low ceiling 33 sq. ft

## Property summary



**2**  
Floors



**3**  
Bedrooms



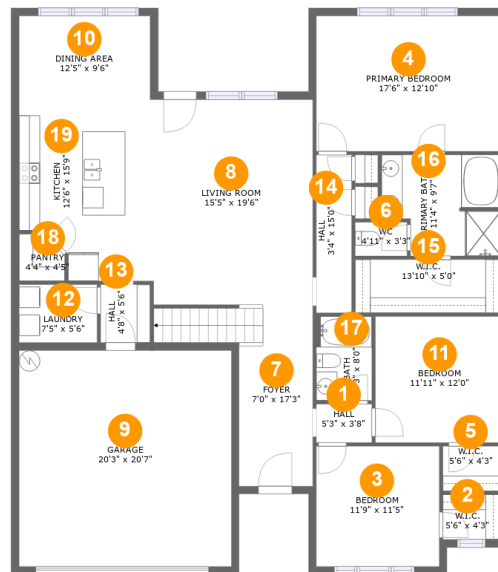
**3**  
Bathrooms



**1**  
Garages

Scan captured on Mon, 11 Aug 2025 19:42:13 GMT

FLOOR PLAN CREATED BY CUBICASA APP. MEASUREMENTS DEEMED HIGHLY RELIABLE BUT NOT GUARANTEED.



## Room dimensions

Floor 1

Total:1919sqft

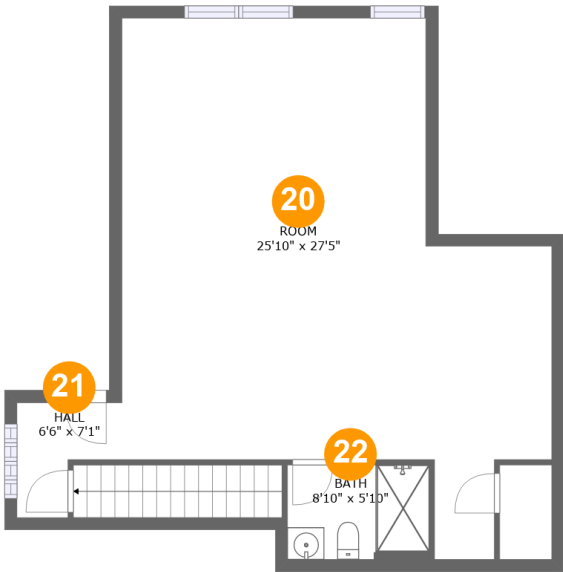
Excluded: 452sqft

| #  |                 | Max Dimensions | sqft       | Included |
|----|-----------------|----------------|------------|----------|
| 1  | Hall            | 5'3" x 3'8"    | 19 sq. ft  | Yes      |
| 2  | W.I.C.          | 5'6" x 4'3"    | 24 sq. ft  | Yes      |
| 3  | Bedroom         | 11'9" x 11'5"  | 134 sq. ft | Yes      |
| 4  | Primary Bedroom | 17'6" x 12'10" | 226 sq. ft | Yes      |
| 5  | W.I.C.          | 5'6" x 4'3"    | 24 sq. ft  | Yes      |
| 6  | WC              | 4'11" x 3'3"   | 16 sq. ft  | Yes      |
| 7  | Foyer           | 7'0" x 17'3"   | 148 sq. ft | Yes      |
| 8  | Living Room     | 15'5" x 19'6"  | 301 sq. ft | Yes      |
| 9  | Garage          | 20'3" x 20'7"  | 415 sq. ft | No       |
| 10 | Dining Area     | 12'5" x 9'6"   | 118 sq. ft | Yes      |
| 11 | Bedroom         | 11'11" x 12'0" | 143 sq. ft | Yes      |

**2113 South Meadows Drive Southwest, Huntsville,  
Madison County, Alabama, United States, 35803**

| #  |              | Max Dimensions | sqft       | Included |
|----|--------------|----------------|------------|----------|
| 12 | Laundry      | 7'5" x 5'6"    | 41 sq. ft  | Yes      |
| 13 | Hall         | 4'8" x 5'6"    | 26 sq. ft  | Yes      |
| 14 | Hall         | 3'4" x 15'0"   | 51 sq. ft  | Yes      |
| 15 | W.I.C.       | 13'10" x 5'0"  | 70 sq. ft  | Yes      |
| 16 | Primary Bath | 11'4" x 9'7"   | 98 sq. ft  | Yes      |
| 17 | Bath         | 5'3" x 8'0"    | 42 sq. ft  | Yes      |
| 18 | Pantry       | 4'4" x 4'5"    | 17 sq. ft  | Yes      |
| 19 | Kitchen      | 12'6" x 15'9"  | 176 sq. ft | Yes      |

2113 South Meadows Drive Southwest, Huntsville,  
Madison County, Alabama, United States, 35803



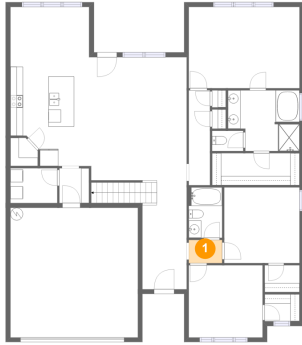
Room dimensions

Floor 2 Total:880sqft   Excluded: 33sqft

| #  |      | Max Dimensions | sqft       | Included |
|----|------|----------------|------------|----------|
| 20 | Room | 25'10" x 27'5" | 635 sq. ft | Yes      |
| 21 | Hall | 6'6" x 7'1"    | 35 sq. ft  | Yes      |
| 22 | Bath | 8'10" x 5'10"  | 52 sq. ft  | Yes      |



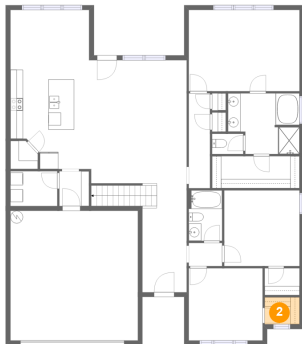
## 1 Floor 1 - Hall



Max Dimensions: 5'3" x 3'8"  
Calculated Area: 19 sq. ft  
Included: Yes

Heated: Yes  
Finished: Yes  
Enclosed: Yes  
Contiguous: Yes  
Permitted: Yes  
Wet space: No  
Addition: No  
Conversion: No

## 2 Floor 1 - W.I.C.



Max Dimensions: 5'6" x 4'3"  
Calculated Area: 24 sq. ft  
Included: Yes

Heated: Yes  
Finished: Yes  
Enclosed: Yes  
Contiguous: Yes  
Permitted: Yes  
Wet space: No  
Addition: No  
Conversion: No



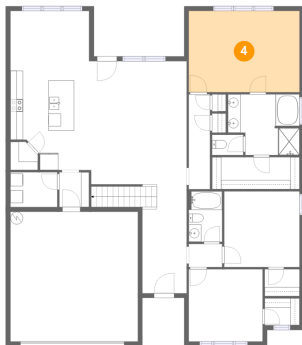
### 3 Floor 1 - Bedroom



Max Dimensions: 11'9" x 11'5"  
Calculated Area: 134 sq. ft  
Included: Yes

Heated: Yes  
Finished: Yes  
Enclosed: Yes  
Contiguous: Yes  
Permitted: Yes  
Wet space: No  
Addition: No  
Conversion: No

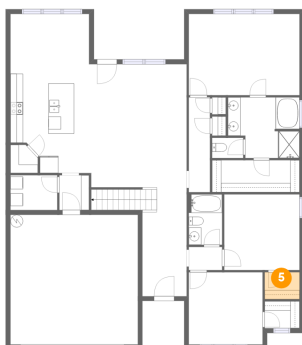
### 4 Floor 1 - Primary Bedroom



Max Dimensions: 17'6" x 12'10"  
Calculated Area: 226 sq. ft  
Included: Yes

Heated: Yes  
Finished: Yes  
Enclosed: Yes  
Contiguous: Yes  
Permitted: Yes  
Wet space: No  
Addition: No  
Conversion: No

### 5 Floor 1 - W.I.C.

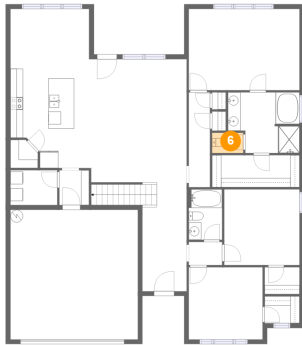


Max Dimensions: 5'6" x 4'3"  
Calculated Area: 24 sq. ft  
Included: Yes

Heated: Yes  
Finished: Yes  
Enclosed: Yes  
Contiguous: Yes  
Permitted: Yes  
Wet space: No  
Addition: No  
Conversion: No



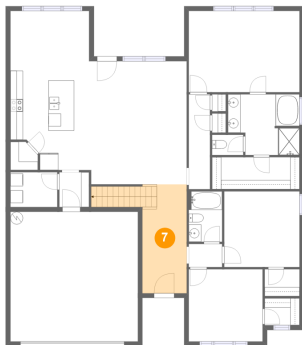
## 6 Floor 1 - WC



Max Dimensions: 4'11" x 3'3"  
Calculated Area: 16 sq. ft  
Included: Yes

Heated: Yes  
Finished: Yes  
Enclosed: Yes  
Contiguous: Yes  
Permitted: Yes  
Wet space: Yes  
Addition: No  
Conversion: No

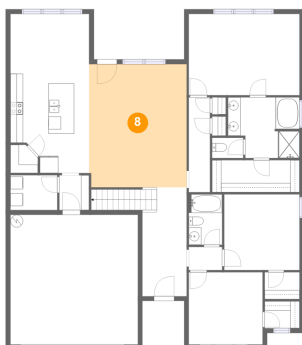
## 7 Floor 1 - Foyer



Max Dimensions: 7'0" x 17'3"  
Calculated Area: 148 sq. ft  
Included: Yes

Heated: Yes  
Finished: Yes  
Enclosed: Yes  
Contiguous: Yes  
Permitted: Yes  
Wet space: No  
Addition: No  
Conversion: No

## 8 Floor 1 - Living Room

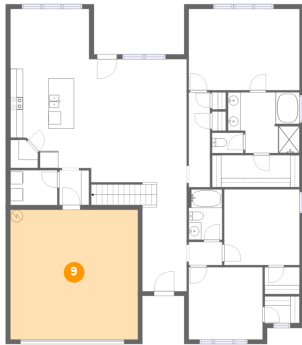


Max Dimensions: 15'5" x 19'6"  
Calculated Area: 301 sq. ft  
Included: Yes

Heated: Yes  
Finished: Yes  
Enclosed: Yes  
Contiguous: Yes  
Permitted: Yes  
Wet space: No  
Addition: No  
Conversion: No



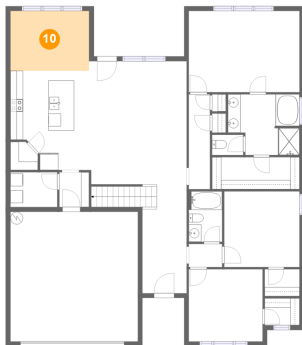
## 9 Floor 1 - Garage



Max Dimensions: 20'3" x 20'7"  
Calculated Area: 415 sq. ft  
Included: No

Heated: No  
Finished: Yes  
Enclosed: Yes  
Contiguous: Yes  
Permitted: Yes  
Wet space: No  
Addition: No  
Conversion: No

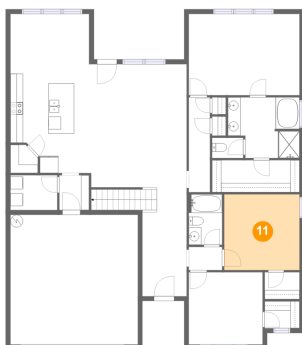
## 10 Floor 1 - Dining Area



Max Dimensions: 12'5" x 9'6"  
Calculated Area: 118 sq. ft  
Included: Yes

Heated: Yes  
Finished: Yes  
Enclosed: Yes  
Contiguous: Yes  
Permitted: Yes  
Wet space: No  
Addition: No  
Conversion: No

## 11 Floor 1 - Bedroom



Max Dimensions: 11'11" x 12'0"  
Calculated Area: 143 sq. ft  
Included: Yes

Heated: Yes  
Finished: Yes  
Enclosed: Yes  
Contiguous: Yes  
Permitted: Yes  
Wet space: No  
Addition: No  
Conversion: No





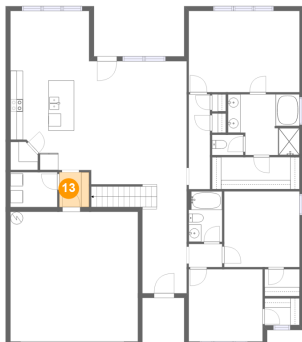
## 12 Floor 1 - Laundry



Max Dimensions: 7'5" x 5'6"  
Calculated Area: 41 sq. ft  
Included: Yes

Heated: Yes  
Finished: Yes  
Enclosed: Yes  
Contiguous: Yes  
Permitted: Yes  
Wet space: No  
Addition: No  
Conversion: No

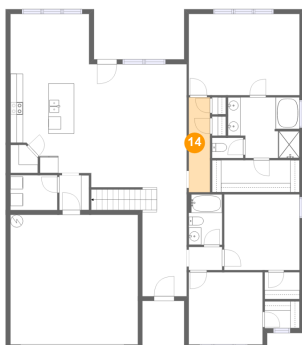
## 13 Floor 1 - Hall



Max Dimensions: 4'8" x 5'6"  
Calculated Area: 26 sq. ft  
Included: Yes

Heated: Yes  
Finished: Yes  
Enclosed: Yes  
Contiguous: Yes  
Permitted: Yes  
Wet space: No  
Addition: No  
Conversion: No

## 14 Floor 1 - Hall

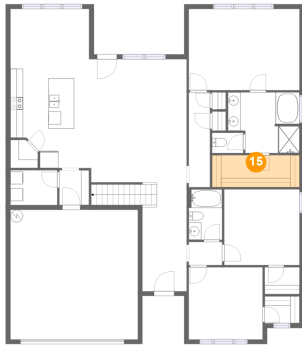


Max Dimensions: 3'4" x  
15'0"  
Calculated Area: 51 sq. ft  
Included: Yes

Heated: Yes  
Finished: Yes  
Enclosed: Yes  
Contiguous:  
Yes  
Permitted: Yes  
Wet space: No  
Addition: No  
Conversion: No



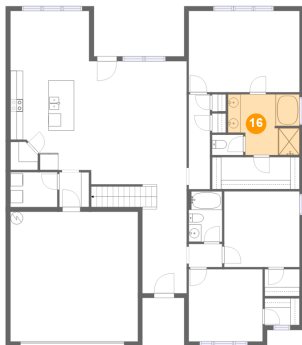
### 15 Floor 1 - W.I.C.



Max Dimensions: 13'10" x 5'0"  
Calculated Area: 70 sq. ft  
Included: Yes

Heated: Yes  
Finished: Yes  
Enclosed: Yes  
Contiguous: Yes  
Permitted: Yes  
Wet space: No  
Addition: No  
Conversion: No

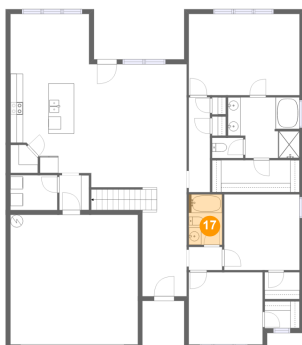
### 16 Floor 1 - Primary Bath



Max Dimensions: 11'4" x 9'7"  
Calculated Area: 98 sq. ft  
Included: Yes

Heated: Yes  
Finished: Yes  
Enclosed: Yes  
Contiguous: Yes  
Permitted: Yes  
Wet space: Yes  
Addition: No  
Conversion: No

### 17 Floor 1 - Bath



Max Dimensions: 5'3" x 8'0"  
Calculated Area: 42 sq. ft  
Included: Yes

Heated: Yes  
Finished: Yes  
Enclosed: Yes  
Contiguous: Yes  
Permitted: Yes  
Wet space: Yes  
Addition: No  
Conversion: No



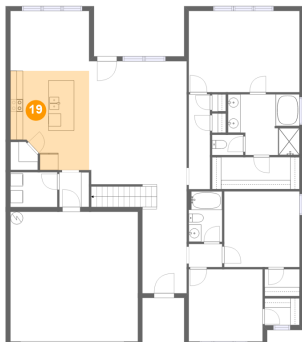
## 18 Floor 1 - Pantry



Max Dimensions: 4'4" x 4'5"  
Calculated Area: 17 sq. ft  
Included: Yes

Heated: Yes  
Finished: Yes  
Enclosed: Yes  
Contiguous: Yes  
Permitted: Yes  
Wet space: No  
Addition: No  
Conversion: No

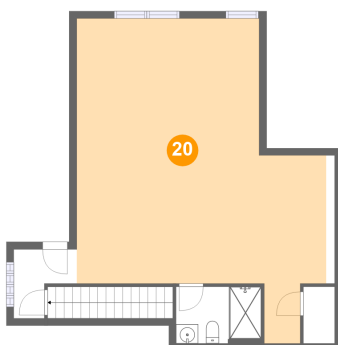
## 19 Floor 1 - Kitchen



Max Dimensions: 12'6" x 15'9"  
Calculated Area: 176 sq. ft  
Included: Yes

Heated: Yes  
Finished: Yes  
Enclosed: Yes  
Contiguous: Yes  
Permitted: Yes  
Wet space: No  
Addition: No  
Conversion: No

## 20 Floor 2 - Room

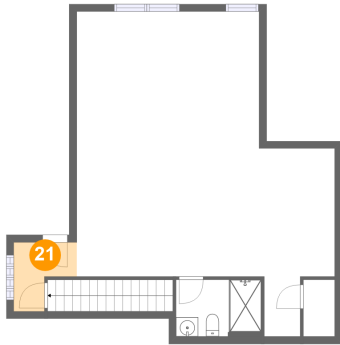


Max Dimensions: 25'10" x 27'5"  
Calculated Area: 635 sq. ft  
Included: Yes

Heated: Yes  
Finished: Yes  
Enclosed: Yes  
Contiguous: Yes  
Permitted: Yes  
Wet space: No  
Addition: No  
Conversion: No



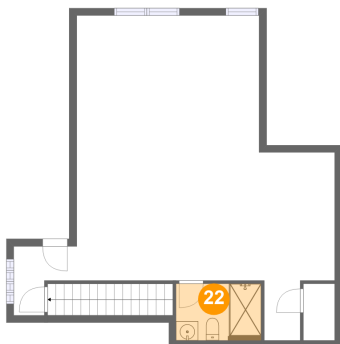
## 21 Floor 2 - Hall



Max Dimensions: 6'6" x 7'1"  
Calculated Area: 35 sq. ft  
Included: Yes

Heated: Yes  
Finished: Yes  
Enclosed: Yes  
Contiguous: Yes  
Permitted: Yes  
Wet space: No  
Addition: No  
Conversion: No

## 22 Floor 2 - Bath



Max Dimensions: 8'10" x  
5'10"  
Calculated Area: 52 sq. ft  
Included: Yes

Heated: Yes  
Finished: Yes  
Enclosed: Yes  
Contiguous:  
Yes  
Permitted: Yes  
Wet space: Yes  
Addition: No  
Conversion: No