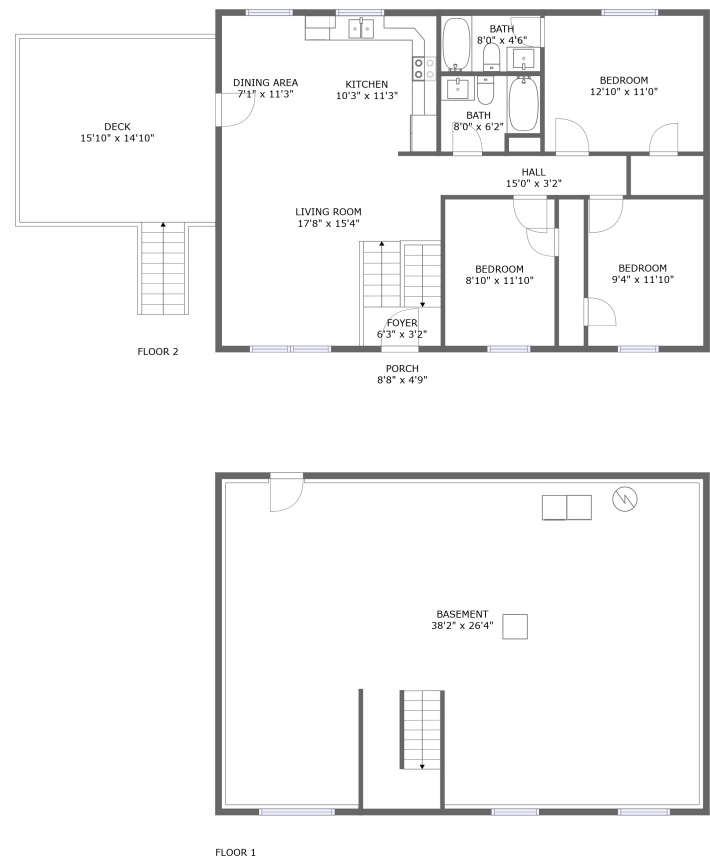
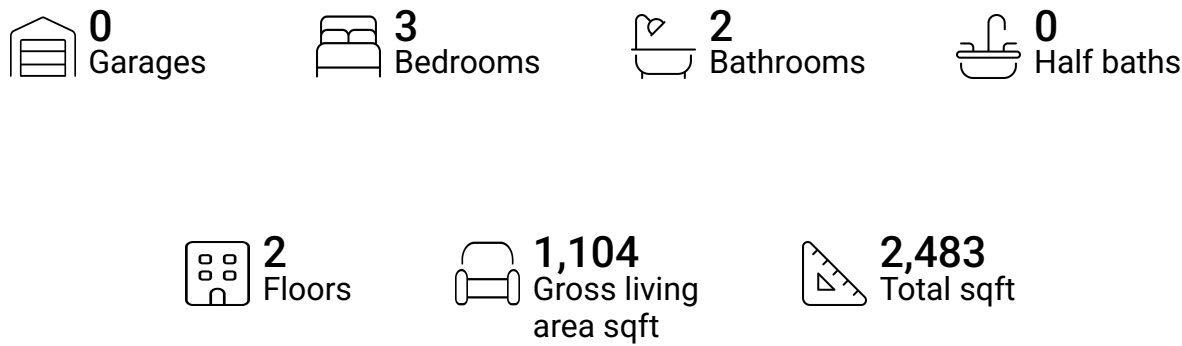


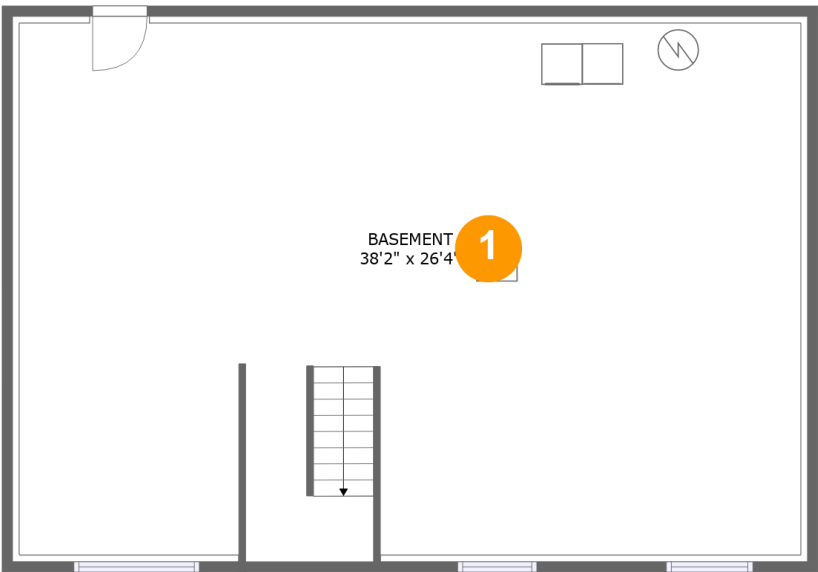
116 Fawn Trail, Winchester, VA, US



Property summary



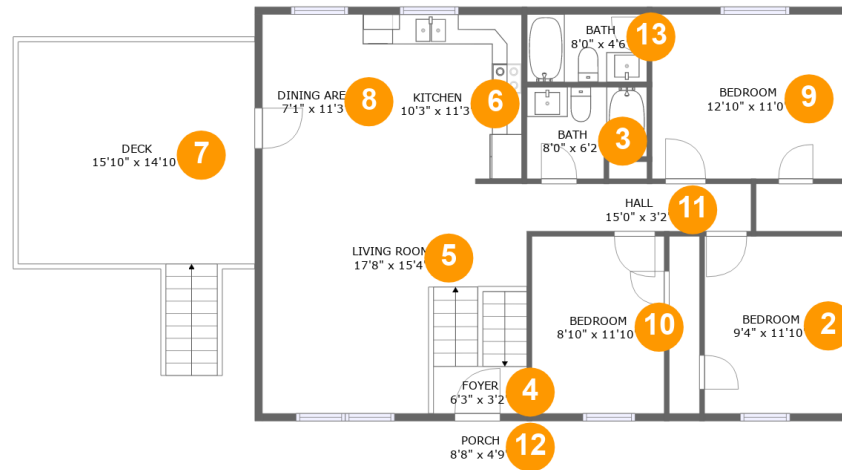
116 Fawn Trail, Winchester, VA, US



Room dimensions

Floor 1 Total sqft: 1103 Living area: 0

#		Dimensions	sqft	Counted as living area
1	Basement	38'2" x 26'4"	1034 sq. ft	No

116 Fawn Trail, Winchester, VA, US**Room dimensions**

Floor 2

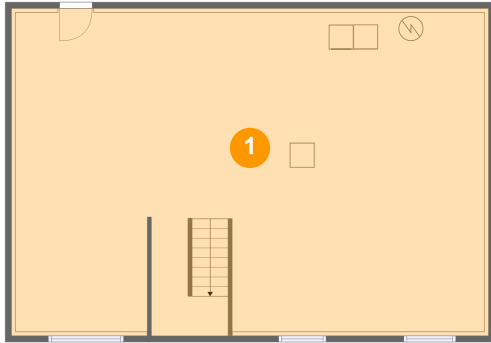
Total sqft: 1380 Living area: 1104

#		Dimensions	sqft	Counted as living area
2	Bedroom	9'4" x 11'10"	110 sq. ft	Yes
3	Bath	8'0" x 6'2"	45 sq. ft	Yes
4	Foyer	6'3" x 3'2"	50 sq. ft	Yes
5	Living Room	17'8" x 15'4"	222 sq. ft	Yes
6	Kitchen	10'3" x 11'3"	115 sq. ft	Yes
7	Deck	15'10" x 14'10"	235 sq. ft	No
8	Dining Area	7'1" x 11'3"	80 sq. ft	Yes
9	Bedroom	12'10" x 11'0"	141 sq. ft	Yes
10	Bedroom	8'10" x 11'10"	105 sq. ft	Yes
11	Hall	15'0" x 3'2"	48 sq. ft	Yes
12	Porch	8'8" x 4'9"	41 sq. ft	No

116 Fawn Trail,Winchester,VA,US

#		Dimensions	sqft	Counted as living area
13	Bath	8'0" x 4'6"	36 sq. ft	Yes

1 Floor 1 - Basement



Dimensions: 38'2" x 26'4"
Area: 1034 sq. ft
Counted as living area: No

Heated: Yes
Finished: No
Enclosed: Yes
Contiguous: Yes
Permitted: Yes
Wet space: No
Addition: No
Conversion: No

2 Floor 2 - Bedroom



Dimensions: 9'4" x 11'10"
Area: 110 sq. ft
Counted as living area: Yes

Heated: Yes
Finished: Yes
Enclosed: Yes
Contiguous: Yes
Permitted: Yes
Wet space: No
Addition: No
Conversion: No

116 Fawn Trail, Winchester, VA, US**3 Floor 2 - Bath**

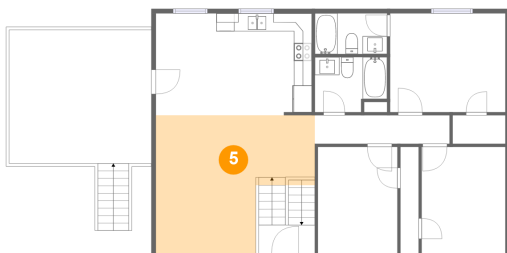
Dimensions: 8'0" x 6'2"
Area: 45 sq. ft
Counted as living area: Yes

Heated: Yes
Finished: Yes
Enclosed: Yes
Contiguous: Yes
Permitted: Yes
Wet space: Yes
Addition: No
Conversion: No

4 Floor 2 - Foyer

Dimensions: 6'3" x 3'2"
Area: 50 sq. ft
Counted as living area: Yes

Heated: Yes
Finished: Yes
Enclosed: Yes
Contiguous: Yes
Permitted: Yes
Wet space: No
Addition: No
Conversion: No

5 Floor 2 - Living Room

Dimensions: 17'8" x 15'4"
Area: 222 sq. ft
Counted as living area: Yes

Heated: Yes
Finished: Yes
Enclosed: Yes
Contiguous: Yes
Permitted: Yes
Wet space: No
Addition: No
Conversion: No

116 Fawn Trail, Winchester, VA, US**6 Floor 2 - Kitchen**

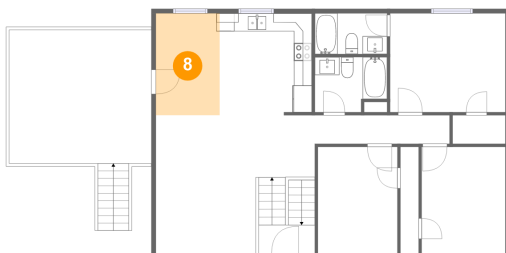
Dimensions: 10'3" x 11'3"
Area: 115 sq. ft
Counted as living area: Yes

Heated: Yes
Finished: Yes
Enclosed: Yes
Contiguous: Yes
Permitted: Yes
Wet space: No
Addition: No
Conversion: No

7 Floor 2 - Deck

Dimensions: 15'10" x 14'10"
Area: 235 sq. ft
Counted as living area: No

Heated: No
Finished: Yes
Enclosed: No
Contiguous: Yes
Permitted: Yes
Wet space: No
Addition: No
Conversion: No

8 Floor 2 - Dining Area

Dimensions: 7'1" x 11'3"
Area: 80 sq. ft
Counted as living area: Yes

Heated: Yes
Finished: Yes
Enclosed: Yes
Contiguous: Yes
Permitted: Yes
Wet space: No
Addition: No
Conversion: No

116 Fawn Trail, Winchester, VA, US**9 Floor 2 - Bedroom**

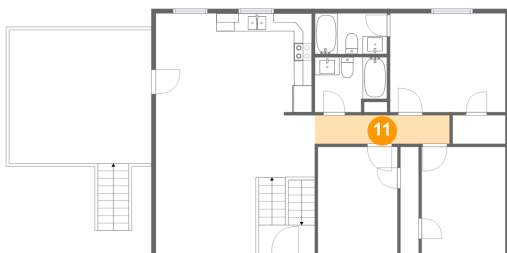
Dimensions: 12'10" x 11'0"
Area: 141 sq. ft
Counted as living area: Yes

Heated: Yes
Finished: Yes
Enclosed: Yes
Contiguous: Yes
Permitted: Yes
Wet space: No
Addition: No
Conversion: No

10 Floor 2 - Bedroom

Dimensions: 8'10" x 11'10"
Area: 105 sq. ft
Counted as living area: Yes

Heated: Yes
Finished: Yes
Enclosed: Yes
Contiguous: Yes
Permitted: Yes
Wet space: No
Addition: No
Conversion: No

11 Floor 2 - Hall

Dimensions: 15'0" x 3'2"
Area: 48 sq. ft
Counted as living area: Yes

Heated: Yes
Finished: Yes
Enclosed: Yes
Contiguous: Yes
Permitted: Yes
Wet space: No
Addition: No
Conversion: No

116 Fawn Trail,Winchester,VA,US

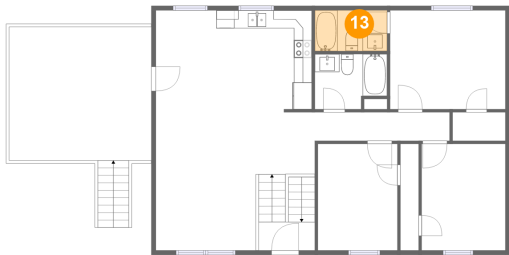
12 Floor 2 - Porch



Dimensions: 8'8" x 4'9"
Area: 41 sq. ft
Counted as living area: No

Heated: No
Finished: Yes
Enclosed: No
Contiguous: Yes
Permitted: Yes
Wet space: No
Addition: No
Conversion: No

13 Floor 2 - Bath



Dimensions: 8'0" x 4'6"
Area: 36 sq. ft
Counted as living area: Yes

Heated: Yes
Finished: Yes
Enclosed: Yes
Contiguous: Yes
Permitted: Yes
Wet space: Yes
Addition: No
Conversion: No