



Home report


2054 Catawba Trail, Nebo, McDowell County, North Carolina,
United States, 28761





Property summary


 **1** Garages


 **4** Bedrooms

 **3** Bathrooms

 **1** Half baths

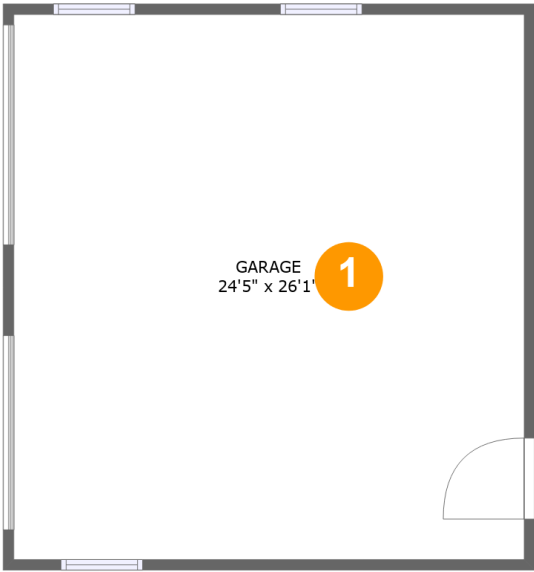
 **3** Floors

 **3,138** Gross living area sqft

 **5,292** Total sqft

Home report

2054 Catawba Trail, Nebo, McDowell County, North Carolina,
United States, 28761



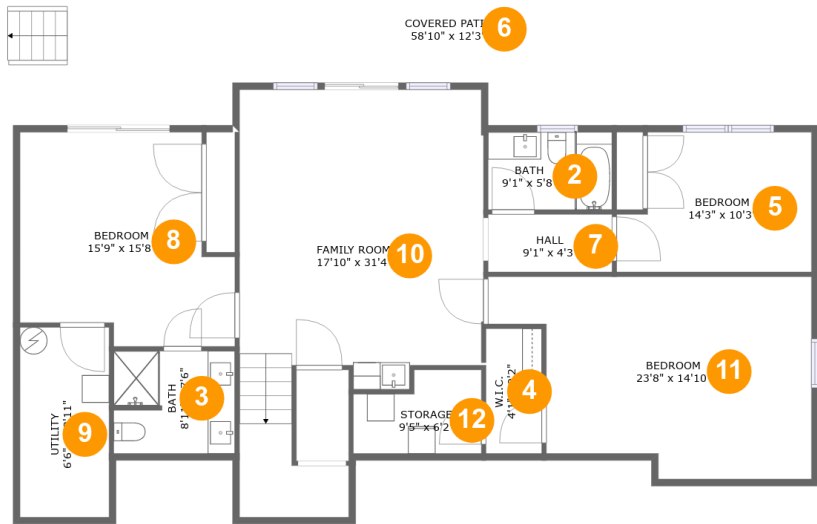
Room dimensions

Floor 1 Total sqft: 687 Living area: 0

#		Dimensions	sqft	Counted as living area
1	Garage	24'5" x 26'1"	636 sq. ft	No

Home report

2054 Catawba Trail, Nebo, McDowell County, North Carolina,
United States, 28761



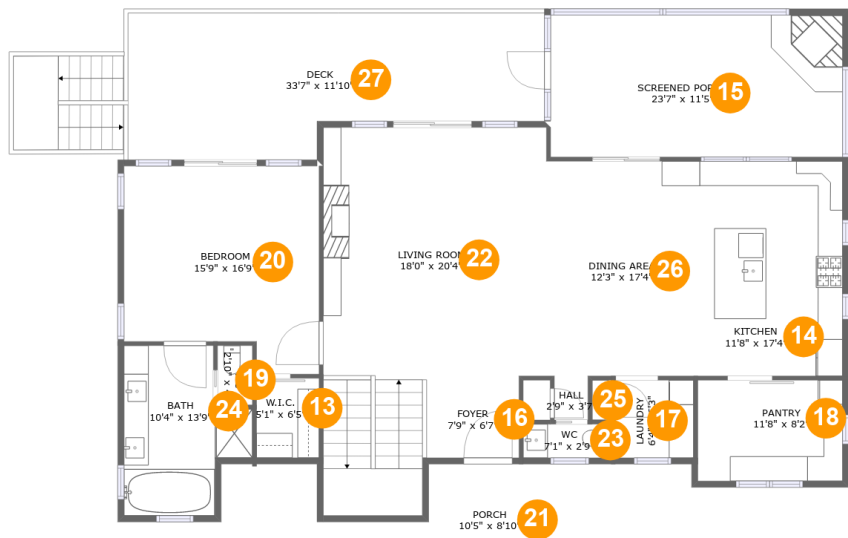
Room dimensions

Floor 2 Total sqft: 2268 Living area: 1523

#		Dimensions	sqft	Counted as living area
2	Bath	9'1" x 5'8"	52 sq. ft	Yes
3	Bath	8'11" x 7'6"	65 sq. ft	Yes
4	W.I.C.	4'1" x 9'2"	37 sq. ft	Yes
5	Bedroom	14'3" x 10'3"	132 sq. ft	Yes
6	Covered Patio	58'10" x 12'3"	663 sq. ft	No
7	Hall	9'1" x 4'3"	38 sq. ft	Yes
8	Bedroom	15'9" x 15'8"	213 sq. ft	Yes
9	Utility	6'6" x 13'11"	91 sq. ft	Yes
10	Family Room	17'10" x 31'4"	425 sq. ft	Yes
11	Bedroom	23'8" x 14'10"	287 sq. ft	Yes
12	Storage	9'5" x 6'2"	50 sq. ft	No

Home report

2054 Catawba Trail, Nebo, McDowell County, North Carolina,
United States, 28761



Room dimensions

Floor 3 Total sqft: 2337 Living area: 1615

#		Dimensions	sqft	Counted as living area
13	W.I.C.	5'1" x 6'5"	32 sq. ft	Yes
14	Kitchen	11'8" x 17'4"	202 sq. ft	Yes
15	Screened Porch	23'7" x 11'5"	270 sq. ft	No
16	Foyer	7'9" x 6'7"	51 sq. ft	Yes
17	Laundry	6'4" x 6'3"	40 sq. ft	Yes
18	Pantry	11'8" x 8'2"	95 sq. ft	Yes
19	WC	2'10" x 4'9"	13 sq. ft	Yes
20	Bedroom	15'9" x 16'9"	236 sq. ft	Yes
21	Porch	10'5" x 8'10"	91 sq. ft	No
22	Living Room	18'0" x 20'4"	451 sq. ft	Yes
23	WC	7'1" x 2'9"	19 sq. ft	Yes

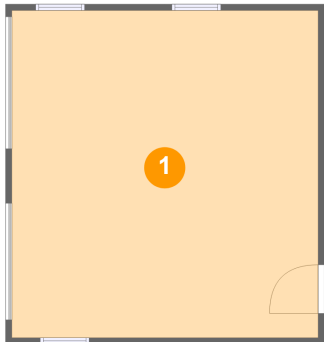
Home report

**2054 Catawba Trail, Nebo, McDowell County, North Carolina,
United States, 28761**

#		Dimensions	sqft	Counted as living area
24	Bath	10'4" x 13'9"	112 sq. ft	Yes
25	Hall	2'9" x 3'7"	10 sq. ft	Yes
26	Dining Area	12'3" x 17'4"	212 sq. ft	Yes
27	Deck	33'7" x 11'10"	340 sq. ft	No

2054 Catawba Trail, Nebo, McDowell County, North Carolina,
United States, 28761

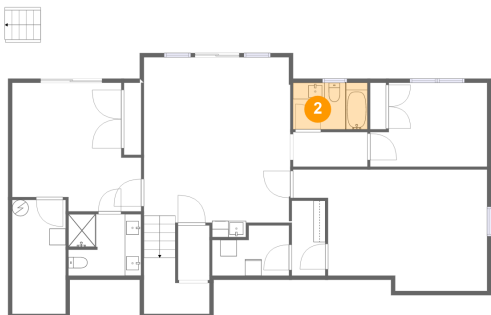
1 Floor 1 - Garage



Dimensions: 24'5" x 26'1"
Area: 636 sq. ft
Counted as living area: No

Heated: No
Finished: No
Enclosed: Yes
Contiguous: Yes
Permitted: Yes
Wet space: No
Addition: No
Conversion: No

2 Floor 2 - Bath

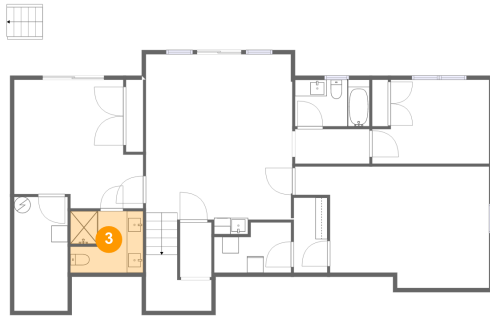


Dimensions: 9'1" x 5'8"
Area: 52 sq. ft
Counted as living area: Yes

Heated: Yes
Finished: Yes
Enclosed: Yes
Contiguous: Yes
Permitted: Yes
Wet space: Yes
Addition: No
Conversion: No

2054 Catawba Trail, Nebo, McDowell County, North Carolina,
United States, 28761

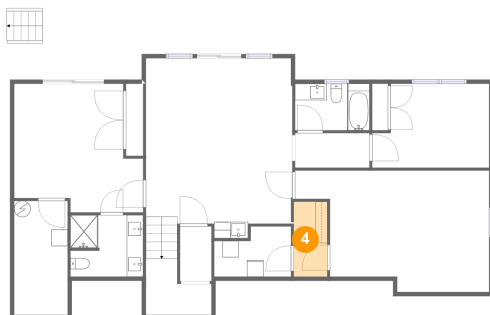
3 Floor 2 - Bath



Dimensions: 8'11" x 7'6"
Area: 65 sq. ft
Counted as living area: Yes

Heated: Yes
Finished: Yes
Enclosed: Yes
Contiguous: Yes
Permitted: Yes
Wet space: Yes
Addition: No
Conversion: No

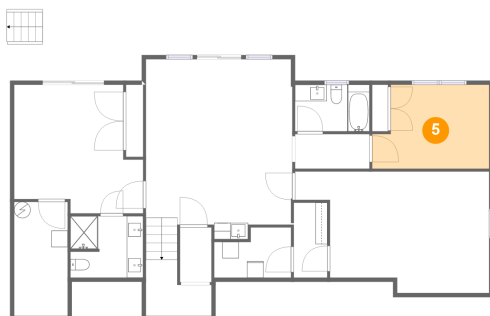
4 Floor 2 - W.I.C.



Dimensions: 4'1" x 9'2"
Area: 37 sq. ft
Counted as living area: Yes

Heated: Yes
Finished: Yes
Enclosed: Yes
Contiguous: Yes
Permitted: Yes
Wet space: No
Addition: No
Conversion: No

5 Floor 2 - Bedroom

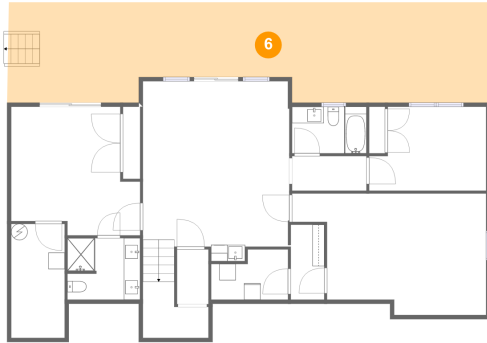


Dimensions: 14'3" x 10'3"
Area: 132 sq. ft
Counted as living area: Yes

Heated: Yes
Finished: Yes
Enclosed: Yes
Contiguous: Yes
Permitted: Yes
Wet space: No
Addition: No
Conversion: No

2054 Catawba Trail, Nebo, McDowell County, North Carolina,
United States, 28761

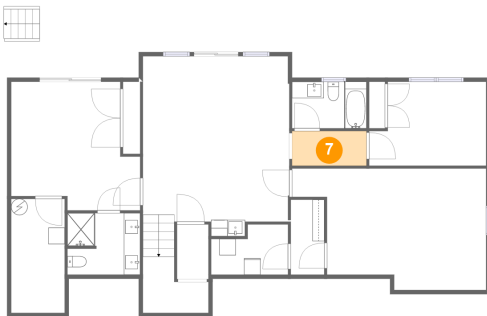
6 Floor 2 - Covered Patio



Dimensions: 58'10" x 12'3"
Area: 663 sq. ft
Counted as living area: No

Heated: No
Finished: Yes
Enclosed: No
Contiguous: Yes
Permitted: Yes
Wet space: No
Addition: No
Conversion: No

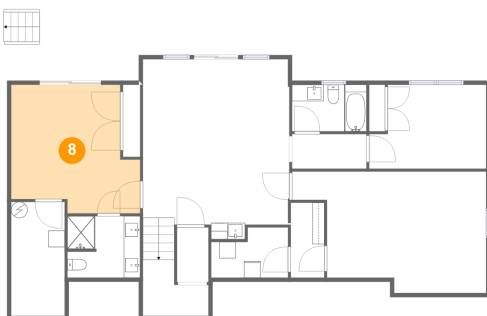
7 Floor 2 - Hall



Dimensions: 9'1" x 4'3"
Area: 38 sq. ft
Counted as living area: Yes

Heated: Yes
Finished: Yes
Enclosed: Yes
Contiguous: Yes
Permitted: Yes
Wet space: No
Addition: No
Conversion: No

8 Floor 2 - Bedroom

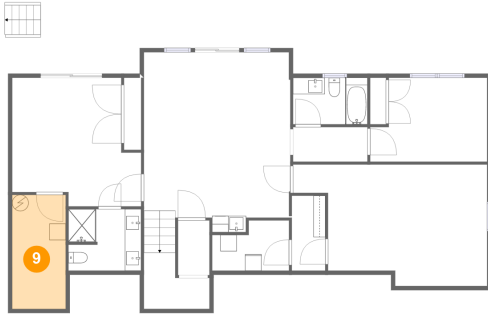


Dimensions: 15'9" x 15'8"
Area: 213 sq. ft
Counted as living area: Yes

Heated: Yes
Finished: Yes
Enclosed: Yes
Contiguous: Yes
Permitted: Yes
Wet space: No
Addition: No
Conversion: No

2054 Catawba Trail, Nebo, McDowell County, North Carolina,
United States, 28761

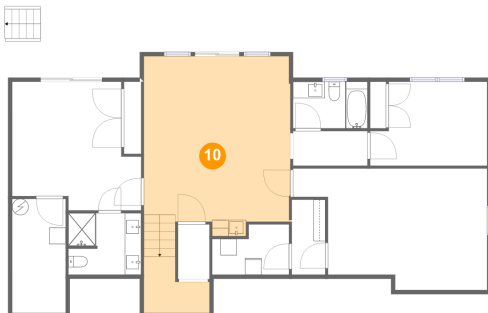
9 Floor 2 - Utility



Dimensions: 6'6" x 13'11"
Area: 91 sq. ft
Counted as living area: Yes

Heated: Yes
Finished: Yes
Enclosed: Yes
Contiguous: Yes
Permitted: Yes
Wet space: No
Addition: No
Conversion: No

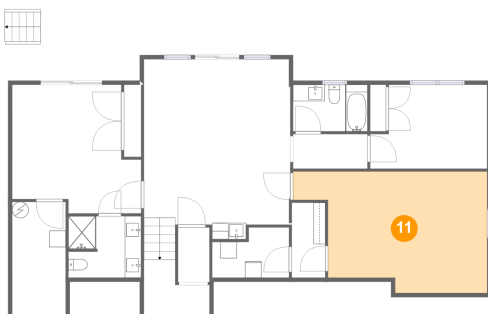
10 Floor 2 - Family Room



Dimensions: 17'10" x 31'4"
Area: 425 sq. ft
Counted as living area: Yes

Heated: Yes
Finished: Yes
Enclosed: Yes
Contiguous: Yes
Permitted: Yes
Wet space: No
Addition: No
Conversion: No

11 Floor 2 - Bedroom



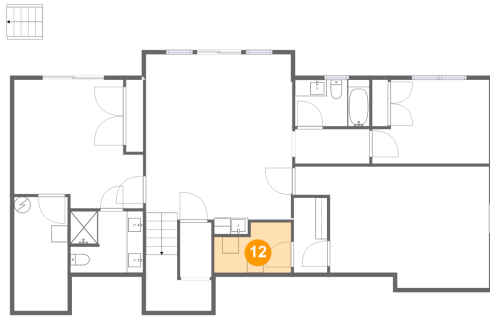
Dimensions: 23'8" x 14'10"
Area: 287 sq. ft
Counted as living area: Yes

Heated: Yes
Finished: Yes
Enclosed: Yes
Contiguous: Yes
Permitted: Yes
Wet space: No
Addition: No
Conversion: No

Home report

2054 Catawba Trail, Nebo, McDowell County, North Carolina,
United States, 28761

12 Floor 2 - Storage



Dimensions: 9'5" x 6'2"
Area: 50 sq. ft
Counted as living area: No

Heated: No
Finished: No
Enclosed: No
Contiguous: Yes
Permitted: Yes
Wet space: No
Addition: No
Conversion: No

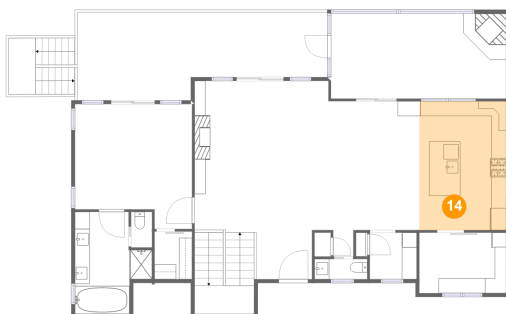
13 Floor 3 - W.I.C.



Dimensions: 5'1" x 6'5"
Area: 32 sq. ft
Counted as living area: Yes

Heated: Yes
Finished: Yes
Enclosed: Yes
Contiguous: Yes
Permitted: Yes
Wet space: No
Addition: No
Conversion: No

14 Floor 3 - Kitchen



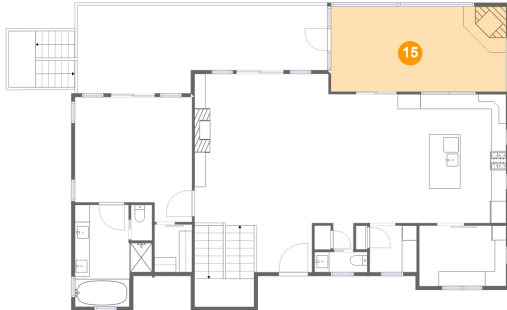
Dimensions: 11'8" x 17'4"
Area: 202 sq. ft
Counted as living area: Yes

Heated: Yes
Finished: Yes
Enclosed: Yes
Contiguous: Yes
Permitted: Yes
Wet space: No
Addition: No
Conversion: No

Home report

2054 Catawba Trail, Nebo, McDowell County, North Carolina,
United States, 28761

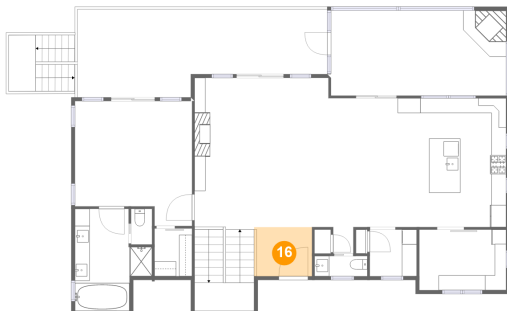
15 Floor 3 - Screened Porch



Dimensions: 23'7" x 11'5"
Area: 270 sq. ft
Counted as living area: No

Heated: No
Finished: Yes
Enclosed: No
Contiguous: Yes
Permitted: Yes
Wet space: No
Addition: No
Conversion: No

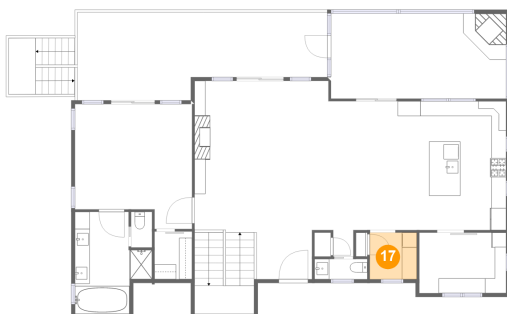
16 Floor 3 - Foyer



Dimensions: 7'9" x 6'7"
Area: 51 sq. ft
Counted as living area: Yes

Heated: Yes
Finished: Yes
Enclosed: Yes
Contiguous: Yes
Permitted: Yes
Wet space: No
Addition: No
Conversion: No

17 Floor 3 - Laundry



Dimensions: 6'4" x 6'3"
Area: 40 sq. ft
Counted as living area: Yes

Heated: Yes
Finished: Yes
Enclosed: Yes
Contiguous: Yes
Permitted: Yes
Wet space: No
Addition: No
Conversion: No

2054 Catawba Trail, Nebo, McDowell County, North Carolina,
United States, 28761

18 Floor 3 - Pantry



Dimensions: 11'8" x 8'2"
Area: 95 sq. ft
Counted as living area: Yes

Heated: Yes
Finished: Yes
Enclosed: Yes
Contiguous: Yes
Permitted: Yes
Wet space: No
Addition: No
Conversion: No

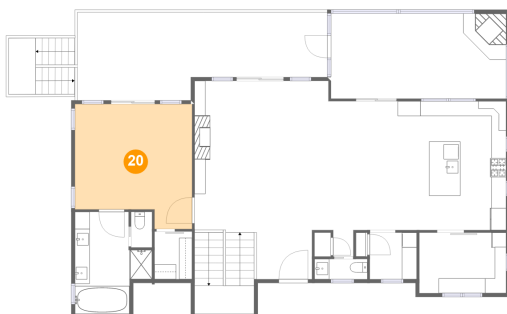
19 Floor 3 - WC



Dimensions: 2'10" x 4'9"
Area: 13 sq. ft
Counted as living area: Yes

Heated: Yes
Finished: Yes
Enclosed: Yes
Contiguous: Yes
Permitted: Yes
Wet space: Yes
Addition: No
Conversion: No

20 Floor 3 - Bedroom



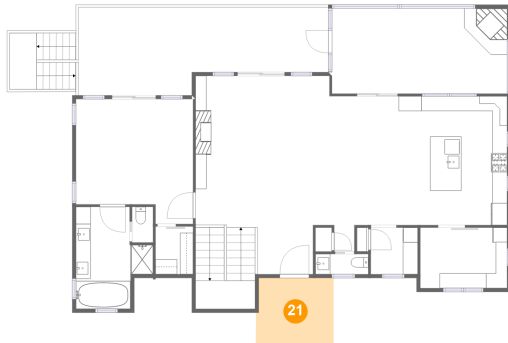
Dimensions: 15'9" x 16'9"
Area: 236 sq. ft
Counted as living area: Yes

Heated: Yes
Finished: Yes
Enclosed: Yes
Contiguous: Yes
Permitted: Yes
Wet space: No
Addition: No
Conversion: No

Home report

2054 Catawba Trail, Nebo, McDowell County, North Carolina,
United States, 28761

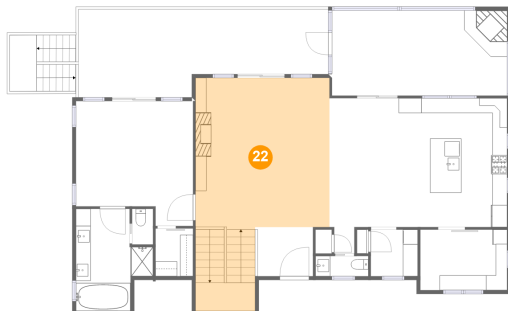
21 Floor 3 - Porch



Dimensions: 10'5" x 8'10"
Area: 91 sq. ft
Counted as living area: No

Heated: No
Finished: Yes
Enclosed: No
Contiguous: Yes
Permitted: Yes
Wet space: No
Addition: No
Conversion: No

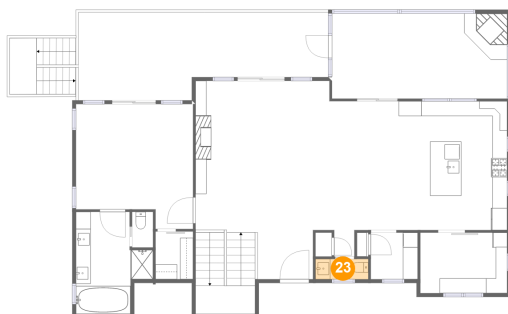
22 Floor 3 - Living Room



Dimensions: 18'0" x 20'4"
Area: 451 sq. ft
Counted as living area: Yes

Heated: Yes
Finished: Yes
Enclosed: Yes
Contiguous: Yes
Permitted: Yes
Wet space: No
Addition: No
Conversion: No

23 Floor 3 - WC



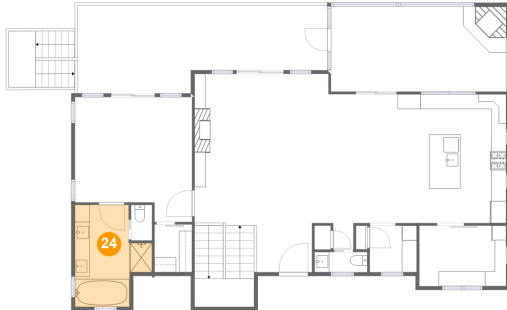
Dimensions: 7'1" x 2'9"
Area: 19 sq. ft
Counted as living area: Yes

Heated: Yes
Finished: Yes
Enclosed: Yes
Contiguous: Yes
Permitted: Yes
Wet space: Yes
Addition: No
Conversion: No

Home report

2054 Catawba Trail, Nebo, McDowell County, North Carolina,
United States, 28761

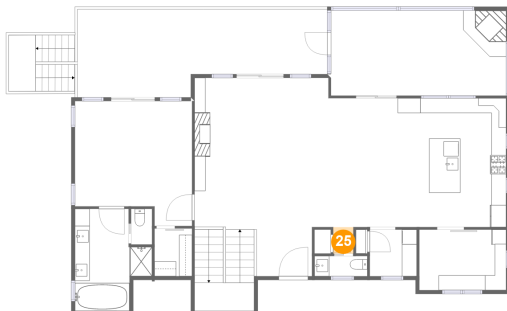
24 Floor 3 - Bath



Dimensions: 10'4" x 13'9"
Area: 112 sq. ft
Counted as living area: Yes

Heated: Yes
Finished: Yes
Enclosed: Yes
Contiguous: Yes
Permitted: Yes
Wet space: Yes
Addition: No
Conversion: No

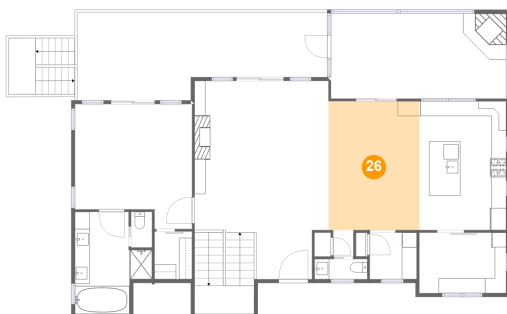
25 Floor 3 - Hall



Dimensions: 2'9" x 3'7"
Area: 10 sq. ft
Counted as living area: Yes

Heated: Yes
Finished: Yes
Enclosed: Yes
Contiguous: Yes
Permitted: Yes
Wet space: No
Addition: No
Conversion: No

26 Floor 3 - Dining Area

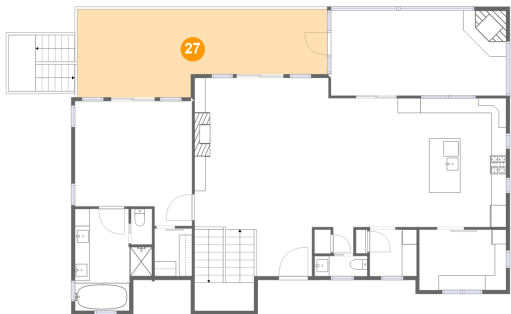


Dimensions: 12'3" x 17'4"
Area: 212 sq. ft
Counted as living area: Yes

Heated: Yes
Finished: Yes
Enclosed: Yes
Contiguous: Yes
Permitted: Yes
Wet space: No
Addition: No
Conversion: No

2054 Catawba Trail, Nebo, McDowell County, North Carolina,
United States, 28761

27 Floor 3 - Deck



Dimensions: 33'7" x 11'10"
Area: 340 sq. ft
Counted as living area: No

Heated: No
Finished: Yes
Enclosed: No
Contiguous: Yes
Permitted: Yes
Wet space: No
Addition: No
Conversion: No