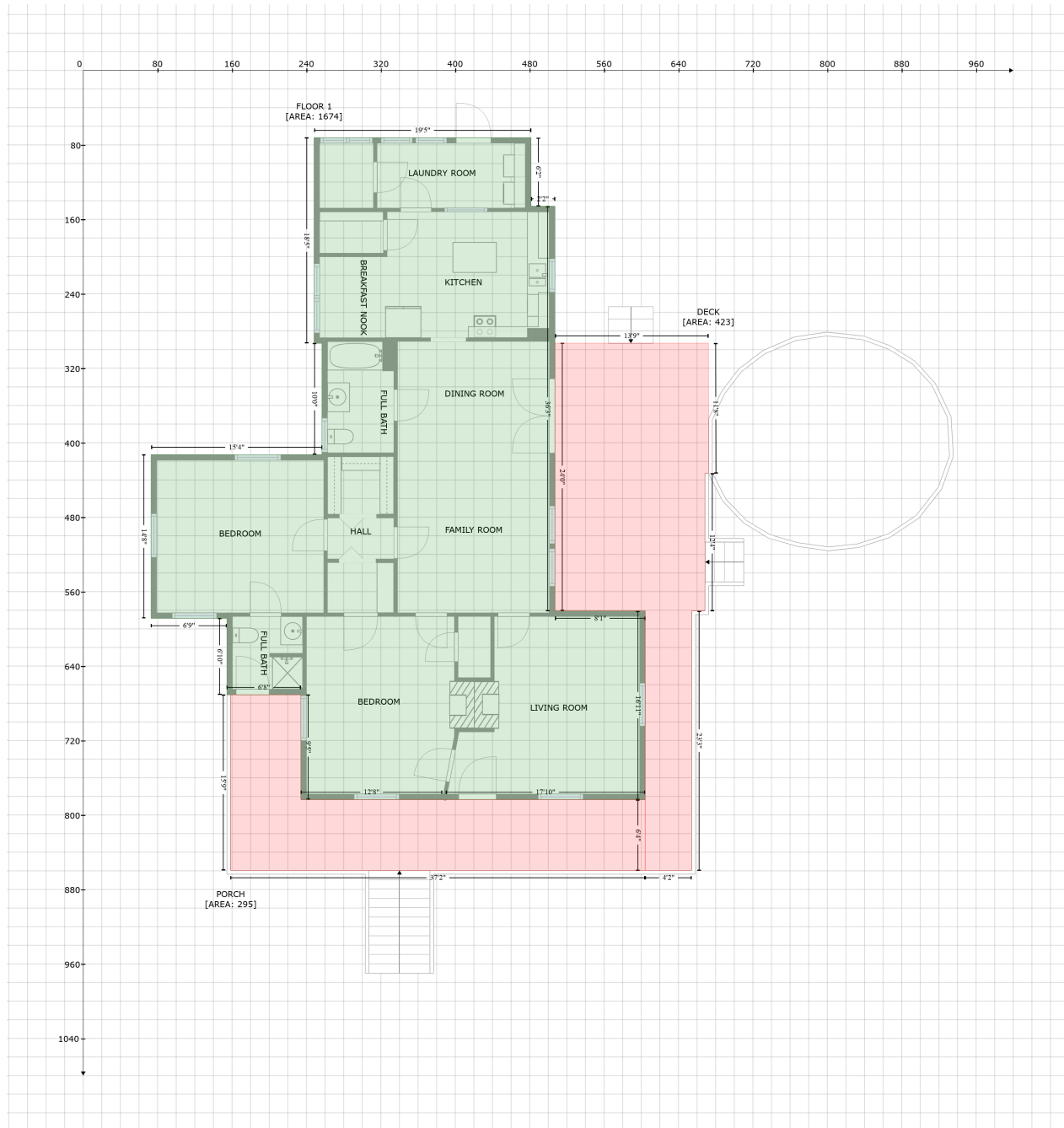


4 Courtney St, Pelzer, SC, United States

Gross Living Area: 1674 sq. ft



Space

Area (sq. ft)

Calculation Coordinate Polygon Area Algorithm using inches

FLOOR 1
(Living area)

1674

$$\begin{aligned}
 & -((481.5 + 481.5) * (72.3 - 145.9) + (481.5 + 507.2) * (145.9 - 145.9) + (507.2 + 507.2) * (145.9 - \\
 & 580.8) + (507.2 + 604.2) * (580.8 - 580.8) + (604.2 + 604.2) * (580.8 - 783.5) + (604.2 + 390.1) * \\
 & (783.5 - 783.5) + (390.1 + 390.1) * (783.5 - 784.2) + (390.1 + 386.1) * (784.2 - 783.5) + (386.1 + \\
 & 234) * (783.5 - 783.5) + (234 + 234) * (783.5 - 670.9) + (234 + 154.5) * (670.9 - 670.9) + (154.5 + \\
 & 154.5) * (670.9 - 588.8) + (154.5 + 73) * (588.8 - 588.8) + (73 + 73) * (588.8 - 412.8) + (73 + \\
 & 256.7) * (412.8 - 412.8) + (256.7 + 256.7) * (412.8 - 293.2) + (256.7 + 248.2) * (293.2 - 293.2) + \\
 & (248.2 + 248.2) * (293.2 - 72.3) + (248.2 + 481.5) * (72.3 - 72.3)) * 0.5 * 0.00694
 \end{aligned}$$

4 Courtney St, Pelzer, SC, United States

Gross Living Area: 1674 sq. ft

Space	Area (sq. ft)	Calculation <small>Coordinate Polygon Area Algorithm using inches</small>
DECK (Non-living area)	423	$-\left((672.1 + 672.5) * (293 - 432.8) + (672.5 + 668.5) * (432.8 - 432.8) + (668.5 + 668.5) * (432.8 - 580.8) + (668.5 + 654.3) * (580.8 - 580.8) + (654.3 + 654.3) * (580.8 - 859.6) + (654.3 + 604.2) * (859.6 - 859.6) + (604.2 + 604.2) * (859.6 - 580.8) + (604.2 + 507.2) * (580.8 - 580.8) + (507.2 + 507.2) * (580.8 - 293) + (507.2 + 672.1) * (293 - 293)\right) * 0.5 * 0.00694$
PORCH (Non-living area)	295	$-\left((234 + 234) * (670.9 - 783.5) + (234 + 386.1) * (783.5 - 783.5) + (386.1 + 390.1) * (783.5 - 784.2) + (390.1 + 390.1) * (784.2 - 783.5) + (390.1 + 604.2) * (783.5 - 783.5) + (604.2 + 604.2) * (783.5 - 859.6) + (604.2 + 158.5) * (859.6 - 859.6) + (158.5 + 158.5) * (859.6 - 670.9) + (158.5 + 234) * (670.9 - 670.9)\right) * 0.5 * 0.00694$