



Home report


1983 Piney River Drive, Loveland, Larimer County, Colorado,  
United States, 80538





Property summary


 **0** Garages


 **3** Bedrooms

 **2** Bathrooms

 **1** Half baths

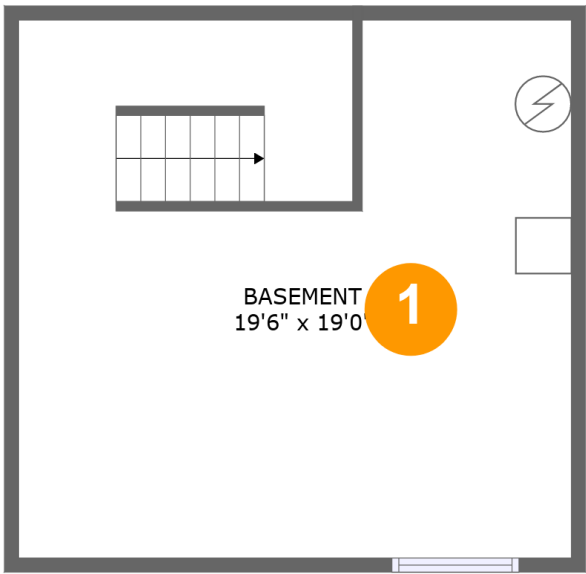
 **4** Floors

 **1,742** Gross living area sqft

 **2,207** Total sqft

Home report

1983 Piney River Drive, Loveland, Larimer County, Colorado,  
United States, 80538



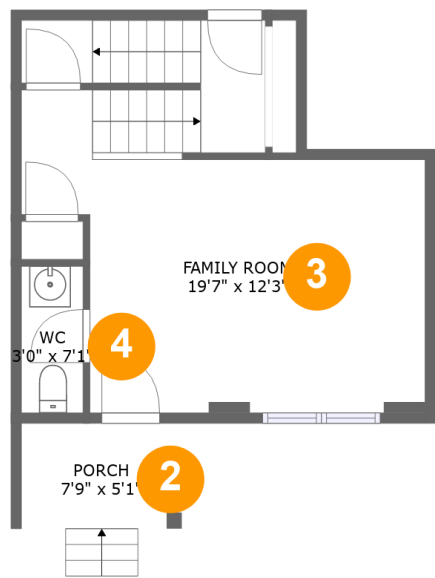
Room dimensions

Floor 1 Total sqft: 413    Living area: 0

| # |          | Max Dimensions | sqft       | Included |
|---|----------|----------------|------------|----------|
| 1 | Basement | 19'6" x 19'0"  | 368 sq. ft | No       |

Home report

1983 Piney River Drive, Loveland, Larimer County, Colorado,  
United States, 80538



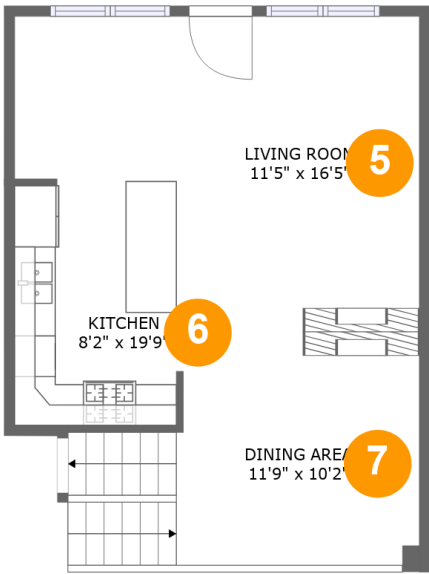
Room dimensions

Floor 2 Total sqft: 413    Living area: 361

| # |             | Max Dimensions | sqft       | Included |
|---|-------------|----------------|------------|----------|
| 2 | Porch       | 7'9" x 5'1"    | 40 sq. ft  | No       |
| 3 | Family Room | 19'7" x 12'3"  | 238 sq. ft | Yes      |
| 4 | WC          | 3'0" x 7'1"    | 21 sq. ft  | Yes      |

Home report

1983 Piney River Drive, Loveland, Larimer County, Colorado,  
United States, 80538



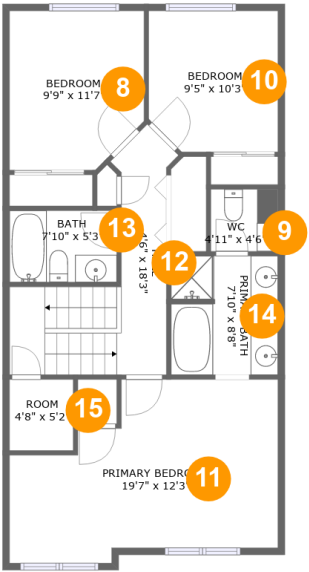
Room dimensions

Floor 3 Total sqft: 545    Living area: 545

| # |             | Max Dimensions | sqft       | Included |
|---|-------------|----------------|------------|----------|
| 5 | Living Room | 11'5" x 16'5"  | 187 sq. ft | Yes      |
| 6 | Kitchen     | 8'2" x 19'9"   | 160 sq. ft | Yes      |
| 7 | Dining Area | 11'9" x 10'2"  | 157 sq. ft | Yes      |

Home report

1983 Piney River Drive, Loveland, Larimer County, Colorado,  
United States, 80538



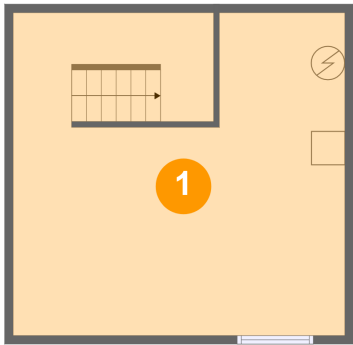
Room dimensions

Floor 4 Total sqft: 836    Living area: 836

| #  |                 | Max Dimensions | sqft       | Included |
|----|-----------------|----------------|------------|----------|
| 8  | Bedroom         | 9'9" x 11'7"   | 108 sq. ft | Yes      |
| 9  | WC              | 4'11" x 4'6"   | 22 sq. ft  | Yes      |
| 10 | Bedroom         | 9'5" x 10'3"   | 94 sq. ft  | Yes      |
| 11 | Primary Bedroom | 19'7" x 12'3"  | 210 sq. ft | Yes      |
| 12 | Hall            | 4'6" x 18'3"   | 111 sq. ft | Yes      |
| 13 | Bath            | 7'10" x 5'3"   | 41 sq. ft  | Yes      |
| 14 | Primary Bath    | 7'10" x 8'8"   | 67 sq. ft  | Yes      |
| 15 | Room            | 4'8" x 5'2"    | 24 sq. ft  | Yes      |

1983 Piney River Drive, Loveland, Larimer County, Colorado,  
United States, 80538

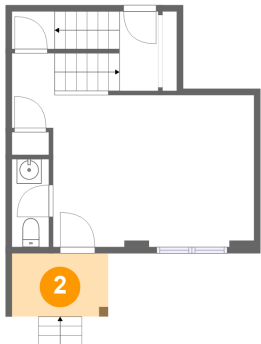
1 Floor 1 - Basement



Max Dimensions: 19'6" x 19'0"  
Calculated Area: 368 sq. ft  
Included: No

Heated: Yes  
Finished: No  
Enclosed: Yes  
Contiguous: Yes  
Permitted: Yes  
Wet space: No  
Addition: No  
Conversion: No

2 Floor 2 - Porch



Max Dimensions: 7'9" x 5'1"  
Calculated Area: 40 sq. ft  
Included: No

Heated: No  
Finished: Yes  
Enclosed: No  
Contiguous: Yes  
Permitted: Yes  
Wet space: No  
Addition: No  
Conversion: No

1983 Piney River Drive, Loveland, Larimer County, Colorado,  
United States, 80538

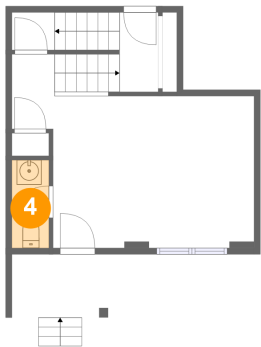
3 Floor 2 - Family Room



Max Dimensions: 19'7" x 12'3"  
Calculated Area: 238 sq. ft  
Included: Yes

Heated: Yes  
Finished: Yes  
Enclosed: Yes  
Contiguous: Yes  
Permitted: Yes  
Wet space: No  
Addition: No  
Conversion: No

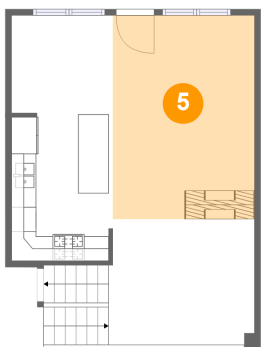
4 Floor 2 - WC



Max Dimensions: 3'0" x 7'1"  
Calculated Area: 21 sq. ft  
Included: Yes

Heated: Yes  
Finished: Yes  
Enclosed: Yes  
Contiguous: Yes  
Permitted: Yes  
Wet space: Yes  
Addition: No  
Conversion: No

5 Floor 3 - Living Room

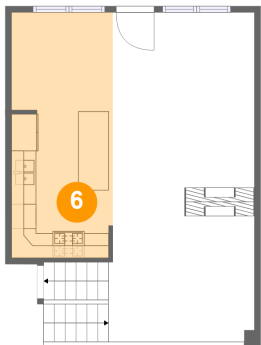


Max Dimensions: 11'5" x 16'5"  
Calculated Area: 187 sq. ft  
Included: Yes

Heated: Yes  
Finished: Yes  
Enclosed: Yes  
Contiguous: Yes  
Permitted: Yes  
Wet space: No  
Addition: No  
Conversion: No

1983 Piney River Drive, Loveland, Larimer County, Colorado,  
United States, 80538

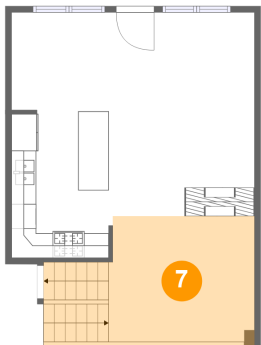
6 Floor 3 - Kitchen



Max Dimensions: 8'2" x 19'9"  
Calculated Area: 160 sq. ft  
Included: Yes

Heated: Yes  
Finished: Yes  
Enclosed: Yes  
Contiguous: Yes  
Permitted: Yes  
Wet space: No  
Addition: No  
Conversion: No

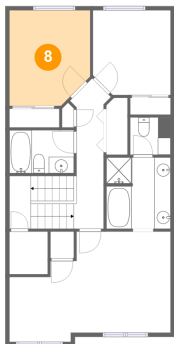
7 Floor 3 - Dining Area



Max Dimensions: 11'9" x 10'2"  
Calculated Area: 157 sq. ft  
Included: Yes

Heated: Yes  
Finished: Yes  
Enclosed: Yes  
Contiguous: Yes  
Permitted: Yes  
Wet space: No  
Addition: No  
Conversion: No

8 Floor 4 - Bedroom



Max Dimensions: 9'9" x 11'7"  
Calculated Area: 108 sq. ft  
Included: Yes

Heated: Yes  
Finished: Yes  
Enclosed: Yes  
Contiguous: Yes  
Permitted: Yes  
Wet space: No  
Addition: No  
Conversion: No



1983 Piney River Drive, Loveland, Larimer County, Colorado,  
United States, 80538

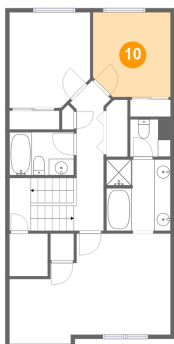
9 Floor 4 - WC



Max Dimensions: 4'11" x 4'6"  
Calculated Area: 22 sq. ft  
Included: Yes

Heated: Yes  
Finished: Yes  
Enclosed: Yes  
Contiguous: Yes  
Permitted: Yes  
Wet space: Yes  
Addition: No  
Conversion: No

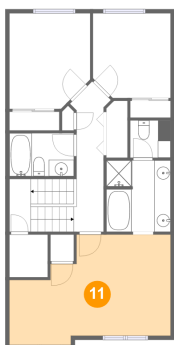
10 Floor 4 - Bedroom



Max Dimensions: 9'5" x 10'3"  
Calculated Area: 94 sq. ft  
Included: Yes

Heated: Yes  
Finished: Yes  
Enclosed: Yes  
Contiguous: Yes  
Permitted: Yes  
Wet space: No  
Addition: No  
Conversion: No

11 Floor 4 - Primary Bedroom



Max Dimensions: 19'7" x 12'3"  
Calculated Area: 210 sq. ft  
Included: Yes

Heated: Yes  
Finished: Yes  
Enclosed: Yes  
Contiguous: Yes  
Permitted: Yes  
Wet space: No  
Addition: No  
Conversion: No

1983 Piney River Drive, Loveland, Larimer County, Colorado,  
United States, 80538

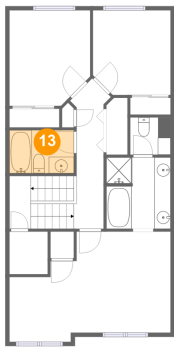
12 Floor 4 - Hall



Max Dimensions: 4'6" x 18'3"  
Calculated Area: 111 sq. ft  
Included: Yes

Heated: Yes  
Finished: Yes  
Enclosed: Yes  
Contiguous: Yes  
Permitted: Yes  
Wet space: No  
Addition: No  
Conversion: No

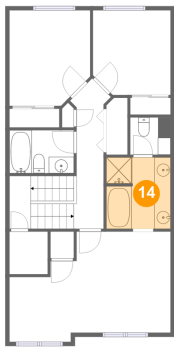
13 Floor 4 - Bath



Max Dimensions: 7'10" x 5'3"  
Calculated Area: 41 sq. ft  
Included: Yes

Heated: Yes  
Finished: Yes  
Enclosed: Yes  
Contiguous: Yes  
Permitted: Yes  
Wet space: Yes  
Addition: No  
Conversion: No

14 Floor 4 - Primary Bath



Max Dimensions: 7'10" x 8'8"  
Calculated Area: 67 sq. ft  
Included: Yes

Heated: Yes  
Finished: Yes  
Enclosed: Yes  
Contiguous: Yes  
Permitted: Yes  
Wet space: Yes  
Addition: No  
Conversion: No

1983 Piney River Drive, Loveland, Larimer County, Colorado,  
United States, 80538

**15** Floor 4 - Room



Max Dimensions: 4'8" x 5'2"  
Calculated Area: 24 sq. ft  
Included: Yes

Heated: Yes  
Finished: Yes  
Enclosed: Yes  
Contiguous: Yes  
Permitted: Yes  
Wet space: No  
Addition: No  
Conversion: No