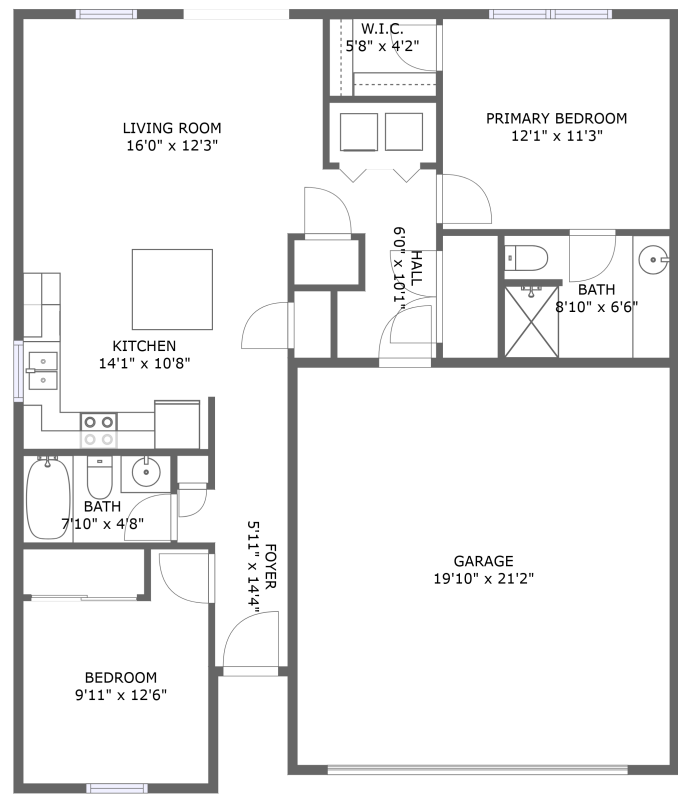


Home report

368 Bonneville Ave,Fort Lupton,CO,US



FLOOR 1

Total Area: 916 sq. ft


Floor 1: 916 sq. ft

Excluded: Garage 421 sq. ft, Walls: 99 sq. ft

Property summary

 **1** Floors

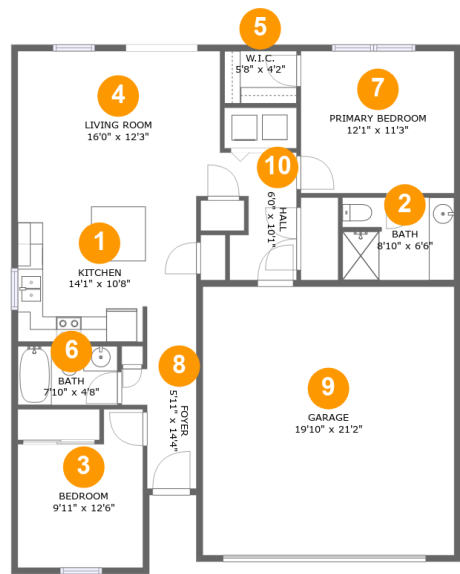
 **2** Bedrooms

 **2** Bathrooms

 **1** Garages

Home report

368 Bonneville Ave,Fort Lupton,CO,US

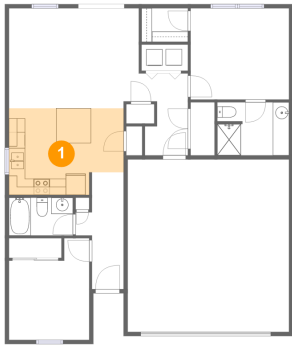


Room dimensions

Floor 1 Total:916sqft Excluded: 421sqft

#		Max Dimensions	sqft	Included
1	Kitchen	14'1" x 10'8"	138 sq. ft	Yes
2	Bath	8'10" x 6'6"	57 sq. ft	Yes
3	Bedroom	9'11" x 12'6"	105 sq. ft	Yes
4	Living Room	16'0" x 12'3"	195 sq. ft	Yes
5	W.I.C.	5'8" x 4'2"	24 sq. ft	Yes
6	Bath	7'10" x 4'8"	37 sq. ft	Yes
7	Primary Bedroom	12'1" x 11'3"	136 sq. ft	Yes
8	Foyer	5'11" x 14'4"	62 sq. ft	Yes
9	Garage	19'10" x 21'2"	421 sq. ft	No
10	Hall	6'0" x 10'1"	51 sq. ft	Yes

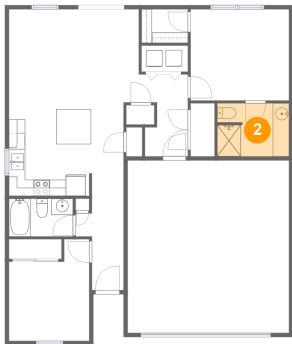
1 Floor 1 - Kitchen



Max Dimensions: 14'1" x 10'8"
Calculated Area: 138 sq. ft
Included: Yes

Heated: Yes
Finished: Yes
Enclosed: Yes
Contiguous: Yes
Permitted: Yes
Wet space: No
Addition: No
Conversion: No

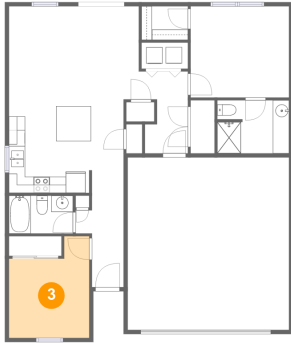
2 Floor 1 - Bath



Max Dimensions: 8'10" x 6'6"
Calculated Area: 57 sq. ft
Included: Yes

Heated: Yes
Finished: Yes
Enclosed: Yes
Contiguous: Yes
Permitted: Yes
Wet space: Yes
Addition: No
Conversion: No

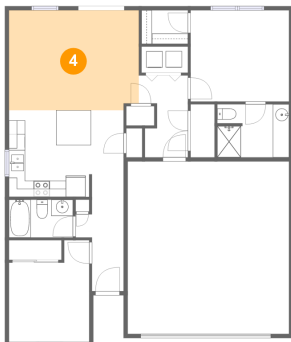
3 Floor 1 - Bedroom



Max Dimensions: 9'11" x 12'6"
Calculated Area: 105 sq. ft
Included: Yes

Heated: Yes
Finished: Yes
Enclosed: Yes
Contiguous: Yes
Permitted: Yes
Wet space: No
Addition: No
Conversion: No

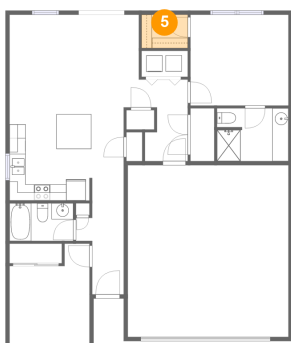
4 Floor 1 - Living Room



Max Dimensions: 16'0" x 12'3"
Calculated Area: 195 sq. ft
Included: Yes

Heated: Yes
Finished: Yes
Enclosed: Yes
Contiguous: Yes
Permitted: Yes
Wet space: No
Addition: No
Conversion: No

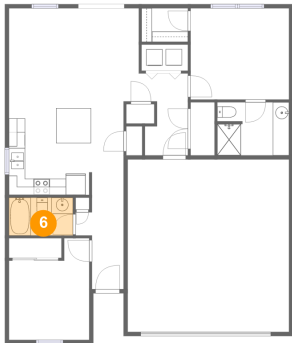
5 Floor 1 - W.I.C.



Max Dimensions: 5'8" x 4'2"
Calculated Area: 24 sq. ft
Included: Yes

Heated: Yes
Finished: Yes
Enclosed: Yes
Contiguous: Yes
Permitted: Yes
Wet space: No
Addition: No
Conversion: No

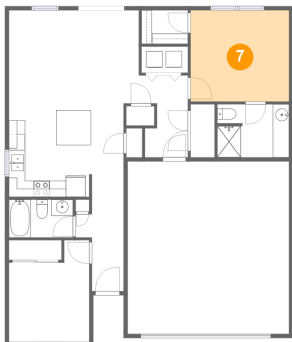
6 Floor 1 - Bath



Max Dimensions: 7'10" x 4'8"
Calculated Area: 37 sq. ft
Included: Yes

Heated: Yes
Finished: Yes
Enclosed: Yes
Contiguous: Yes
Permitted: Yes
Wet space: Yes
Addition: No
Conversion: No

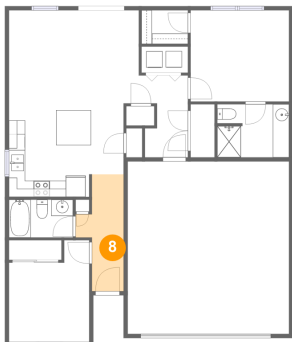
7 Floor 1 - Primary Bedroom



Max Dimensions: 12'1" x 11'3"
Calculated Area: 136 sq. ft
Included: Yes

Heated: Yes
Finished: Yes
Enclosed: Yes
Contiguous: Yes
Permitted: Yes
Wet space: No
Addition: No
Conversion: No

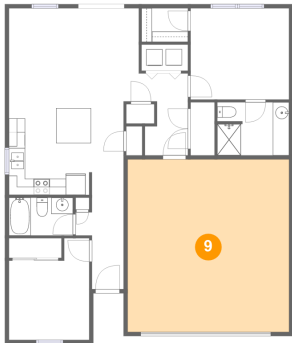
8 Floor 1 - Foyer



Max Dimensions: 5'11" x 14'4"
Calculated Area: 62 sq. ft
Included: Yes

Heated: Yes
Finished: Yes
Enclosed: Yes
Contiguous: Yes
Permitted: Yes
Wet space: No
Addition: No
Conversion: No

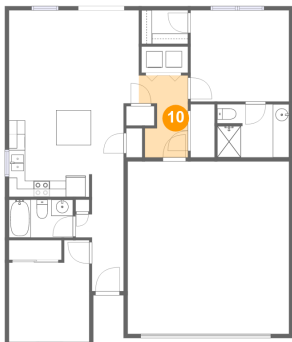
9 Floor 1 - Garage



Max Dimensions: 19'10" x 21'2"
Calculated Area: 421 sq. ft
Included: No

Heated: No
Finished: No
Enclosed: Yes
Contiguous: Yes
Permitted: Yes
Wet space: No
Addition: No
Conversion: No

10 Floor 1 - Hall



Max Dimensions: 6'0" x 10'1"
Calculated Area: 51 sq. ft
Included: Yes

Heated: Yes
Finished: Yes
Enclosed: Yes
Contiguous: Yes
Permitted: Yes
Wet space: No
Addition: No
Conversion: No