

# 1840 Summerfields Crescent, Orléans Village - Chateauneuf, Orléans, Ontario, Canada, K1C 7B7



## Property summary

 **1** Garages

 **3** Bedrooms

 **2** Bathrooms

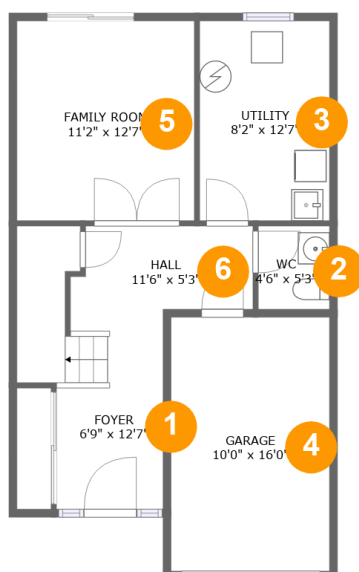
 **1** Half baths

 **3** Floors

 **1,833**  
Gross living  
area sqft

 **2,122**  
Total sqft

# 1840 Summerfields Crescent, Orléans Village - Châteauneuf, Orléans, Ontario, Canada, K1C 7B7



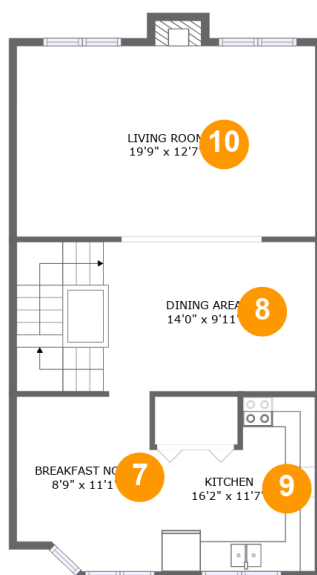
## Room dimensions

Floor 1

Total sqft: 685 Living area: 403

#		Dimensions	sqft	Counted as living area
1	Foyer	6'9" x 12'7"	114 sq. ft	Yes
2	WC	4'6" x 5'3"	24 sq. ft	Yes
3	Utility	8'2" x 12'7"	103 sq. ft	No
4	Garage	10'0" x 16'0"	160 sq. ft	No
5	Family Room	11'2" x 12'7"	141 sq. ft	Yes
6	Hall	11'6" x 5'3"	57 sq. ft	Yes

# 1840 Summerfields Crescent, Orléans Village - Châteauneuf, Orléans, Ontario, Canada, K1C 7B7



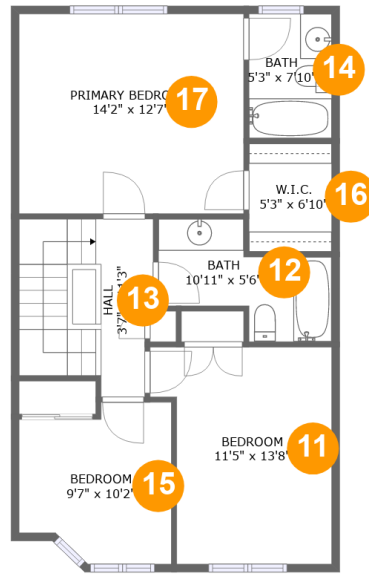
## Room dimensions

Floor 2

Total sqft: 722 Living area: 715

#		Dimensions	sqft	Counted as living area
7	Breakfast Nook	8'9" x 11'1"	92 sq. ft	Yes
8	Dining Area	14'0" x 9'11"	195 sq. ft	Yes
9	Kitchen	16'2" x 11'7"	109 sq. ft	Yes
10	Living Room	19'9" x 12'7"	253 sq. ft	Yes

# 1840 Summerfields Crescent, Orléans Village - Châteauneuf, Orléans, Ontario, Canada, K1C 7B7



## Room dimensions

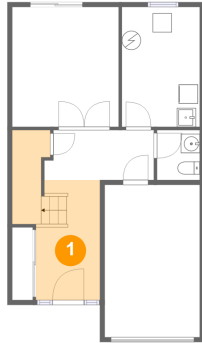
Floor 3

Total sqft: 715 Living area: 715

#		Dimensions	sqft	Counted as living area
11	Bedroom	11'5" x 13'8"	139 sq. ft	Yes
12	Bath	10'11" x 5'6"	58 sq. ft	Yes
13	Hall	3'7" x 11'3"	85 sq. ft	Yes
14	Bath	5'3" x 7'10"	41 sq. ft	Yes
15	Bedroom	9'7" x 10'2"	86 sq. ft	Yes
16	W.I.C.	5'3" x 6'10"	36 sq. ft	Yes
17	Primary Bedroom	14'2" x 12'7"	178 sq. ft	Yes

# 1840 Summerfields Crescent, Orléans Village - Châteauneuf, Orléans, Ontario, Canada, K1C 7B7

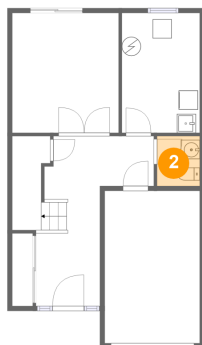
## 1 Floor 1 - Foyer



Dimensions: 6'9" x 12'7"  
Area: 114 sq. ft  
Counted as living area: Yes

Heated: Yes  
Finished: Yes  
Enclosed: Yes  
Contiguous: Yes  
Permitted: Yes  
Wet space: No  
Addition: No  
Conversion: No

## 2 Floor 1 - WC

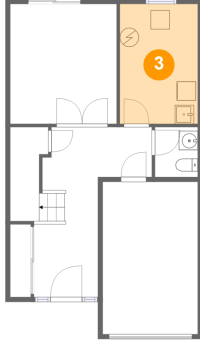


Dimensions: 4'6" x 5'3"  
Area: 24 sq. ft  
Counted as living area: Yes

Heated: Yes  
Finished: Yes  
Enclosed: Yes  
Contiguous: Yes  
Permitted: Yes  
Wet space: Yes  
Addition: No  
Conversion: No

# 1840 Summerfields Crescent, Orléans Village - Châteauneuf, Orléans, Ontario, Canada, K1C 7B7

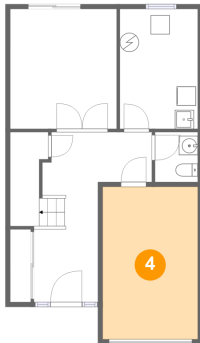
## 3 Floor 1 - Utility



Dimensions: 8'2" x 12'7"  
Area: 103 sq. ft  
Counted as living area: No

Heated: Yes  
Finished: No  
Enclosed: Yes  
Contiguous: Yes  
Permitted: Yes  
Wet space: No  
Addition: No  
Conversion: No

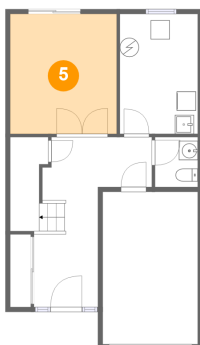
## 4 Floor 1 - Garage



Dimensions: 10'0" x 16'0"  
Area: 160 sq. ft  
Counted as living area: No

Heated: No  
Finished: No  
Enclosed: Yes  
Contiguous: Yes  
Permitted: Yes  
Wet space: No  
Addition: No  
Conversion: No

## 5 Floor 1 - Family Room

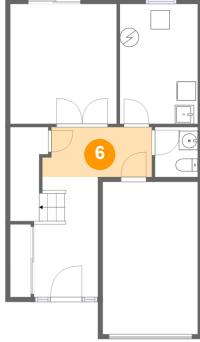


Dimensions: 11'2" x 12'7"  
Area: 141 sq. ft  
Counted as living area: Yes

Heated: Yes  
Finished: Yes  
Enclosed: Yes  
Contiguous: Yes  
Permitted: Yes  
Wet space: No  
Addition: No  
Conversion: No

# 1840 Summerfields Crescent, Orléans Village - Châteauneuf, Orléans, Ontario, Canada, K1C 7B7

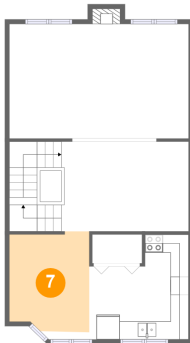
## 6 Floor 1 - Hall



Dimensions: 11'6" x 5'3"  
Area: 57 sq. ft  
Counted as living area: Yes

Heated: Yes  
Finished: Yes  
Enclosed: Yes  
Contiguous: Yes  
Permitted: Yes  
Wet space: No  
Addition: No  
Conversion: No

## 7 Floor 2 - Breakfast Nook



Dimensions: 8'9" x 11'1"  
Area: 92 sq. ft  
Counted as living area: Yes

Heated: Yes  
Finished: Yes  
Enclosed: Yes  
Contiguous: Yes  
Permitted: Yes  
Wet space: No  
Addition: No  
Conversion: No

## 8 Floor 2 - Dining Area

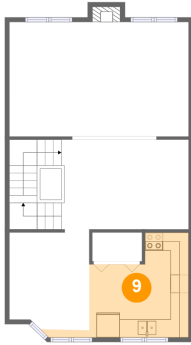


Dimensions: 14'0" x 9'11"  
Area: 195 sq. ft  
Counted as living area: Yes

Heated: Yes  
Finished: Yes  
Enclosed: Yes  
Contiguous: Yes  
Permitted: Yes  
Wet space: No  
Addition: No  
Conversion: No

# 1840 Summerfields Crescent, Orléans Village - Châteauneuf, Orléans, Ontario, Canada, K1C 7B7

## 9 Floor 2 - Kitchen



Dimensions: 16'2" x 11'7"  
Area: 109 sq. ft  
Counted as living area: Yes

Heated: Yes  
Finished: Yes  
Enclosed: Yes  
Contiguous: Yes  
Permitted: Yes  
Wet space: No  
Addition: No  
Conversion: No

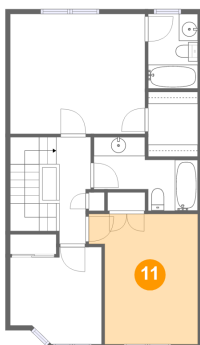
## 10 Floor 2 - Living Room



Dimensions: 19'9" x 12'7"  
Area: 253 sq. ft  
Counted as living area: Yes

Heated: Yes  
Finished: Yes  
Enclosed: Yes  
Contiguous: Yes  
Permitted: Yes  
Wet space: No  
Addition: No  
Conversion: No

## 11 Floor 3 - Bedroom



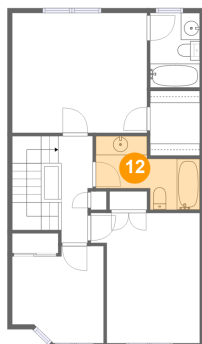
Dimensions: 11'5" x 13'8"  
Area: 139 sq. ft  
Counted as living area: Yes

Heated: Yes  
Finished: Yes  
Enclosed: Yes  
Contiguous: Yes  
Permitted: Yes  
Wet space: No  
Addition: No  
Conversion: No



# 1840 Summerfields Crescent, Orléans Village - Châteauneuf, Orléans, Ontario, Canada, K1C 7B7

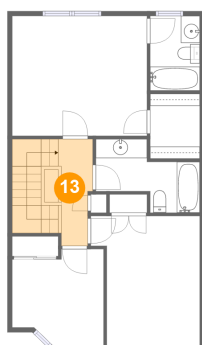
## 12 Floor 3 - Bath



Dimensions: 10'11" x 5'6"  
Area: 58 sq. ft  
Counted as living area: Yes

Heated: Yes  
Finished: Yes  
Enclosed: Yes  
Contiguous: Yes  
Permitted: Yes  
Wet space: Yes  
Addition: No  
Conversion: No

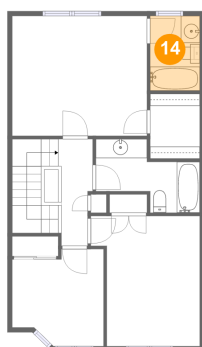
## 13 Floor 3 - Hall



Dimensions: 3'7" x 11'3"  
Area: 85 sq. ft  
Counted as living area: Yes

Heated: Yes  
Finished: Yes  
Enclosed: Yes  
Contiguous: Yes  
Permitted: Yes  
Wet space: No  
Addition: No  
Conversion: No

## 14 Floor 3 - Bath

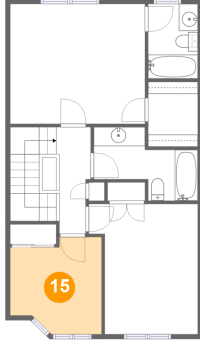


Dimensions: 5'3" x 7'10"  
Area: 41 sq. ft  
Counted as living area: Yes

Heated: Yes  
Finished: Yes  
Enclosed: Yes  
Contiguous: Yes  
Permitted: Yes  
Wet space: Yes  
Addition: No  
Conversion: No

# 1840 Summerfields Crescent, Orléans Village - Châteauneuf, Orléans, Ontario, Canada, K1C 7B7

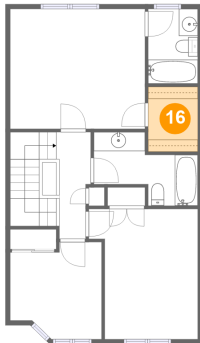
## 15 Floor 3 - Bedroom



Dimensions: 9'7" x 10'2"  
Area: 86 sq. ft  
Counted as living area: Yes

Heated: Yes  
Finished: Yes  
Enclosed: Yes  
Contiguous: Yes  
Permitted: Yes  
Wet space: No  
Addition: No  
Conversion: No

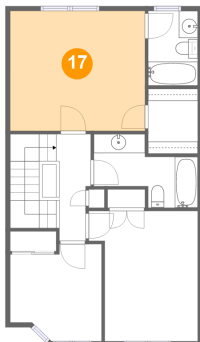
## 16 Floor 3 - W.I.C.



Dimensions: 5'3" x 6'10"  
Area: 36 sq. ft  
Counted as living area: Yes

Heated: Yes  
Finished: Yes  
Enclosed: Yes  
Contiguous: Yes  
Permitted: Yes  
Wet space: No  
Addition: No  
Conversion: No

## 17 Floor 3 - Primary Bedroom



Dimensions: 14'2" x 12'7"  
Area: 178 sq. ft  
Counted as living area: Yes

Heated: Yes  
Finished: Yes  
Enclosed: Yes  
Contiguous: Yes  
Permitted: Yes  
Wet space: No  
Addition: No  
Conversion: No