

Home report

115 Piper Glen Avenue, Oswego, Kendall County, Illinois, United States, 60543



Total Area: 4802 sq. ft
Below Ground: 1396 sq. ft, Floor 2: 1488 sq. ft, Floor 3: 1918 sq. ft
Excluded: Garage 666 sq. ft, Open to below 74 sq. ft, Walls: 310 sq. ft

Property summary

 **3** Floors

 **4** Bedrooms

 **2** Bathrooms

Home report

115 Piper Glen Avenue, Oswego, Kendall County, Illinois, United States, 60543



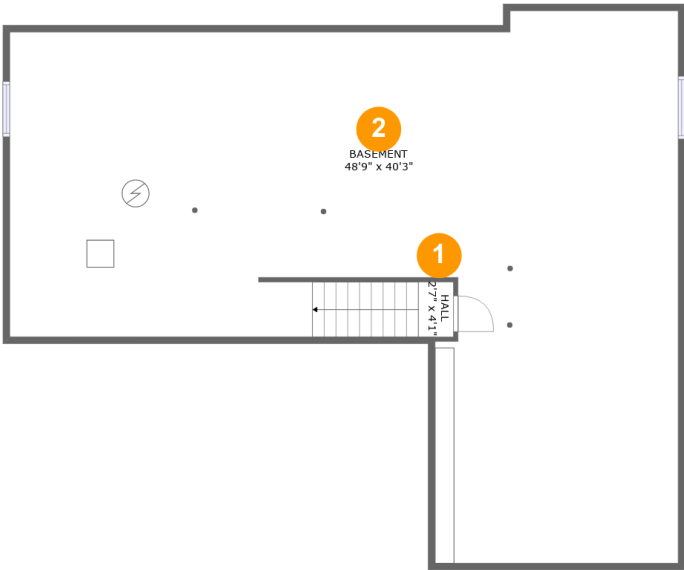
1
Half baths



1
Garages

Home report

115 Piper Glen Avenue, Oswego, Kendall County, Illinois, United States, 60543



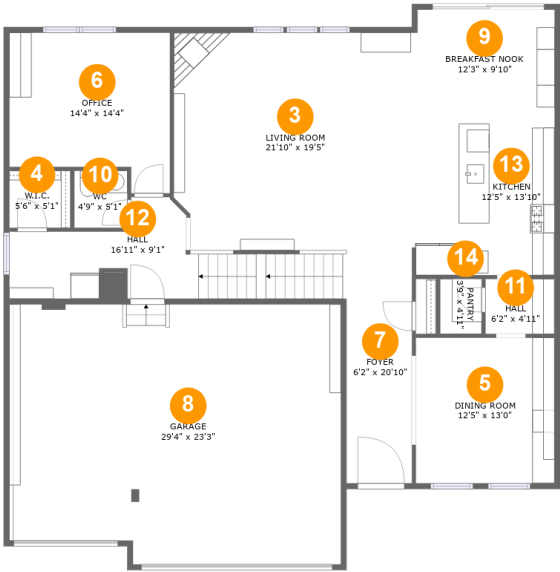
Room dimensions

Floor 1 Below ground Total:1396sqft Excluded: 0sqft

#		Max Dimensions	sqft	Included
1	Hall	2'7" x 4'1"	10 sq. ft	Yes
2	Basement	48'9" x 40'3"	1384 sq. ft	Yes

Home report

115 Piper Glen Avenue, Oswego, Kendall County, Illinois, United States, 60543



Room dimensions

Floor 2

Total:1488sqft

Excluded: 666sqft

#		Max Dimensions	sqft	Included
3	Living Room	21'10" x 19'5"	417 sq. ft	Yes
4	W.I.C.	5'6" x 5'1"	28 sq. ft	Yes
5	Dining Room	12'5" x 13'0"	162 sq. ft	Yes
6	Office	14'4" x 14'4"	181 sq. ft	Yes
7	Foyer	6'2" x 20'10"	175 sq. ft	Yes
8	Garage	29'4" x 23'3"	666 sq. ft	No
9	Breakfast Nook	12'3" x 9'10"	121 sq. ft	Yes
10	WC	4'9" x 5'1"	24 sq. ft	Yes
11	Hall	6'2" x 4'11"	30 sq. ft	Yes
12	Hall	16'11" x 9'1"	111 sq. ft	Yes
13	Kitchen	12'5" x 13'10"	172 sq. ft	Yes

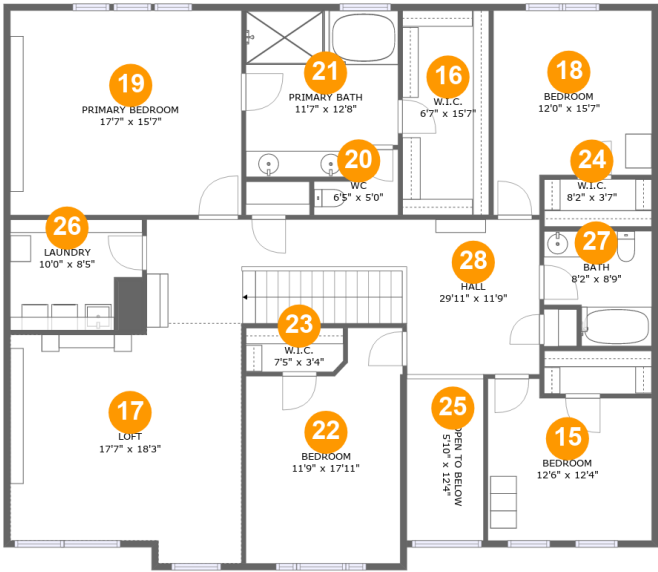
Home report

115 Piper Glen Avenue, Oswego, Kendall County, Illinois, United States, 60543

#		Max Dimensions	sqft	Included
14	Pantry	3'9" x 4'11"	18 sq. ft	Yes

Home report

115 Piper Glen Avenue, Oswego, Kendall County, Illinois, United States, 60543



Room dimensions

Floor 3

Total:1918sqft

Excluded: 74sqft

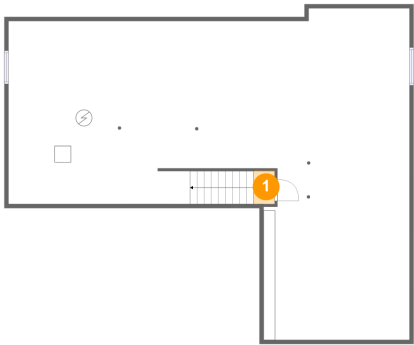
#		Max Dimensions	sqft	Included
15	Bedroom	12'6" x 12'4"	141 sq. ft	Yes
16	W.I.C.	6'7" x 15'7"	102 sq. ft	Yes
17	Loft	17'7" x 18'3"	292 sq. ft	Yes
18	Bedroom	12'0" x 15'7"	161 sq. ft	Yes
19	Primary Bedroom	17'7" x 15'7"	273 sq. ft	Yes
20	WC	6'5" x 5'0"	24 sq. ft	Yes
21	Primary Bath	11'7" x 12'8"	138 sq. ft	Yes
22	Bedroom	11'9" x 17'11"	184 sq. ft	Yes
23	W.I.C.	7'5" x 3'4"	24 sq. ft	Yes
24	W.I.C.	8'2" x 3'7"	30 sq. ft	Yes
25	Open To Below	5'10" x 12'4"	74 sq. ft	No

Home report

115 Piper Glen Avenue, Oswego, Kendall County, Illinois, United States, 60543

#		Max Dimensions	sqft	Included
26	Laundry	10'0" x 8'5"	76 sq. ft	Yes
27	Bath	8'2" x 8'9"	63 sq. ft	Yes
28	Hall	29'11" x 11'9"	270 sq. ft	Yes

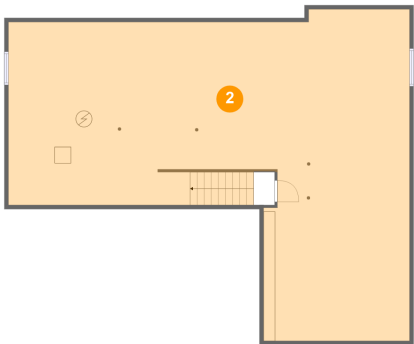
1 Floor 1 - Hall



Max Dimensions: 2'7" x 4'1"
Calculated Area: 10 sq. ft
Included: Yes

Heated: Yes
Finished: Yes
Enclosed: Yes
Contiguous: Yes
Permitted: Yes
Wet space: No
Addition: No
Conversion: No

2 Floor 1 - Basement



Max Dimensions: 48'9" x 40'3"
Calculated Area: 1384 sq. ft
Included: Yes

Heated: Yes
Finished: Yes
Enclosed: Yes
Contiguous: Yes
Permitted: Yes
Wet space: No
Addition: No
Conversion: No

115 Piper Glen Avenue, Oswego, Kendall County, Illinois, United States, 60543

3 Floor 2 - Living Room



Max Dimensions: 21'10" x 19'5"
Calculated Area: 417 sq. ft
Included: Yes

Heated: Yes
Finished: Yes
Enclosed: Yes
Contiguous: Yes
Permitted: Yes
Wet space: No
Addition: No
Conversion: No

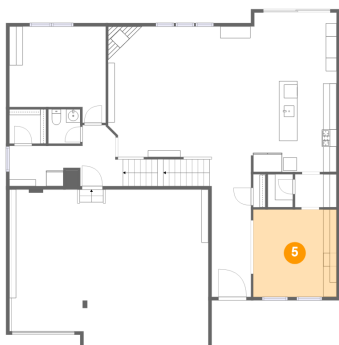
4 Floor 2 - W.I.C.



Max Dimensions: 5'6" x 5'1"
Calculated Area: 28 sq. ft
Included: Yes

Heated: Yes
Finished: Yes
Enclosed: Yes
Contiguous: Yes
Permitted: Yes
Wet space: No
Addition: No
Conversion: No

5 Floor 2 - Dining Room



Max Dimensions: 12'5" x 13'0"
Calculated Area: 162 sq. ft
Included: Yes

Heated: Yes
Finished: Yes
Enclosed: Yes
Contiguous: Yes
Permitted: Yes
Wet space: No
Addition: No
Conversion: No

6 Floor 2 - Office



Max Dimensions: 14'4" x 14'4"
Calculated Area: 181 sq. ft
Included: Yes

Heated: Yes
Finished: Yes
Enclosed: Yes
Contiguous: Yes
Permitted: Yes
Wet space: No
Addition: No
Conversion: No

7 Floor 2 - Foyer



Max Dimensions: 6'2" x 20'10"
Calculated Area: 175 sq. ft
Included: Yes

Heated: Yes
Finished: Yes
Enclosed: Yes
Contiguous: Yes
Permitted: Yes
Wet space: No
Addition: No
Conversion: No

8 Floor 2 - Garage



Max Dimensions: 29'4" x 23'3"
Calculated Area: 666 sq. ft
Included: No

Heated: No
Finished: No
Enclosed: No
Contiguous: Yes
Permitted: Yes
Wet space: No
Addition: No
Conversion: No

9 Floor 2 - Breakfast Nook



Max Dimensions: 12'3" x 9'10"
Calculated Area: 121 sq. ft
Included: Yes

Heated: Yes
Finished: Yes
Enclosed: Yes
Contiguous: Yes
Permitted: Yes
Wet space: No
Addition: No
Conversion: No

10 Floor 2 - WC



Max Dimensions: 4'9" x 5'1"
Calculated Area: 24 sq. ft
Included: Yes

Heated: Yes
Finished: Yes
Enclosed: Yes
Contiguous: Yes
Permitted: Yes
Wet space: Yes
Addition: No
Conversion: No

11 Floor 2 - Hall

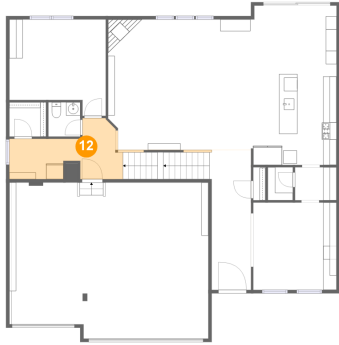


Max Dimensions: 6'2" x 4'11"
Calculated Area: 30 sq. ft
Included: Yes

Heated: Yes
Finished: Yes
Enclosed: Yes
Contiguous: Yes
Permitted: Yes
Wet space: No
Addition: No
Conversion: No

115 Piper Glen Avenue, Oswego, Kendall County, Illinois, United States, 60543

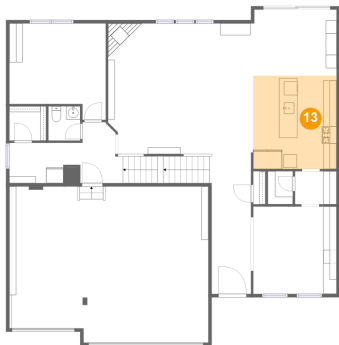
12 Floor 2 - Hall



Max Dimensions: 16'11" x 9'1"
Calculated Area: 111 sq. ft
Included: Yes

Heated: Yes
Finished: Yes
Enclosed: Yes
Contiguous: Yes
Permitted: Yes
Wet space: No
Addition: No
Conversion: No

13 Floor 2 - Kitchen



Max Dimensions: 12'5" x 13'10"
Calculated Area: 172 sq. ft
Included: Yes

Heated: Yes
Finished: Yes
Enclosed: Yes
Contiguous: Yes
Permitted: Yes
Wet space: No
Addition: No
Conversion: No

14 Floor 2 - Pantry



Max Dimensions: 3'9" x 4'11"
Calculated Area: 18 sq. ft
Included: Yes

Heated: Yes
Finished: Yes
Enclosed: Yes
Contiguous: Yes
Permitted: Yes
Wet space: No
Addition: No
Conversion: No

Home report

115 Piper Glen Avenue, Oswego, Kendall County, Illinois, United States, 60543

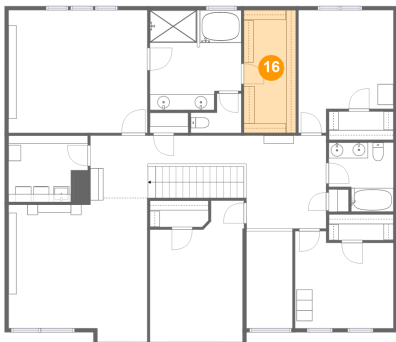
15 Floor 3 - Bedroom



Max Dimensions: 12'6" x 12'4"
Calculated Area: 141 sq. ft
Included: Yes

Heated: Yes
Finished: Yes
Enclosed: Yes
Contiguous: Yes
Permitted: Yes
Wet space: No
Addition: No
Conversion: No

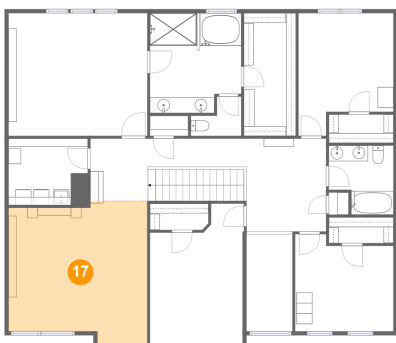
16 Floor 3 - W.I.C.



Max Dimensions: 6'7" x 15'7"
Calculated Area: 102 sq. ft
Included: Yes

Heated: Yes
Finished: Yes
Enclosed: Yes
Contiguous: Yes
Permitted: Yes
Wet space: No
Addition: No
Conversion: No

17 Floor 3 - Loft



Max Dimensions: 17'7" x 18'3"
Calculated Area: 292 sq. ft
Included: Yes

Heated: Yes
Finished: Yes
Enclosed: Yes
Contiguous: Yes
Permitted: Yes
Wet space: No
Addition: No
Conversion: No

115 Piper Glen Avenue, Oswego, Kendall County, Illinois, United States, 60543

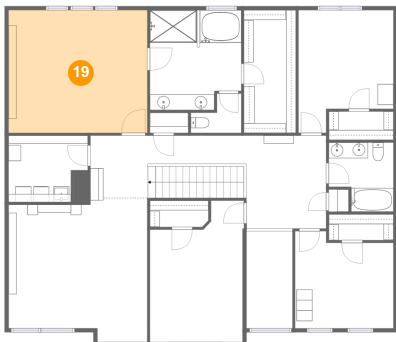
18 Floor 3 - Bedroom



Max Dimensions: 12'0" x 15'7"
Calculated Area: 161 sq. ft
Included: Yes

Heated: Yes
Finished: Yes
Enclosed: Yes
Contiguous: Yes
Permitted: Yes
Wet space: No
Addition: No
Conversion: No

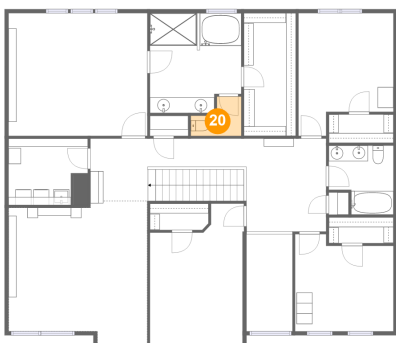
19 Floor 3 - Primary Bedroom



Max Dimensions: 17'7" x 15'7"
Calculated Area: 273 sq. ft
Included: Yes

Heated: Yes
Finished: Yes
Enclosed: Yes
Contiguous: Yes
Permitted: Yes
Wet space: No
Addition: No
Conversion: No

20 Floor 3 - WC



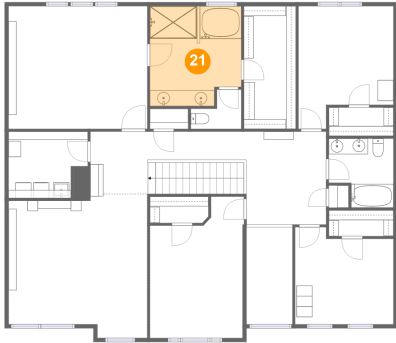
Max Dimensions: 6'5" x 5'0"
Calculated Area: 24 sq. ft
Included: Yes

Heated: Yes
Finished: Yes
Enclosed: Yes
Contiguous: Yes
Permitted: Yes
Wet space: No
Addition: No
Conversion: No

Home report

115 Piper Glen Avenue, Oswego, Kendall County, Illinois, United States, 60543

21 Floor 3 - Primary Bath



Max Dimensions: 11'7" x 12'8"
Calculated Area: 138 sq. ft
Included: Yes

Heated: Yes
Finished: Yes
Enclosed: Yes
Contiguous: Yes
Permitted: Yes
Wet space: Yes
Addition: No
Conversion: No

22 Floor 3 - Bedroom



Max Dimensions: 11'9" x 17'11"
Calculated Area: 184 sq. ft
Included: Yes

Heated: Yes
Finished: Yes
Enclosed: Yes
Contiguous: Yes
Permitted: Yes
Wet space: No
Addition: No
Conversion: No

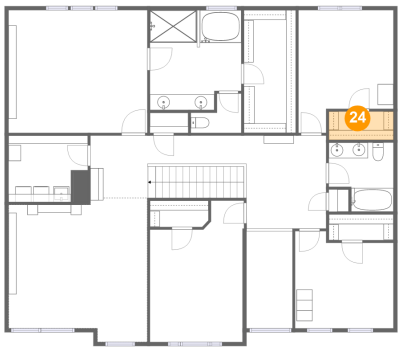
23 Floor 3 - W.I.C.



Max Dimensions: 7'5" x 3'4"
Calculated Area: 24 sq. ft
Included: Yes

Heated: Yes
Finished: Yes
Enclosed: Yes
Contiguous: Yes
Permitted: Yes
Wet space: No
Addition: No
Conversion: No

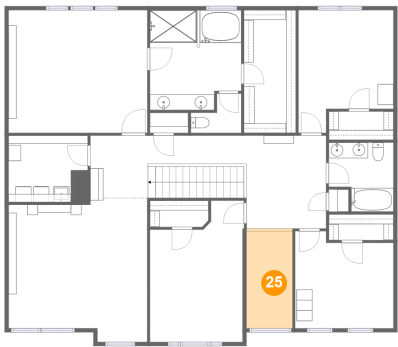
24 Floor 3 - W.I.C.



Max Dimensions: 8'2" x 3'7"
Calculated Area: 30 sq. ft
Included: Yes

Heated: Yes
Finished: Yes
Enclosed: Yes
Contiguous: Yes
Permitted: Yes
Wet space: No
Addition: No
Conversion: No

25 Floor 3 - Open To Below



Max Dimensions: 5'10" x 12'4"
Calculated Area: 74 sq. ft
Included: No

Heated: No
Finished: No
Enclosed: No
Contiguous: Yes
Permitted: No
Wet space: No
Addition: No
Conversion: No

26 Floor 3 - Laundry



Max Dimensions: 10'0" x 8'5"
Calculated Area: 76 sq. ft
Included: Yes

Heated: Yes
Finished: Yes
Enclosed: Yes
Contiguous: Yes
Permitted: Yes
Wet space: No
Addition: No
Conversion: No

115 Piper Glen Avenue, Oswego, Kendall County, Illinois, United States, 60543

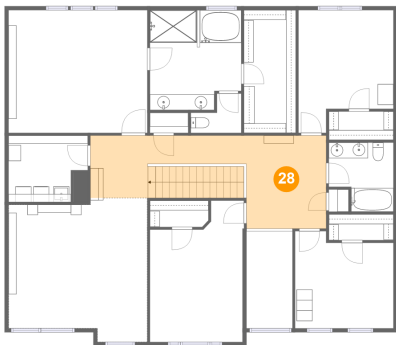
27 Floor 3 - Bath



Max Dimensions: 8'2" x 8'9"
Calculated Area: 63 sq. ft
Included: Yes

Heated: Yes
Finished: Yes
Enclosed: Yes
Contiguous: Yes
Permitted: Yes
Wet space: Yes
Addition: No
Conversion: No

28 Floor 3 - Hall



Max Dimensions: 29'11" x 11'9"
Calculated Area: 270 sq. ft
Included: Yes

Heated: Yes
Finished: Yes
Enclosed: Yes
Contiguous: Yes
Permitted: Yes
Wet space: No
Addition: No
Conversion: No