

Home report

80134 Countryside RD,Joseph,OR,US




**Total Area: 2460 sq. ft**

Floor 1: 2460 sq. ft


Excluded: Garage 540 sq. ft, Outdoor Deck 462 sq. ft, Walls: 137 sq. ft

Property summary

 **1** Floors

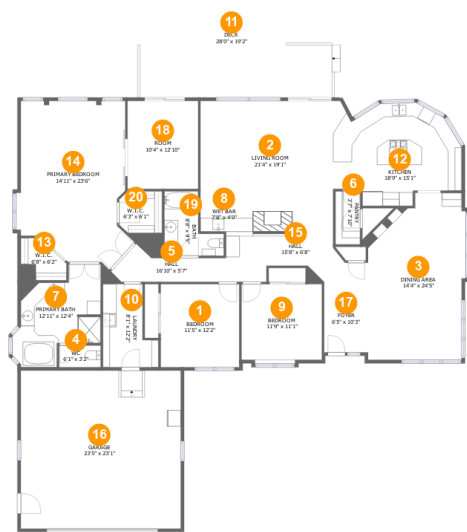
 **3** Bedrooms

 **2** Bathrooms

 **1** Garages

Home report

80134 Countryside RD,Joseph,OR,US



Room dimensions

Floor 1 Total:2460sqft Excluded: 1002sqft

#		Max Dimensions	sqft	Included
1	Bedroom	11'5" x 12'2"	139 sq. ft	Yes
2	Living Room	21'4" x 19'1"	345 sq. ft	Yes
3	Dining Area	14'4" x 24'5"	316 sq. ft	Yes
4	WC	6'1" x 3'2"	19 sq. ft	Yes
5	Hall	16'10" x 5'7"	60 sq. ft	Yes
6	Pantry	3'7" x 7'10"	28 sq. ft	Yes
7	Primary Bath	12'11" x 12'4"	138 sq. ft	Yes
8	Wet Bar	7'8" x 4'0"	31 sq. ft	Yes
9	Bedroom	11'9" x 11'1"	134 sq. ft	Yes
10	Laundry	8'1" x 12'2"	83 sq. ft	Yes
11	Deck	28'0" x 19'2"	462 sq. ft	No

## Home report

# 80134 Countryside RD,Joseph,OR,US

#		Max Dimensions	sqft	Included
12	Kitchen	18'9" x 15'1"	227 sq. ft	Yes
13	W.I.C.	6'8" x 6'2"	34 sq. ft	Yes
14	Primary Bedroom	14'11" x 23'6"	340 sq. ft	Yes
15	Hall	15'8" x 6'8"	117 sq. ft	Yes
16	Garage	23'5" x 23'1"	540 sq. ft	No
17	Foyer	6'5" x 10'3"	66 sq. ft	Yes
18	Room	10'4" x 12'10"	133 sq. ft	Yes
19	Bath	8'8" x 9'5"	59 sq. ft	Yes
20	W.I.C.	6'3" x 6'1"	37 sq. ft	Yes

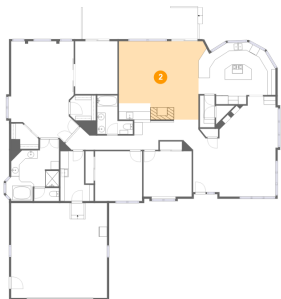
1 Floor 1 - Bedroom



Max Dimensions: 11'5" x 12'2"  
Calculated Area: 139 sq. ft  
Included: Yes

Heated: Yes  
Finished: Yes  
Enclosed: Yes  
Contiguous: Yes  
Permitted: Yes  
Wet space: No  
Addition: No  
Conversion: No

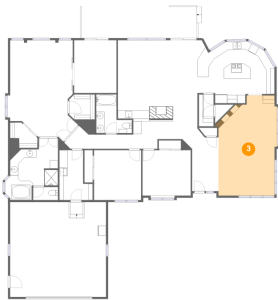
2 Floor 1 - Living Room



Max Dimensions: 21'4" x 19'1"  
Calculated Area: 345 sq. ft  
Included: Yes

Heated: Yes  
Finished: Yes  
Enclosed: Yes  
Contiguous: Yes  
Permitted: Yes  
Wet space: No  
Addition: No  
Conversion: No

3 Floor 1 - Dining Area



Max Dimensions: 14'4" x 24'5"  
Calculated Area: 316 sq. ft  
Included: Yes

Heated: Yes  
Finished: Yes  
Enclosed: Yes  
Contiguous: Yes  
Permitted: Yes  
Wet space: No  
Addition: No  
Conversion: No

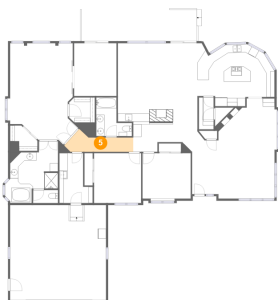
4 Floor 1 - WC



Max Dimensions: 6'1" x 3'2"  
Calculated Area: 19 sq. ft  
Included: Yes

Heated: Yes  
Finished: Yes  
Enclosed: Yes  
Contiguous: Yes  
Permitted: Yes  
Wet space: No  
Addition: No  
Conversion: No

5 Floor 1 - Hall



Max Dimensions: 16'10" x 5'7"  
Calculated Area: 60 sq. ft  
Included: Yes

Heated: Yes  
Finished: Yes  
Enclosed: Yes  
Contiguous: Yes  
Permitted: Yes  
Wet space: No  
Addition: No  
Conversion: No

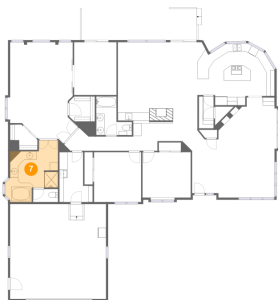
## 6 Floor 1 - Pantry



Max Dimensions: 3'7" x 7'10"  
Calculated Area: 28 sq. ft  
Included: Yes

Heated: Yes  
Finished: Yes  
Enclosed: Yes  
Contiguous: Yes  
Permitted: Yes  
Wet space: No  
Addition: No  
Conversion: No

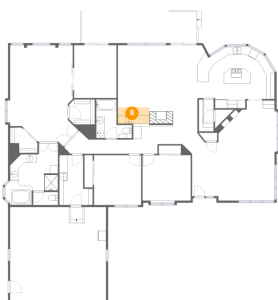
## 7 Floor 1 - Primary Bath



Max Dimensions: 12'11" x 12'4"  
Calculated Area: 138 sq. ft  
Included: Yes

Heated: Yes  
Finished: Yes  
Enclosed: Yes  
Contiguous: Yes  
Permitted: Yes  
Wet space: Yes  
Addition: No  
Conversion: No

## 8 Floor 1 - Wet Bar



Max Dimensions: 7'8" x 4'0"  
Calculated Area: 31 sq. ft  
Included: Yes

Heated: Yes  
Finished: Yes  
Enclosed: Yes  
Contiguous: Yes  
Permitted: Yes  
Wet space: No  
Addition: No  
Conversion: No

9 Floor 1 - Bedroom



Max Dimensions: 11'9" x 11'1"  
Calculated Area: 134 sq. ft  
Included: Yes

Heated: Yes  
Finished: Yes  
Enclosed: Yes  
Contiguous: Yes  
Permitted: Yes  
Wet space: No  
Addition: No  
Conversion: No

10 Floor 1 - Laundry



Max Dimensions: 8'1" x 12'2"  
Calculated Area: 83 sq. ft  
Included: Yes

Heated: Yes  
Finished: Yes  
Enclosed: Yes  
Contiguous: Yes  
Permitted: Yes  
Wet space: No  
Addition: No  
Conversion: No

11 Floor 1 - Deck



Max Dimensions: 28'0" x 19'2"  
Calculated Area: 462 sq. ft  
Included: No

Heated: No  
Finished: Yes  
Enclosed: No  
Contiguous: Yes  
Permitted: Yes  
Wet space: No  
Addition: No  
Conversion: No

12 Floor 1 - Kitchen



Max Dimensions: 18'9" x 15'1"  
Calculated Area: 227 sq. ft  
Included: Yes

Heated: Yes  
Finished: Yes  
Enclosed: Yes  
Contiguous: Yes  
Permitted: Yes  
Wet space: No  
Addition: No  
Conversion: No

13 Floor 1 - W.I.C.



Max Dimensions: 6'8" x 6'2"  
Calculated Area: 34 sq. ft  
Included: Yes

Heated: Yes  
Finished: Yes  
Enclosed: Yes  
Contiguous: Yes  
Permitted: Yes  
Wet space: No  
Addition: No  
Conversion: No

14 Floor 1 - Primary Bedroom



Max Dimensions: 14'11" x 23'6"  
Calculated Area: 340 sq. ft  
Included: Yes

Heated: Yes  
Finished: Yes  
Enclosed: Yes  
Contiguous: Yes  
Permitted: Yes  
Wet space: No  
Addition: No  
Conversion: No



15 Floor 1 - Hall



Max Dimensions: 15'8" x 6'8"  
Calculated Area: 117 sq. ft  
Included: Yes

Heated: Yes  
Finished: Yes  
Enclosed: Yes  
Contiguous: Yes  
Permitted: Yes  
Wet space: No  
Addition: No  
Conversion: No

16 Floor 1 - Garage



Max Dimensions: 23'5" x 23'1"  
Calculated Area: 540 sq. ft  
Included: No

Heated: No  
Finished: No  
Enclosed: Yes  
Contiguous: Yes  
Permitted: Yes  
Wet space: No  
Addition: No  
Conversion: No

17 Floor 1 - Foyer



Max Dimensions: 6'5" x 10'3"  
Calculated Area: 66 sq. ft  
Included: Yes

Heated: Yes  
Finished: Yes  
Enclosed: Yes  
Contiguous: Yes  
Permitted: Yes  
Wet space: No  
Addition: No  
Conversion: No

18 Floor 1 - Room



Max Dimensions: 10'4" x 12'10"  
Calculated Area: 133 sq. ft  
Included: Yes

Heated: Yes  
Finished: Yes  
Enclosed: Yes  
Contiguous: Yes  
Permitted: Yes  
Wet space: No  
Addition: No  
Conversion: No

19 Floor 1 - Bath



Max Dimensions: 8'8" x 9'5"  
Calculated Area: 59 sq. ft  
Included: Yes

Heated: Yes  
Finished: Yes  
Enclosed: Yes  
Contiguous: Yes  
Permitted: Yes  
Wet space: Yes  
Addition: No  
Conversion: No

20 Floor 1 - W.I.C.



Max Dimensions: 6'3" x 6'1"  
Calculated Area: 37 sq. ft  
Included: Yes

Heated: Yes  
Finished: Yes  
Enclosed: Yes  
Contiguous: Yes  
Permitted: Yes  
Wet space: No  
Addition: No  
Conversion: No