

Home report

2201 Hunters Road Southwest, Raleigh Court, Roanoke,  
Roanoke city, Virginia, United States, 24015



Total Area: 2340 sq. ft

Below Ground: 259 sq. ft, Floor 2: 1246 sq. ft, Floor 3: 835 sq. ft  
Excluded: Storage 129 sq. ft, Utility 240 sq. ft, Fireplace 19 sq. ft, Garage 292 sq. ft, Sunroom 95 sq. ft, Porch 160 sq. ft, Cedar closet 33 sq. ft, Low ceiling 264 sq. ft, Attic 131 sq. ft, Walls: 245 sq. ft

Property summary

 **3** Floors

 **5** Bedrooms

 **3** Bathrooms

Home report

**2201 Hunters Road Southwest, Raleigh Court, Roanoke,  
Roanoke city, Virginia, United States, 24015**

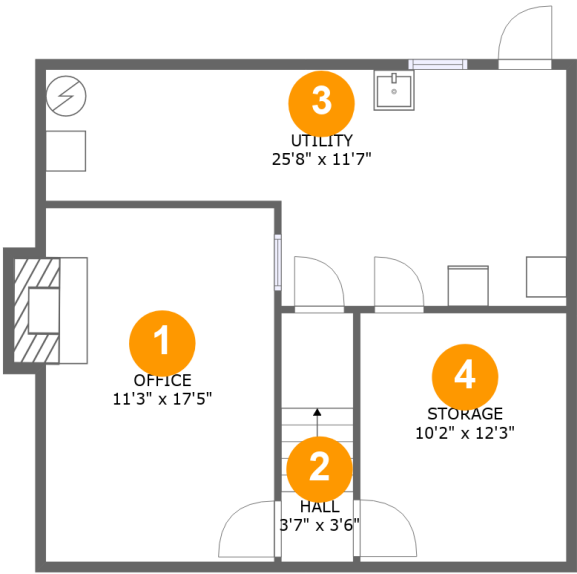


**1**  
Half baths



**1**  
Garages

2201 Hunters Road Southwest, Raleigh Court, Roanoke,  
Roanoke city, Virginia, United States, 24015



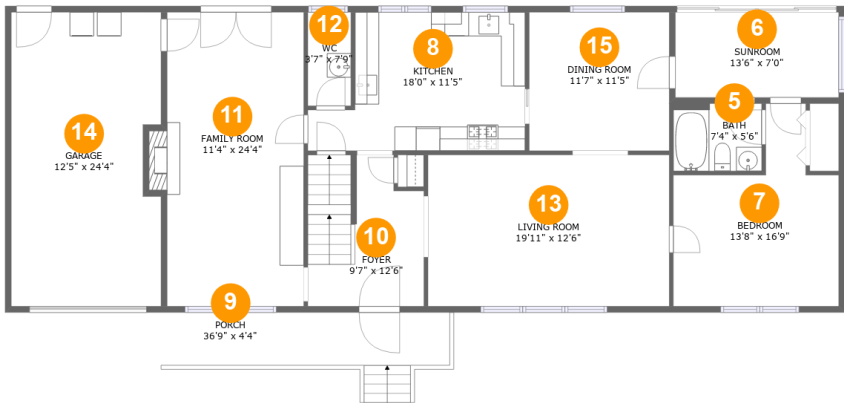
Room dimensions

Floor 1 Below ground Total:259sqft    Excluded: 379sqft

#		Max Dimensions	sqft	Included
1	Office	11'3" x 17'5"	206 sq. ft	Yes
2	Hall	3'7" x 3'6"	44 sq. ft	Yes
3	Utility	25'8" x 11'7"	240 sq. ft	No
4	Storage	10'2" x 12'3"	125 sq. ft	No

Home report

2201 Hunters Road Southwest, Raleigh Court, Roanoke,  
Roanoke city, Virginia, United States, 24015



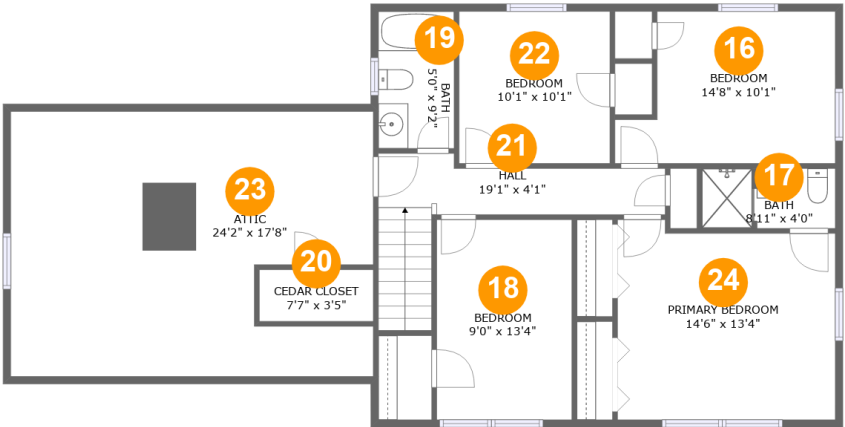
Room dimensions

Floor 2 Total:1246sqft   Excluded: 556sqft

#		Max Dimensions	sqft	Included
5	Bath	7'4" x 5'6"	41 sq. ft	Yes
6	Sunroom	13'6" x 7'0"	95 sq. ft	No
7	Bedroom	13'8" x 16'9"	168 sq. ft	Yes
8	Kitchen	18'0" x 11'5"	174 sq. ft	Yes
9	Porch	36'9" x 4'4"	160 sq. ft	No
10	Foyer	9'7" x 12'6"	111 sq. ft	Yes
11	Family Room	11'4" x 24'4"	282 sq. ft	Yes
12	WC	3'7" x 7'9"	28 sq. ft	Yes
13	Living Room	19'11" x 12'6"	250 sq. ft	Yes
14	Garage	12'5" x 24'4"	292 sq. ft	No
15	Dining Room	11'7" x 11'5"	133 sq. ft	Yes

Home report

2201 Hunters Road Southwest, Raleigh Court, Roanoke,  
Roanoke city, Virginia, United States, 24015



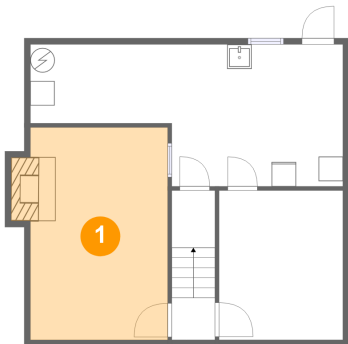
Room dimensions

Floor 3 Total:835sqft    Excluded: 428sqft

#		Max Dimensions	sqft	Included
16	Bedroom	14'8" x 10'1"	129 sq. ft	Yes
17	Bath	8'11" x 4'0"	35 sq. ft	Yes
18	Bedroom	9'0" x 13'4"	120 sq. ft	Yes
19	Bath	5'0" x 9'2"	46 sq. ft	Yes
20	Cedar Closet	7'7" x 3'5"	26 sq. ft	No
21	Hall	19'1" x 4'1"	92 sq. ft	Yes
22	Bedroom	10'1" x 10'1"	102 sq. ft	Yes
23	Attic	24'2" x 17'8"	131 sq. ft	No
24	Primary Bedroom	14'6" x 13'4"	183 sq. ft	Yes

2201 Hunters Road Southwest, Raleigh Court, Roanoke,  
Roanoke city, Virginia, United States, 24015

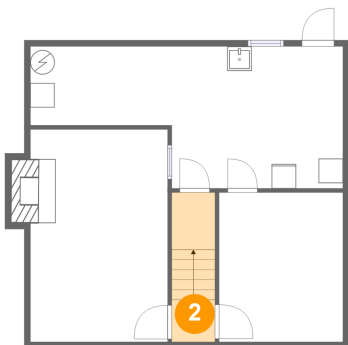
1 Floor 1 - Office



Max Dimensions: 11'3" x 17'5"  
Calculated Area: 206 sq. ft  
Included: Yes

Heated: Yes  
Finished: Yes  
Enclosed: Yes  
Contiguous: Yes  
Permitted: Yes  
Wet space: No  
Addition: No  
Conversion: No

2 Floor 1 - Hall

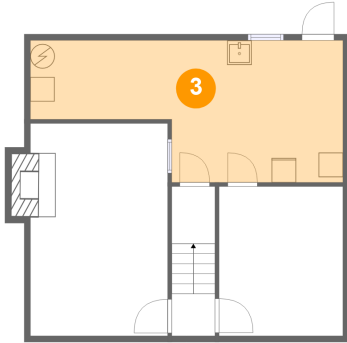


Max Dimensions: 3'7" x 3'6"  
Calculated Area: 44 sq. ft  
Included: Yes

Heated: Yes  
Finished: Yes  
Enclosed: Yes  
Contiguous: Yes  
Permitted: Yes  
Wet space: No  
Addition: No  
Conversion: No

2201 Hunters Road Southwest, Raleigh Court, Roanoke,  
Roanoke city, Virginia, United States, 24015

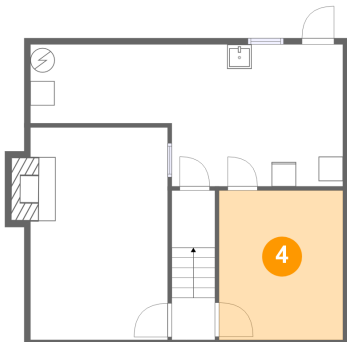
### 3 Floor 1 - Utility



Max Dimensions: 25'8" x 11'7"  
Calculated Area: 240 sq. ft  
Included: No

Heated: Yes  
Finished: No  
Enclosed: Yes  
Contiguous: Yes  
Permitted: Yes  
Wet space: No  
Addition: No  
Conversion: No

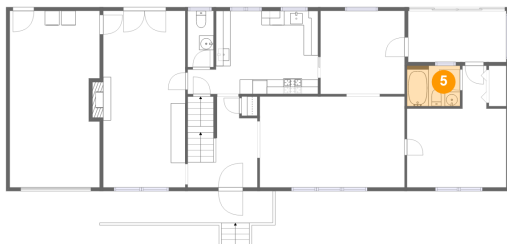
### 4 Floor 1 - Storage



Max Dimensions: 10'2" x 12'3"  
Calculated Area: 125 sq. ft  
Included: No

Heated: No  
Finished: No  
Enclosed: No  
Contiguous: Yes  
Permitted: Yes  
Wet space: No  
Addition: No  
Conversion: No

### 5 Floor 2 - Bath

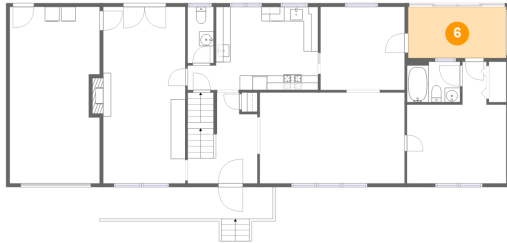


Max Dimensions: 7'4" x 5'6"  
Calculated Area: 41 sq. ft  
Included: Yes

Heated: Yes  
Finished: Yes  
Enclosed: Yes  
Contiguous: Yes  
Permitted: Yes  
Wet space: Yes  
Addition: No  
Conversion: No

2201 Hunters Road Southwest, Raleigh Court, Roanoke,  
Roanoke city, Virginia, United States, 24015

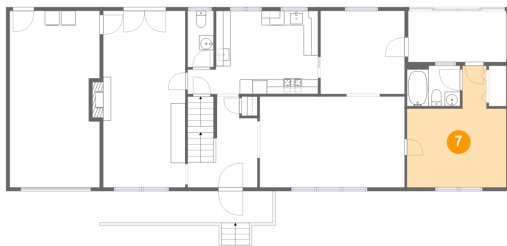
## 6 Floor 2 - Sunroom



Max Dimensions: 13'6" x 7'0"  
Calculated Area: 95 sq. ft  
Included: No

Heated: No  
Finished: No  
Enclosed: Yes  
Contiguous: Yes  
Permitted: Yes  
Wet space: No  
Addition: No  
Conversion: No

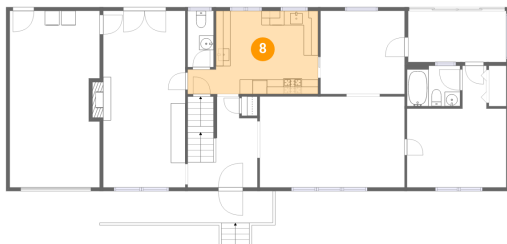
## 7 Floor 2 - Bedroom



Max Dimensions: 13'8" x 16'9"  
Calculated Area: 168 sq. ft  
Included: Yes

Heated: Yes  
Finished: Yes  
Enclosed: Yes  
Contiguous: Yes  
Permitted: Yes  
Wet space: No  
Addition: No  
Conversion: No

## 8 Floor 2 - Kitchen



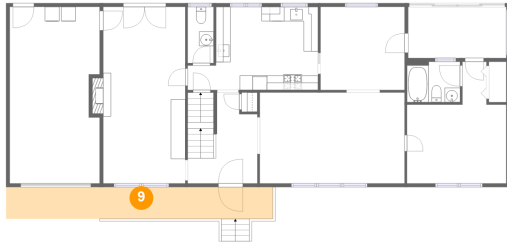
Max Dimensions: 18'0" x 11'5"  
Calculated Area: 174 sq. ft  
Included: Yes

Heated: Yes  
Finished: Yes  
Enclosed: Yes  
Contiguous: Yes  
Permitted: Yes  
Wet space: No  
Addition: No  
Conversion: No



2201 Hunters Road Southwest, Raleigh Court, Roanoke,  
Roanoke city, Virginia, United States, 24015

9 Floor 2 - Porch



Max Dimensions: 36'9" x 4'4"  
Calculated Area: 160 sq. ft  
Included: No

Heated: No  
Finished: Yes  
Enclosed: No  
Contiguous: Yes  
Permitted: Yes  
Wet space: No  
Addition: No  
Conversion: No

10 Floor 2 - Foyer



Max Dimensions: 9'7" x 12'6"  
Calculated Area: 111 sq. ft  
Included: Yes

Heated: Yes  
Finished: Yes  
Enclosed: Yes  
Contiguous: Yes  
Permitted: Yes  
Wet space: No  
Addition: No  
Conversion: No

11 Floor 2 - Family Room



Max Dimensions: 11'4" x 24'4"  
Calculated Area: 282 sq. ft  
Included: Yes

Heated: Yes  
Finished: Yes  
Enclosed: Yes  
Contiguous: Yes  
Permitted: Yes  
Wet space: No  
Addition: No  
Conversion: No

## Home report

2201 Hunters Road Southwest, Raleigh Court, Roanoke,  
Roanoke city, Virginia, United States, 24015

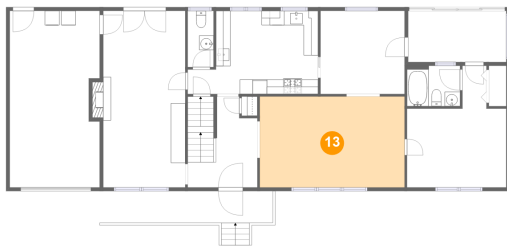
### 12 Floor 2 - WC



Max Dimensions: 3'7" x 7'9"  
Calculated Area: 28 sq. ft  
Included: Yes

Heated: Yes  
Finished: Yes  
Enclosed: Yes  
Contiguous: Yes  
Permitted: Yes  
Wet space: Yes  
Addition: No  
Conversion: No

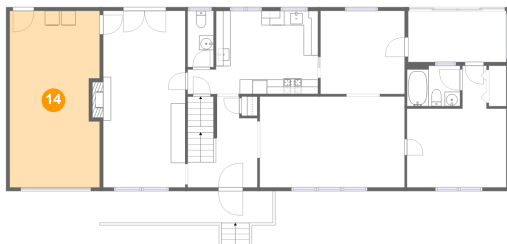
### 13 Floor 2 - Living Room



Max Dimensions: 19'11" x 12'6"  
Calculated Area: 250 sq. ft  
Included: Yes

Heated: Yes  
Finished: Yes  
Enclosed: Yes  
Contiguous: Yes  
Permitted: Yes  
Wet space: No  
Addition: No  
Conversion: No

### 14 Floor 2 - Garage



Max Dimensions: 12'5" x 24'4"  
Calculated Area: 292 sq. ft  
Included: No

Heated: No  
Finished: No  
Enclosed: Yes  
Contiguous: Yes  
Permitted: Yes  
Wet space: No  
Addition: No  
Conversion: No

2201 Hunters Road Southwest, Raleigh Court, Roanoke,  
Roanoke city, Virginia, United States, 24015

## 15 Floor 2 - Dining Room



Max Dimensions: 11'7" x 11'5"  
Calculated Area: 133 sq. ft  
Included: Yes

Heated: Yes  
Finished: Yes  
Enclosed: Yes  
Contiguous: Yes  
Permitted: Yes  
Wet space: No  
Addition: No  
Conversion: No

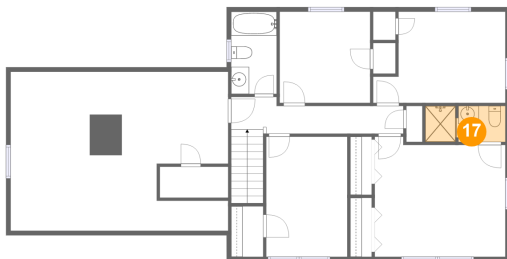
## 16 Floor 3 - Bedroom



Max Dimensions: 14'8" x 10'1"  
Calculated Area: 129 sq. ft  
Included: Yes

Heated: Yes  
Finished: Yes  
Enclosed: Yes  
Contiguous: Yes  
Permitted: Yes  
Wet space: No  
Addition: No  
Conversion: No

## 17 Floor 3 - Bath

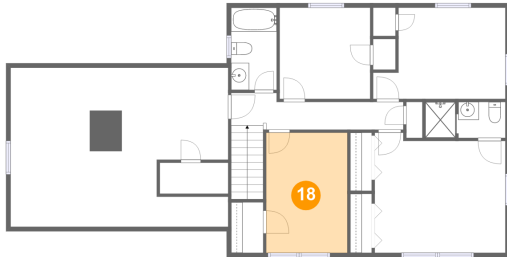


Max Dimensions: 8'11" x 4'0"  
Calculated Area: 35 sq. ft  
Included: Yes

Heated: Yes  
Finished: Yes  
Enclosed: Yes  
Contiguous: Yes  
Permitted: Yes  
Wet space: Yes  
Addition: No  
Conversion: No

2201 Hunters Road Southwest, Raleigh Court, Roanoke,  
Roanoke city, Virginia, United States, 24015

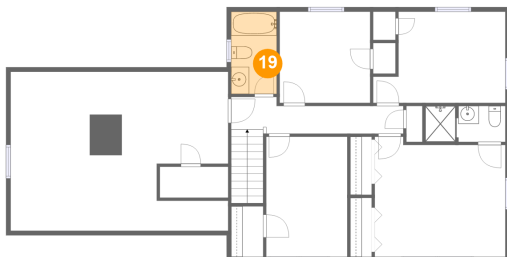
### 18 Floor 3 - Bedroom



Max Dimensions: 9'0" x 13'4"  
Calculated Area: 120 sq. ft  
Included: Yes

Heated: Yes  
Finished: Yes  
Enclosed: Yes  
Contiguous: Yes  
Permitted: Yes  
Wet space: No  
Addition: No  
Conversion: No

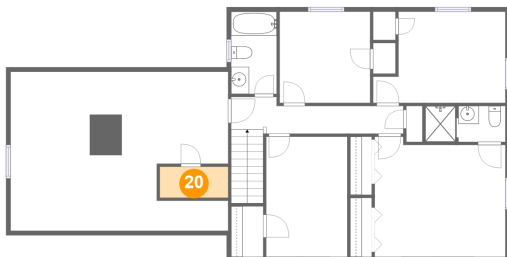
### 19 Floor 3 - Bath



Max Dimensions: 5'0" x 9'2"  
Calculated Area: 46 sq. ft  
Included: Yes

Heated: Yes  
Finished: Yes  
Enclosed: Yes  
Contiguous: Yes  
Permitted: Yes  
Wet space: Yes  
Addition: No  
Conversion: No

### 20 Floor 3 - Cedar Closet

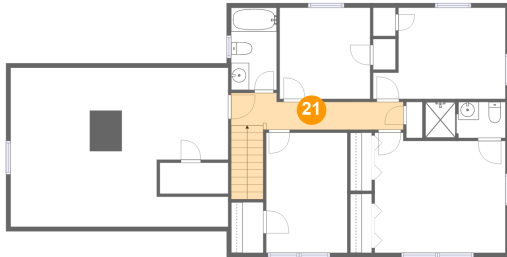


Max Dimensions: 7'7" x 3'5"  
Calculated Area: 26 sq. ft  
Included: No

Heated: No  
Finished: No  
Enclosed: No  
Contiguous: Yes  
Permitted: Yes  
Wet space: No  
Addition: No  
Conversion: No

2201 Hunters Road Southwest, Raleigh Court, Roanoke,  
Roanoke city, Virginia, United States, 24015

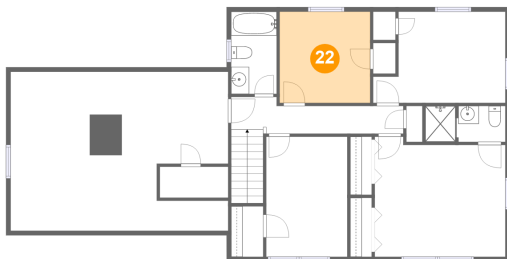
### 21 Floor 3 - Hall



Max Dimensions: 19'1" x 4'1"  
Calculated Area: 92 sq. ft  
Included: Yes

Heated: Yes  
Finished: Yes  
Enclosed: Yes  
Contiguous: Yes  
Permitted: Yes  
Wet space: No  
Addition: No  
Conversion: No

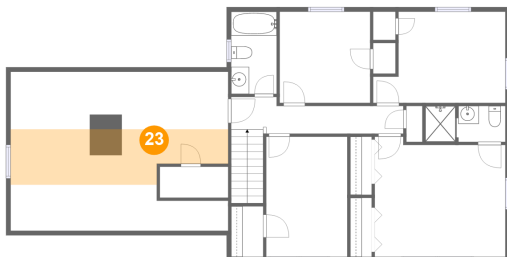
### 22 Floor 3 - Bedroom



Max Dimensions: 10'1" x 10'1"  
Calculated Area: 102 sq. ft  
Included: Yes

Heated: Yes  
Finished: Yes  
Enclosed: Yes  
Contiguous: Yes  
Permitted: Yes  
Wet space: No  
Addition: No  
Conversion: No

### 23 Floor 3 - Attic

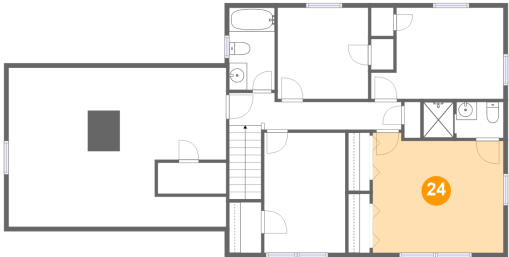


Max Dimensions: 24'2" x 17'8"  
Calculated Area: 131 sq. ft  
Included: No

Heated: No  
Finished: No  
Enclosed: Yes  
Contiguous: Yes  
Permitted: Yes  
Wet space: No  
Addition: No  
Conversion: No

2201 Hunters Road Southwest, Raleigh Court, Roanoke,  
Roanoke city, Virginia, United States, 24015

**24** Floor 3 - Primary Bedroom



Max Dimensions: 14'6" x 13'4"  
Calculated Area: 183 sq. ft  
Included: Yes

Heated: Yes  
Finished: Yes  
Enclosed: Yes  
Contiguous: Yes  
Permitted: Yes  
Wet space: No  
Addition: No  
Conversion: No