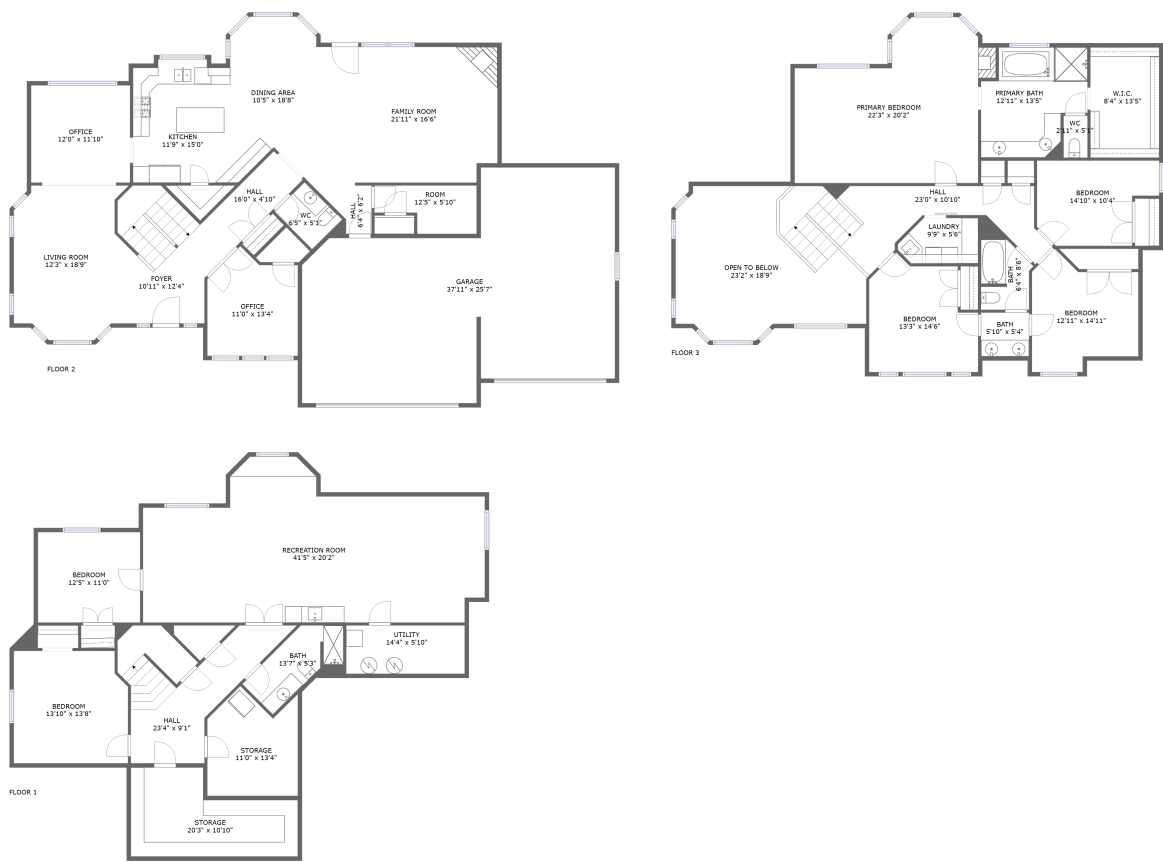


Home report

3371 Waterbridge Cove, Midas Creek, South Jordan, Salt Lake County, Utah, United States, 84095



**Total Area: 4822 sq. ft**  
Below Ground: 1414 sq. ft, Floor 2: 1758 sq. ft, Floor 3: 1650 sq. ft  
Excluded: Storage 330 sq. ft, Utility 95 sq. ft, Garage 887 sq. ft, Opentobelow 332 sq. ft

Property summary

 **3** Floors

 **6** Bedrooms

 **3** Bathrooms

Home report

**3371 Waterbridge Cove, Midas Creek, South Jordan, Salt Lake  
County, Utah, United States, 84095**



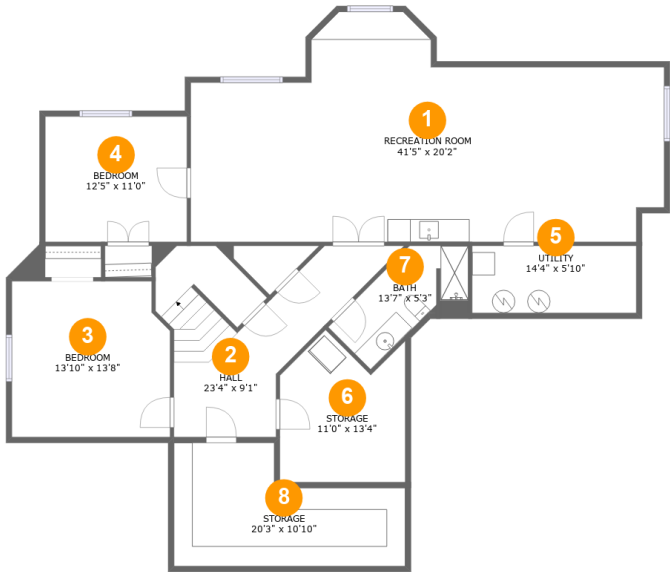
**1**  
Half baths



**1**  
Garages

Home report

3371 Waterbridge Cove, Midas Creek, South Jordan, Salt Lake County, Utah, United States, 84095



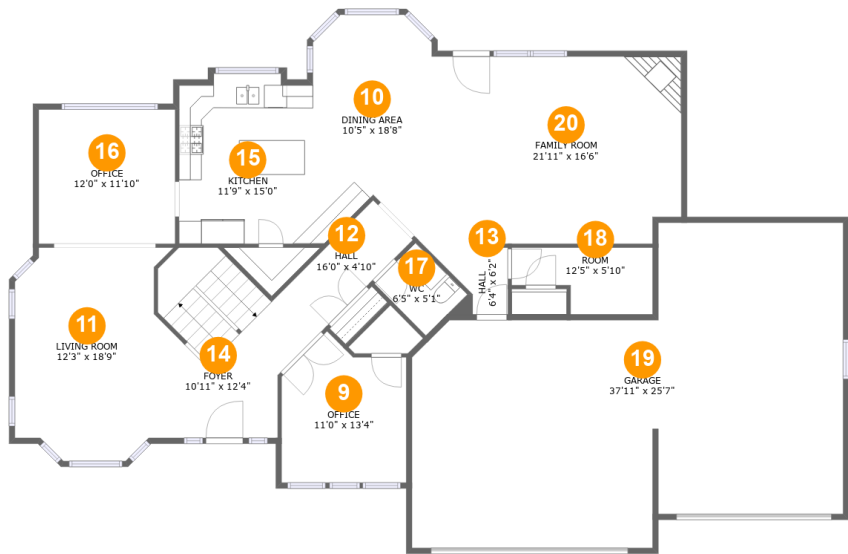
Room dimensions

Floor 1 Below ground Total:1414sqft    Excluded: 425sqft

#		Max Dimensions	sqft	Included
1	Recreation Room	41'5" x 20'2"	657 sq. ft	Yes
2	Hall	23'4" x 9'1"	195 sq. ft	Yes
3	Bedroom	13'10" x 13'8"	183 sq. ft	Yes
4	Bedroom	12'5" x 11'0"	136 sq. ft	Yes
5	Utility	14'4" x 5'10"	84 sq. ft	No
6	Storage	11'0" x 13'4"	123 sq. ft	No
7	Bath	13'7" x 5'3"	69 sq. ft	Yes
8	Storage	20'3" x 10'10"	174 sq. ft	No

Home report

3371 Waterbridge Cove, Midas Creek, South Jordan, Salt Lake County, Utah, United States, 84095



Room dimensions

Floor 2 Total:1758sqft Excluded: 887sqft

#		Max Dimensions	sqft	Included
9	Office	11'0" x 13'4"	125 sq. ft	Yes
10	Dining Area	10'5" x 18'8"	186 sq. ft	Yes
11	Living Room	12'3" x 18'9"	220 sq. ft	Yes
12	Hall	16'0" x 4'10"	71 sq. ft	Yes
13	Hall	6'4" x 6'2"	30 sq. ft	Yes
14	Foyer	10'11" x 12'4"	163 sq. ft	Yes
15	Kitchen	11'9" x 15'0"	170 sq. ft	Yes
16	Office	12'0" x 11'10"	142 sq. ft	Yes
17	WC	6'5" x 5'1"	33 sq. ft	Yes
18	Room	12'5" x 5'10"	60 sq. ft	Yes
19	Garage	37'11" x 25'7"	840 sq. ft	No

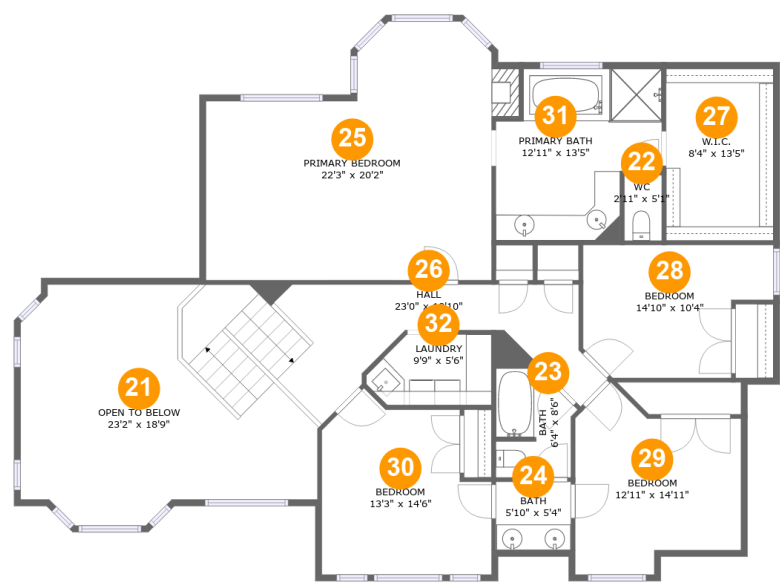
Home report

3371 Waterbridge Cove, Midas Creek, South Jordan, Salt Lake County, Utah, United States, 84095

#		Max Dimensions	sqft	Included
20	Family Room	21'11" x 16'6"	355 sq. ft	Yes

Home report

3371 Waterbridge Cove, Midas Creek, South Jordan, Salt Lake County, Utah, United States, 84095



Room dimensions

Floor 3

Total:1650sqft

Excluded: 332sqft

#		Max Dimensions	sqft	Included
21	Open To Below	23'2" x 18'9"	304 sq. ft	No
22	WC	2'11" x 5'1"	15 sq. ft	Yes
23	Bath	6'4" x 8'6"	50 sq. ft	Yes
24	Bath	5'10" x 5'4"	31 sq. ft	Yes
25	Primary Bedroom	22'3" x 20'2"	377 sq. ft	Yes
26	Hall	23'0" x 10'10"	214 sq. ft	Yes
27	W.I.C.	8'4" x 13'5"	112 sq. ft	Yes
28	Bedroom	14'10" x 10'4"	131 sq. ft	Yes
29	Bedroom	12'11" x 14'11"	152 sq. ft	Yes
30	Bedroom	13'3" x 14'6"	157 sq. ft	Yes
31	Primary Bath	12'11" x 13'5"	147 sq. ft	Yes

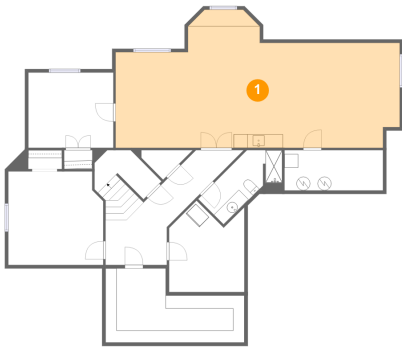
Home report

3371 Waterbridge Cove, Midas Creek, South Jordan, Salt Lake County, Utah, United States, 84095

#		Max Dimensions	sqft	Included
32	Laundry	9'9" x 5'6"	47 sq. ft	Yes

3371 Waterbridge Cove, Midas Creek, South Jordan, Salt Lake County, Utah, United States, 84095

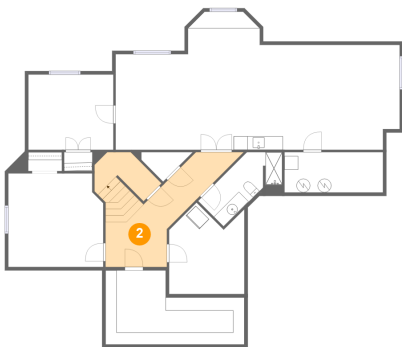
1 Floor 1 - Recreation Room



Max Dimensions: 41'5" x 20'2"  
Calculated Area: 657 sq. ft  
Included: Yes

Heated: Yes  
Finished: Yes  
Enclosed: Yes  
Contiguous: Yes  
Permitted: Yes  
Wet space: No  
Addition: No  
Conversion: No

2 Floor 1 - Hall

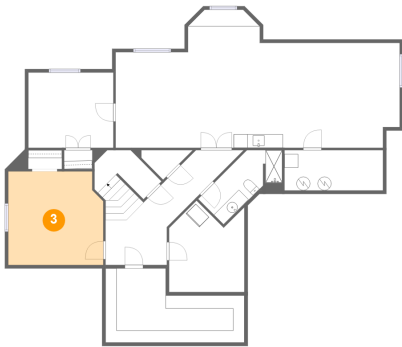


Max Dimensions: 23'4" x 9'1"  
Calculated Area: 195 sq. ft  
Included: Yes

Heated: Yes  
Finished: Yes  
Enclosed: Yes  
Contiguous: Yes  
Permitted: Yes  
Wet space: No  
Addition: No  
Conversion: No



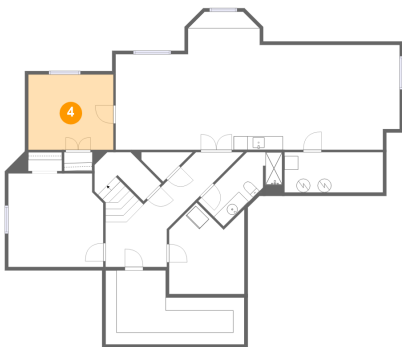
3 Floor 1 - Bedroom



Max Dimensions: 13'10" x 13'8"  
Calculated Area: 183 sq. ft  
Included: Yes

Heated: Yes  
Finished: Yes  
Enclosed: Yes  
Contiguous: Yes  
Permitted: Yes  
Wet space: No  
Addition: No  
Conversion: No

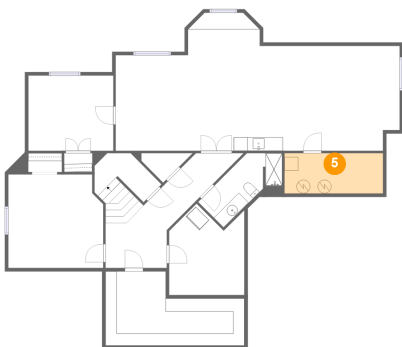
4 Floor 1 - Bedroom



Max Dimensions: 12'5" x 11'0"  
Calculated Area: 136 sq. ft  
Included: Yes

Heated: Yes  
Finished: Yes  
Enclosed: Yes  
Contiguous: Yes  
Permitted: Yes  
Wet space: No  
Addition: No  
Conversion: No

5 Floor 1 - Utility

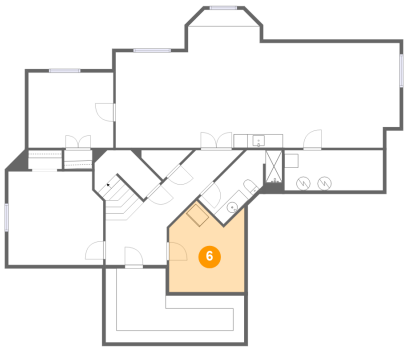


Max Dimensions: 14'4" x 5'10"  
Calculated Area: 84 sq. ft  
Included: No

Heated: Yes  
Finished: No  
Enclosed: Yes  
Contiguous: Yes  
Permitted: Yes  
Wet space: No  
Addition: No  
Conversion: No

3371 Waterbridge Cove, Midas Creek, South Jordan, Salt Lake County, Utah, United States, 84095

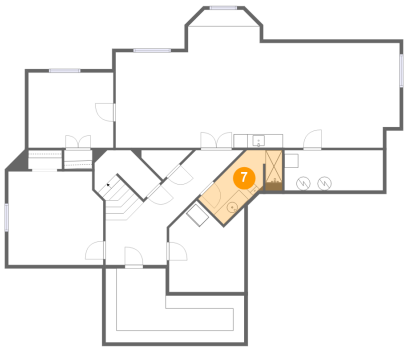
6 Floor 1 - Storage



Max Dimensions: 11'0" x 13'4"  
Calculated Area: 123 sq. ft  
Included: No

Heated: No  
Finished: No  
Enclosed: No  
Contiguous: Yes  
Permitted: Yes  
Wet space: No  
Addition: No  
Conversion: No

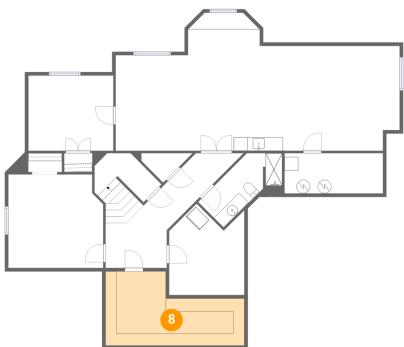
7 Floor 1 - Bath



Max Dimensions: 13'7" x 5'3"  
Calculated Area: 69 sq. ft  
Included: Yes

Heated: Yes  
Finished: Yes  
Enclosed: Yes  
Contiguous: Yes  
Permitted: Yes  
Wet space: Yes  
Addition: No  
Conversion: No

8 Floor 1 - Storage

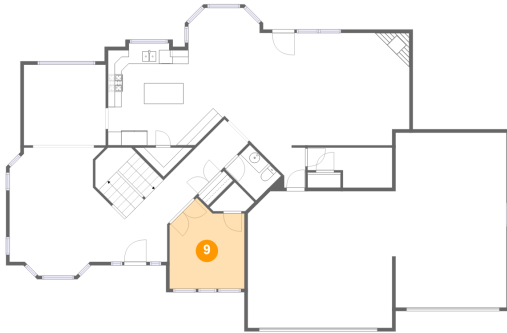


Max Dimensions: 20'3" x 10'10"  
Calculated Area: 174 sq. ft  
Included: No

Heated: No  
Finished: No  
Enclosed: No  
Contiguous: Yes  
Permitted: Yes  
Wet space: No  
Addition: No  
Conversion: No

3371 Waterbridge Cove, Midas Creek, South Jordan, Salt Lake County, Utah, United States, 84095

## 9 Floor 2 - Office



Max Dimensions: 11'0" x 13'4"  
Calculated Area: 125 sq. ft  
Included: Yes

Heated: Yes  
Finished: Yes  
Enclosed: Yes  
Contiguous: Yes  
Permitted: Yes  
Wet space: No  
Addition: No  
Conversion: No

## 10 Floor 2 - Dining Area



Max Dimensions: 10'5" x 18'8"  
Calculated Area: 186 sq. ft  
Included: Yes

Heated: Yes  
Finished: Yes  
Enclosed: Yes  
Contiguous: Yes  
Permitted: Yes  
Wet space: No  
Addition: No  
Conversion: No

## 11 Floor 2 - Living Room



Max Dimensions: 12'3" x 18'9"  
Calculated Area: 220 sq. ft  
Included: Yes

Heated: Yes  
Finished: Yes  
Enclosed: Yes  
Contiguous: Yes  
Permitted: Yes  
Wet space: No  
Addition: No  
Conversion: No

3371 Waterbridge Cove, Midas Creek, South Jordan, Salt Lake County, Utah, United States, 84095

## 12 Floor 2 - Hall



Max Dimensions: 16'0" x 4'10"  
Calculated Area: 71 sq. ft  
Included: Yes

Heated: Yes  
Finished: Yes  
Enclosed: Yes  
Contiguous: Yes  
Permitted: Yes  
Wet space: No  
Addition: No  
Conversion: No

## 13 Floor 2 - Hall



Max Dimensions: 6'4" x 6'2"  
Calculated Area: 30 sq. ft  
Included: Yes

Heated: Yes  
Finished: Yes  
Enclosed: Yes  
Contiguous: Yes  
Permitted: Yes  
Wet space: No  
Addition: No  
Conversion: No

## 14 Floor 2 - Foyer



Max Dimensions: 10'11" x 12'4"  
Calculated Area: 163 sq. ft  
Included: Yes

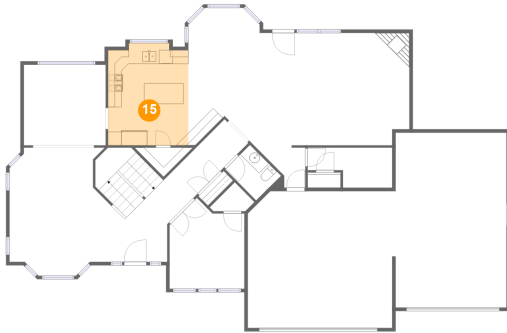
Heated: Yes  
Finished: Yes  
Enclosed: Yes  
Contiguous: Yes  
Permitted: Yes  
Wet space: No  
Addition: No  
Conversion: No

## Home report

3371 Waterbridge Cove, Midas Creek, South Jordan, Salt Lake County, Utah, United States, 84095

### 15 Floor 2 - Kitchen

---

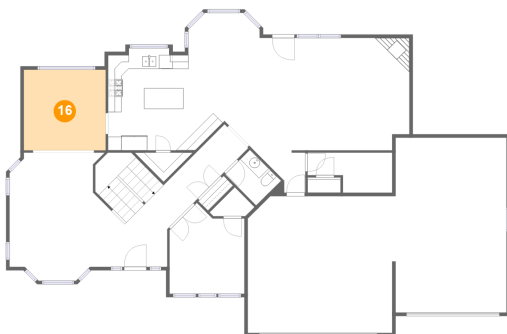


Max Dimensions: 11'9" x 15'0"  
Calculated Area: 170 sq. ft  
Included: Yes

Heated: Yes  
Finished: Yes  
Enclosed: Yes  
Contiguous: Yes  
Permitted: Yes  
Wet space: No  
Addition: No  
Conversion: No

### 16 Floor 2 - Office

---



Max Dimensions: 12'0" x 11'10"  
Calculated Area: 142 sq. ft  
Included: Yes

Heated: Yes  
Finished: Yes  
Enclosed: Yes  
Contiguous: Yes  
Permitted: Yes  
Wet space: No  
Addition: No  
Conversion: No

### 17 Floor 2 - WC

---



Max Dimensions: 6'5" x 5'1"  
Calculated Area: 33 sq. ft  
Included: Yes

Heated: Yes  
Finished: Yes  
Enclosed: Yes  
Contiguous: Yes  
Permitted: Yes  
Wet space: Yes  
Addition: No  
Conversion: No

3371 Waterbridge Cove, Midas Creek, South Jordan, Salt Lake County, Utah, United States, 84095

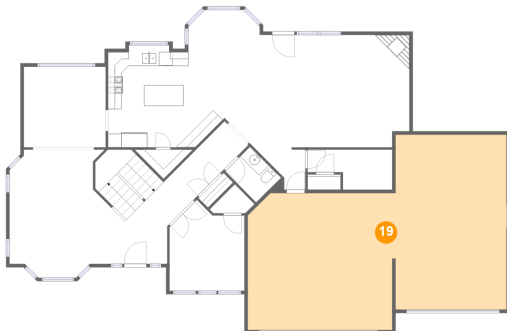
## 18 Floor 2 - Room



Max Dimensions: 12'5" x 5'10"  
Calculated Area: 60 sq. ft  
Included: Yes

Heated: Yes  
Finished: Yes  
Enclosed: Yes  
Contiguous: Yes  
Permitted: Yes  
Wet space: No  
Addition: No  
Conversion: No

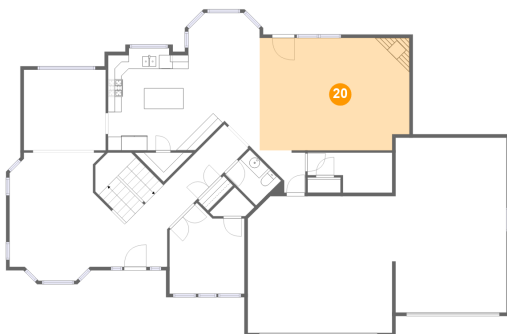
## 19 Floor 2 - Garage



Max Dimensions: 37'11" x 25'7"  
Calculated Area: 840 sq. ft  
Included: No

Heated: No  
Finished: No  
Enclosed: Yes  
Contiguous: Yes  
Permitted: Yes  
Wet space: No  
Addition: No  
Conversion: No

## 20 Floor 2 - Family Room



Max Dimensions: 21'11" x 16'6"  
Calculated Area: 355 sq. ft  
Included: Yes

Heated: Yes  
Finished: Yes  
Enclosed: Yes  
Contiguous: Yes  
Permitted: Yes  
Wet space: No  
Addition: No  
Conversion: No

3371 Waterbridge Cove, Midas Creek, South Jordan, Salt Lake County, Utah, United States, 84095

### 21 Floor 3 - Open To Below



Max Dimensions: 23'2" x 18'9"  
Calculated Area: 304 sq. ft  
Included: No

Heated: No  
Finished: No  
Enclosed: No  
Contiguous: Yes  
Permitted: No  
Wet space: No  
Addition: No  
Conversion: No

### 22 Floor 3 - WC



Max Dimensions: 2'11" x 5'1"  
Calculated Area: 15 sq. ft  
Included: Yes

Heated: Yes  
Finished: Yes  
Enclosed: Yes  
Contiguous: Yes  
Permitted: Yes  
Wet space: Yes  
Addition: No  
Conversion: No

### 23 Floor 3 - Bath



Max Dimensions: 6'4" x 8'6"  
Calculated Area: 50 sq. ft  
Included: Yes

Heated: Yes  
Finished: Yes  
Enclosed: Yes  
Contiguous: Yes  
Permitted: Yes  
Wet space: Yes  
Addition: No  
Conversion: No

3371 Waterbridge Cove, Midas Creek, South Jordan, Salt Lake County, Utah, United States, 84095

### 24 Floor 3 - Bath



Max Dimensions: 5'10" x 5'4"  
Calculated Area: 31 sq. ft  
Included: Yes

Heated: Yes  
Finished: Yes  
Enclosed: Yes  
Contiguous: Yes  
Permitted: Yes  
Wet space: Yes  
Addition: No  
Conversion: No

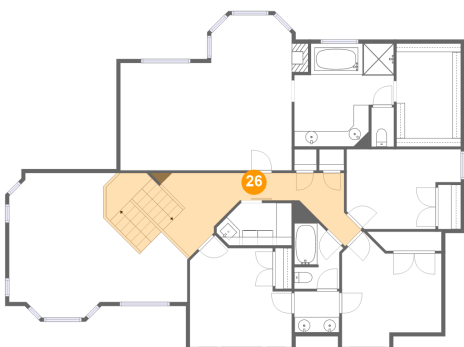
### 25 Floor 3 - Primary Bedroom



Max Dimensions: 22'3" x 20'2"  
Calculated Area: 377 sq. ft  
Included: Yes

Heated: Yes  
Finished: Yes  
Enclosed: Yes  
Contiguous: Yes  
Permitted: Yes  
Wet space: No  
Addition: No  
Conversion: No

### 26 Floor 3 - Hall



Max Dimensions: 23'0" x 10'10"  
Calculated Area: 214 sq. ft  
Included: Yes

Heated: Yes  
Finished: Yes  
Enclosed: Yes  
Contiguous: Yes  
Permitted: Yes  
Wet space: No  
Addition: No  
Conversion: No



3371 Waterbridge Cove, Midas Creek, South Jordan, Salt Lake County, Utah, United States, 84095

27 Floor 3 - W.I.C.



Max Dimensions: 8'4" x 13'5"  
Calculated Area: 112 sq. ft  
Included: Yes

Heated: Yes  
Finished: Yes  
Enclosed: Yes  
Contiguous: Yes  
Permitted: Yes  
Wet space: No  
Addition: No  
Conversion: No

28 Floor 3 - Bedroom



Max Dimensions: 14'10" x 10'4"  
Calculated Area: 131 sq. ft  
Included: Yes

Heated: Yes  
Finished: Yes  
Enclosed: Yes  
Contiguous: Yes  
Permitted: Yes  
Wet space: No  
Addition: No  
Conversion: No

29 Floor 3 - Bedroom



Max Dimensions: 12'11" x 14'11"  
Calculated Area: 152 sq. ft  
Included: Yes

Heated: Yes  
Finished: Yes  
Enclosed: Yes  
Contiguous: Yes  
Permitted: Yes  
Wet space: No  
Addition: No  
Conversion: No

3371 Waterbridge Cove, Midas Creek, South Jordan, Salt Lake County, Utah, United States, 84095

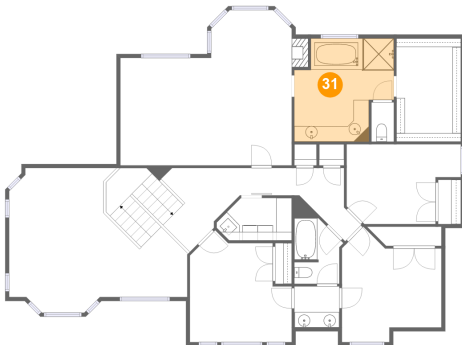
### 30 Floor 3 - Bedroom



Max Dimensions: 13'3" x 14'6"  
Calculated Area: 157 sq. ft  
Included: Yes

Heated: Yes  
Finished: Yes  
Enclosed: Yes  
Contiguous: Yes  
Permitted: Yes  
Wet space: No  
Addition: No  
Conversion: No

### 31 Floor 3 - Primary Bath



Max Dimensions: 12'11" x 13'5"  
Calculated Area: 147 sq. ft  
Included: Yes

Heated: Yes  
Finished: Yes  
Enclosed: Yes  
Contiguous: Yes  
Permitted: Yes  
Wet space: Yes  
Addition: No  
Conversion: No

### 32 Floor 3 - Laundry



Max Dimensions: 9'9" x 5'6"  
Calculated Area: 47 sq. ft  
Included: Yes

Heated: Yes  
Finished: Yes  
Enclosed: Yes  
Contiguous: Yes  
Permitted: Yes  
Wet space: No  
Addition: No  
Conversion: No