



Home report

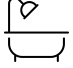
5561 Cider Mill Court, The Orchards, Roanoke, Roanoke County,
Virginia, United States, 24012




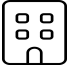
Property summary


 **1** Garages


 **3** Bedrooms

 **2** Bathrooms

 **0** Half baths

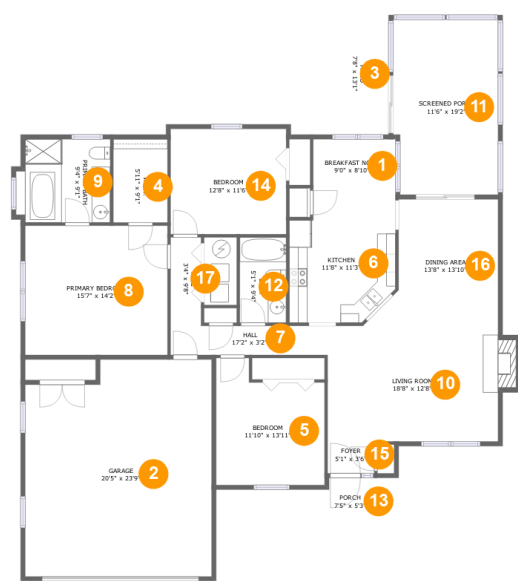
 **1** Floors

 **1,659** Gross living area sqft

 **2,533** Total sqft

Home report

5561 Cider Mill Court, The Orchards, Roanoke, Roanoke County, Virginia, United States, 24012



Room dimensions

Floor 1 Total sqft: 2533 Living area: 1659

#		Max Dimensions	sqft	Included
1	Breakfast Nook	9'0" x 8'10"	80 sq. ft	Yes
2	Garage	20'5" x 23'9"	462 sq. ft	No
3	Patio	7'8" x 13'1"	100 sq. ft	No
4	W.I.C.	5'11" x 9'1"	54 sq. ft	Yes
5	Bedroom	11'10" x 13'11"	143 sq. ft	Yes
6	Kitchen	11'8" x 11'3"	125 sq. ft	Yes
7	Hall	17'2" x 3'2"	55 sq. ft	Yes
8	Primary Bedroom	15'7" x 14'2"	220 sq. ft	Yes
9	Primary Bath	9'4" x 9'1"	90 sq. ft	Yes
10	Living Room	18'8" x 12'8"	247 sq. ft	Yes
11	Screened Porch	11'6" x 19'2"	215 sq. ft	No

Home report

**5561 Cider Mill Court, The Orchards, Roanoke, Roanoke County,
Virginia, United States, 24012**

#		Max Dimensions	sqft	Included
12	Bath	5'1" x 9'4"	47 sq. ft	Yes
13	Porch	7'5" x 5'3"	37 sq. ft	No
14	Bedroom	12'8" x 11'6"	146 sq. ft	Yes
15	Foyer	5'1" x 3'6"	18 sq. ft	Yes
16	Dining Area	13'8" x 13'10"	158 sq. ft	Yes
17	Hall	3'4" x 9'8"	32 sq. ft	Yes

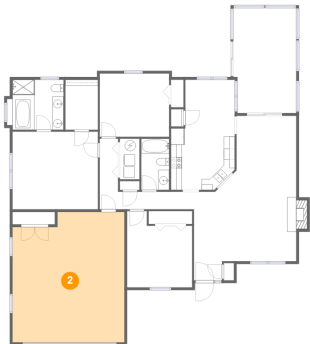
1 Floor 1 - Breakfast Nook



Max Dimensions: 9'0" x 8'10"
Calculated Area: 80 sq. ft
Included: Yes

Heated: Yes
Finished: Yes
Enclosed: Yes
Contiguous: Yes
Permitted: Yes
Wet space: No
Addition: No
Conversion: No

2 Floor 1 - Garage



Max Dimensions: 20'5" x 23'9"
Calculated Area: 462 sq. ft
Included: No

Heated: No
Finished: No
Enclosed: Yes
Contiguous: Yes
Permitted: Yes
Wet space: No
Addition: No
Conversion: No

5561 Cider Mill Court, The Orchards, Roanoke, Roanoke County,
Virginia, United States, 24012

3 Floor 1 - Patio



Max Dimensions: 7'8" x
13'1"
Calculated Area: 100 sq. ft
Included: No

Heated: No
Finished: Yes
Enclosed: No
Contiguous:
Yes
Permitted: Yes
Wet space: No
Addition: No
Conversion: No

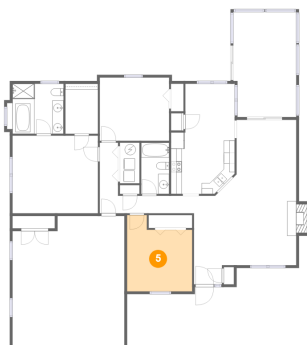
4 Floor 1 - W.I.C.



Max Dimensions: 5'11" x
9'1"
Calculated Area: 54 sq. ft
Included: Yes

Heated: Yes
Finished: Yes
Enclosed: Yes
Contiguous:
Yes
Permitted: Yes
Wet space: No
Addition: No
Conversion: No

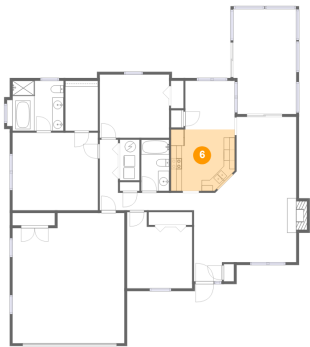
5 Floor 1 - Bedroom



Max Dimensions: 11'10" x
13'11"
Calculated Area: 143 sq. ft
Included: Yes

Heated: Yes
Finished: Yes
Enclosed: Yes
Contiguous:
Yes
Permitted: Yes
Wet space: No
Addition: No
Conversion: No

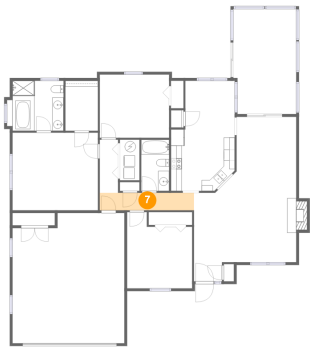
6 Floor 1 - Kitchen



Max Dimensions: 11'8" x 11'3"
Calculated Area: 125 sq. ft
Included: Yes

Heated: Yes
Finished: Yes
Enclosed: Yes
Contiguous: Yes
Permitted: Yes
Wet space: No
Addition: No
Conversion: No

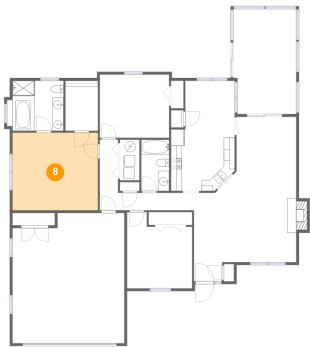
7 Floor 1 - Hall



Max Dimensions: 17'2" x 3'2"
Calculated Area: 55 sq. ft
Included: Yes

Heated: Yes
Finished: Yes
Enclosed: Yes
Contiguous: Yes
Permitted: Yes
Wet space: No
Addition: No
Conversion: No

8 Floor 1 - Primary Bedroom



Max Dimensions: 15'7" x 14'2"
Calculated Area: 220 sq. ft
Included: Yes

Heated: Yes
Finished: Yes
Enclosed: Yes
Contiguous: Yes
Permitted: Yes
Wet space: No
Addition: No
Conversion: No

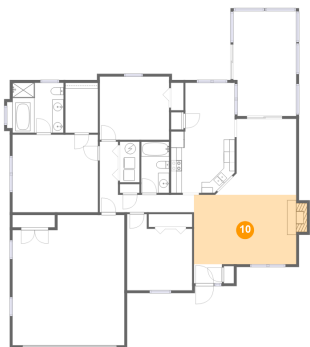
9 Floor 1 - Primary Bath



Max Dimensions: 9'4" x 9'1"
Calculated Area: 90 sq. ft
Included: Yes

Heated: Yes
Finished: Yes
Enclosed: Yes
Contiguous: Yes
Permitted: Yes
Wet space: Yes
Addition: No
Conversion: No

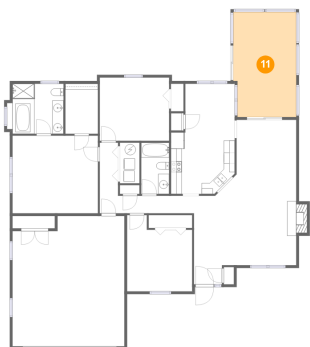
10 Floor 1 - Living Room



Max Dimensions: 18'8" x 12'8"
Calculated Area: 247 sq. ft
Included: Yes

Heated: Yes
Finished: Yes
Enclosed: Yes
Contiguous: Yes
Permitted: Yes
Wet space: No
Addition: No
Conversion: No

11 Floor 1 - Screened Porch



Max Dimensions: 11'6" x 19'2"
Calculated Area: 215 sq. ft
Included: No

Heated: No
Finished: Yes
Enclosed: No
Contiguous: Yes
Permitted: Yes
Wet space: No
Addition: No
Conversion: No

5561 Cider Mill Court, The Orchards, Roanoke, Roanoke County,
Virginia, United States, 24012

12 Floor 1 - Bath



Max Dimensions: 5'1" x 9'4"
Calculated Area: 47 sq. ft
Included: Yes

Heated: Yes
Finished: Yes
Enclosed: Yes
Contiguous: Yes
Permitted: Yes
Wet space: Yes
Addition: No
Conversion: No

13 Floor 1 - Porch



Max Dimensions: 7'5" x 5'3"
Calculated Area: 37 sq. ft
Included: No

Heated: No
Finished: Yes
Enclosed: No
Contiguous: Yes
Permitted: Yes
Wet space: No
Addition: No
Conversion: No

14 Floor 1 - Bedroom



Max Dimensions: 12'8" x
11'6"
Calculated Area: 146 sq. ft
Included: Yes

Heated: Yes
Finished: Yes
Enclosed: Yes
Contiguous:
Yes
Permitted: Yes
Wet space: No
Addition: No
Conversion: No

5561 Cider Mill Court, The Orchards, Roanoke, Roanoke County,
Virginia, United States, 24012

15 Floor 1 - Foyer



Max Dimensions: 5'1" x 3'6"
Calculated Area: 18 sq. ft
Included: Yes

Heated: Yes
Finished: Yes
Enclosed: Yes
Contiguous: Yes
Permitted: Yes
Wet space: No
Addition: No
Conversion: No

16 Floor 1 - Dining Area



Max Dimensions: 13'8" x
13'10"
Calculated Area: 158 sq. ft
Included: Yes

Heated: Yes
Finished: Yes
Enclosed: Yes
Contiguous:
Yes
Permitted: Yes
Wet space: No
Addition: No
Conversion: No

17 Floor 1 - Hall



Max Dimensions: 3'4" x 9'8"
Calculated Area: 32 sq. ft
Included: Yes

Heated: Yes
Finished: Yes
Enclosed: Yes
Contiguous: Yes
Permitted: Yes
Wet space: No
Addition: No
Conversion: No