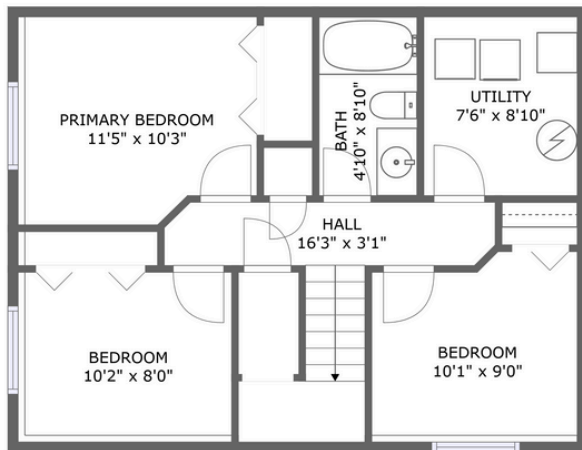
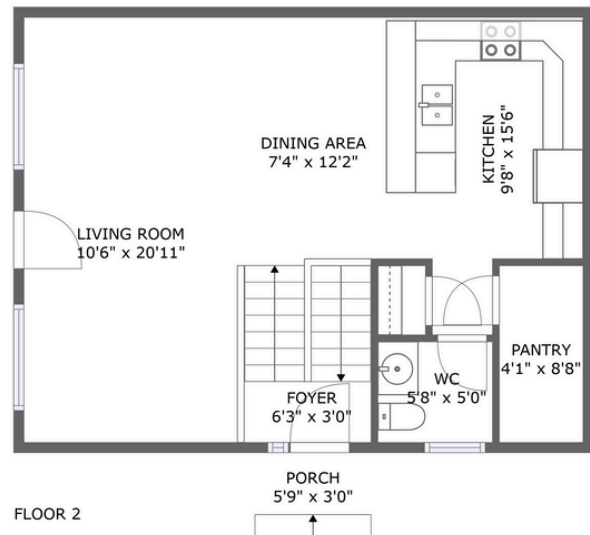


Home data report

24 Cougar Cove N, Uplands, North Lethbridge,
Lethbridge, Alberta, Canada, T1H 5V4, 3

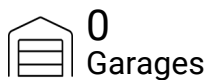


FLOOR 1



FLOOR 2

Property summary



0
Garages



3
Bedrooms



1
Bathrooms



1
Half baths



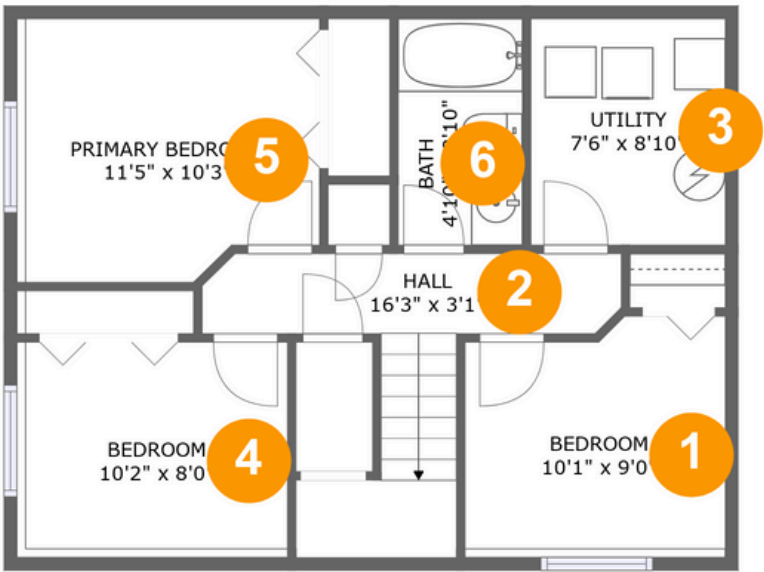
2
Floors



1,170
Gross living
area sqft



1,260
Total sqft



Room dimensions

Floor 1

Total sqft: 618 Living area: 545

#		Dimensions	sqft	Counted as living area
1	Bedroom	10'1" x 9'0"	89 sq. ft	Yes
2	Hall	16'3" x 3'1"	85 sq. ft	Yes
3	Utility	7'6" x 8'10"	66 sq. ft	No
4	Bedroom	10'2" x 8'0"	88 sq. ft	Yes
5	Bedroom	11'5" x 10'3"	114 sq. ft	Yes
6	Bath	4'10" x 8'10"	42 sq. ft	Yes



Room dimensions

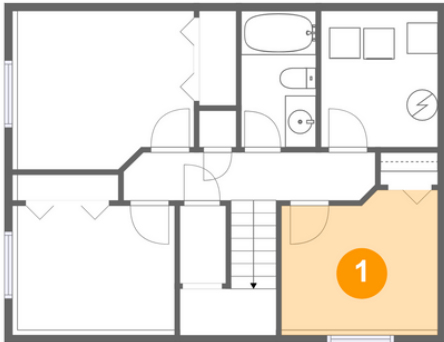
Floor 2

Total sqft: 642 Living area: 625

#		Dimensions	sqft	Counted as living area
7	Bath	5'8" x 5'0"	28 sq. ft	Yes
8	Dining Room	7'4" x 12'2"	127 sq. ft	Yes
9	Kitchen	9'8" x 15'6"	126 sq. ft	Yes
10	Pantry	4'1" x 8'8"	36 sq. ft	Yes
11	Entry	6'3" x 3'0"	20 sq. ft	Yes
12	Outdoor	5'9" x 3'0"	17 sq. ft	No
13	Living Room	10'6" x 20'11"	220 sq. ft	Yes



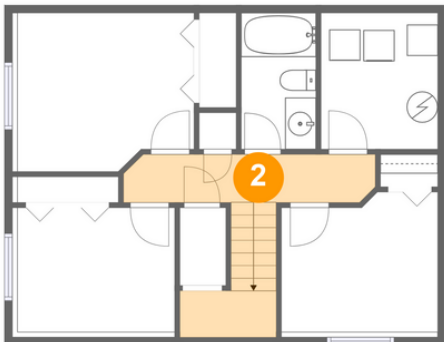
1 Floor 1 - Bedroom



Dimensions: 10'1" x 9'0"
Area: 89 sq. ft
Counted as living area: Yes

Heated: Yes
Finished: Yes
Enclosed: Yes
Contiguous: Yes
Permitted: Yes
Wet space: No
Addition: No
Conversion: No

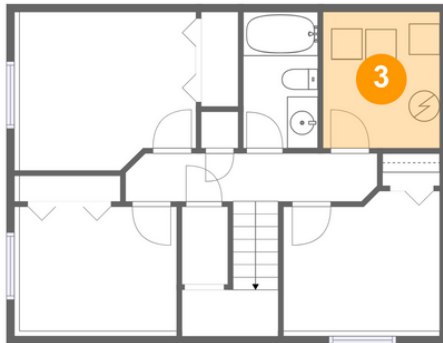
2 Floor 1 - Hall



Dimensions: 16'3" x 3'1"
Area: 85 sq. ft
Counted as living area: Yes

Heated: Yes
Finished: Yes
Enclosed: Yes
Contiguous: Yes
Permitted: Yes
Wet space: No
Addition: No
Conversion: No

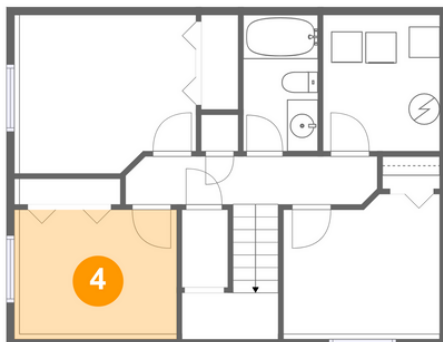
3 Floor 1 - Utility



Dimensions: 7'6" x 8'10"
Area: 66 sq. ft
Counted as living area: No

Heated: Yes
Finished: No
Enclosed: Yes
Contiguous: Yes
Permitted: Yes
Wet space: No
Addition: No
Conversion: No

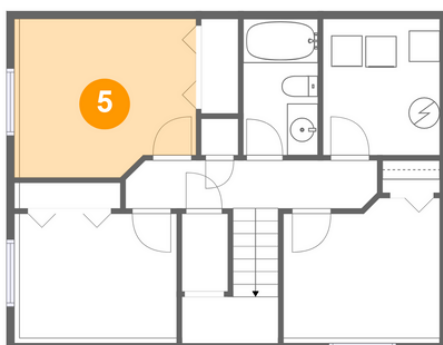
4 Floor 1 - Bedroom



Dimensions: 10'2" x 8'0"
Area: 88 sq. ft
Counted as living area: Yes

Heated: Yes
Finished: Yes
Enclosed: Yes
Contiguous: Yes
Permitted: Yes
Wet space: No
Addition: No
Conversion: No

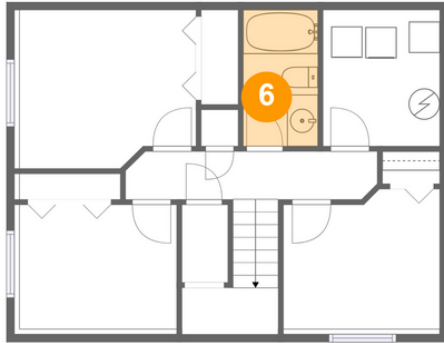
5 Floor 1 - Bedroom



Dimensions: 11'5" x 10'3"
Area: 114 sq. ft
Counted as living area: Yes

Heated: Yes
Finished: Yes
Enclosed: Yes
Contiguous: Yes
Permitted: Yes
Wet space: No
Addition: No
Conversion: No

6 Floor 1 - Bath



Dimensions: 4'10" x 8'10"
Area: 42 sq. ft
Counted as living area: Yes

Heated: Yes
Finished: Yes
Enclosed: Yes
Contiguous: Yes
Permitted: Yes
Wet space: Yes
Addition: No
Conversion: No

7 Floor 2 - Bath



Dimensions: 5'8" x 5'0"
Area: 28 sq. ft
Counted as living area: Yes

Heated: Yes
Finished: Yes
Enclosed: Yes
Contiguous: Yes
Permitted: Yes
Wet space: Yes
Addition: No
Conversion: No

8 Floor 2 - Dining Room



Dimensions: 7'4" x 12'2"
Area: 127 sq. ft
Counted as living area: Yes

Heated: Yes
Finished: Yes
Enclosed: Yes
Contiguous: Yes
Permitted: Yes
Wet space: No
Addition: No
Conversion: No

9 Floor 2 - Kitchen



Dimensions: 9'8" x 15'6"
Area: 126 sq. ft
Counted as living area: Yes

Heated: Yes
Finished: Yes
Enclosed: Yes
Contiguous: Yes
Permitted: Yes
Wet space: No
Addition: No
Conversion: No

10 Floor 2 - Pantry



Dimensions: 4'1" x 8'8"
Area: 36 sq. ft
Counted as living area: Yes

Heated: Yes
Finished: Yes
Enclosed: Yes
Contiguous: Yes
Permitted: Yes
Wet space: No
Addition: No
Conversion: No

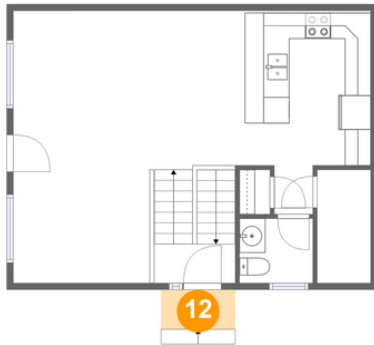
11 Floor 2 - Entry



Dimensions: 6'3" x 3'0"
Area: 20 sq. ft
Counted as living area: Yes

Heated: Yes
Finished: Yes
Enclosed: Yes
Contiguous: Yes
Permitted: Yes
Wet space: No
Addition: No
Conversion: No

12 Floor 2 - Outdoor



Dimensions: 5'9" x 3'0"
Area: 17 sq. ft
Counted as living area: No

Heated: No
Finished: Yes
Enclosed: No
Contiguous: Yes
Permitted: Yes
Wet space: No
Addition: No
Conversion: No

13 Floor 2 - Living Room



Dimensions: 10'6" x 20'11"
Area: 220 sq. ft
Counted as living area: Yes

Heated: Yes
Finished: Yes
Enclosed: Yes
Contiguous: Yes
Permitted: Yes
Wet space: No
Addition: No
Conversion: No