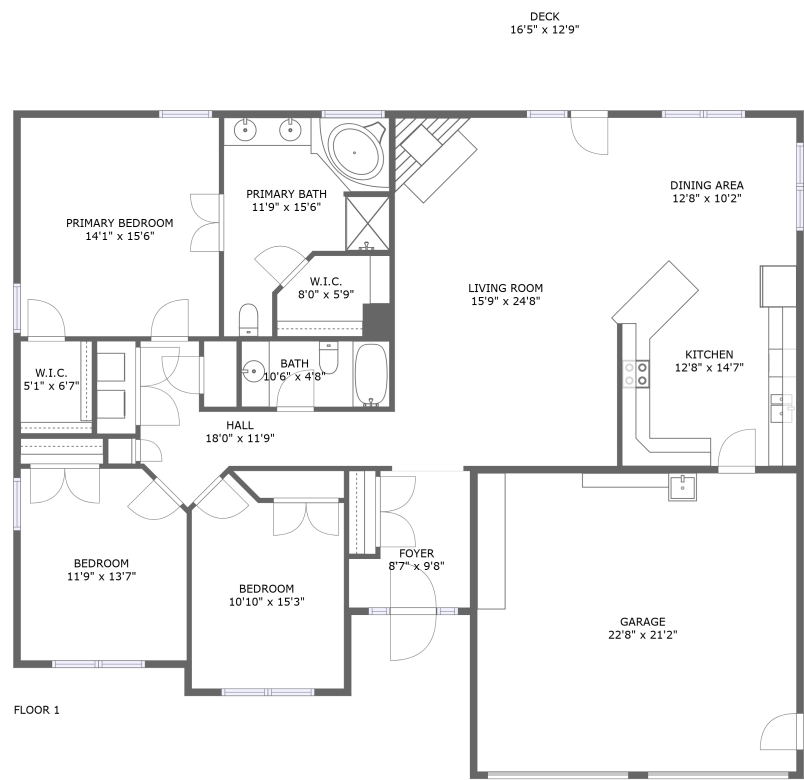


Home report

706 Bradford Circle, Braxton Heights, Salem, Salem city,
Virginia, United States, 24153




Total Area: 1785 sq. ft

Floor 1: 1785 sq. ft

Excluded: Garage 479 sq. ft, Deck 210 sq. ft, Walls: 124 sq. ft

Property summary

 **1** Floors

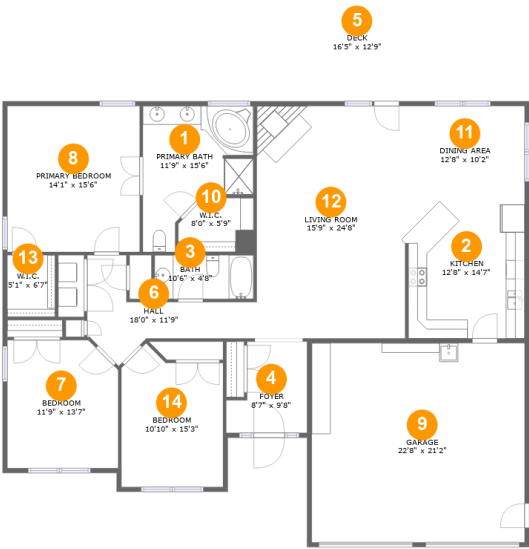
 **3** Bedrooms

 **2** Bathrooms

 **1** Garages

Home report

706 Bradford Circle, Braxton Heights, Salem, Salem city,
Virginia, United States, 24153



Room dimensions

Floor 1 Total:1785sqft Excluded: 689sqft

#		Max Dimensions	sqft	Included
1	Primary Bath	11'9" x 15'6"	135 sq. ft	Yes
2	Kitchen	12'8" x 14'7"	182 sq. ft	Yes
3	Bath	10'6" x 4'8"	49 sq. ft	Yes
4	Foyer	8'7" x 9'8"	69 sq. ft	Yes
5	Deck	16'5" x 12'9"	210 sq. ft	No
6	Hall	18'0" x 11'9"	99 sq. ft	Yes
7	Bedroom	11'9" x 13'7"	155 sq. ft	Yes
8	Primary Bedroom	14'1" x 15'6"	218 sq. ft	Yes
9	Garage	22'8" x 21'2"	479 sq. ft	No
10	W.I.C.	8'0" x 5'9"	42 sq. ft	Yes
11	Dining Area	12'8" x 10'2"	129 sq. ft	Yes

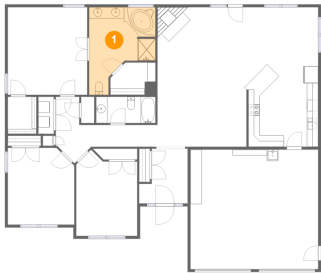
Home report

706 Bradford Circle, Braxton Heights, Salem, Salem city,
Virginia, United States, 24153

#		Max Dimensions	sqft	Included
12	Living Room	15'9" x 24'8"	390 sq. ft	Yes
13	W.I.C.	5'1" x 6'7"	33 sq. ft	Yes
14	Bedroom	10'10" x 15'3"	147 sq. ft	Yes

706 Bradford Circle, Braxton Heights, Salem, Salem city,
Virginia, United States, 24153

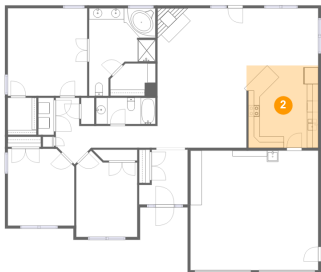
1 Floor 1 - Primary Bath



Max Dimensions: 11'9" x 15'6"
Calculated Area: 135 sq. ft
Included: Yes

Heated: Yes
Finished: Yes
Enclosed: Yes
Contiguous: Yes
Permitted: Yes
Wet space: Yes
Addition: No
Conversion: No

2 Floor 1 - Kitchen

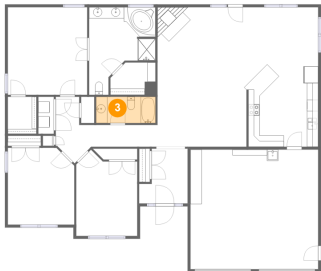


Max Dimensions: 12'8" x 14'7"
Calculated Area: 182 sq. ft
Included: Yes

Heated: Yes
Finished: Yes
Enclosed: Yes
Contiguous: Yes
Permitted: Yes
Wet space: No
Addition: No
Conversion: No

706 Bradford Circle, Braxton Heights, Salem, Salem city,
Virginia, United States, 24153

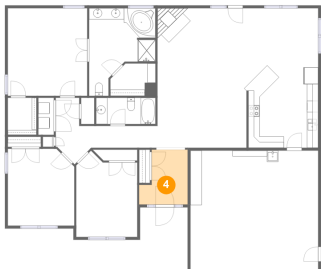
3 Floor 1 - Bath



Max Dimensions: 10'6" x 4'8"
Calculated Area: 49 sq. ft
Included: Yes

Heated: Yes
Finished: Yes
Enclosed: Yes
Contiguous: Yes
Permitted: Yes
Wet space: Yes
Addition: No
Conversion: No

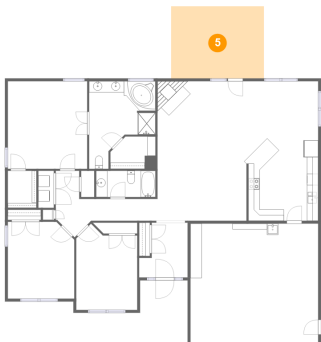
4 Floor 1 - Foyer



Max Dimensions: 8'7" x 9'8"
Calculated Area: 69 sq. ft
Included: Yes

Heated: Yes
Finished: Yes
Enclosed: Yes
Contiguous: Yes
Permitted: Yes
Wet space: No
Addition: No
Conversion: No

5 Floor 1 - Deck

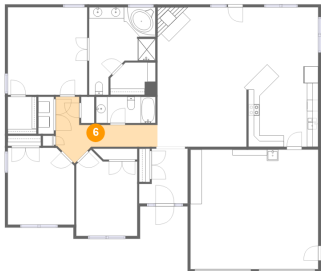


Max Dimensions: 16'5" x 12'9"
Calculated Area: 210 sq. ft
Included: No

Heated: No
Finished: Yes
Enclosed: No
Contiguous: Yes
Permitted: Yes
Wet space: No
Addition: No
Conversion: No

706 Bradford Circle, Braxton Heights, Salem, Salem city,
Virginia, United States, 24153

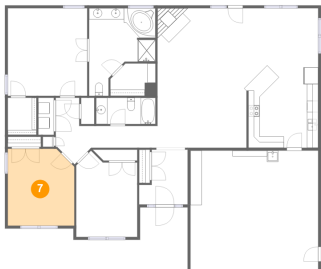
6 Floor 1 - Hall



Max Dimensions: 18'0" x 11'9"
Calculated Area: 99 sq. ft
Included: Yes

Heated: Yes
Finished: Yes
Enclosed: Yes
Contiguous: Yes
Permitted: Yes
Wet space: No
Addition: No
Conversion: No

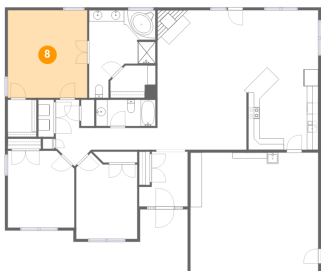
7 Floor 1 - Bedroom



Max Dimensions: 11'9" x 13'7"
Calculated Area: 155 sq. ft
Included: Yes

Heated: Yes
Finished: Yes
Enclosed: Yes
Contiguous: Yes
Permitted: Yes
Wet space: No
Addition: No
Conversion: No

8 Floor 1 - Primary Bedroom

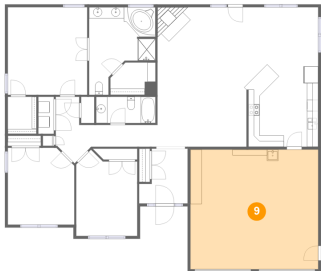


Max Dimensions: 14'1" x 15'6"
Calculated Area: 218 sq. ft
Included: Yes

Heated: Yes
Finished: Yes
Enclosed: Yes
Contiguous: Yes
Permitted: Yes
Wet space: No
Addition: No
Conversion: No

706 Bradford Circle, Braxton Heights, Salem, Salem city,
Virginia, United States, 24153

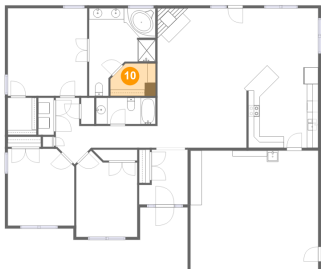
9 Floor 1 - Garage



Max Dimensions: 22'8" x 21'2"
Calculated Area: 479 sq. ft
Included: No

Heated: No
Finished: No
Enclosed: Yes
Contiguous: Yes
Permitted: Yes
Wet space: No
Addition: No
Conversion: No

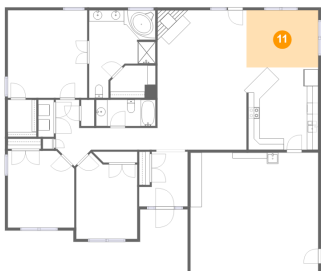
10 Floor 1 - W.I.C.



Max Dimensions: 8'0" x 5'9"
Calculated Area: 42 sq. ft
Included: Yes

Heated: Yes
Finished: Yes
Enclosed: Yes
Contiguous: Yes
Permitted: Yes
Wet space: No
Addition: No
Conversion: No

11 Floor 1 - Dining Area

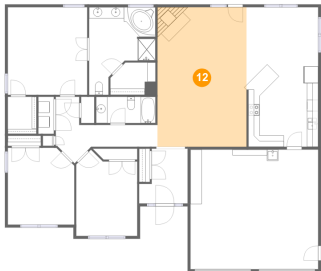


Max Dimensions: 12'8" x 10'2"
Calculated Area: 129 sq. ft
Included: Yes

Heated: Yes
Finished: Yes
Enclosed: Yes
Contiguous: Yes
Permitted: Yes
Wet space: No
Addition: No
Conversion: No

706 Bradford Circle, Braxton Heights, Salem, Salem city,
Virginia, United States, 24153

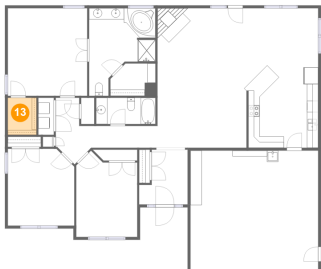
12 Floor 1 - Living Room



Max Dimensions: 15'9" x 24'8"
Calculated Area: 390 sq. ft
Included: Yes

Heated: Yes
Finished: Yes
Enclosed: Yes
Contiguous: Yes
Permitted: Yes
Wet space: No
Addition: No
Conversion: No

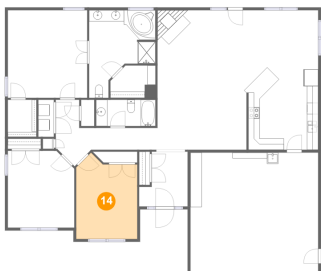
13 Floor 1 - W.I.C.



Max Dimensions: 5'1" x 6'7"
Calculated Area: 33 sq. ft
Included: Yes

Heated: Yes
Finished: Yes
Enclosed: Yes
Contiguous: Yes
Permitted: Yes
Wet space: No
Addition: No
Conversion: No

14 Floor 1 - Bedroom



Max Dimensions: 10'10" x 15'3"
Calculated Area: 147 sq. ft
Included: Yes

Heated: Yes
Finished: Yes
Enclosed: Yes
Contiguous: Yes
Permitted: Yes
Wet space: No
Addition: No
Conversion: No