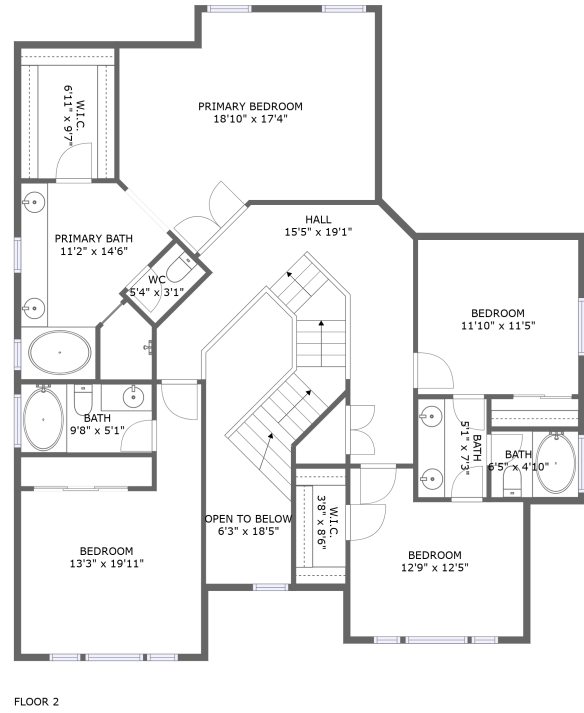
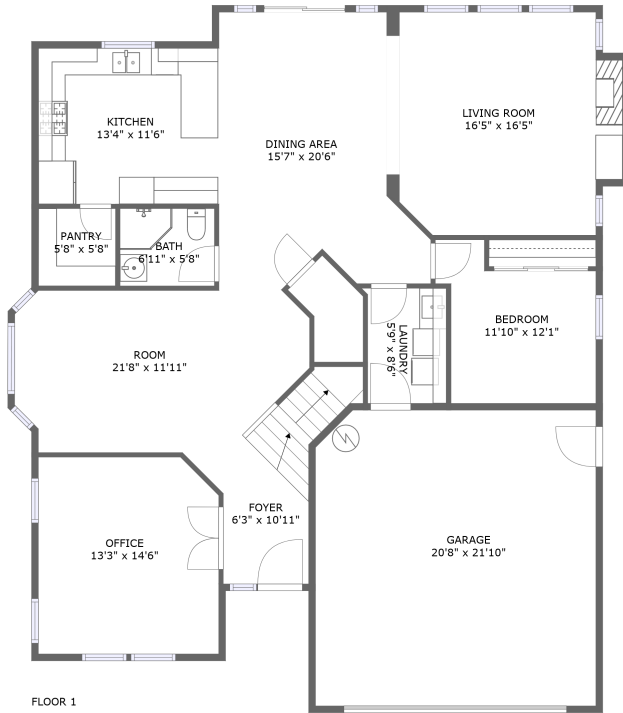


3854 Celestial Way, Lompoc, CA, US



Property summary

 **1** Garages

 **5** Bedrooms

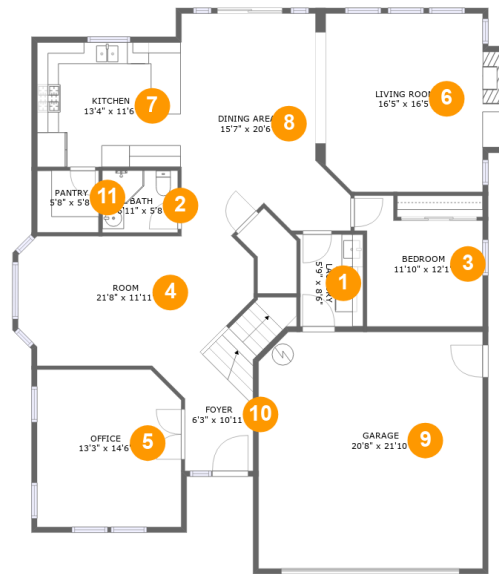
 **4** Bathrooms

 **0** Half baths

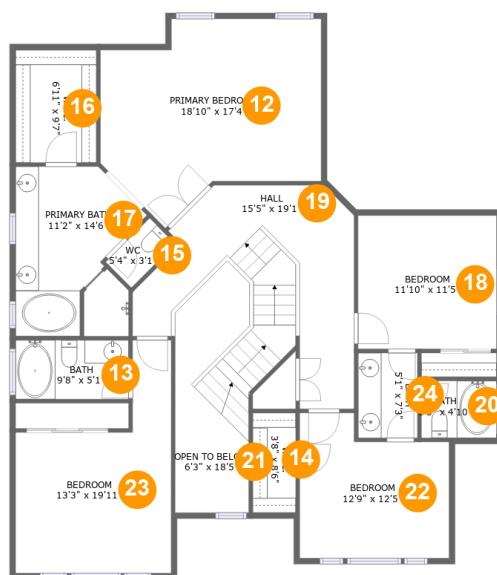
 **2** Floors

 **3,138** Gross living area sqft

 **3,713** Total sqft

3854 Celestial Way, Lompoc, CA, US**Room dimensions****Floor 1****Total sqft: 2081****Living area: 1609**

#		Dimensions	sqft	Counted as living area
1	Laundry	5'9" x 8'6"	49 sq. ft	Yes
2	Bath	6'11" x 5'8"	40 sq. ft	Yes
3	Bedroom	11'10" x 12'1"	113 sq. ft	Yes
4	Room	21'8" x 11'11"	230 sq. ft	Yes
5	Office	13'3" x 14'6"	189 sq. ft	Yes
6	Living Room	16'5" x 16'5"	252 sq. ft	Yes
7	Kitchen	13'4" x 11'6"	153 sq. ft	Yes
8	Dining Area	15'7" x 20'6"	259 sq. ft	Yes
9	Garage	20'8" x 21'10"	446 sq. ft	No
10	Foyer	6'3" x 10'11"	101 sq. ft	Yes
11	Pantry	5'8" x 5'8"	32 sq. ft	Yes

3854 Celestial Way, Lompoc, CA, US**Room dimensions**

Floor 2

Total sqft: 1632 Living area: 1529

#		Dimensions	sqft	Counted as living area
12	Primary Bedroom	18'10" x 17'4"	260 sq. ft	Yes
13	Bath	9'8" x 5'1"	49 sq. ft	Yes
14	W.I.C.	3'8" x 8'6"	31 sq. ft	Yes
15	WC	5'4" x 3'1"	17 sq. ft	Yes
16	W.I.C.	6'11" x 9'7"	66 sq. ft	Yes
17	Primary Bath	11'2" x 14'6"	131 sq. ft	Yes
18	Bedroom	11'10" x 11'5"	135 sq. ft	Yes
19	Hall	15'5" x 19'1"	243 sq. ft	Yes
20	Bath	6'5" x 4'10"	31 sq. ft	Yes
21	Open To Below	6'3" x 18'5"	100 sq. ft	No
22	Bedroom	12'9" x 12'5"	138 sq. ft	Yes

3854 Celestial Way,Lompoc,CA,US

#		Dimensions	sqft	Counted as living area
23	Bedroom	13'3" x 19'11"	186 sq. ft	Yes
24	Bath	5'1" x 7'3"	37 sq. ft	Yes

1 Floor 1 - Laundry



Dimensions: 5'9" x 8'6"
Area: 49 sq. ft
Counted as living area: Yes

Heated: Yes
Finished: Yes
Enclosed: Yes
Contiguous: Yes
Permitted: Yes
Wet space: No
Addition: No
Conversion: No

2 Floor 1 - Bath



Dimensions: 6'11" x 5'8"
Area: 40 sq. ft
Counted as living area: Yes

Heated: Yes
Finished: Yes
Enclosed: Yes
Contiguous: Yes
Permitted: Yes
Wet space: Yes
Addition: No
Conversion: No

3 Floor 1 - Bedroom



Dimensions: 11'10" x 12'1"
Area: 113 sq. ft
Counted as living area: Yes

Heated: Yes
Finished: Yes
Enclosed: Yes
Contiguous: Yes
Permitted: Yes
Wet space: No
Addition: No
Conversion: No

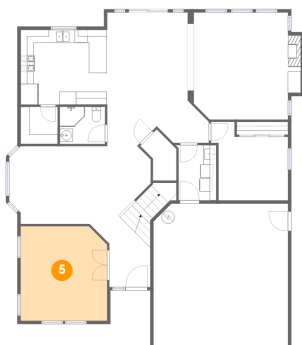
4 Floor 1 - Room



Dimensions: 21'8" x 11'11"
Area: 230 sq. ft
Counted as living area: Yes

Heated: Yes
Finished: Yes
Enclosed: Yes
Contiguous: Yes
Permitted: Yes
Wet space: No
Addition: No
Conversion: No

5 Floor 1 - Office



Dimensions: 13'3" x 14'6"
Area: 189 sq. ft
Counted as living area: Yes

Heated: Yes
Finished: Yes
Enclosed: Yes
Contiguous: Yes
Permitted: Yes
Wet space: No
Addition: No
Conversion: No

6 Floor 1 - Living Room



Dimensions: 16'5" x 16'5"
Area: 252 sq. ft
Counted as living area: Yes

Heated: Yes
Finished: Yes
Enclosed: Yes
Contiguous: Yes
Permitted: Yes
Wet space: No
Addition: No
Conversion: No

7 Floor 1 - Kitchen



Dimensions: 13'4" x 11'6"
Area: 153 sq. ft
Counted as living area: Yes

Heated: Yes
Finished: Yes
Enclosed: Yes
Contiguous: Yes
Permitted: Yes
Wet space: No
Addition: No
Conversion: No

8 Floor 1 - Dining Area



Dimensions: 15'7" x 20'6"
Area: 259 sq. ft
Counted as living area: Yes

Heated: Yes
Finished: Yes
Enclosed: Yes
Contiguous: Yes
Permitted: Yes
Wet space: No
Addition: No
Conversion: No

3854 Celestial Way, Lompoc, CA, US

9 Floor 1 - Garage



Dimensions: 20'8" x 21'10"
Area: 446 sq. ft
Counted as living area: No

Heated: No
Finished: No
Enclosed: Yes
Contiguous: Yes
Permitted: Yes
Wet space: No
Addition: No
Conversion: No

10 Floor 1 - Foyer



Dimensions: 6'3" x 10'11"
Area: 101 sq. ft
Counted as living area: Yes

Heated: Yes
Finished: Yes
Enclosed: Yes
Contiguous: Yes
Permitted: Yes
Wet space: No
Addition: No
Conversion: No

11 Floor 1 - Pantry

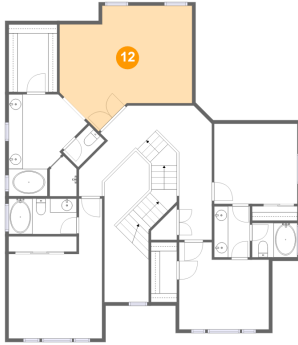


Dimensions: 5'8" x 5'8"
Area: 32 sq. ft
Counted as living area: Yes

Heated: Yes
Finished: Yes
Enclosed: Yes
Contiguous: Yes
Permitted: Yes
Wet space: No
Addition: No
Conversion: No

3854 Celestial Way, Lompoc, CA, US

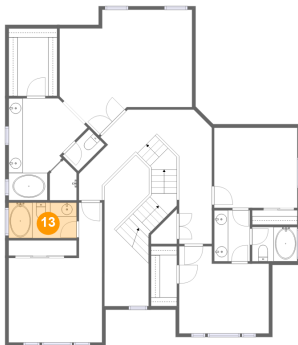
12 Floor 2 - Primary Bedroom



Dimensions: 18'10" x 17'4"
Area: 260 sq. ft
Counted as living area: Yes

Heated: Yes
Finished: Yes
Enclosed: Yes
Contiguous: Yes
Permitted: Yes
Wet space: No
Addition: No
Conversion: No

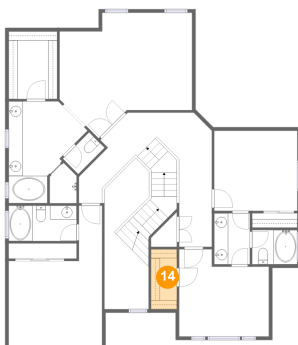
13 Floor 2 - Bath



Dimensions: 9'8" x 5'1"
Area: 49 sq. ft
Counted as living area: Yes

Heated: Yes
Finished: Yes
Enclosed: Yes
Contiguous: Yes
Permitted: Yes
Wet space: Yes
Addition: No
Conversion: No

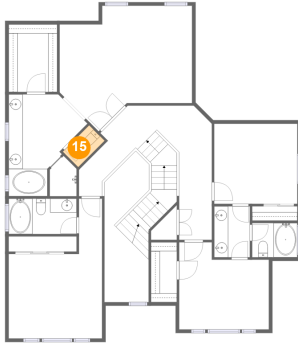
14 Floor 2 - W.I.C.



Dimensions: 3'8" x 8'6"
Area: 31 sq. ft
Counted as living area: Yes

Heated: Yes
Finished: Yes
Enclosed: Yes
Contiguous: Yes
Permitted: Yes
Wet space: No
Addition: No
Conversion: No

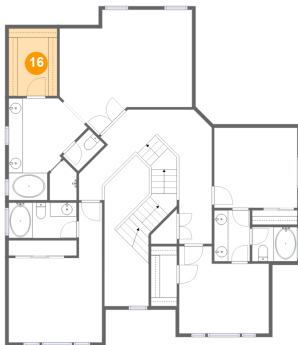
15 Floor 2 - WC



Dimensions: 5'4" x 3'1"
Area: 17 sq. ft
Counted as living area: Yes

Heated: Yes
Finished: Yes
Enclosed: Yes
Contiguous: Yes
Permitted: Yes
Wet space: Yes
Addition: No
Conversion: No

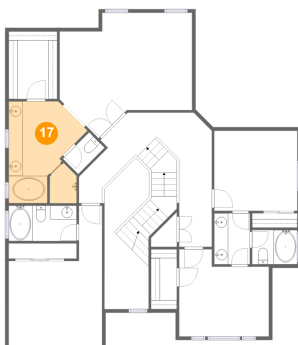
16 Floor 2 - W.I.C.



Dimensions: 6'11" x 9'7"
Area: 66 sq. ft
Counted as living area: Yes

Heated: Yes
Finished: Yes
Enclosed: Yes
Contiguous: Yes
Permitted: Yes
Wet space: No
Addition: No
Conversion: No

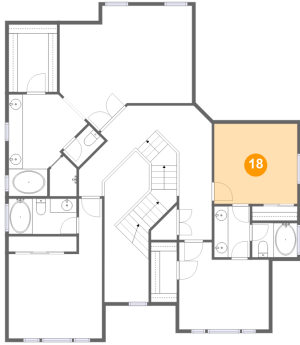
17 Floor 2 - Primary Bath



Dimensions: 11'2" x 14'6"
Area: 131 sq. ft
Counted as living area: Yes

Heated: Yes
Finished: Yes
Enclosed: Yes
Contiguous: Yes
Permitted: Yes
Wet space: Yes
Addition: No
Conversion: No

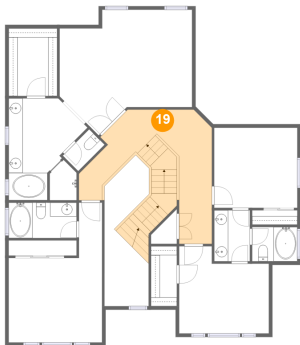
18 Floor 2 - Bedroom



Dimensions: 11'10" x 11'5"
Area: 135 sq. ft
Counted as living area: Yes

Heated: Yes
Finished: Yes
Enclosed: Yes
Contiguous: Yes
Permitted: Yes
Wet space: No
Addition: No
Conversion: No

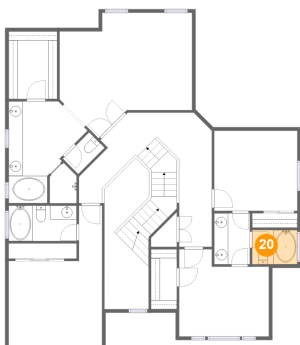
19 Floor 2 - Hall



Dimensions: 15'5" x 19'1"
Area: 243 sq. ft
Counted as living area: Yes

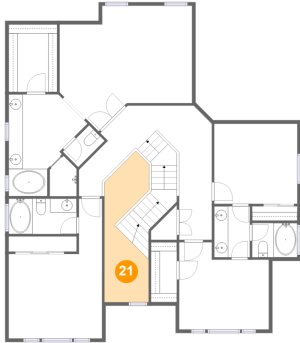
Heated: Yes
Finished: Yes
Enclosed: Yes
Contiguous: Yes
Permitted: Yes
Wet space: No
Addition: No
Conversion: No

20 Floor 2 - Bath



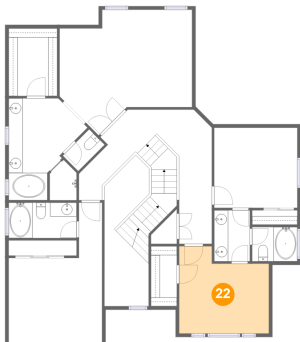
Dimensions: 6'5" x 4'10"
Area: 31 sq. ft
Counted as living area: Yes

Heated: Yes
Finished: Yes
Enclosed: Yes
Contiguous: Yes
Permitted: Yes
Wet space: Yes
Addition: No
Conversion: No

3854 Celestial Way,Lompoc,CA,US**21 Floor 2 - Open To Below**

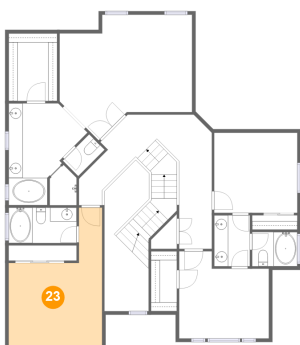
Dimensions: 6'3" x 18'5"
Area: 100 sq. ft
Counted as living area: No

Heated: No
Finished: No
Enclosed: No
Contiguous: Yes
Permitted: No
Wet space: No
Addition: No
Conversion: No

22 Floor 2 - Bedroom

Dimensions: 12'9" x 12'5"
Area: 138 sq. ft
Counted as living area: Yes

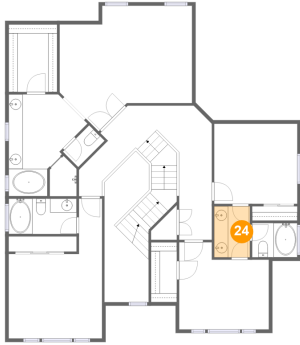
Heated: Yes
Finished: Yes
Enclosed: Yes
Contiguous: Yes
Permitted: Yes
Wet space: No
Addition: No
Conversion: No

23 Floor 2 - Bedroom

Dimensions: 13'3" x 19'11"
Area: 186 sq. ft
Counted as living area: Yes

Heated: Yes
Finished: Yes
Enclosed: Yes
Contiguous: Yes
Permitted: Yes
Wet space: No
Addition: No
Conversion: No

24 Floor 2 - Bath



Dimensions: 5'1" x 7'3"
Area: 37 sq. ft
Counted as living area: Yes

Heated: Yes
Finished: Yes
Enclosed: Yes
Contiguous: Yes
Permitted: Yes
Wet space: Yes
Addition: No
Conversion: No