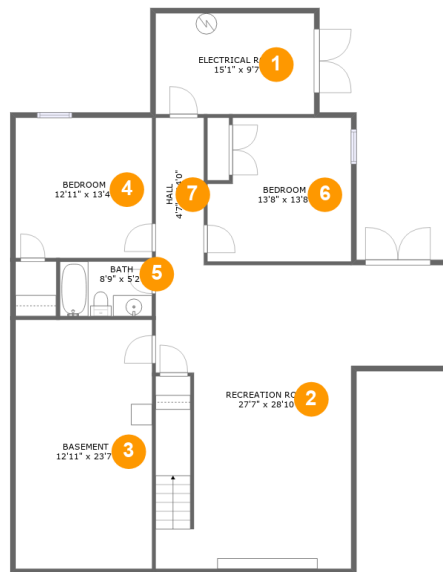


Home report

1865 Lees Mill Lane, Goode, Bedford County, Virginia, United States, 24556



Room dimensions

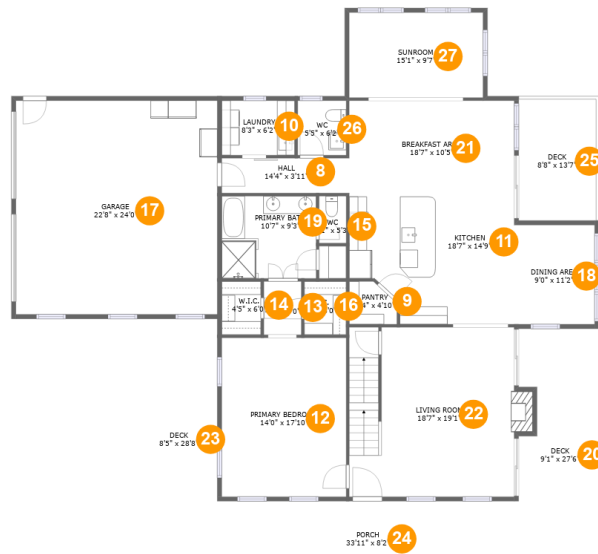
Floor 1

Total sqft: 1693 Living area: 1206

#		Dimensions	sqft	Counted as living area
1	Electrical Room	15'1" x 9'7"	144 sq. ft	No
2	Recreation Room	27'7" x 28'10"	615 sq. ft	Yes
3	Basement	12'11" x 23'7"	306 sq. ft	No
4	Bedroom	12'11" x 13'4"	172 sq. ft	Yes
5	Bath	8'9" x 5'2"	45 sq. ft	Yes
6	Bedroom	13'8" x 13'8"	171 sq. ft	Yes
7	Hall	4'7" x 14'0"	64 sq. ft	Yes

Home report

1865 Lees Mill Lane, Goode, Bedford County, Virginia, United States, 24556



Room dimensions

Floor 2

Total sqft: 3277 Living area: 1811

#		Dimensions	sqft	Counted as living area
8	Hall	14'4" x 3'11"	56 sq. ft	Yes
9	Pantry	5'4" x 4'10"	23 sq. ft	Yes
10	Laundry	8'3" x 6'2"	50 sq. ft	Yes
11	Kitchen	18'7" x 14'9"	248 sq. ft	Yes
12	Primary Bedroom	14'0" x 17'10"	250 sq. ft	Yes
13	Hall	4'3" x 6'0"	25 sq. ft	Yes
14	W.I.C.	4'5" x 6'0"	26 sq. ft	Yes
15	WC	3'1" x 5'3"	16 sq. ft	Yes
16	W.I.C.	4'9" x 6'0"	28 sq. ft	Yes
17	Garage	22'8" x 24'0"	544 sq. ft	No
18	Dining Area	9'0" x 11'2"	101 sq. ft	Yes

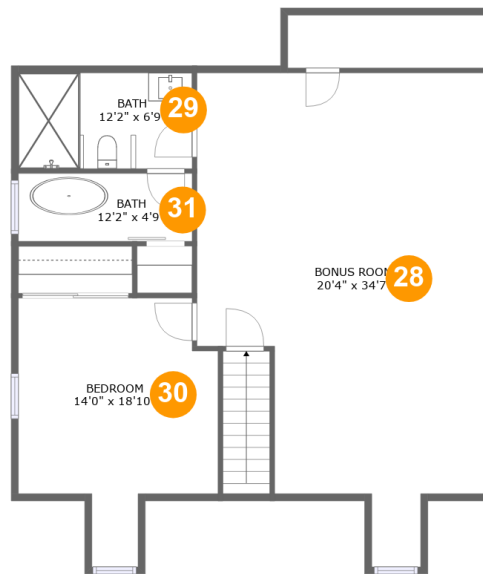
Home report

1865 Lees Mill Lane, Goode, Bedford County, Virginia, United States, 24556

#		Dimensions	sqft	Counted as living area
19	Primary Bath	10'7" x 9'3"	98 sq. ft	Yes
20	Deck	9'1" x 27'6"	238 sq. ft	No
21	Breakfast Area	18'7" x 10'5"	193 sq. ft	Yes
22	Living Room	18'7" x 19'1"	359 sq. ft	Yes
23	Deck	8'5" x 28'8"	241 sq. ft	No
24	Porch	33'11" x 8'2"	278 sq. ft	No
25	Deck	8'8" x 13'7"	119 sq. ft	No
26	WC	5'5" x 6'2"	33 sq. ft	Yes
27	Sunroom	15'1" x 9'7"	144 sq. ft	Yes

Home report

1865 Lees Mill Lane, Goode, Bedford County, Virginia, United States, 24556



Room dimensions

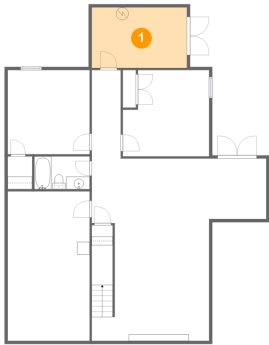
Floor 3

Total sqft: 1136 Living area: 973

#		Dimensions	sqft	Counted as living area
28	Bonus Room	20'4" x 34'7"	520 sq. ft	Yes
29	Bath	12'2" x 6'9"	70 sq. ft	Yes
30	Bedroom	14'0" x 18'10"	181 sq. ft	Yes
31	Bath	12'2" x 4'9"	58 sq. ft	Yes

1865 Lees Mill Lane, Goode, Bedford County, Virginia, United States, 24556

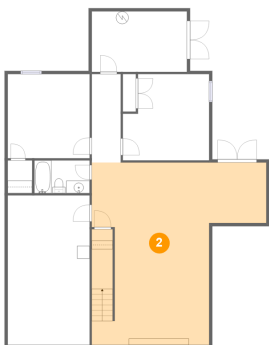
1 Floor 1 - Electrical Room



Dimensions: 15'1" x 9'7"
Area: 144 sq. ft
Counted as living area: No

Heated: No
Finished: No
Enclosed: Yes
Contiguous: Yes
Permitted: Yes
Wet space: No
Addition: No
Conversion: No

2 Floor 1 - Recreation Room

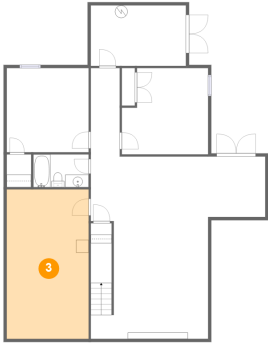


Dimensions: 27'7" x 28'10"
Area: 615 sq. ft
Counted as living area: Yes

Heated: Yes
Finished: Yes
Enclosed: Yes
Contiguous: Yes
Permitted: Yes
Wet space: No
Addition: No
Conversion: No

1865 Lees Mill Lane, Goode, Bedford County, Virginia, United States, 24556

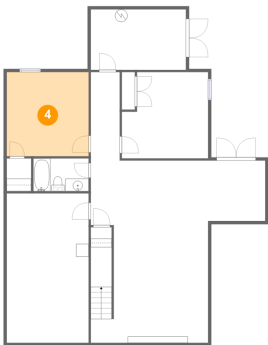
3 Floor 1 - Basement



Dimensions: 12'11" x 23'7"
Area: 306 sq. ft
Counted as living area: No

Heated: Yes
Finished: No
Enclosed: Yes
Contiguous: Yes
Permitted: Yes
Wet space: No
Addition: No
Conversion: No

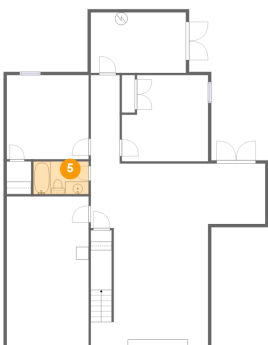
4 Floor 1 - Bedroom



Dimensions: 12'11" x 13'4"
Area: 172 sq. ft
Counted as living area: Yes

Heated: Yes
Finished: Yes
Enclosed: Yes
Contiguous: Yes
Permitted: Yes
Wet space: No
Addition: No
Conversion: No

5 Floor 1 - Bath

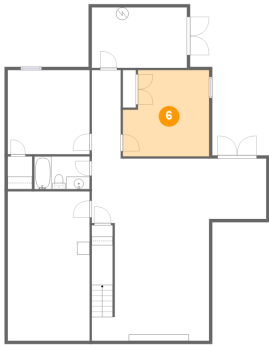


Dimensions: 8'9" x 5'2"
Area: 45 sq. ft
Counted as living area: Yes

Heated: Yes
Finished: Yes
Enclosed: Yes
Contiguous: Yes
Permitted: Yes
Wet space: Yes
Addition: No
Conversion: No

1865 Lees Mill Lane, Goode, Bedford County, Virginia, United States, 24556

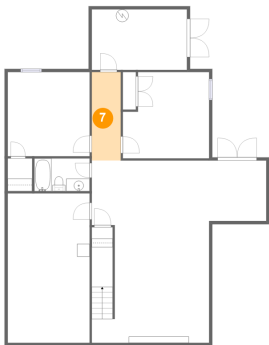
6 Floor 1 - Bedroom



Dimensions: 13'8" x 13'8"
Area: 171 sq. ft
Counted as living area: Yes

Heated: Yes
Finished: Yes
Enclosed: Yes
Contiguous: Yes
Permitted: Yes
Wet space: No
Addition: No
Conversion: No

7 Floor 1 - Hall



Dimensions: 4'7" x 14'0"
Area: 64 sq. ft
Counted as living area: Yes

Heated: Yes
Finished: Yes
Enclosed: Yes
Contiguous: Yes
Permitted: Yes
Wet space: No
Addition: No
Conversion: No

8 Floor 2 - Hall



Dimensions: 14'4" x 3'11"
Area: 56 sq. ft
Counted as living area: Yes

Heated: Yes
Finished: Yes
Enclosed: Yes
Contiguous: Yes
Permitted: Yes
Wet space: No
Addition: No
Conversion: No

9 Floor 2 - Pantry



Dimensions: 5'4" x 4'10"
Area: 23 sq. ft
Counted as living area: Yes

Heated: Yes
Finished: Yes
Enclosed: Yes
Contiguous: Yes
Permitted: Yes
Wet space: No
Addition: No
Conversion: No

10 Floor 2 - Laundry



Dimensions: 8'3" x 6'2"
Area: 50 sq. ft
Counted as living area: Yes

Heated: Yes
Finished: Yes
Enclosed: Yes
Contiguous: Yes
Permitted: Yes
Wet space: No
Addition: No
Conversion: No

11 Floor 2 - Kitchen



Dimensions: 18'7" x 14'9"
Area: 248 sq. ft
Counted as living area: Yes

Heated: Yes
Finished: Yes
Enclosed: Yes
Contiguous: Yes
Permitted: Yes
Wet space: No
Addition: No
Conversion: No

12 Floor 2 - Primary Bedroom



Dimensions: 14'0" x 17'10"
Area: 250 sq. ft
Counted as living area: Yes

Heated: Yes
Finished: Yes
Enclosed: Yes
Contiguous: Yes
Permitted: Yes
Wet space: No
Addition: No
Conversion: No

13 Floor 2 - Hall



Dimensions: 4'3" x 6'0"
Area: 25 sq. ft
Counted as living area: Yes

Heated: Yes
Finished: Yes
Enclosed: Yes
Contiguous: Yes
Permitted: Yes
Wet space: No
Addition: No
Conversion: No

14 Floor 2 - W.I.C.



Dimensions: 4'5" x 6'0"
Area: 26 sq. ft
Counted as living area: Yes

Heated: Yes
Finished: Yes
Enclosed: Yes
Contiguous: Yes
Permitted: Yes
Wet space: No
Addition: No
Conversion: No

1865 Lees Mill Lane, Goode, Bedford County, Virginia, United States, 24556

15 Floor 2 - WC



Dimensions: 3'1" x 5'3"
Area: 16 sq. ft
Counted as living area: Yes

Heated: Yes
Finished: Yes
Enclosed: Yes
Contiguous: Yes
Permitted: Yes
Wet space: Yes
Addition: No
Conversion: No

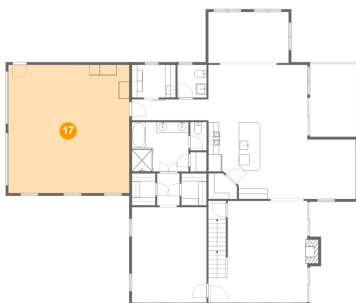
16 Floor 2 - W.I.C.



Dimensions: 4'9" x 6'0"
Area: 28 sq. ft
Counted as living area: Yes

Heated: Yes
Finished: Yes
Enclosed: Yes
Contiguous: Yes
Permitted: Yes
Wet space: No
Addition: No
Conversion: No

17 Floor 2 - Garage



Dimensions: 22'8" x 24'0"
Area: 544 sq. ft
Counted as living area: No

Heated: No
Finished: No
Enclosed: Yes
Contiguous: Yes
Permitted: Yes
Wet space: No
Addition: No
Conversion: No

1865 Lees Mill Lane, Goode, Bedford County, Virginia, United States, 24556

18 Floor 2 - Dining Area



Dimensions: 9'0" x 11'2"
Area: 101 sq. ft
Counted as living area: Yes

Heated: Yes
Finished: Yes
Enclosed: Yes
Contiguous: Yes
Permitted: Yes
Wet space: No
Addition: No
Conversion: No

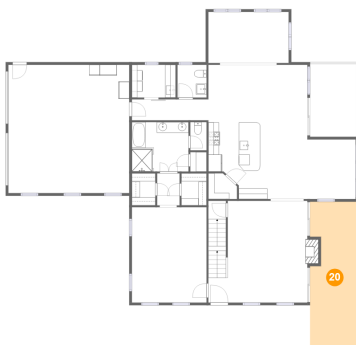
19 Floor 2 - Primary Bath



Dimensions: 10'7" x 9'3"
Area: 98 sq. ft
Counted as living area: Yes

Heated: Yes
Finished: Yes
Enclosed: Yes
Contiguous: Yes
Permitted: Yes
Wet space: Yes
Addition: No
Conversion: No

20 Floor 2 - Deck



Dimensions: 9'1" x 27'6"
Area: 238 sq. ft
Counted as living area: No

Heated: No
Finished: Yes
Enclosed: No
Contiguous: Yes
Permitted: Yes
Wet space: No
Addition: No
Conversion: No

1865 Lees Mill Lane, Goode, Bedford County, Virginia, United States, 24556

21 Floor 2 - Breakfast Area



Dimensions: 18'7" x 10'5"
Area: 193 sq. ft
Counted as living area: Yes

Heated: Yes
Finished: Yes
Enclosed: Yes
Contiguous: Yes
Permitted: Yes
Wet space: No
Addition: No
Conversion: No

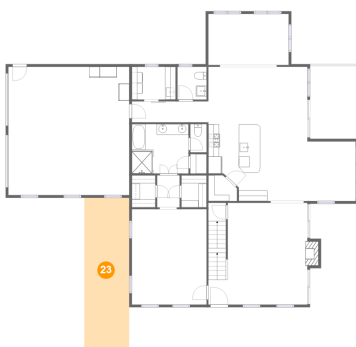
22 Floor 2 - Living Room



Dimensions: 18'7" x 19'1"
Area: 359 sq. ft
Counted as living area: Yes

Heated: Yes
Finished: Yes
Enclosed: Yes
Contiguous: Yes
Permitted: Yes
Wet space: No
Addition: No
Conversion: No

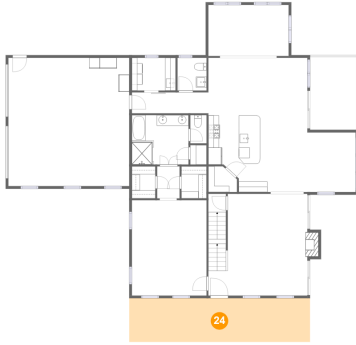
23 Floor 2 - Deck



Dimensions: 8'5" x 28'8"
Area: 241 sq. ft
Counted as living area: No

Heated: No
Finished: Yes
Enclosed: No
Contiguous: Yes
Permitted: Yes
Wet space: No
Addition: No
Conversion: No

24 Floor 2 - Porch



Dimensions: 33'11" x 8'2"
Area: 278 sq. ft
Counted as living area: No

Heated: No
Finished: Yes
Enclosed: No
Contiguous: Yes
Permitted: Yes
Wet space: No
Addition: No
Conversion: No

25 Floor 2 - Deck



Dimensions: 8'8" x 13'7"
Area: 119 sq. ft
Counted as living area: No

Heated: No
Finished: Yes
Enclosed: No
Contiguous: No
Permitted: Yes
Wet space: No
Addition: No
Conversion: No

26 Floor 2 - WC



Dimensions: 5'5" x 6'2"
Area: 33 sq. ft
Counted as living area: Yes

Heated: Yes
Finished: Yes
Enclosed: Yes
Contiguous: Yes
Permitted: Yes
Wet space: Yes
Addition: No
Conversion: No

1865 Lees Mill Lane, Goode, Bedford County, Virginia, United States, 24556

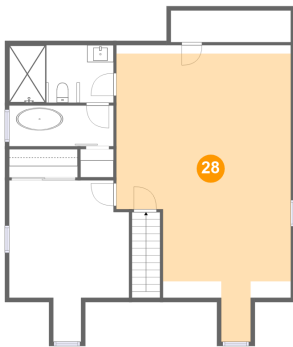
27 Floor 2 - Sunroom



Dimensions: 15'1" x 9'7"
Area: 144 sq. ft
Counted as living area: Yes

Heated: Yes
Finished: Yes
Enclosed: Yes
Contiguous: Yes
Permitted: Yes
Wet space: No
Addition: No
Conversion: No

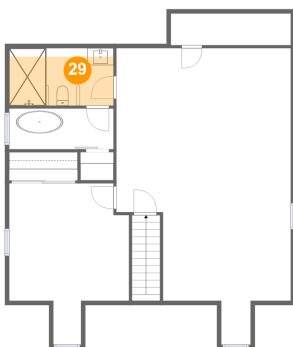
28 Floor 3 - Bonus Room



Dimensions: 20'4" x 34'7"
Area: 520 sq. ft
Counted as living area: Yes

Heated: Yes
Finished: Yes
Enclosed: Yes
Contiguous: Yes
Permitted: Yes
Wet space: No
Addition: No
Conversion: No

29 Floor 3 - Bath

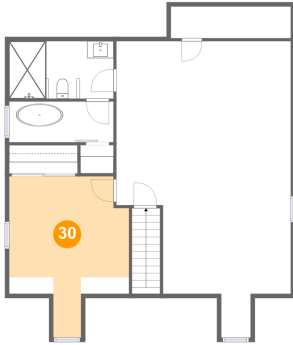


Dimensions: 12'2" x 6'9"
Area: 70 sq. ft
Counted as living area: Yes

Heated: Yes
Finished: Yes
Enclosed: Yes
Contiguous: Yes
Permitted: Yes
Wet space: Yes
Addition: No
Conversion: No

1865 Lees Mill Lane, Goode, Bedford County, Virginia, United States, 24556

30 Floor 3 - Bedroom



Dimensions: 14'0" x 18'10"
Area: 181 sq. ft
Counted as living area: Yes

Heated: Yes
Finished: Yes
Enclosed: Yes
Contiguous: Yes
Permitted: Yes
Wet space: No
Addition: No
Conversion: No

31 Floor 3 - Bath



Dimensions: 12'2" x 4'9"
Area: 58 sq. ft
Counted as living area: Yes

Heated: Yes
Finished: Yes
Enclosed: Yes
Contiguous: Yes
Permitted: Yes
Wet space: Yes
Addition: No
Conversion: No