

Home report

2343 Circle Drive Southwest, Roanoke, Virginia 24018, United States



Total Area: 2425 sq. ft

Floor 1: 661 sq. ft, Floor 2: 1764 sq. ft

Excluded: Storage 419 sq. ft, Garage 627 sq. ft, Undefined 58 sq. ft, Outdoor Patio 212 sq. ft, Fireplace 34 sq. ft, Outdoor Porch 237 sq. ft, Outdoor Deck 272 sq. ft

Property summary

 **2** Floors

 **3** Bedrooms

 **2** Bathrooms

Home report

**2343 Circle Drive Southwest, Roanoke, Virginia 24018, United States**



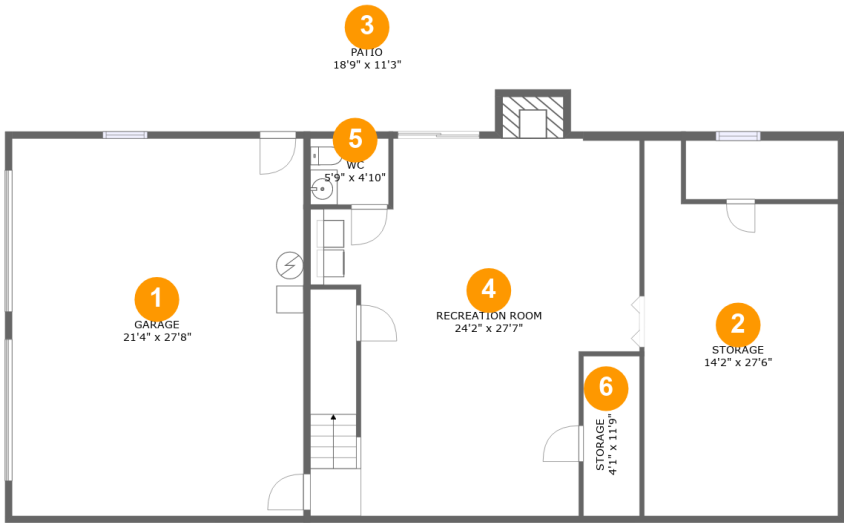
**1**  
Half baths



**1**  
Garages

Home report

2343 Circle Drive Southwest, Roanoke, Virginia 24018, United States



Room dimensions

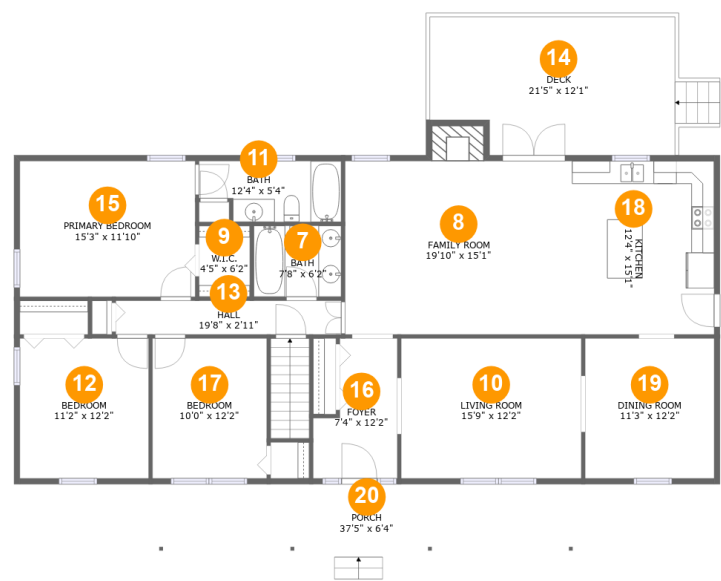
Floor 1

Total:661sqft   Excluded: 1333sqft

#		Max Dimensions	sqft	Included
1	Garage	21'4" x 27'8"	591 sq. ft	No
2	Storage	14'2" x 27'6"	337 sq. ft	No
3	Patio	18'9" x 11'3"	212 sq. ft	No
4	Recreation Room	24'2" x 27'7"	591 sq. ft	Yes
5	WC	5'9" x 4'10"	28 sq. ft	Yes
6	Storage	4'1" x 11'9"	48 sq. ft	No

Home report

2343 Circle Drive Southwest, Roanoke, Virginia 24018, United States



Room dimensions

Floor 2

Total:1764sqft

Excluded: 526sqft

#		Max Dimensions	sqft	Included
7	Bath	7'8" x 6'2"	47 sq. ft	Yes
8	Family Room	19'10" x 15'1"	313 sq. ft	Yes
9	W.I.C.	4'5" x 6'2"	27 sq. ft	Yes
10	Living Room	15'9" x 12'2"	192 sq. ft	Yes
11	Bath	12'4" x 5'4"	60 sq. ft	Yes
12	Bedroom	11'2" x 12'2"	137 sq. ft	Yes
13	Hall	19'8" x 2'11"	58 sq. ft	Yes
14	Deck	21'5" x 12'1"	272 sq. ft	No
15	Primary Bedroom	15'3" x 11'10"	181 sq. ft	Yes
16	Foyer	7'4" x 12'2"	73 sq. ft	Yes
17	Bedroom	10'0" x 12'2"	122 sq. ft	Yes

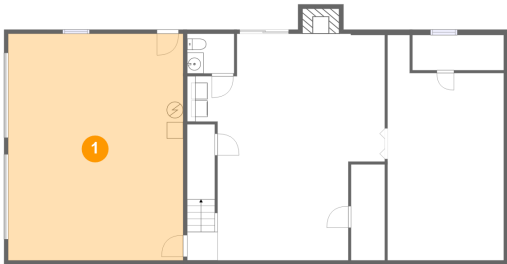
Home report

2343 Circle Drive Southwest, Roanoke, Virginia 24018, United States

#		Max Dimensions	sqft	Included
18	Kitchen	12'4" x 15'1"	187 sq. ft	Yes
19	Dining Room	11'3" x 12'2"	137 sq. ft	Yes
20	Porch	37'5" x 6'4"	237 sq. ft	No

2343 Circle Drive Southwest, Roanoke, Virginia 24018, United States

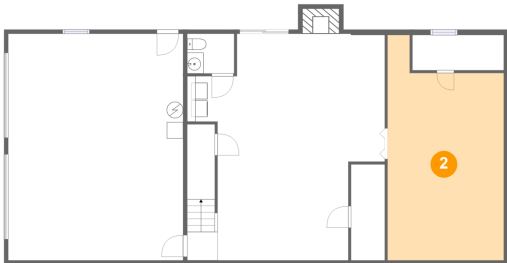
1 Floor 1 - Garage



Max Dimensions: 21'4" x 27'8"  
Calculated Area: 591 sq. ft  
Included: No

Heated: No  
Finished: No  
Enclosed: Yes  
Contiguous: Yes  
Permitted: Yes  
Wet space: No  
Addition: No  
Conversion: No

2 Floor 1 - Storage

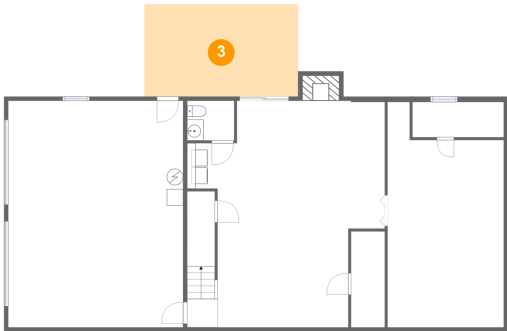


Max Dimensions: 14'2" x 27'6"  
Calculated Area: 337 sq. ft  
Included: No

Heated: No  
Finished: No  
Enclosed: No  
Contiguous: Yes  
Permitted: Yes  
Wet space: No  
Addition: No  
Conversion: No

2343 Circle Drive Southwest, Roanoke, Virginia 24018, United States

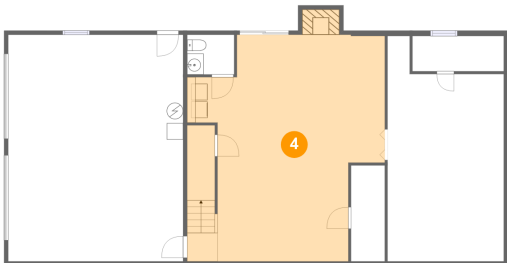
3 Floor 1 - Patio



Max Dimensions: 18'9" x 11'3"  
Calculated Area: 212 sq. ft  
Included: No

Heated: No  
Finished: Yes  
Enclosed: No  
Contiguous: Yes  
Permitted: Yes  
Wet space: No  
Addition: No  
Conversion: No

4 Floor 1 - Recreation Room



Max Dimensions: 24'2" x 27'7"  
Calculated Area: 591 sq. ft  
Included: Yes

Heated: Yes  
Finished: Yes  
Enclosed: Yes  
Contiguous: Yes  
Permitted: Yes  
Wet space: No  
Addition: No  
Conversion: No

5 Floor 1 - WC

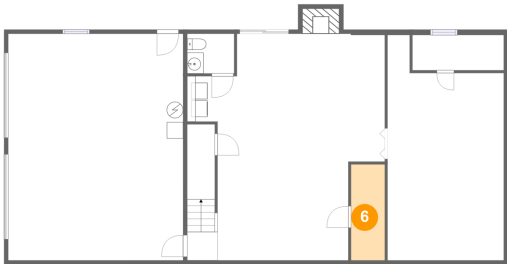


Max Dimensions: 5'9" x 4'10"  
Calculated Area: 28 sq. ft  
Included: Yes

Heated: Yes  
Finished: Yes  
Enclosed: Yes  
Contiguous: Yes  
Permitted: Yes  
Wet space: Yes  
Addition: No  
Conversion: No

2343 Circle Drive Southwest, Roanoke, Virginia 24018, United States

6 Floor 1 - Storage



Max Dimensions: 4'1" x 11'9"  
Calculated Area: 48 sq. ft  
Included: No

Heated: No  
Finished: No  
Enclosed: No  
Contiguous: Yes  
Permitted: Yes  
Wet space: No  
Addition: No  
Conversion: No

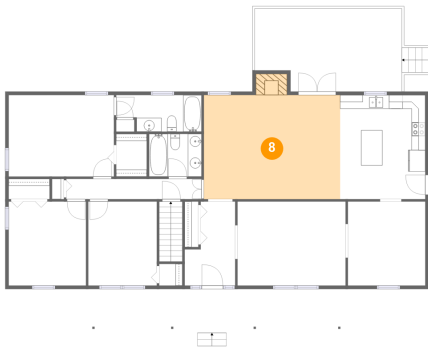
7 Floor 2 - Bath



Max Dimensions: 7'8" x 6'2"  
Calculated Area: 47 sq. ft  
Included: Yes

Heated: Yes  
Finished: Yes  
Enclosed: Yes  
Contiguous: Yes  
Permitted: Yes  
Wet space: Yes  
Addition: No  
Conversion: No

8 Floor 2 - Family Room



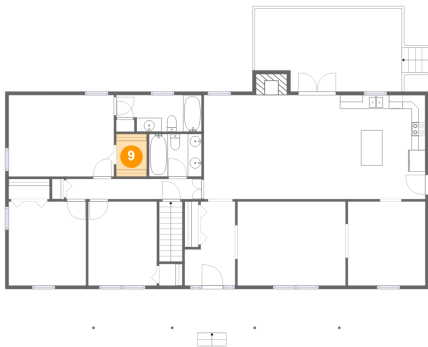
Max Dimensions: 19'10" x 15'1"  
Calculated Area: 313 sq. ft  
Included: Yes

Heated: Yes  
Finished: Yes  
Enclosed: Yes  
Contiguous: Yes  
Permitted: Yes  
Wet space: No  
Addition: No  
Conversion: No



2343 Circle Drive Southwest, Roanoke, Virginia 24018, United States

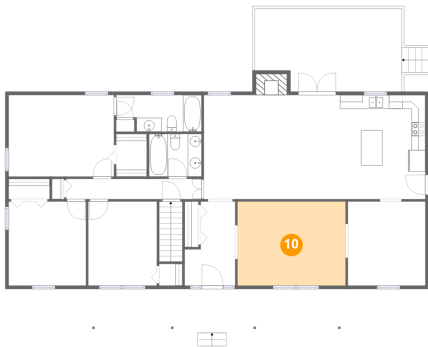
9 Floor 2 - W.I.C.



Max Dimensions: 4'5" x 6'2"  
Calculated Area: 27 sq. ft  
Included: Yes

Heated: Yes  
Finished: Yes  
Enclosed: Yes  
Contiguous: Yes  
Permitted: Yes  
Wet space: No  
Addition: No  
Conversion: No

10 Floor 2 - Living Room



Max Dimensions: 15'9" x 12'2"  
Calculated Area: 192 sq. ft  
Included: Yes

Heated: Yes  
Finished: Yes  
Enclosed: Yes  
Contiguous: Yes  
Permitted: Yes  
Wet space: No  
Addition: No  
Conversion: No

11 Floor 2 - Bath



Max Dimensions: 12'4" x 5'4"  
Calculated Area: 60 sq. ft  
Included: Yes

Heated: Yes  
Finished: Yes  
Enclosed: Yes  
Contiguous: Yes  
Permitted: Yes  
Wet space: Yes  
Addition: No  
Conversion: No

2343 Circle Drive Southwest, Roanoke, Virginia 24018, United States

12 Floor 2 - Bedroom



Max Dimensions: 11'2" x 12'2"  
Calculated Area: 137 sq. ft  
Included: Yes

Heated: Yes  
Finished: Yes  
Enclosed: Yes  
Contiguous: Yes  
Permitted: Yes  
Wet space: No  
Addition: No  
Conversion: No

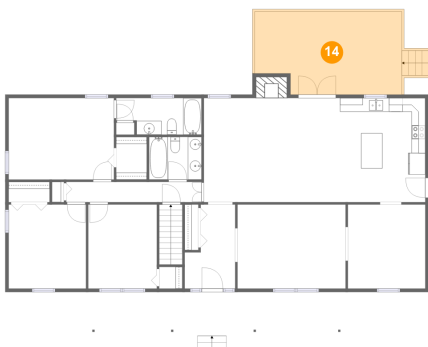
13 Floor 2 - Hall



Max Dimensions: 19'8" x 2'11"  
Calculated Area: 58 sq. ft  
Included: Yes

Heated: Yes  
Finished: Yes  
Enclosed: Yes  
Contiguous: Yes  
Permitted: Yes  
Wet space: No  
Addition: No  
Conversion: No

14 Floor 2 - Deck

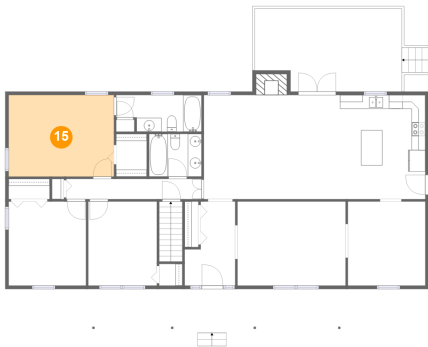


Max Dimensions: 21'5" x 12'1"  
Calculated Area: 272 sq. ft  
Included: No

Heated: No  
Finished: Yes  
Enclosed: No  
Contiguous: Yes  
Permitted: Yes  
Wet space: No  
Addition: No  
Conversion: No

2343 Circle Drive Southwest, Roanoke, Virginia 24018, United States

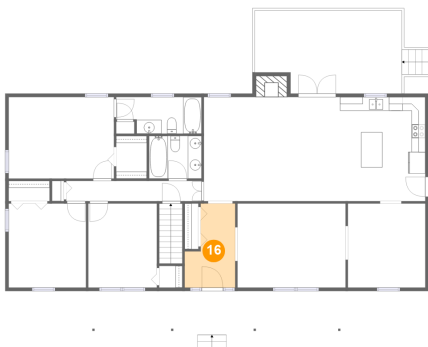
15 Floor 2 - Primary Bedroom



Max Dimensions: 15'3" x 11'10"  
Calculated Area: 181 sq. ft  
Included: Yes

Heated: Yes  
Finished: Yes  
Enclosed: Yes  
Contiguous: Yes  
Permitted: Yes  
Wet space: No  
Addition: No  
Conversion: No

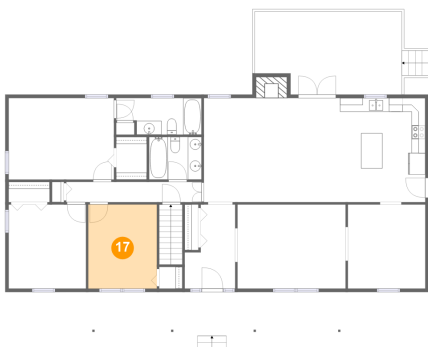
16 Floor 2 - Foyer



Max Dimensions: 7'4" x 12'2"  
Calculated Area: 73 sq. ft  
Included: Yes

Heated: Yes  
Finished: Yes  
Enclosed: Yes  
Contiguous: Yes  
Permitted: Yes  
Wet space: No  
Addition: No  
Conversion: No

17 Floor 2 - Bedroom



Max Dimensions: 10'0" x 12'2"  
Calculated Area: 122 sq. ft  
Included: Yes

Heated: Yes  
Finished: Yes  
Enclosed: Yes  
Contiguous: Yes  
Permitted: Yes  
Wet space: No  
Addition: No  
Conversion: No

2343 Circle Drive Southwest, Roanoke, Virginia 24018, United States

18 Floor 2 - Kitchen



Max Dimensions: 12'4" x 15'1"  
Calculated Area: 187 sq. ft  
Included: Yes

Heated: Yes  
Finished: Yes  
Enclosed: Yes  
Contiguous: Yes  
Permitted: Yes  
Wet space: No  
Addition: No  
Conversion: No

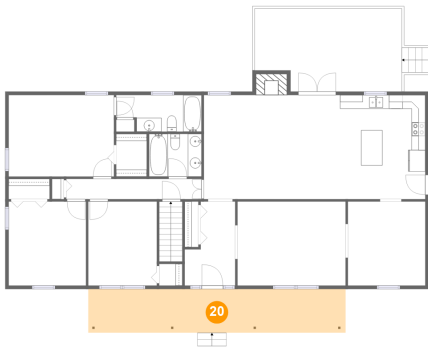
19 Floor 2 - Dining Room



Max Dimensions: 11'3" x 12'2"  
Calculated Area: 137 sq. ft  
Included: Yes

Heated: Yes  
Finished: Yes  
Enclosed: Yes  
Contiguous: Yes  
Permitted: Yes  
Wet space: No  
Addition: No  
Conversion: No

20 Floor 2 - Porch



Max Dimensions: 37'5" x 6'4"  
Calculated Area: 237 sq. ft  
Included: No

Heated: No  
Finished: Yes  
Enclosed: No  
Contiguous: Yes  
Permitted: Yes  
Wet space: No  
Addition: No  
Conversion: No