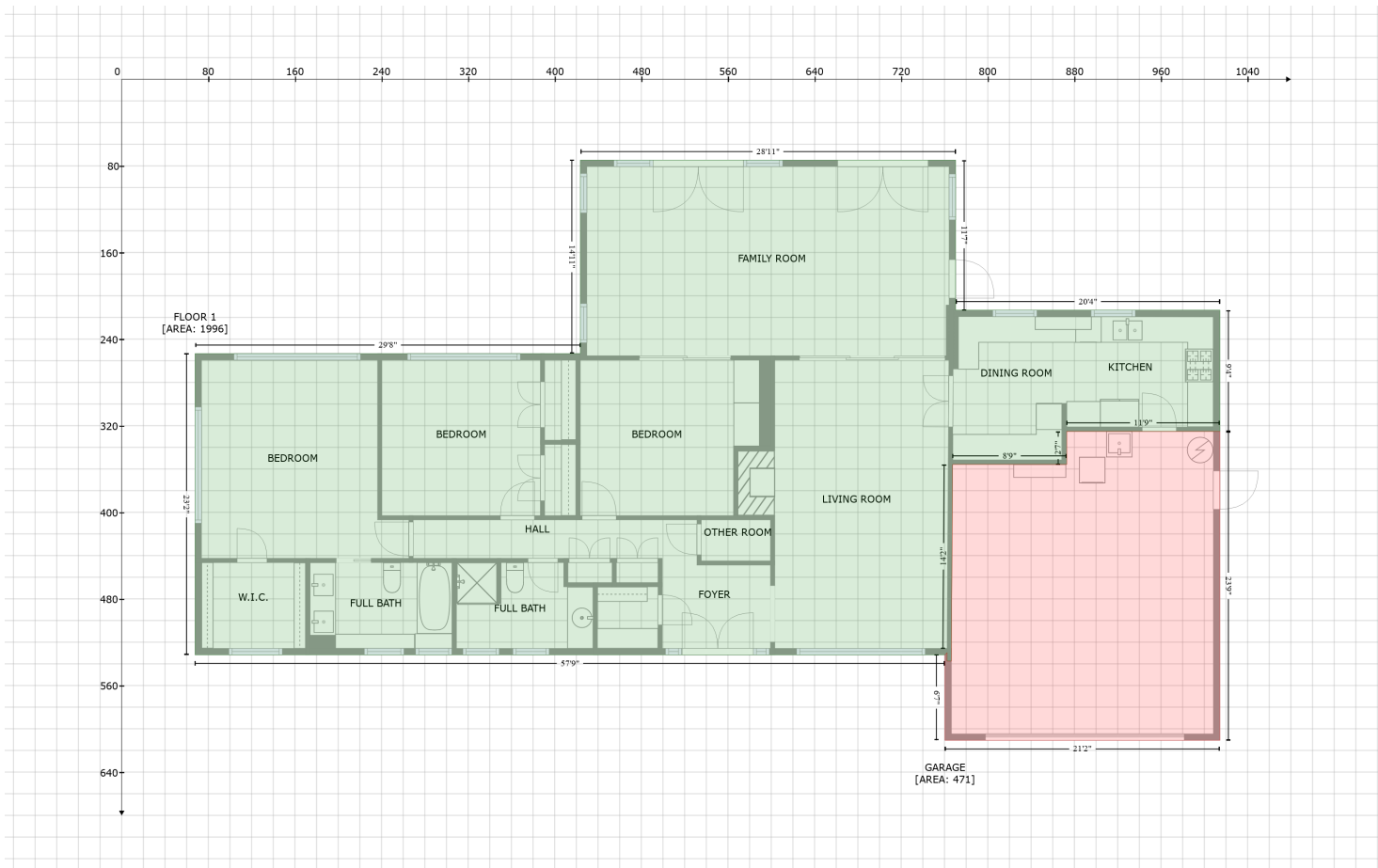


209 Ponce De Leon Boulevard, Belleair, Pinellas County, Florida, United States, 33756

Gross Living Area: 1996 sq. ft



Space	Area (sq. ft)	Calculation
FLOOR 1 (Living area)	1996	Coordinate Polygon Area Algorithm using inches $-((770.3 + 770.3) * (74.7 - 213.2) + (770.3 + 1014.4) * (213.2 - 213.2) + (1014.4 + 1014.4) * (213.2 - 325.3) + (1014.4 + 872.9) * (325.3 - 325.3) + (872.9 + 872.9) * (325.3 - 355.8) + (872.9 + 767.6) * (355.8 - 355.8) + (767.6 + 766.4) * (355.8 - 525.7) + (766.4 + 766.3) * (525.7 - 537.4) + (766.3 + 762.3) * (537.4 - 537.4) + (762.3 + 762.4) * (537.4 - 529.7) + (762.4 + 760.4) * (529.7 - 531.7) + (760.4 + 67.8) * (531.7 - 531.7) + (67.8 + 67.8) * (531.7 - 253.4) + (67.8 + 423.7) * (253.4 - 253.4) + (423.7 + 423.7) * (253.4 - 74.7) + (423.7 + 770.3) * (74.7 - 74.7)) * 0.5 * 0.00694$
GARAGE (Non-living area)	471	Coordinate Polygon Area Algorithm using inches $-((1014.4 + 1014.4) * (325.3 - 610.7) + (1014.4 + 760.4) * (610.7 - 610.7) + (760.4 + 760.4) * (610.7 - 531.7) + (760.4 + 762.4) * (531.7 - 529.7) + (762.4 + 762.3) * (529.7 - 537.4) + (762.3 + 766.3) * (537.4 - 537.4) + (766.3 + 766.4) * (537.4 - 525.7) + (766.4 + 766.4) * (525.7 - 525.7) + (766.4 + 767.6) * (525.7 - 355.8) + (767.6 + 872.9) * (355.8 - 355.8) + (872.9 + 872.9) * (355.8 - 325.3) + (872.9 + 1014.4) * (325.3 - 325.3)) * 0.5 * 0.00694$