

# 1187 Janrose Court Northwest, Concord, Cabarrus County, North Carolina, United States, 28027

Gross Living Area: 3298 sq. ft



Space	Area (sq. ft)	Calculation
FLOOR 1 (Living area)	2679	Coordinate Polygon Area Algorithm using inches $-((197.6 + 197.6) * (1.3 - 168.5) + (197.6 + 191.6) * (168.5 - 168.5) + (191.6 + 191.6) * (168.5 - 187.6) + (191.6 + 620.1) * (187.6 - 187.6) + (620.1 + 620.1) * (187.6 - 696.8) + (620.1 + 381.4) * (696.8 - 696.8) + (381.4 + 381.4) * (696.8 - 814.1) + (381.4 + 375.4) * (814.1 - 814.1) + (375.4 + 375.4) * (814.1 - 820.1) + (375.4 + 243.2) * (820.1 - 820.1) + (243.2 + 243.2) * (820.1 - 790.9) + (243.2 + 157.9) * (790.9 - 790.9) + (157.9 + 157.9) * (790.9 - 820.2) + (157.9 + 13.6) * (820.2 - 820.2) + (13.6 + 13.6) * (820.2 - 1.3) + (13.6 + 197.6) * (1.3 - 1.3)) * 0.5 * 0.00694$

# 1187 Janrose Court Northwest, Concord, Cabarrus County, North Carolina, United States, 28027

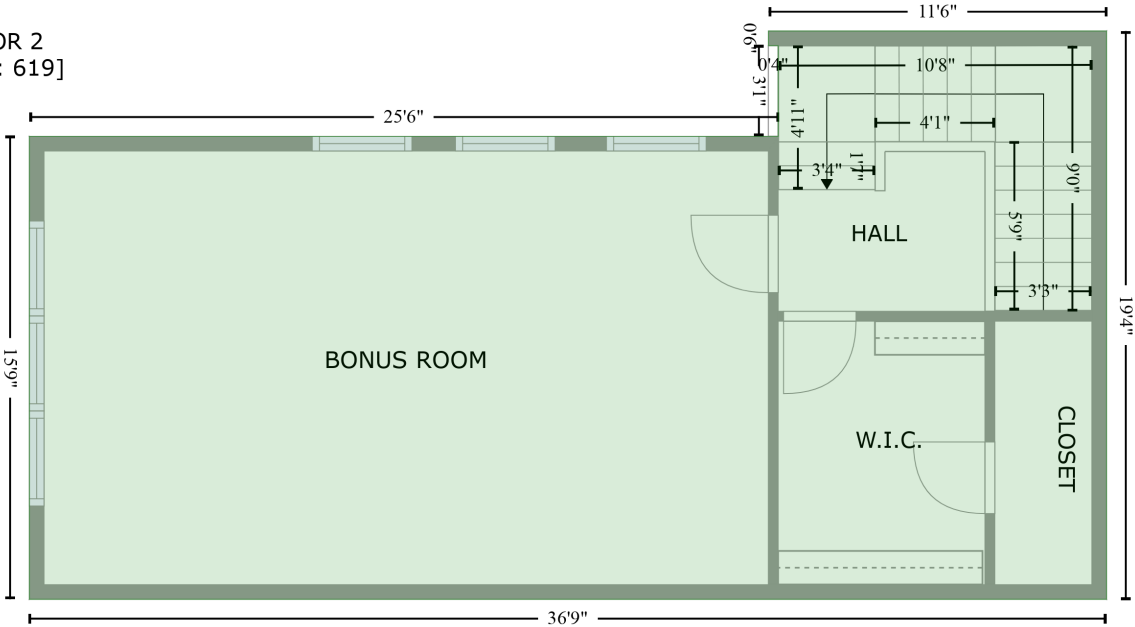
Gross Living Area: 3298 sq. ft

Space	Area (sq. ft)	Calculation <small>Coordinate Polygon Area Algorithm using inches</small>
GARAGE (Non-living area)	427	$-\left((620.1 + 620.1) * (696.8 - 950.8) + (620.1 + 375.4) * (950.8 - 950.8) + (375.4 + 375.4) * (950.8 - 814.1) + (375.4 + 381.4) * (814.1 - 814.1) + (381.4 + 381.4) * (814.1 - 696.8) + (381.4 + 620.1) * (696.8 - 696.8)\right) * 0.5 * 0.00694$
DECK (Non-living area)	192	$-\left((357.9 + 357.9) * (5.3 - 187.6) + (357.9 + 259.8) * (187.6 - 187.6) + (259.8 + 259.8) * (187.6 - 162.5) + (259.8 + 197.6) * (162.5 - 162.5) + (197.6 + 197.6) * (162.5 - 5.3) + (197.6 + 357.9) * (5.3 - 5.3)\right) * 0.5 * 0.00694$
FIREPLACE (Non-living area)	12	$-\left((259.8 + 259.8) * (162.5 - 187.6) + (259.8 + 191.6) * (187.6 - 187.6) + (191.6 + 191.6) * (187.6 - 168.5) + (191.6 + 197.6) * (168.5 - 168.5) + (197.6 + 197.6) * (168.5 - 162.5) + (197.6 + 259.8) * (162.5 - 162.5)\right) * 0.5 * 0.00694$

1187 Janrose Court Northwest, Concord, Cabarrus County, North Carolina, United States, 28027

Gross Living Area: 3298 sq. ft

FLOOR 2  
[AREA: 619]



Space	Area (sq. ft)	Calculation <small>Coordinate Polygon Area Algorithm using inches</small>
FLOOR 2 (Living area)	619	$-\left((454.3 + 454.3) * (394.2 - 626.5) + (454.3 + 13.7) * (626.5 - 626.5) + (13.7 + 13.7) * (626.5 - 437.2) + (13.7 + 320) * (437.2 - 437.2) + (320 + 320) * (437.2 - 400.2) + (320 + 316) * (400.2 - 400.2) + (316 + 316) * (400.2 - 394.2) + (316 + 454.3) * (394.2 - 394.2)\right) * 0.5 * 0.00694$