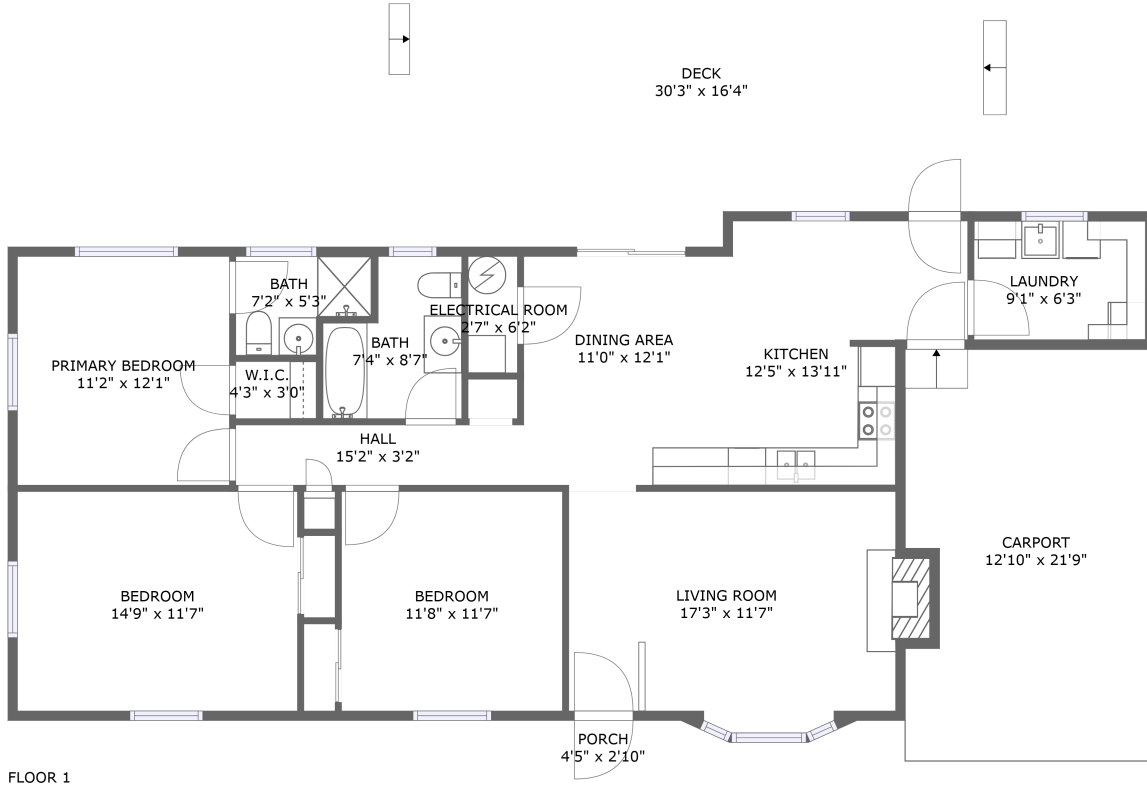



# 3167 Jae Valley Road, Parkway Meadows, Roanoke, Roanoke County, Virginia, United States, 24014



## Property summary

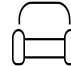
 **0** Garages

 **3** Bedrooms

 **2** Bathrooms

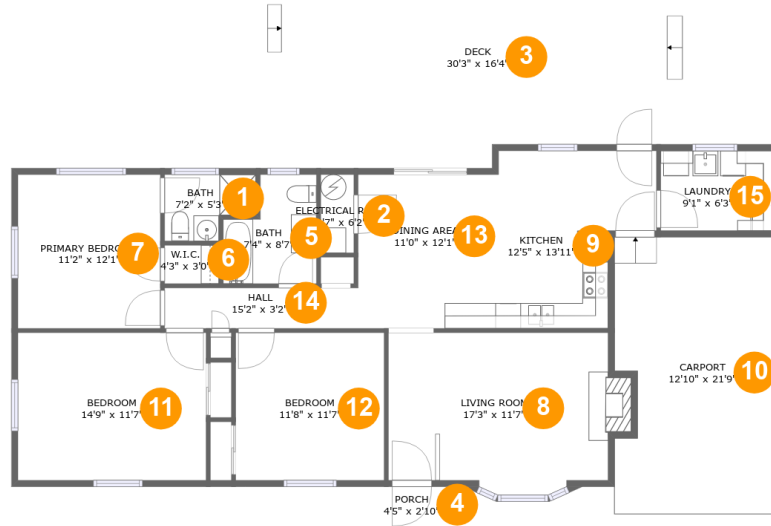
 **0** Half baths

 **1** Floors

 **1,279** Gross living area sqft

 **2,052** Total sqft

3167 Jae Valley Road, Parkway Meadows, Roanoke, Roanoke County, Virginia, United States, 24014



Room dimensions

Floor 1

Total sqft: 2052 Living area: 1279

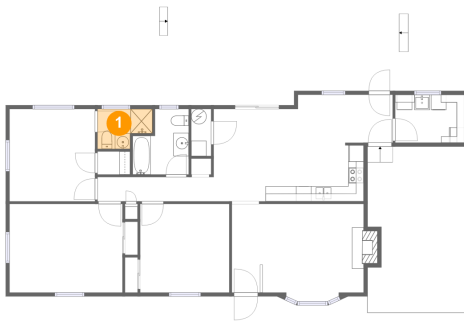
#		Dimensions	sqft	Counted as living area
1	Bath	7'2" x 5'3"	31 sq. ft	Yes
2	Electrical Room	2'7" x 6'2"	16 sq. ft	No
3	Deck	30'3" x 16'4"	456 sq. ft	No
4	Porch	4'5" x 2'10"	13 sq. ft	No
5	Bath	7'4" x 8'7"	52 sq. ft	Yes
6	W.I.C.	4'3" x 3'0"	13 sq. ft	Yes
7	Primary Bedroom	11'2" x 12'1"	135 sq. ft	Yes
8	Living Room	17'3" x 11'7"	207 sq. ft	Yes
9	Kitchen	12'5" x 13'11"	143 sq. ft	Yes
10	Carport	12'10" x 21'9"	270 sq. ft	No
11	Bedroom	14'9" x 11'7"	171 sq. ft	Yes

**3167 Jae Valley Road, Parkway Meadows, Roanoke,  
Roanoke County, Virginia, United States, 24014**

#		Dimensions	sqft	Counted as living area
12	Bedroom	11'8" x 11'7"	135 sq. ft	Yes
13	Dining Area	11'0" x 12'1"	133 sq. ft	Yes
14	Hall	15'2" x 3'2"	48 sq. ft	Yes
15	Laundry	9'1" x 6'3"	57 sq. ft	Yes

# 3167 Jae Valley Road, Parkway Meadows, Roanoke, Roanoke County, Virginia, United States, 24014

## 1 Floor 1 - Bath



Dimensions: 7'2" x 5'3"  
Area: 31 sq. ft  
Counted as living area: Yes

Heated: Yes  
Finished: Yes  
Enclosed: Yes  
Contiguous: Yes  
Permitted: Yes  
Wet space: Yes  
Addition: No  
Conversion: No

## 2 Floor 1 - Electrical Room

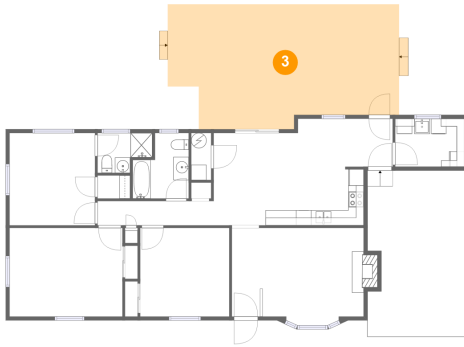


Dimensions: 2'7" x 6'2"  
Area: 16 sq. ft  
Counted as living area: No

Heated: No  
Finished: No  
Enclosed: Yes  
Contiguous: Yes  
Permitted: Yes  
Wet space: No  
Addition: No  
Conversion: No

# 3167 Jae Valley Road, Parkway Meadows, Roanoke, Roanoke County, Virginia, United States, 24014

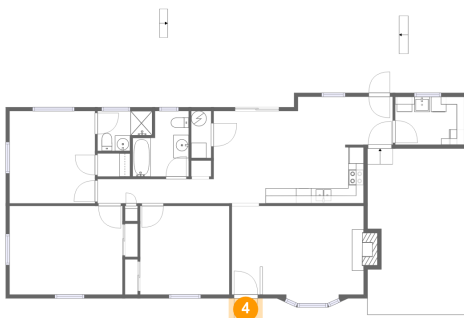
## 3 Floor 1 - Deck



Dimensions: 30'3" x 16'4"  
Area: 456 sq. ft  
Counted as living area: No

Heated: No  
Finished: Yes  
Enclosed: No  
Contiguous: Yes  
Permitted: Yes  
Wet space: No  
Addition: No  
Conversion: No

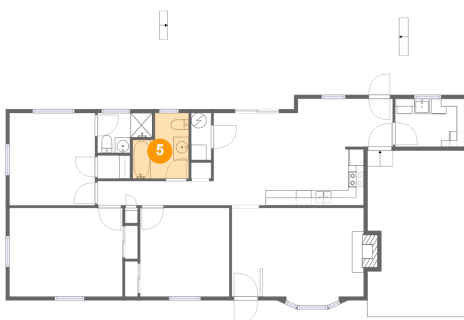
## 4 Floor 1 - Porch



Dimensions: 4'5" x 2'10"  
Area: 13 sq. ft  
Counted as living area: No

Heated: No  
Finished: Yes  
Enclosed: No  
Contiguous: Yes  
Permitted: Yes  
Wet space: No  
Addition: No  
Conversion: No

## 5 Floor 1 - Bath

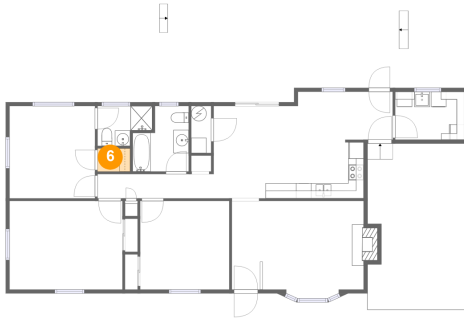


Dimensions: 7'4" x 8'7"  
Area: 52 sq. ft  
Counted as living area: Yes

Heated: Yes  
Finished: Yes  
Enclosed: Yes  
Contiguous: Yes  
Permitted: Yes  
Wet space: Yes  
Addition: No  
Conversion: No

# 3167 Jae Valley Road, Parkway Meadows, Roanoke, Roanoke County, Virginia, United States, 24014

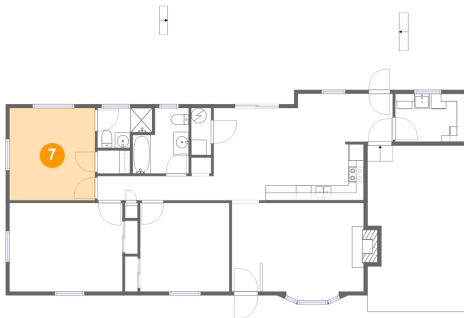
## 6 Floor 1 - W.I.C.



Dimensions: 4'3" x 3'0"  
Area: 13 sq. ft  
Counted as living area: Yes

Heated: Yes  
Finished: Yes  
Enclosed: Yes  
Contiguous: Yes  
Permitted: Yes  
Wet space: No  
Addition: No  
Conversion: No

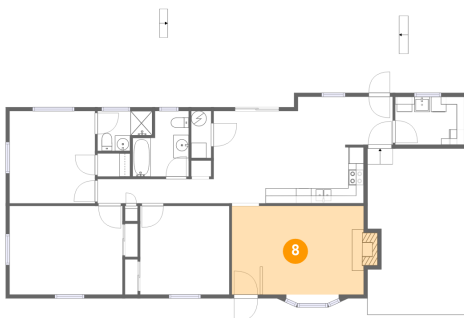
## 7 Floor 1 - Primary Bedroom



Dimensions: 11'2" x 12'1"  
Area: 135 sq. ft  
Counted as living area: Yes

Heated: Yes  
Finished: Yes  
Enclosed: Yes  
Contiguous: Yes  
Permitted: Yes  
Wet space: No  
Addition: No  
Conversion: No

## 8 Floor 1 - Living Room

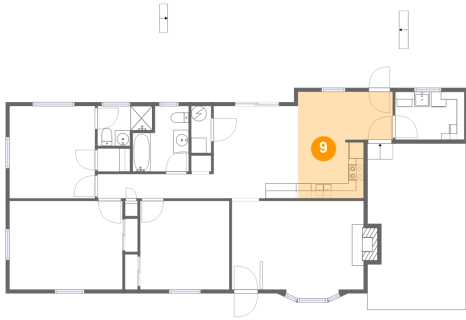


Dimensions: 17'3" x 11'7"  
Area: 207 sq. ft  
Counted as living area: Yes

Heated: Yes  
Finished: Yes  
Enclosed: Yes  
Contiguous: Yes  
Permitted: Yes  
Wet space: No  
Addition: No  
Conversion: No

# 3167 Jae Valley Road, Parkway Meadows, Roanoke, Roanoke County, Virginia, United States, 24014

## 9 Floor 1 - Kitchen



Dimensions: 12'5" x 13'11"  
Area: 143 sq. ft  
Counted as living area: Yes

Heated: Yes  
Finished: Yes  
Enclosed: Yes  
Contiguous: Yes  
Permitted: Yes  
Wet space: No  
Addition: No  
Conversion: No

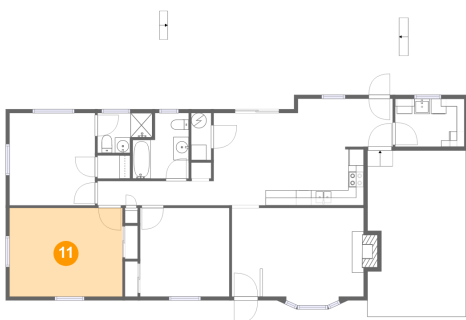
## 10 Floor 1 - Carport



Dimensions: 12'10" x 21'9"  
Area: 270 sq. ft  
Counted as living area: No

Heated: No  
Finished: Yes  
Enclosed: No  
Contiguous: Yes  
Permitted: Yes  
Wet space: No  
Addition: No  
Conversion: No

## 11 Floor 1 - Bedroom

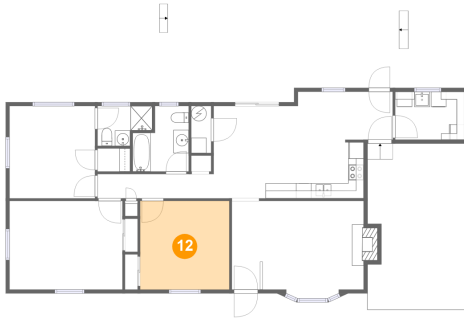


Dimensions: 14'9" x 11'7"  
Area: 171 sq. ft  
Counted as living area: Yes

Heated: Yes  
Finished: Yes  
Enclosed: Yes  
Contiguous: Yes  
Permitted: Yes  
Wet space: No  
Addition: No  
Conversion: No

# 3167 Jae Valley Road, Parkway Meadows, Roanoke, Roanoke County, Virginia, United States, 24014

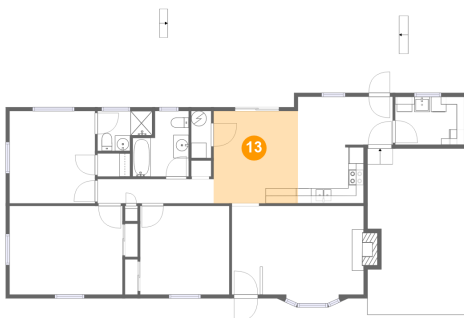
## 12 Floor 1 - Bedroom



Dimensions: 11'8" x 11'7"  
Area: 135 sq. ft  
Counted as living area: Yes

Heated: Yes  
Finished: Yes  
Enclosed: Yes  
Contiguous: Yes  
Permitted: Yes  
Wet space: No  
Addition: No  
Conversion: No

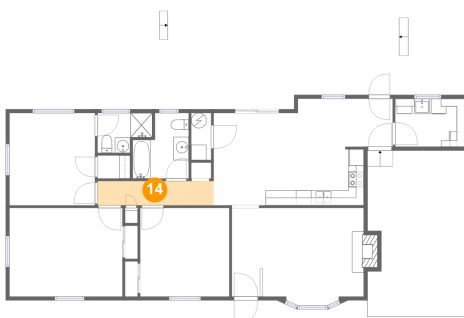
## 13 Floor 1 - Dining Area



Dimensions: 11'0" x 12'1"  
Area: 133 sq. ft  
Counted as living area: Yes

Heated: Yes  
Finished: Yes  
Enclosed: Yes  
Contiguous: Yes  
Permitted: Yes  
Wet space: No  
Addition: No  
Conversion: No

## 14 Floor 1 - Hall



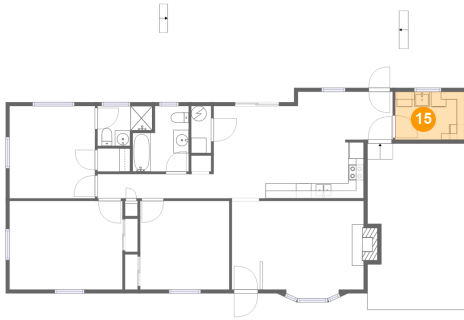
Dimensions: 15'2" x 3'2"  
Area: 48 sq. ft  
Counted as living area: Yes

Heated: Yes  
Finished: Yes  
Enclosed: Yes  
Contiguous: Yes  
Permitted: Yes  
Wet space: No  
Addition: No  
Conversion: No



**3167 Jae Valley Road, Parkway Meadows, Roanoke,  
Roanoke County, Virginia, United States, 24014**

**15 Floor 1 - Laundry**



**Dimensions: 9'1" x 6'3"**  
**Area: 57 sq. ft**  
**Counted as living area: Yes**

**Heated: Yes**  
**Finished: Yes**  
**Enclosed: Yes**  
**Contiguous: Yes**  
**Permitted: Yes**  
**Wet space: No**  
**Addition: No**  
**Conversion: No**