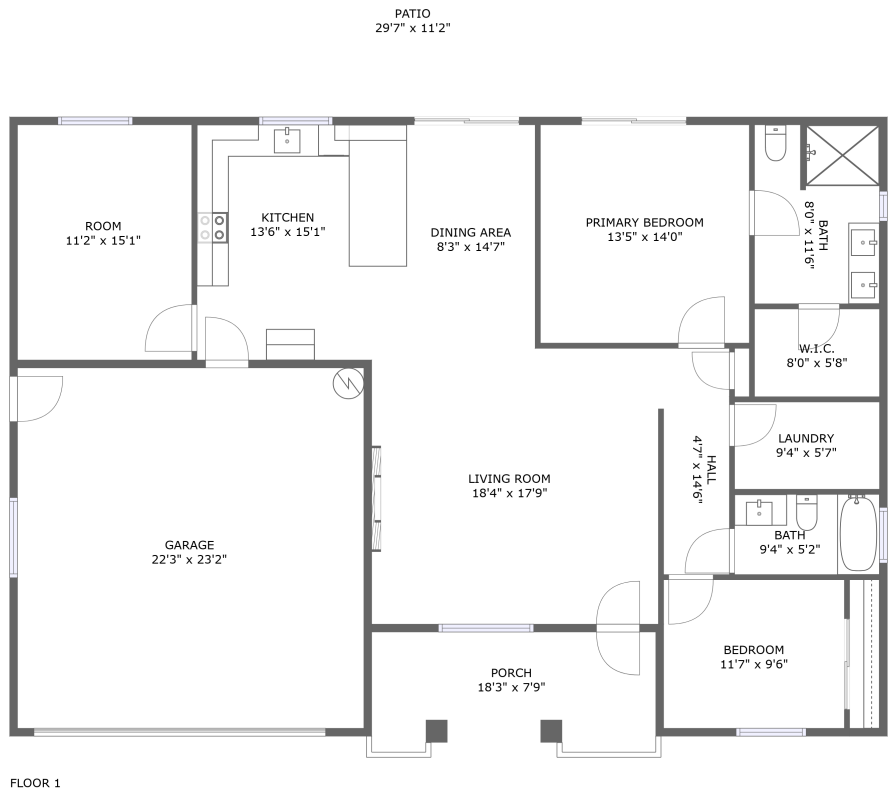


Home report

5610 North Linda Street, Pahrump, Nye County, Nevada, United States, 89060



**Total Area: 1481 sq. ft**

Floor 1: 1481 sq. ft


Excluded: Garage 515 sq. ft, Porch 141 sq. ft, Patio 264 sq. ft, Walls: 121 sq. ft

Property summary

 **1** Floors

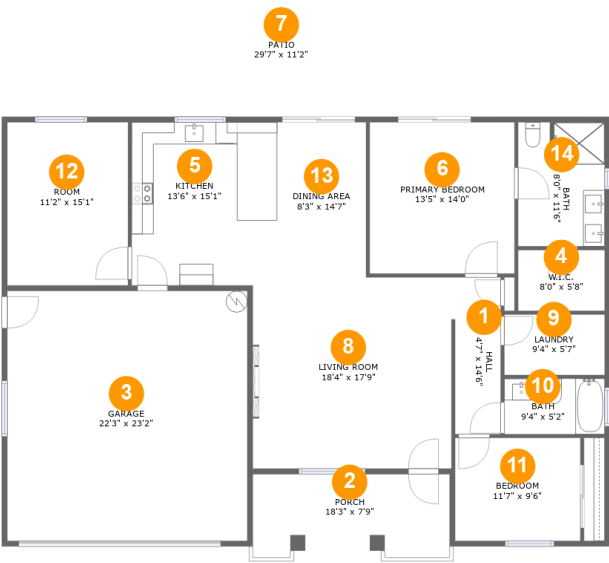
 **2** Bedrooms

 **2** Bathrooms

 **1** Garages

Home report

5610 North Linda Street, Pahrump, Nye County, Nevada, United States, 89060



Room dimensions

Floor 1 Total:1481sqft    Excluded: 920sqft

#		Max Dimensions	sqft	Included
1	Hall	4'7" x 14'6"	63 sq. ft	Yes
2	Porch	18'3" x 7'9"	141 sq. ft	No
3	Garage	22'3" x 23'2"	515 sq. ft	No
4	W.I.C.	8'0" x 5'8"	45 sq. ft	Yes
5	Kitchen	13'6" x 15'1"	203 sq. ft	Yes
6	Primary Bedroom	13'5" x 14'0"	188 sq. ft	Yes
7	Patio	29'7" x 11'2"	264 sq. ft	No
8	Living Room	18'4" x 17'9"	321 sq. ft	Yes
9	Laundry	9'4" x 5'7"	52 sq. ft	Yes
10	Bath	9'4" x 5'2"	48 sq. ft	Yes
11	Bedroom	11'7" x 9'6"	111 sq. ft	Yes

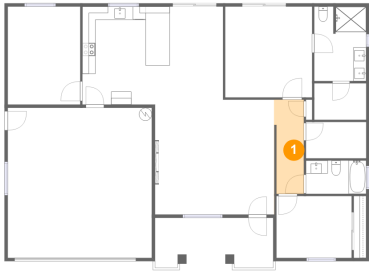
Home report

5610 North Linda Street, Pahrump, Nye County, Nevada, United States, 89060

#		Max Dimensions	sqft	Included
12	Room	11'2" x 15'1"	169 sq. ft	Yes
13	Dining Area	8'3" x 14'7"	121 sq. ft	Yes
14	Bath	8'0" x 11'6"	91 sq. ft	Yes

5610 North Linda Street, Pahrump, Nye County, Nevada, United States, 89060

1 Floor 1 - Hall



Max Dimensions: 4'7" x 14'6"  
Calculated Area: 63 sq. ft  
Included: Yes

Heated: Yes  
Finished: Yes  
Enclosed: Yes  
Contiguous: Yes  
Permitted: Yes  
Wet space: No  
Addition: No  
Conversion: No

2 Floor 1 - Porch

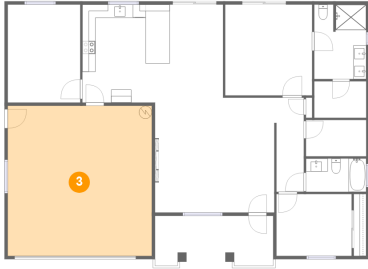


Max Dimensions: 18'3" x 7'9"  
Calculated Area: 141 sq. ft  
Included: No

Heated: No  
Finished: Yes  
Enclosed: No  
Contiguous: Yes  
Permitted: Yes  
Wet space: No  
Addition: No  
Conversion: No

5610 North Linda Street, Pahrump, Nye County, Nevada, United States, 89060

### 3 Floor 1 - Garage



Max Dimensions: 22'3" x 23'2"  
Calculated Area: 515 sq. ft  
Included: No

Heated: No  
Finished: No  
Enclosed: Yes  
Contiguous: Yes  
Permitted: Yes  
Wet space: No  
Addition: No  
Conversion: No

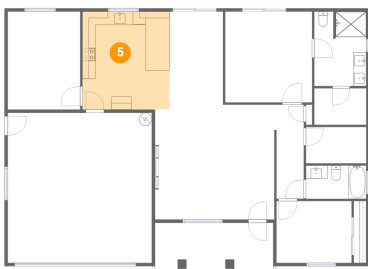
### 4 Floor 1 - W.I.C.



Max Dimensions: 8'0" x 5'8"  
Calculated Area: 45 sq. ft  
Included: Yes

Heated: Yes  
Finished: Yes  
Enclosed: Yes  
Contiguous: Yes  
Permitted: Yes  
Wet space: No  
Addition: No  
Conversion: No

### 5 Floor 1 - Kitchen

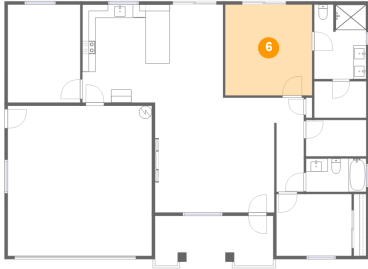


Max Dimensions: 13'6" x 15'1"  
Calculated Area: 203 sq. ft  
Included: Yes

Heated: Yes  
Finished: Yes  
Enclosed: Yes  
Contiguous: Yes  
Permitted: Yes  
Wet space: No  
Addition: No  
Conversion: No

5610 North Linda Street, Pahrump, Nye County, Nevada, United States, 89060

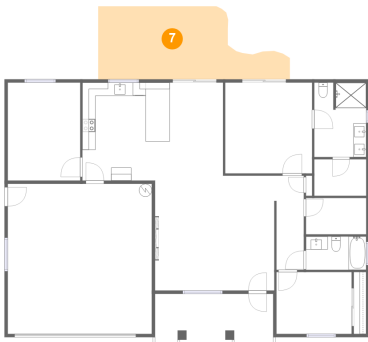
## 6 Floor 1 - Primary Bedroom



Max Dimensions: 13'5" x 14'0"  
Calculated Area: 188 sq. ft  
Included: Yes

Heated: Yes  
Finished: Yes  
Enclosed: Yes  
Contiguous: Yes  
Permitted: Yes  
Wet space: No  
Addition: No  
Conversion: No

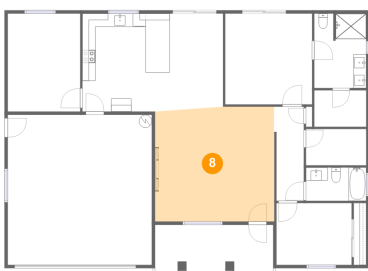
## 7 Floor 1 - Patio



Max Dimensions: 29'7" x 11'2"  
Calculated Area: 264 sq. ft  
Included: No

Heated: No  
Finished: Yes  
Enclosed: No  
Contiguous: Yes  
Permitted: Yes  
Wet space: No  
Addition: No  
Conversion: No

## 8 Floor 1 - Living Room



Max Dimensions: 18'4" x 17'9"  
Calculated Area: 321 sq. ft  
Included: Yes

Heated: Yes  
Finished: Yes  
Enclosed: Yes  
Contiguous: Yes  
Permitted: Yes  
Wet space: No  
Addition: No  
Conversion: No

5610 North Linda Street, Pahrump, Nye County, Nevada, United States, 89060

## 9 Floor 1 - Laundry



Max Dimensions: 9'4" x 5'7"  
Calculated Area: 52 sq. ft  
Included: Yes

Heated: Yes  
Finished: Yes  
Enclosed: Yes  
Contiguous: Yes  
Permitted: Yes  
Wet space: No  
Addition: No  
Conversion: No

## 10 Floor 1 - Bath



Max Dimensions: 9'4" x 5'2"  
Calculated Area: 48 sq. ft  
Included: Yes

Heated: Yes  
Finished: Yes  
Enclosed: Yes  
Contiguous: Yes  
Permitted: Yes  
Wet space: Yes  
Addition: No  
Conversion: No

## 11 Floor 1 - Bedroom



Max Dimensions: 11'7" x 9'6"  
Calculated Area: 111 sq. ft  
Included: Yes

Heated: Yes  
Finished: Yes  
Enclosed: Yes  
Contiguous: Yes  
Permitted: Yes  
Wet space: No  
Addition: No  
Conversion: No

5610 North Linda Street, Pahrump, Nye County, Nevada, United States, 89060

12 Floor 1 - Room



Max Dimensions: 11'2" x 15'1"  
Calculated Area: 169 sq. ft  
Included: Yes

Heated: Yes  
Finished: Yes  
Enclosed: Yes  
Contiguous: Yes  
Permitted: Yes  
Wet space: No  
Addition: No  
Conversion: No

13 Floor 1 - Dining Area



Max Dimensions: 8'3" x 14'7"  
Calculated Area: 121 sq. ft  
Included: Yes

Heated: Yes  
Finished: Yes  
Enclosed: Yes  
Contiguous: Yes  
Permitted: Yes  
Wet space: No  
Addition: No  
Conversion: No

14 Floor 1 - Bath



Max Dimensions: 8'0" x 11'6"  
Calculated Area: 91 sq. ft  
Included: Yes

Heated: Yes  
Finished: Yes  
Enclosed: Yes  
Contiguous: Yes  
Permitted: Yes  
Wet space: Yes  
Addition: No  
Conversion: No