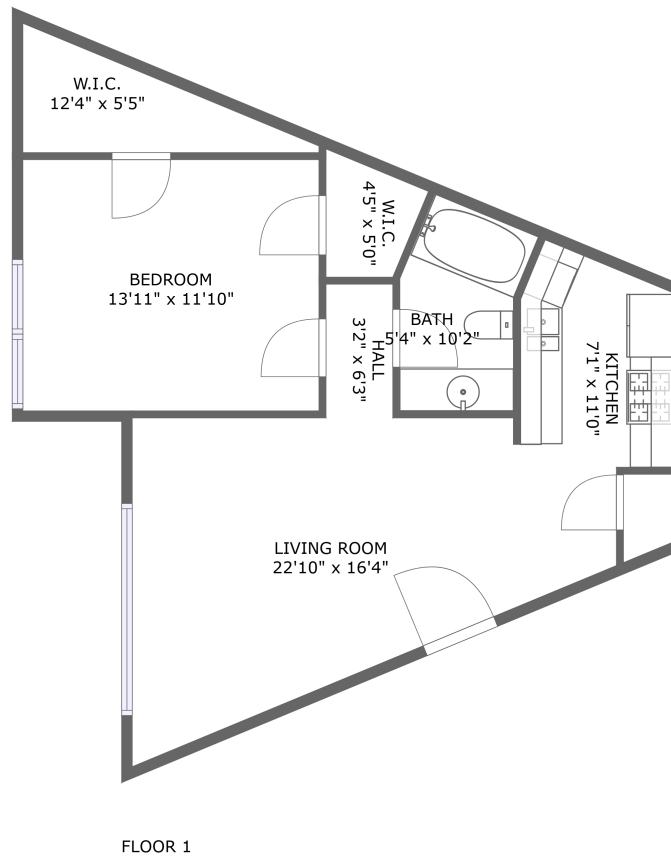


2035 4th Street, Ocean Park, Santa Monica, Los Angeles County, California, United States, 90405,



Property summary

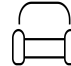
 **0** Garages


 **1** Bedrooms

 **1** Bathrooms

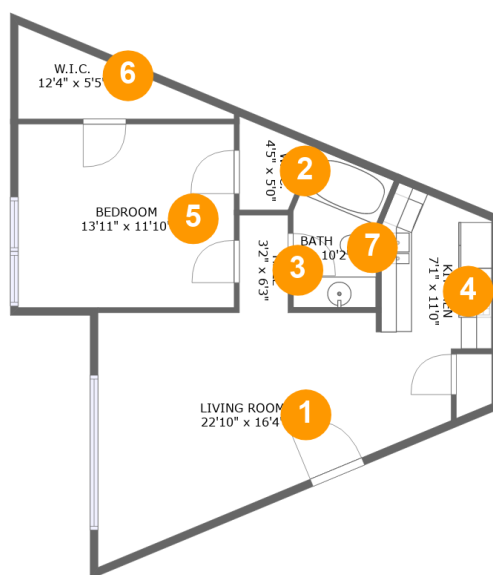
 **0** Half baths

 **1** Floors

 **657** Gross living area sqft

 **657** Total sqft

2035 4th Street, Ocean Park, Santa Monica, Los Angeles County, California, United States, 90405,



Room dimensions

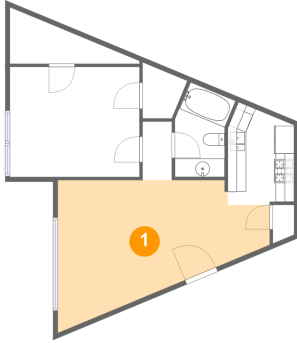
Floor 1

Total sqft: 657 Living area: 657

#		Dimensions	sqft	Counted as living area
1	Living Room	22'10" x 16'4"	254 sq. ft	Yes
2	Cl	4'5" x 5'0"	21 sq. ft	Yes
3	Hall	3'2" x 6'3"	20 sq. ft	Yes
4	Kitchen	7'1" x 11'0"	69 sq. ft	Yes
5	Bedroom	13'11" x 11'10"	165 sq. ft	Yes
6	Cl	12'4" x 5'5"	44 sq. ft	Yes
7	Bath	5'4" x 10'2"	50 sq. ft	Yes

2035 4th Street, Ocean Park, Santa Monica, Los Angeles County, California, United States, 90405,

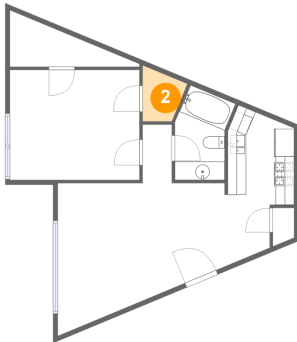
1 Floor 1 - Living Room



Dimensions: 22'10" x 16'4"
Area: 254 sq. ft
Counted as living area: Yes

Heated: Yes
Finished: Yes
Enclosed: Yes
Contiguous: Yes
Permitted: Yes
Wet space: No
Addition: No
Conversion: No

2 Floor 1 - Cl

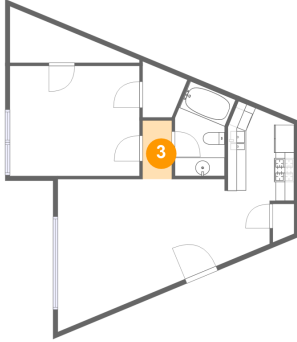


Dimensions: 4'5" x 5'0"
Area: 21 sq. ft
Counted as living area: Yes

Heated: Yes
Finished: Yes
Enclosed: Yes
Contiguous: Yes
Permitted: Yes
Wet space: No
Addition: No
Conversion: No

2035 4th Street, Ocean Park, Santa Monica, Los Angeles County, California, United States, 90405,

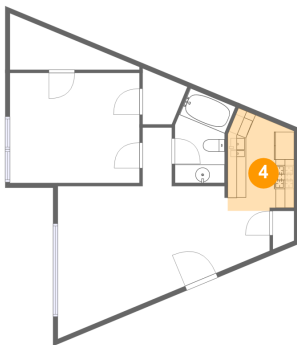
3 Floor 1 - Hall



Dimensions: 3'2" x 6'3"
Area: 20 sq. ft
Counted as living area: Yes

Heated: Yes
Finished: Yes
Enclosed: Yes
Contiguous: Yes
Permitted: Yes
Wet space: No
Addition: No
Conversion: No

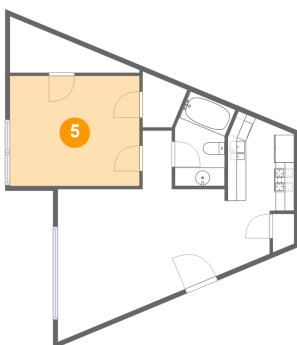
4 Floor 1 - Kitchen



Dimensions: 7'1" x 11'0"
Area: 69 sq. ft
Counted as living area: Yes

Heated: Yes
Finished: Yes
Enclosed: Yes
Contiguous: Yes
Permitted: Yes
Wet space: No
Addition: No
Conversion: No

5 Floor 1 - Bedroom

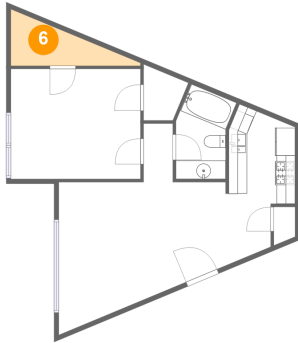


Dimensions: 13'11" x 11'10"
Area: 165 sq. ft
Counted as living area: Yes

Heated: Yes
Finished: Yes
Enclosed: Yes
Contiguous: Yes
Permitted: Yes
Wet space: No
Addition: No
Conversion: No

2035 4th Street, Ocean Park, Santa Monica, Los Angeles County, California, United States, 90405,

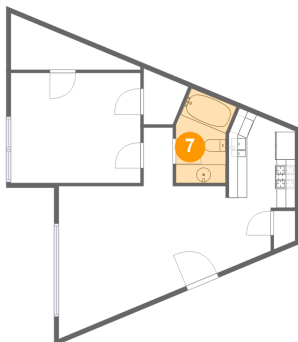
6 Floor 1 - Cl



Dimensions: 12'4" x 5'5"
Area: 44 sq. ft
Counted as living area: Yes

Heated: Yes
Finished: Yes
Enclosed: Yes
Contiguous: Yes
Permitted: Yes
Wet space: No
Addition: No
Conversion: No

7 Floor 1 - Bath



Dimensions: 5'4" x 10'2"
Area: 50 sq. ft
Counted as living area: Yes

Heated: Yes
Finished: Yes
Enclosed: Yes
Contiguous: Yes
Permitted: Yes
Wet space: Yes
Addition: No
Conversion: No