



Home report


3 Crantham Crescent, Stittsville, Old Stittsville, Stittsville,  
Ontario, Canada, K2S 1R2




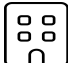
Property summary


 **1** Garages


 **4** Bedrooms

 **2** Bathrooms

 **1** Half baths

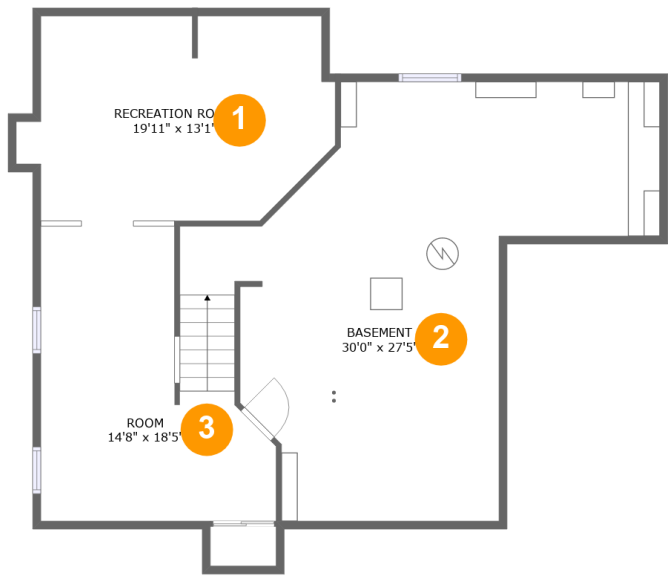
 **3** Floors

 **3,018** Gross living area sqft

 **3,962** Total sqft

Home report

3 Crantham Crescent, Stittsville, Old Stittsville, Stittsville,  
Ontario, Canada, K2S 1R2



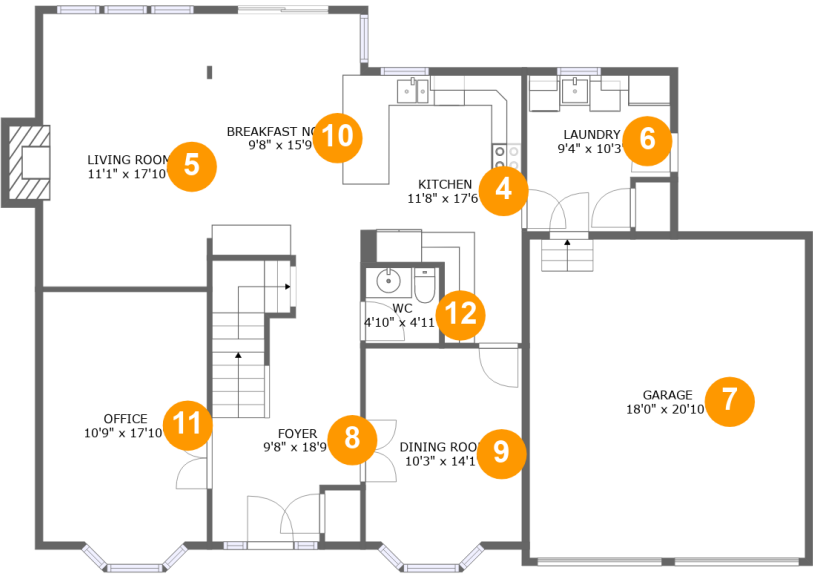
Room dimensions

Floor 1 Total sqft: 1044    Living area: 513

#		Max Dimensions	sqft	Included
1	Recreation Room	19'11" x 13'1"	226 sq. ft	Yes
2	Basement	30'0" x 27'5"	495 sq. ft	No
3	Room	14'8" x 18'5"	221 sq. ft	Yes

Home report

3 Crantham Crescent, Stittsville, Old Stittsville, Stittsville,  
Ontario, Canada, K2S 1R2



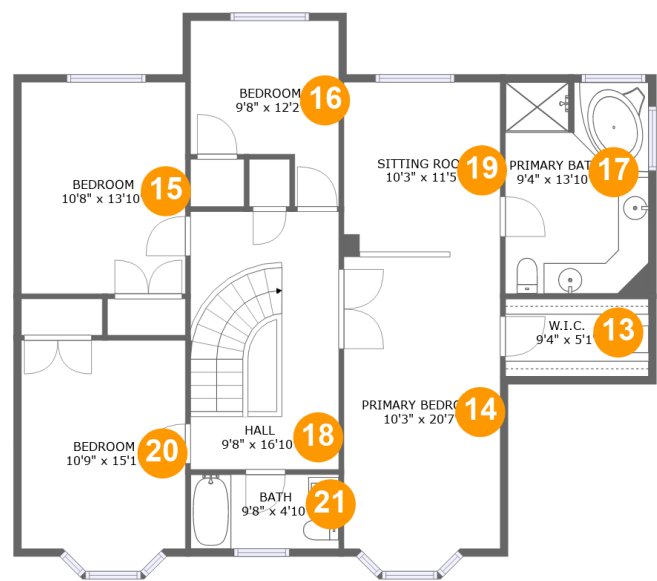
Room dimensions

Floor 2 Total sqft: 1644    Living area: 1231

#		Max Dimensions	sqft	Included
4	Kitchen	11'8" x 17'6"	164 sq. ft	Yes
5	Living Room	11'1" x 17'10"	207 sq. ft	Yes
6	Laundry	9'4" x 10'3"	87 sq. ft	Yes
7	Garage	18'0" x 20'10"	376 sq. ft	No
8	Foyer	9'8" x 18'9"	167 sq. ft	Yes
9	Dining Room	10'3" x 14'1"	137 sq. ft	Yes
10	Breakfast Nook	9'8" x 15'9"	145 sq. ft	Yes
11	Office	10'9" x 17'10"	183 sq. ft	Yes
12	WC	4'10" x 4'11"	24 sq. ft	Yes

Home report

3 Crantham Crescent, Stittsville, Old Stittsville, Stittsville,  
Ontario, Canada, K2S 1R2



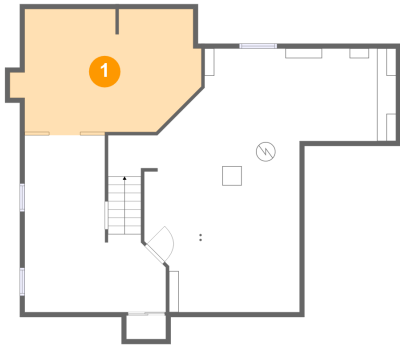
Room dimensions

Floor 3 Total sqft: 1274    Living area: 1274

#		Max Dimensions	sqft	Included
13	W.I.C.	9'4" x 5'1"	48 sq. ft	Yes
14	Primary Bedroom	10'3" x 20'7"	203 sq. ft	Yes
15	Bedroom	10'8" x 13'10"	148 sq. ft	Yes
16	Bedroom	9'8" x 12'2"	95 sq. ft	Yes
17	Primary Bath	9'4" x 13'10"	128 sq. ft	Yes
18	Hall	9'8" x 16'10"	163 sq. ft	Yes
19	Sitting Room	10'3" x 11'5"	117 sq. ft	Yes
20	Bedroom	10'9" x 15'1"	154 sq. ft	Yes
21	Bath	9'8" x 4'10"	47 sq. ft	Yes

3 Crantham Crescent, Stittsville, Old Stittsville, Stittsville,  
Ontario, Canada, K2S 1R2

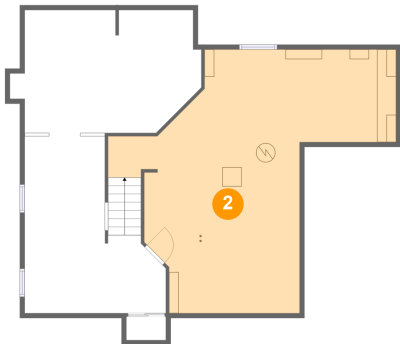
1 Floor 1 - Recreation Room



Max Dimensions: 19'11" x 13'1"  
Calculated Area: 226 sq. ft  
Included: Yes

Heated: Yes  
Finished: Yes  
Enclosed: Yes  
Contiguous: Yes  
Permitted: Yes  
Wet space: No  
Addition: No  
Conversion: No

2 Floor 1 - Basement

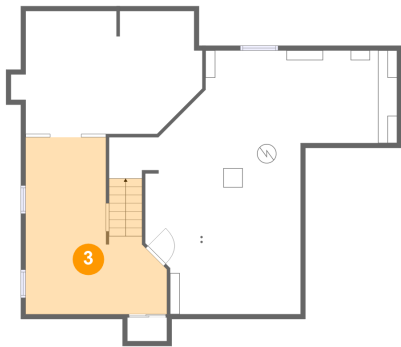


Max Dimensions: 30'0" x 27'5"  
Calculated Area: 495 sq. ft  
Included: No

Heated: Yes  
Finished: No  
Enclosed: Yes  
Contiguous: Yes  
Permitted: Yes  
Wet space: No  
Addition: No  
Conversion: No

3 Crantham Crescent, Stittsville, Old Stittsville, Stittsville,  
Ontario, Canada, K2S 1R2

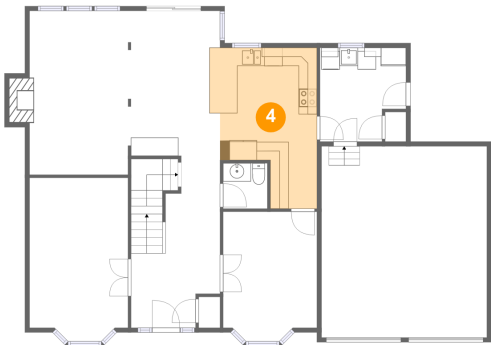
3 Floor 1 - Room



Max Dimensions: 14'8" x 18'5"  
Calculated Area: 221 sq. ft  
Included: Yes

Heated: Yes  
Finished: Yes  
Enclosed: Yes  
Contiguous: Yes  
Permitted: Yes  
Wet space: No  
Addition: No  
Conversion: No

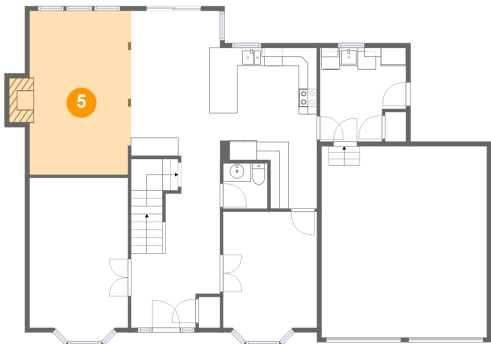
4 Floor 2 - Kitchen



Max Dimensions: 11'8" x 17'6"  
Calculated Area: 164 sq. ft  
Included: Yes

Heated: Yes  
Finished: Yes  
Enclosed: Yes  
Contiguous: Yes  
Permitted: Yes  
Wet space: No  
Addition: No  
Conversion: No

5 Floor 2 - Living Room

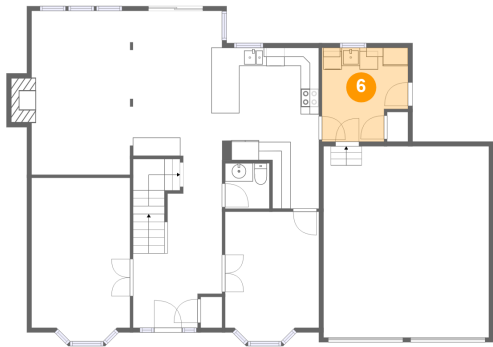


Max Dimensions: 11'1" x 17'10"  
Calculated Area: 207 sq. ft  
Included: Yes

Heated: Yes  
Finished: Yes  
Enclosed: Yes  
Contiguous: Yes  
Permitted: Yes  
Wet space: No  
Addition: No  
Conversion: No

3 Crantham Crescent, Stittsville, Old Stittsville, Stittsville,  
Ontario, Canada, K2S 1R2

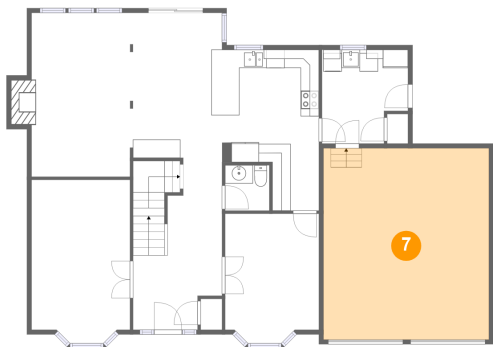
6 Floor 2 - Laundry



Max Dimensions: 9'4" x 10'3"  
Calculated Area: 87 sq. ft  
Included: Yes

Heated: Yes  
Finished: Yes  
Enclosed: Yes  
Contiguous: Yes  
Permitted: Yes  
Wet space: No  
Addition: No  
Conversion: No

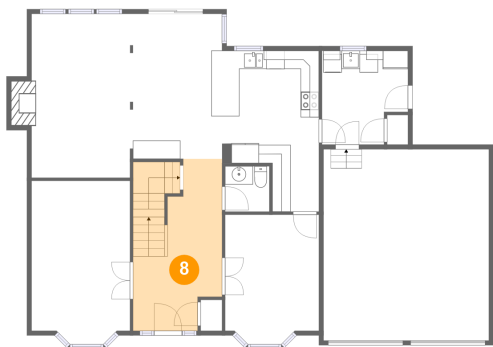
7 Floor 2 - Garage



Max Dimensions: 18'0" x 20'10"  
Calculated Area: 376 sq. ft  
Included: No

Heated: No  
Finished: No  
Enclosed: Yes  
Contiguous: Yes  
Permitted: Yes  
Wet space: No  
Addition: No  
Conversion: No

8 Floor 2 - Foyer



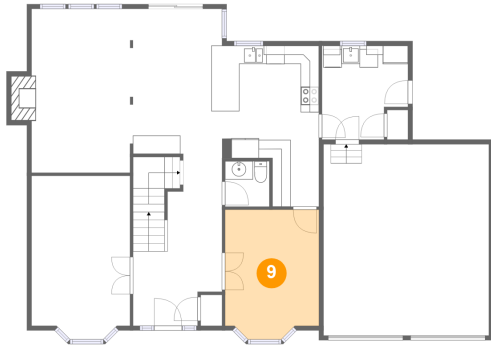
Max Dimensions: 9'8" x 18'9"  
Calculated Area: 167 sq. ft  
Included: Yes

Heated: Yes  
Finished: Yes  
Enclosed: Yes  
Contiguous: Yes  
Permitted: Yes  
Wet space: No  
Addition: No  
Conversion: No

3 Crantham Crescent, Stittsville, Old Stittsville, Stittsville,  
Ontario, Canada, K2S 1R2

**9** Floor 2 - Dining Room

---

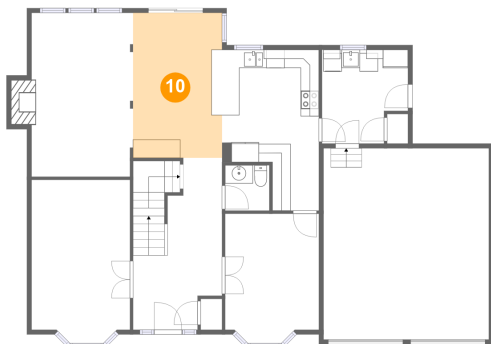


Max Dimensions: 10'3" x 14'1"  
Calculated Area: 137 sq. ft  
Included: Yes

Heated: Yes  
Finished: Yes  
Enclosed: Yes  
Contiguous: Yes  
Permitted: Yes  
Wet space: No  
Addition: No  
Conversion: No

**10** Floor 2 - Breakfast Nook

---

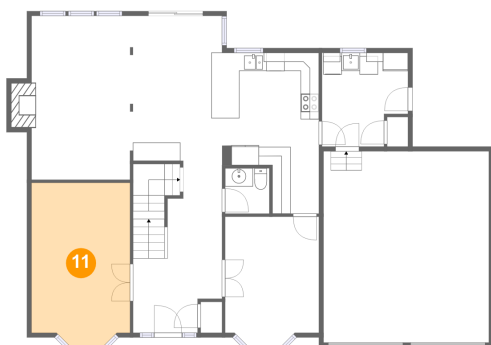


Max Dimensions: 9'8" x 15'9"  
Calculated Area: 145 sq. ft  
Included: Yes

Heated: Yes  
Finished: Yes  
Enclosed: Yes  
Contiguous: Yes  
Permitted: Yes  
Wet space: No  
Addition: No  
Conversion: No

**11** Floor 2 - Office

---



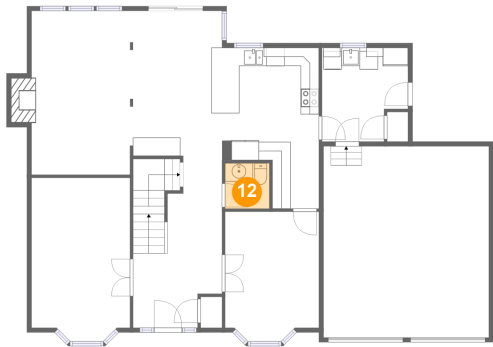
Max Dimensions: 10'9" x 17'10"  
Calculated Area: 183 sq. ft  
Included: Yes

Heated: Yes  
Finished: Yes  
Enclosed: Yes  
Contiguous: Yes  
Permitted: Yes  
Wet space: No  
Addition: No  
Conversion: No



3 Crantham Crescent, Stittsville, Old Stittsville, Stittsville,  
Ontario, Canada, K2S 1R2

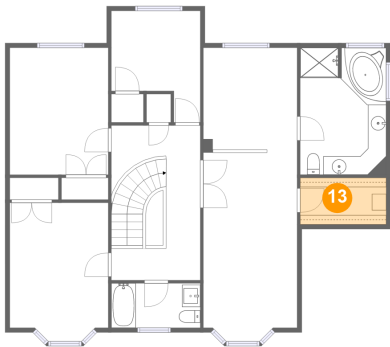
12 Floor 2 - WC



Max Dimensions: 4'10" x 4'11"  
Calculated Area: 24 sq. ft  
Included: Yes

Heated: Yes  
Finished: Yes  
Enclosed: Yes  
Contiguous: Yes  
Permitted: Yes  
Wet space: Yes  
Addition: No  
Conversion: No

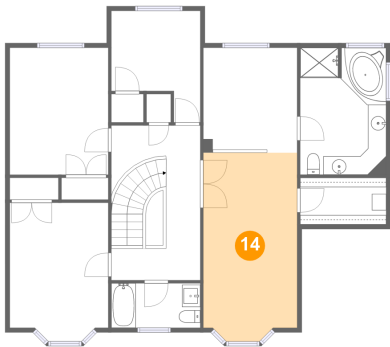
13 Floor 3 - W.I.C.



Max Dimensions: 9'4" x 5'1"  
Calculated Area: 48 sq. ft  
Included: Yes

Heated: Yes  
Finished: Yes  
Enclosed: Yes  
Contiguous: Yes  
Permitted: Yes  
Wet space: No  
Addition: No  
Conversion: No

14 Floor 3 - Primary Bedroom

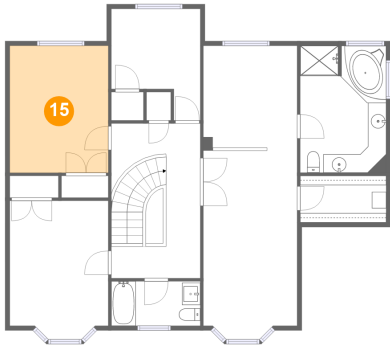


Max Dimensions: 10'3" x 20'7"  
Calculated Area: 203 sq. ft  
Included: Yes

Heated: Yes  
Finished: Yes  
Enclosed: Yes  
Contiguous: Yes  
Permitted: Yes  
Wet space: No  
Addition: No  
Conversion: No

3 Crantham Crescent, Stittsville, Old Stittsville, Stittsville,  
Ontario, Canada, K2S 1R2

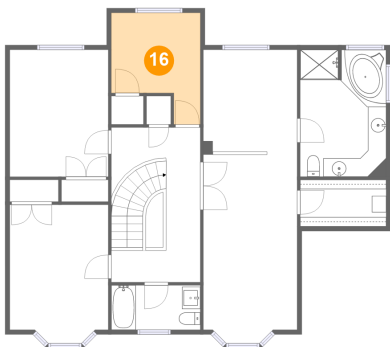
**15** Floor 3 - Bedroom



Max Dimensions: 10'8" x 13'10"  
Calculated Area: 148 sq. ft  
Included: Yes

Heated: Yes  
Finished: Yes  
Enclosed: Yes  
Contiguous: Yes  
Permitted: Yes  
Wet space: No  
Addition: No  
Conversion: No

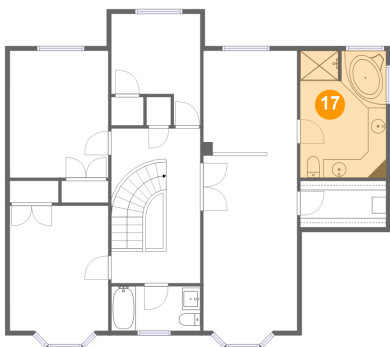
**16** Floor 3 - Bedroom



Max Dimensions: 9'8" x 12'2"  
Calculated Area: 95 sq. ft  
Included: Yes

Heated: Yes  
Finished: Yes  
Enclosed: Yes  
Contiguous: Yes  
Permitted: Yes  
Wet space: No  
Addition: No  
Conversion: No

**17** Floor 3 - Primary Bath

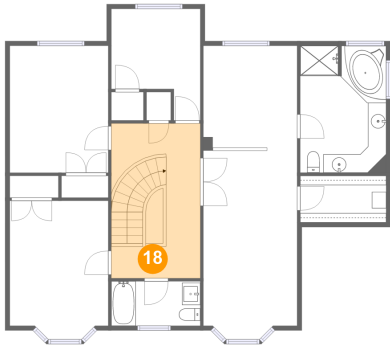


Max Dimensions: 9'4" x 13'10"  
Calculated Area: 128 sq. ft  
Included: Yes

Heated: Yes  
Finished: Yes  
Enclosed: Yes  
Contiguous: Yes  
Permitted: Yes  
Wet space: Yes  
Addition: No  
Conversion: No

3 Crantham Crescent, Stittsville, Old Stittsville, Stittsville,  
Ontario, Canada, K2S 1R2

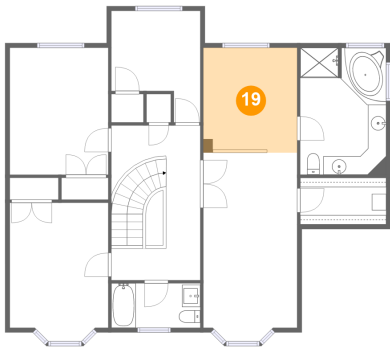
**18** Floor 3 - Hall



Max Dimensions: 9'8" x  
16'10"  
Calculated Area: 163 sq. ft  
Included: Yes

Heated: Yes  
Finished: Yes  
Enclosed: Yes  
Contiguous:  
Yes  
Permitted: Yes  
Wet space: No  
Addition: No  
Conversion: No

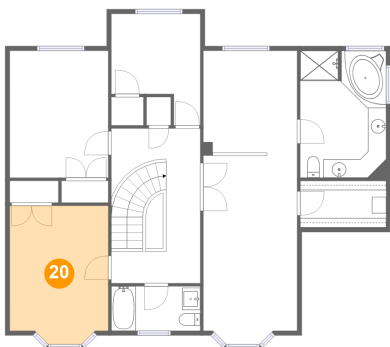
**19** Floor 3 - Sitting Room



Max Dimensions: 10'3" x  
11'5"  
Calculated Area: 117 sq. ft  
Included: Yes

Heated: Yes  
Finished: Yes  
Enclosed: Yes  
Contiguous:  
Yes  
Permitted: Yes  
Wet space: No  
Addition: No  
Conversion: No

**20** Floor 3 - Bedroom

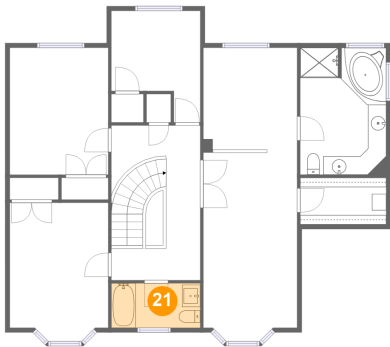


Max Dimensions: 10'9" x  
15'1"  
Calculated Area: 154 sq. ft  
Included: Yes

Heated: Yes  
Finished: Yes  
Enclosed: Yes  
Contiguous:  
Yes  
Permitted: Yes  
Wet space: No  
Addition: No  
Conversion: No

3 Crantham Crescent, Stittsville, Old Stittsville, Stittsville,  
Ontario, Canada, K2S 1R2

**21** Floor 3 - Bath



Max Dimensions: 9'8" x 4'10"  
Calculated Area: 47 sq. ft  
Included: Yes

Heated: Yes  
Finished: Yes  
Enclosed: Yes  
Contiguous: Yes  
Permitted: Yes  
Wet space: Yes  
Addition: No  
Conversion: No