


**Total Area: 612 sq. ft**

Floor 1: 612 sq. ft

Excluded: Walls: 0 sq. ft

**Property summary**

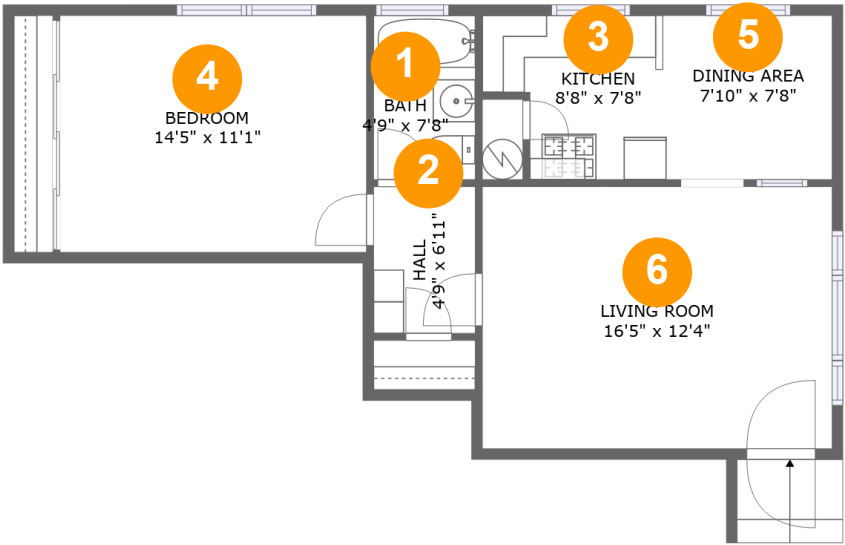
 **1** Floors

 **1** Bedrooms

 **1** Bathrooms

Home report

1406 Spaulding Ave #4, Los Angeles, CA, US

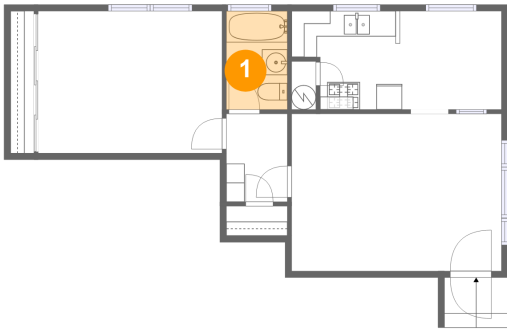


Room dimensions

Floor 1 Total:612sqft   Excluded: 0sqft

#		Max Dimensions	sqft	Included
1	Bath	4'9" x 7'8"	37 sq. ft	Yes
2	Hall	4'9" x 6'11"	33 sq. ft	Yes
3	Kitchen	8'8" x 7'8"	57 sq. ft	Yes
4	Bedroom	14'5" x 11'1"	160 sq. ft	Yes
5	Dining Area	7'10" x 7'8"	60 sq. ft	Yes
6	Living Room	16'5" x 12'4"	202 sq. ft	Yes

1 Floor 1 - Bath



Max Dimensions: 4'9" x 7'8"  
Calculated Area: 37 sq. ft  
Included: Yes

Heated: Yes  
Finished: Yes  
Enclosed: Yes  
Contiguous: Yes  
Permitted: Yes  
Wet space: Yes  
Addition: No  
Conversion: No

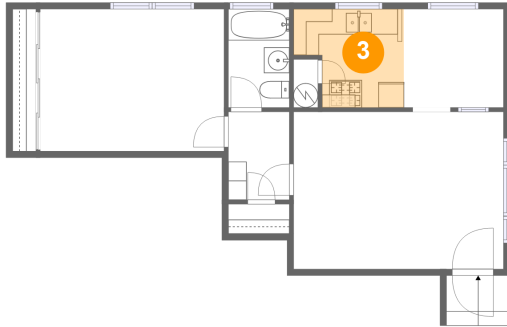
2 Floor 1 - Hall



Max Dimensions: 4'9" x 6'11"  
Calculated Area: 33 sq. ft  
Included: Yes

Heated: Yes  
Finished: Yes  
Enclosed: Yes  
Contiguous: Yes  
Permitted: Yes  
Wet space: No  
Addition: No  
Conversion: No

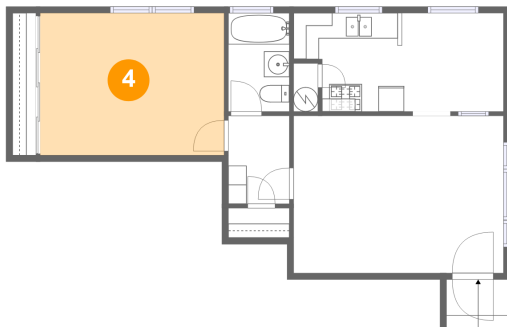
### 3 Floor 1 - Kitchen



Max Dimensions: 8'8" x 7'8"  
Calculated Area: 57 sq. ft  
Included: Yes

Heated: Yes  
Finished: Yes  
Enclosed: Yes  
Contiguous: Yes  
Permitted: Yes  
Wet space: No  
Addition: No  
Conversion: No

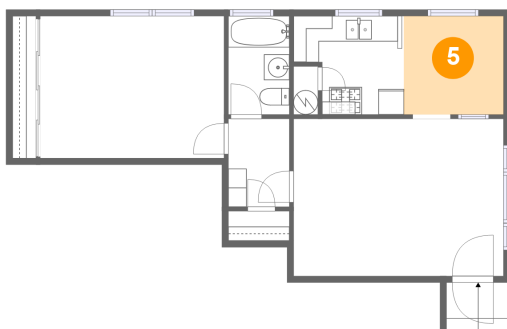
### 4 Floor 1 - Bedroom



Max Dimensions: 14'5" x 11'1"  
Calculated Area: 160 sq. ft  
Included: Yes

Heated: Yes  
Finished: Yes  
Enclosed: Yes  
Contiguous: Yes  
Permitted: Yes  
Wet space: No  
Addition: No  
Conversion: No

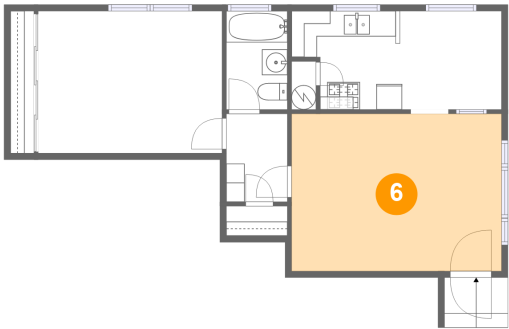
### 5 Floor 1 - Dining Area



Max Dimensions: 7'10" x 7'8"  
Calculated Area: 60 sq. ft  
Included: Yes

Heated: Yes  
Finished: Yes  
Enclosed: Yes  
Contiguous: Yes  
Permitted: Yes  
Wet space: No  
Addition: No  
Conversion: No

6 Floor 1 - Living Room



Max Dimensions: 16'5" x 12'4"  
Calculated Area: 202 sq. ft  
Included: Yes

Heated: Yes  
Finished: Yes  
Enclosed: Yes  
Contiguous: Yes  
Permitted: Yes  
Wet space: No  
Addition: No  
Conversion: No