

**BERKSHIRE
HATHAWAY**
HOMESERVICES

PENFED
REALTY



For Sale

4866 Sir Sagamore Dr,
North Chesterfield, VA
23237





WELCOME TO 4866 SIR SAGAMORE DRIVE IN THE CENTRALLY LOCATED KINGSLAND RESERVE NEIGHBORHOOD OF NORTH CHESTERFIELD

BEDROOMS

3

BATHROOMS

2.5

SQUARE FEET

2,464

YEAR BUILT

2024

MLS # 2513480

LOT SIZE - .30 ACRES



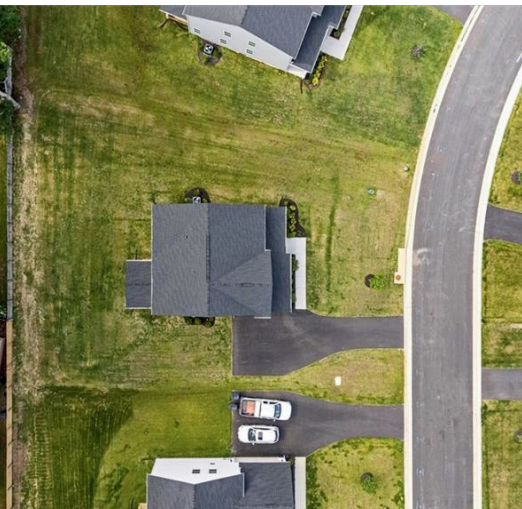
Just Listed in the centrally located Kingsland Reserve neighborhood of North Chesterfield. Welcome to 4866 Sir Sagamore Drive - why wait to build when you can own this like-new 2024 Hudson floorplan by Ryan Homes. Consisting of 3 bedrooms (plus an oversized loft) & 2.5 bathrooms over 2464 sqft of upgraded living space on a quiet cul-de-sac street. Upon entering from the covered front porch, you are greeted with high ceilings, recessed lighting and beautiful luxury vinyl plank flooring throughout the home's first floor.

An open concept living room w/ gas fireplace flows into the beautiful eat-in kitchen w/ quartz counters, a large center island with breakfast bar, gas cooking, stainless steel appliances, pantry, a morning room space for dining & direct walk-out access to the covered back porch. This level of the home is completed with a flexible home office space w/ glass French doors.

Upgraded natural wood floors lead you to the carpeted second floor of the home that features an expansive primary bedroom suite with a walk-in closet & upgraded bathroom with a garden soaking tub & step-in framed shower. The second floor of the home is completed with 2 additional bedrooms, a full 2nd floor laundry room, a hallway bathroom & loft/bonus room w/ closet. The landscaped exterior features front/rear irrigation, paved driveway, 2-car side entry garage & front/rear covered porches.

The sold out Kingsland Reserve section of the Kingsland Park neighborhood is tucked away inside of the community with similar new construction homes of the same age with quiet/safe streets for evening walks. Located close to Chesterfield schools & just 10 minutes to shopping in Chester. Only 20 minutes to downtown Richmond & centrally located to 288, 95 & Chippenham Parkway for easy access to all major roads.





Aaron Gilbert, REALTOR®

Berkshire Hathaway HomeServices PenFed Realty

Mobile: 804-868-0080 | Office: 804-320-1391

aaron.gilbert@penfedrealty.com

aarongilbert.penfedrealty.com

2737 McRae Road, North Chesterfield, VA 23235

